

# PERIMETER

**SURVEYING & MAPPING**  
Certificate of Authorization No. LB7264  
Prepared by: Jeff S. Hodapp, P.S.M.  
951 Broken Sound Parkway, Suite 320  
Boca Raton, Florida 33487  
Tel: (561) 241-9988  
Fax: (561) 241-5182

### LEGEND:

- SET P.R.M. (UNLESS OTHERWISE NOTED) - 4" X 4" CONC. MON. WITH ALUMINUM DISK STAMPED P.R.M. #LB7264
- P.C.P. CENTERLINE

### ABBREVIATIONS:

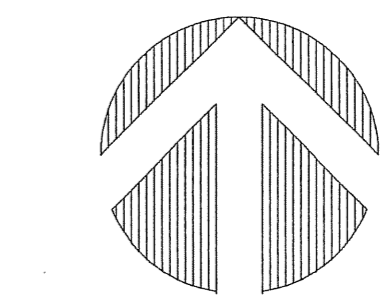
- CH CHORD
- CHB CHORD BEARING
- CONC. CONCRETE
- COR. CORNER
- D DELTA (CENTRAL ANGLE)
- D.E. DRAINAGE EASEMENT
- L. ARCLength
- L.B. LICENSED BUSINESS
- L.E. LANDSCAPE EASEMENT
- L.M.E. LAKE MAINTENANCE EASEMENT
- L.M.A.E. LAKE MAINTENANCE ACCESS EASEMENT
- L.S. LICENSED SURVEYOR
- L.W.D.D. LAKE WORTH DRAINAGE DISTRICT
- MON. MONUMENT
- O.R.B. OFFICIAL RECORDS BOOK
- N.R. NON-RADIAL
- P.B. PLAT BOOK
- P.B.C.R. PALM BEACH COUNTY RECORDS
- P.C. PAGE
- P.C.P. PERMANENT CONTROL POINT
- P.O.B. POINT OF BEGINNING
- P.O.C. POINT OF COMMENCEMENT
- P.R.M. PERMANENT REFERENCE MONUMENT
- P.S.M. PROFESSIONAL SURVEYOR & MAPPER
- P.U.D. PLANNED UNIT DEVELOPMENT
- R. RADIUS
- R.E.E. ROOF ENCROACHMENT EASEMENT
- R/W. RIGHT-OF-WAY
- SEC. SECTION
- S.F. SQUARE FEET
- U.E. UTILITY EASEMENT

# TIVOLI ISLES P.U.D.

441 - ATLANTIC P.U.D. (CONTROL NO. 04-206)

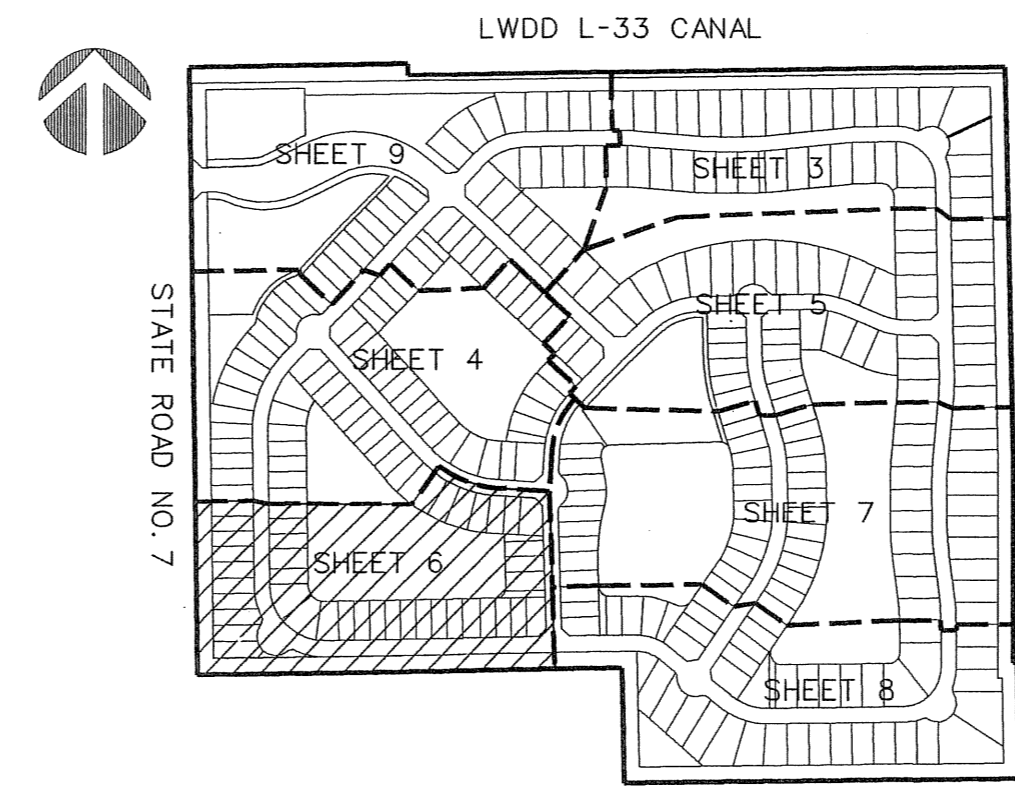
A REPLAT OF ALL OF TRACTS 79-87, 106-112, AND A PORTION OF TRACTS 73-78, 88, 105, AND 117-120, TOGETHER WITH A PORTION OF THE PLATTED ACREAGE WEST OF SAID TRACTS 80, 81 AND 112, ALL IN SECTION 18, TOWNSHIP 46 SOUTH, RANGE 42 EAST, OF "PALM BEACH FARMS COMPANY PLAT NO. 1" (P.B. 2, PGS. 26-28, P.B.C.R.), PALM BEACH COUNTY, FLORIDA. DECEMBER, 2005

97



GRAPHIC SCALE  
1"=50'

SHEET 6 OF 9



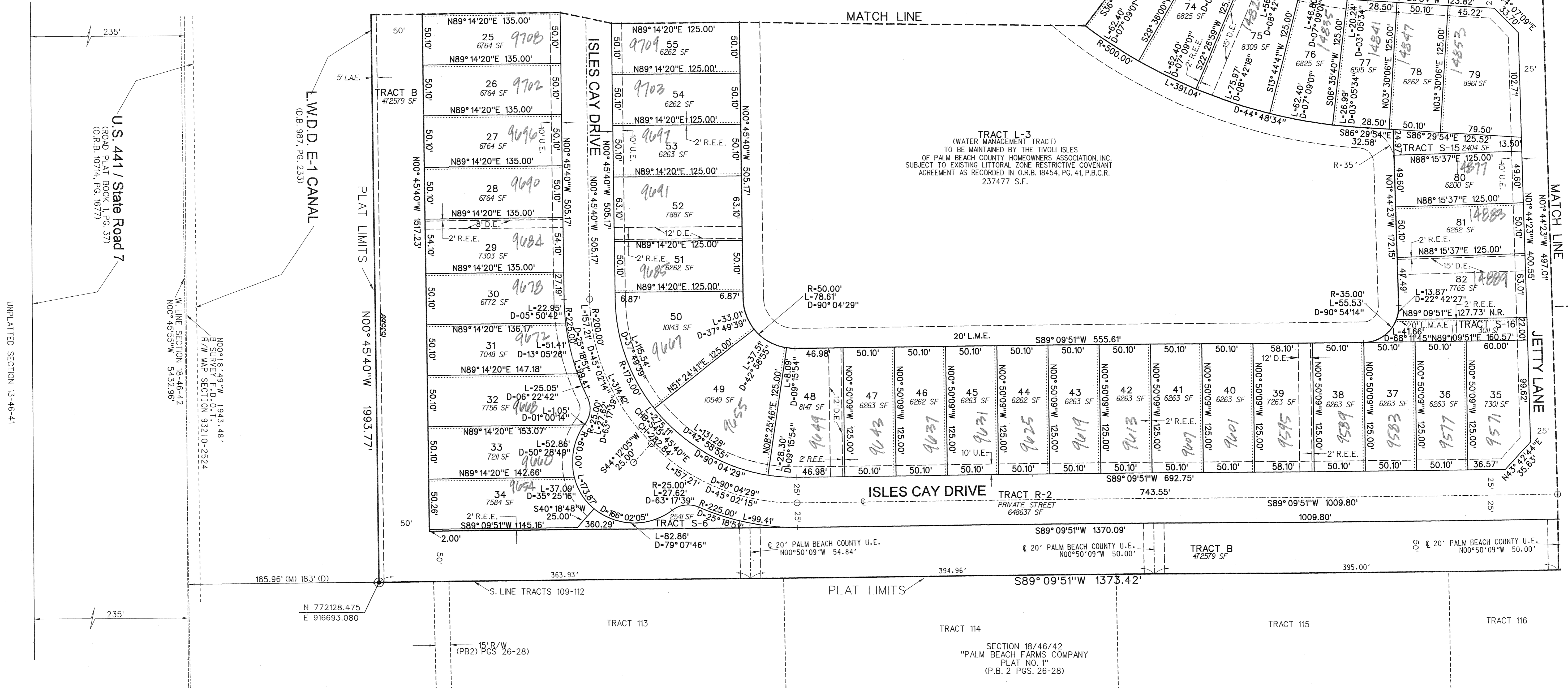
KEY MAP  
NOT TO SCALE

SEE SHEET 4

MATCH LINE

SEE SHEET 7

SEE SHEET 8



TIVOLI ISLES  
PAGE 97  
FLOOD MAP # 2004  
ZONING PD  
SEAL # 5  
TAZ 17B  
PUD NAME

UNPLATTED SECTION 13-46-41

U.S. 441 / State Road 7  
(ROAD PLAT BOOK 1, PG. 37)  
(O.R.B. 10714, PG. 1677)

L.W.D.D. E-1 CANAL  
(O.B. 987, PG. 233)

W. LINE SECTION 18-46-42  
NOO° 45'55"W 5432.96'

N. LINE SECTION 18-46-42  
NOO° 45'55"W 5432.96'

N. SURVEY F.D. 0-1  
R/W MAP SECTION 93210-2524

N. SURVEY F.D. 1943-48

N 772128.475  
E 916693.080

S. LINE TRACTS 109-112

15' R/W  
(PB2) PGS 26-28

TRACT 113

TRACT 114

TRACT 115

TRACT 116

TRACT L-3  
(WATER MANAGEMENT TRACT)  
TO BE MAINTAINED BY THE TIVOLI ISLES  
OF PALM BEACH COUNTY HOMEOWNERS ASSOCIATION, INC.  
SUBJECT TO EXISTING LITTORAL ZONE RESTRICTIVE COVENANT  
AGREEMENT AS RECORDED IN O.R.B. 18454, PG. 41, P.B.C.R.  
237477 S.F.

TRACT R-2  
PRIVATE STREET  
64863 SF

TRACT B  
472579 SF

SECTION 18/46/42  
"PALM BEACH FARMS COMPANY"  
PLAT NO. "1"  
(P.B. 2 PGS. 26-28)