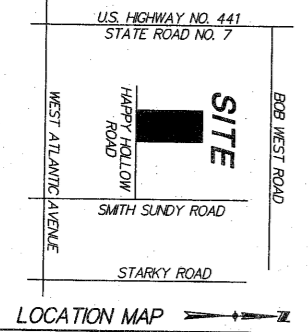
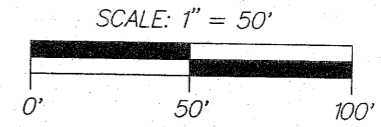


EAGLE PLANTS PRESERVE AREA PARCEL 3

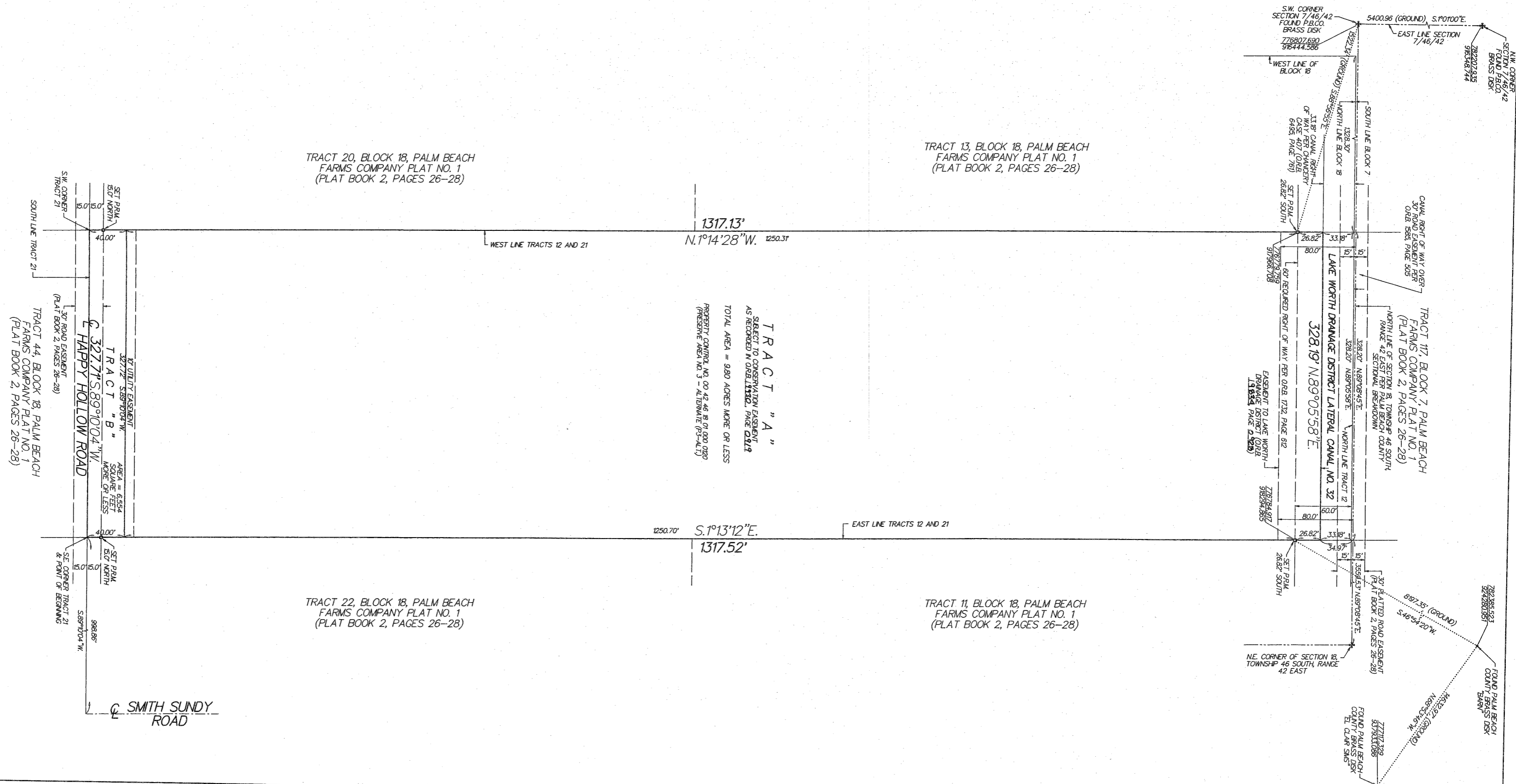
PETITION NO. PDD 2004-206 (441 - ATLANTIC P.U.D.)
 BEING A PORTION OF TRACTS 12 AND 21, PALM BEACH FARMS
 COMPANY PLAT NO. 1 (PLAT BOOK 2, PAGES 26, 27 & 28),
 BEING IN SECTION 18, TOWNSHIP 46 SOUTH, RANGE 42 EAST,
 PALM BEACH COUNTY, FLORIDA.

SHEET 3 OF 3
 MARCH, 2005

THIS INSTRUMENT WAS PREPARED BY PAUL D. ENGLE IN THE OFFICE OF O'BRIEN,
 SUITER & O'BRIEN, INC., 2601 NORTH FEDERAL HIGHWAY, DELRAY BEACH, FLORIDA
 33483 (561-276-4501).



0925-001



TRACT 20, BLOCK 18, PALM BEACH
 FARMS COMPANY PLAT NO. 1
 (PLAT BOOK 2, PAGES 26-28)

TRACT 13, BLOCK 18, PALM BEACH
 FARMS COMPANY PLAT NO. 1
 (PLAT BOOK 2, PAGES 26-28)

TRACT "A"
 SUBJECT TO CONSERVATION EASEMENT
 AS RECORDED IN ORB 111102, PAGE 0212
 TOTAL AREA = 980 ACRES MORE OR LESS
 PROPERTY CONTROL NO. 00 42 46 18 01 000 020
 (PRESERVE AREA NO. 3 - ALTERNATE (P3-ALT))

TRACT 22, BLOCK 18, PALM BEACH
 FARMS COMPANY PLAT NO. 1
 (PLAT BOOK 2, PAGES 26-28)

TRACT 11, BLOCK 18, PALM BEACH
 FARMS COMPANY PLAT NO. 1
 (PLAT BOOK 2, PAGES 26-28)

327.72' S89°10'04"W
 AREA = 6584
 SQUARE FEET
 MORE OR LESS
 C 327.71'S.89°10'04"W
 HAPPY HOLLOW ROAD

SUBMISSION Eagle Plants Area 3
 PAGE 91
 FILED DATE 2005
 COUNTY PALM BEACH
 DATE 3/15/05
 TIME 1:50
 PDD NAME

91