

PERIMETER

SURVEYING & MAPPING
Certificate of Authorization No. LB7264
Prepared by: Jeff S. Hodapp, P.S.M.
951 Broken Sound Parkway, Suite 320
Boca Raton, Florida 33487
Tel: (561) 241-9988
Fax: (561) 241-5182

LONG, DEKA & MONTI PLAT - PRESERVE AREA 6

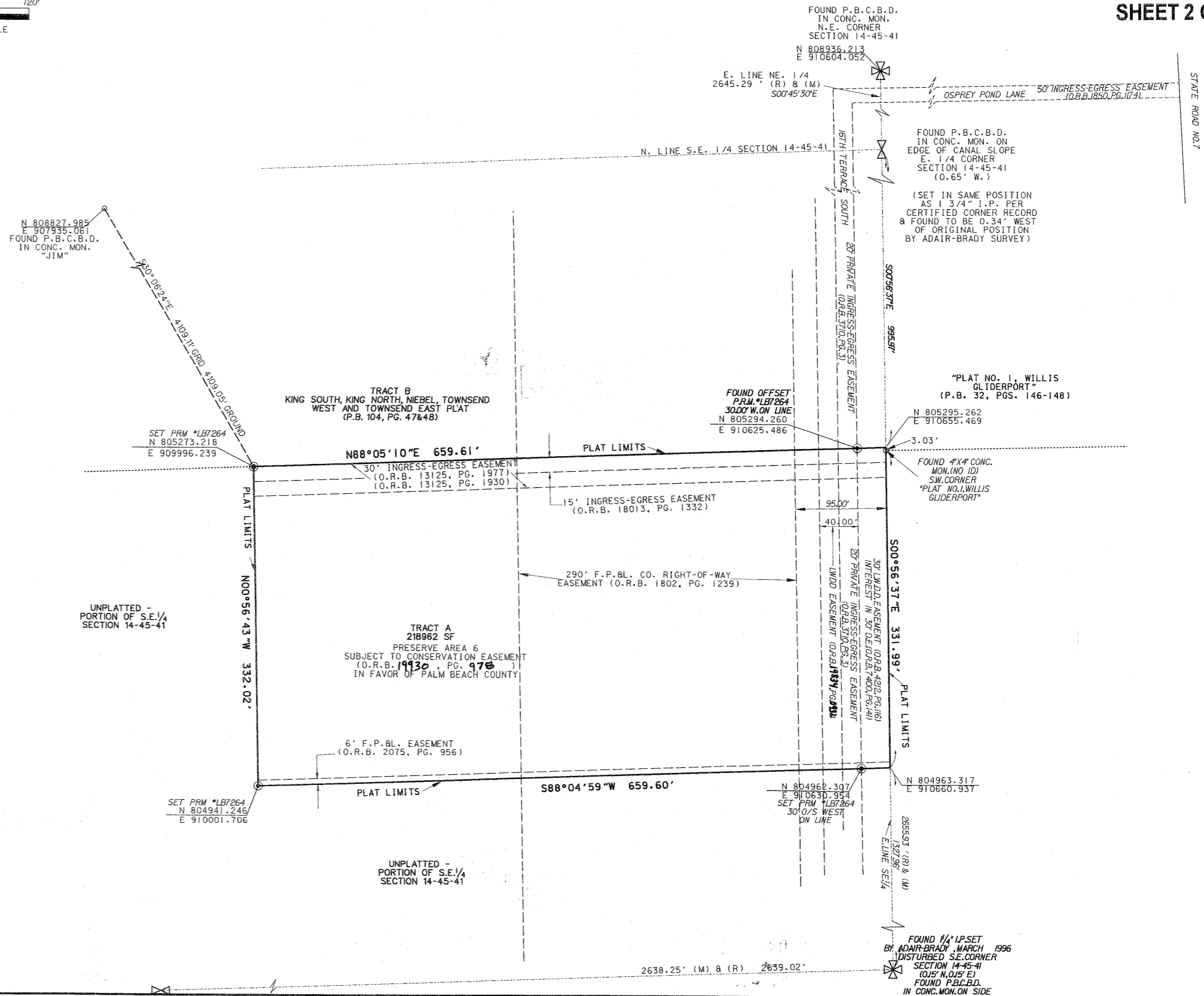
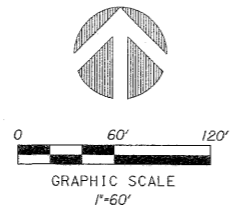
PETITION NO. PDD 2004-206 (ASCOT - 441 ATLANTIC P.U.D.)
A PORTION OF THE SOUTHEAST ONE-QUARTER OF SECTION 14, TOWNSHIP 45
SOUTH, RANGE 41 EAST, PALM BEACH COUNTY, FLORIDA.
DECEMBER, 2005

ABBREVIATIONS:

CONC.	CONCRETE
COR.	CORNER
D	DELTA (CENTRAL ANGLE)
D.E.	DRAINAGE EASEMENT
F.P.&L. CO.	FLORIDA POWER AND LIGHT COMPANY
I.P.	IRON PIPE
I.R.C.	IRON ROD AND CAP
L	LENGTH
L.B.	LICENSED BUSINESS
L.E.	LANDSCAPE EASEMENT
L.S.	LICENSED SURVEYOR
L.W.D.D.	LAKE WORTH DRAINAGE DISTRICT
MON.	MONUMENT
O.R.B.	OFFICIAL RECORDS BOOK
N.R.	NON-RADIAL
P.B.	PLAT BOOK
P.B.C.B.D.	PALM BEACH COUNTY BRASS DISK
P.B.C.R.	PALM BEACH COUNTY RECORDS
PG.	PAGE
P.C.P.	PERMANENT CONTROL POINT
P.O.B.	POINT OF BEGINNING
P.O.C.	POINT OF COMMENCEMENT
P.R.M.	PERMANENT REFERENCE MONUMENT
P.S.M.	PROFESSIONAL SURVEYOR & MAPPER
P.U.D.	PLANNED UNIT DEVELOPMENT
R	RADIUS
R/W	RIGHT-OF-WAY
SEC.	SECTION
S.F.	SQUARE FEET
U.E.	UTILITY EASEMENT
(M)	MEASURED
(R)	RECORD

LEGEND:

⊙	SET P.R.M. (UNLESS OTHERWISE NOTED)-4" X4" CONC. MON. WITH ALUMINUM DISK STAMPED P.R.M.#LB7264
⊙	P.C.P.
⊙	CENTERLINE



APPROVED FOR RECORD
 BY: _____
 DATE: _____
 TITLE: _____
 APPROVED FOR RECORD
 BY: _____
 DATE: _____
 TITLE: _____

FOUND 1/4" I.P. SET
 BY ADAIR-BRADY MARCH 1996
 DISTURBED S.E. CORNER
 SECTION 14-45-41
 (O.S. N.05°E)
 FOUND P.B.C.B.D.
 IN CONC. MON. ON SIDE