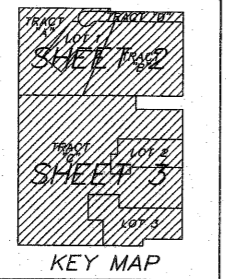
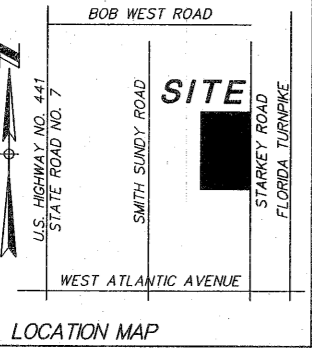
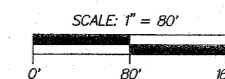


WINDSPIRIT PRESERVE

"PETITION NO. PPD 2004-206 (441 - ATLANTIC P.U.D.)

BEING A PORTION OF BLOCK 17, PALM BEACH FARMS COMPANY
PLAT NO. 1 (PLAT BOOK 2, PAGES 26, 27 & 28) BEING IN
SECTION 17, TOWNSHIP 46 SOUTH, RANGE 42 EAST, PALM BEACH
COUNTY, FLORIDA.

SHEET 3 OF 3 MARCH 2005



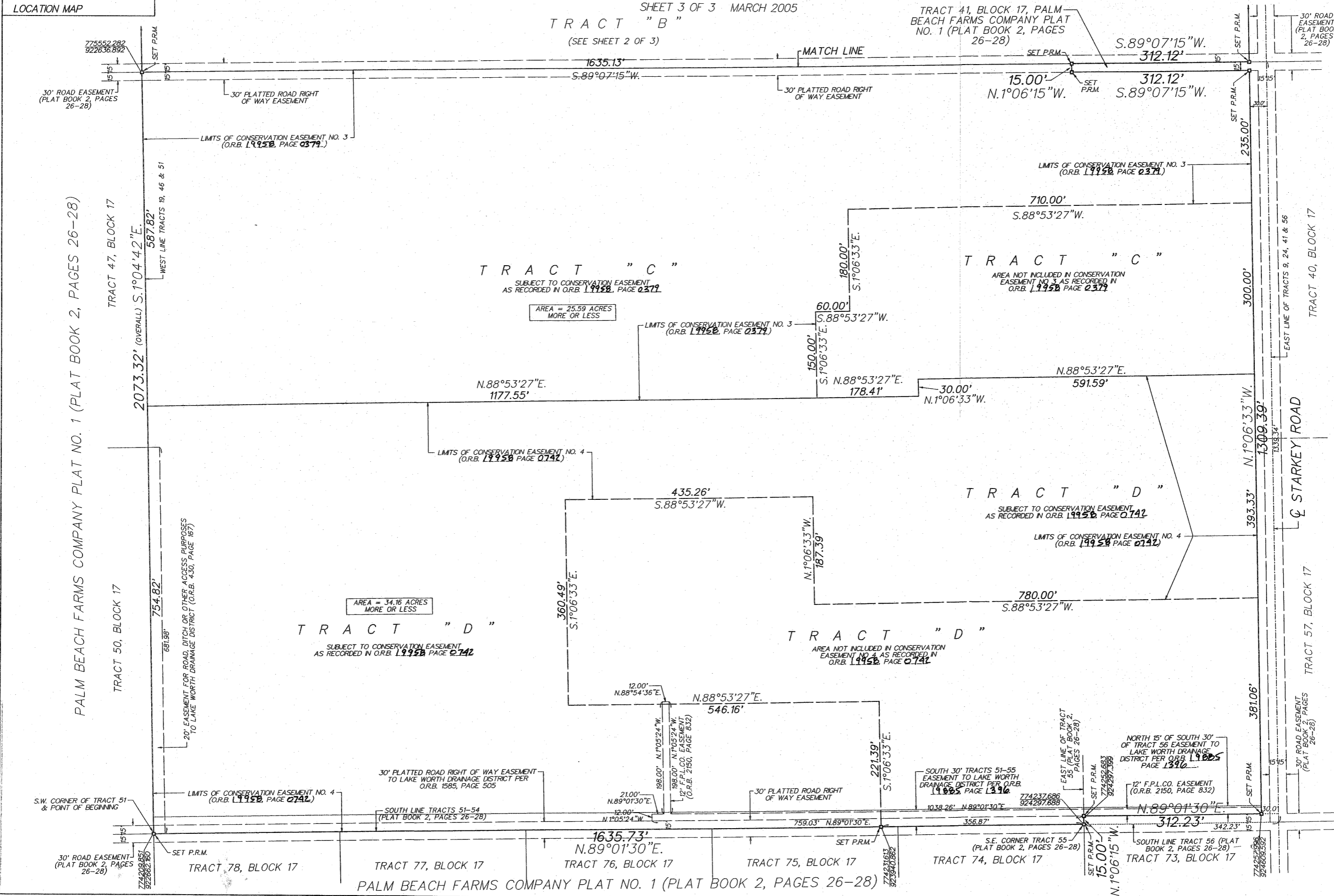
0925-003

SUBDIVISION
BLOCK
PAGE
FLORIDA MAP #
SECTION
TOWNSHIP
RANGE
ZIP CODE
COUNTY
STATE
F.P.L. CO.
F.P.D. NAME

PALM BEACH FARMS COMPANY PLAT NO. 1 (PLAT BOOK 2, PAGES 26-28)

PALM BEACH FARMS COMPANY PLAT NO. 1
(PLAT BOOK 2, PAGES 26-28)

LEGEND:
P.R.M. = PERMANENT REFERENCE
MONUMENT (4"x4" CONCRETE MONUMENT
WITH BRASS CAP)
O.R.B. = OFFICIAL RECORD BOOK
F.P.L.CO. = FLORIDA POWER & LIGHT
COMPANY



775552.282
922636.892
30' ROAD EASEMENT
(PLAT BOOK 2, PAGES
26-28)

LIMITS OF CONSERVATION EASEMENT NO. 3
(O.R.B. 19958, PAGE 0379)

TRACT "C"
SUBJECT TO CONSERVATION EASEMENT
AS RECORDED IN O.R.B. 19958, PAGE 0379

AREA = 25.59 ACRES
MORE OR LESS

LIMITS OF CONSERVATION EASEMENT NO. 3
(O.R.B. 19958, PAGE 0379)

TRACT "C"
AREA NOT INCLUDED IN CONSERVATION
EASEMENT NO. 3 AS RECORDED IN
O.R.B. 19958, PAGE 0379

TRACT "D"
SUBJECT TO CONSERVATION EASEMENT
AS RECORDED IN O.R.B. 19958, PAGE 0742

LIMITS OF CONSERVATION EASEMENT NO. 4
(O.R.B. 19958, PAGE 0742)

TRACT "D"
SUBJECT TO CONSERVATION EASEMENT
AS RECORDED IN O.R.B. 19958, PAGE 0742

LIMITS OF CONSERVATION EASEMENT NO. 4
(O.R.B. 19958, PAGE 0742)

TRACT "D"
AREA NOT INCLUDED IN CONSERVATION
EASEMENT NO. 4 AS RECORDED IN
O.R.B. 19958, PAGE 0742

90' EASEMENT FOR ROAD, DITCH OR OTHER ACCESS PURPOSES
TO LAKE WORTH DRAINAGE DISTRICT (O.R.B. 430, PAGE 187)

LIMITS OF CONSERVATION EASEMENT NO. 4
(O.R.B. 19958, PAGE 0742)

30' PLATTED ROAD RIGHT OF WAY EASEMENT
TO LAKE WORTH DRAINAGE DISTRICT PER
O.R.B. 1585, PAGE 505

SOUTH LINE TRACTS 51-54
(PLAT BOOK 2, PAGES 26-28)

SOUTH 30' TRACTS 51-55
EASEMENT TO LAKE WORTH
DRAINAGE DISTRICT PER O.R.B.
1985, PAGE 1316

NORTH 15' OF SOUTH 30'
OF TRACT 56 EASEMENT TO
LAKE WORTH DRAINAGE
DISTRICT PER O.R.B. 1985
PAGE 1316

12' F.P.L.CO. EASEMENT
(O.R.B. 2150, PAGE 832)

S.E. CORNER TRACT 55
(PLAT BOOK 2, PAGES 26-28)

SOUTH LINE TRACT 56 (PLAT
BOOK 2, PAGES 26-28)

TRACT 78, BLOCK 17
TRACT 77, BLOCK 17
TRACT 76, BLOCK 17
TRACT 75, BLOCK 17
TRACT 74, BLOCK 17
TRACT 73, BLOCK 17
PALM BEACH FARMS COMPANY PLAT NO. 1 (PLAT BOOK 2, PAGES 26-28)