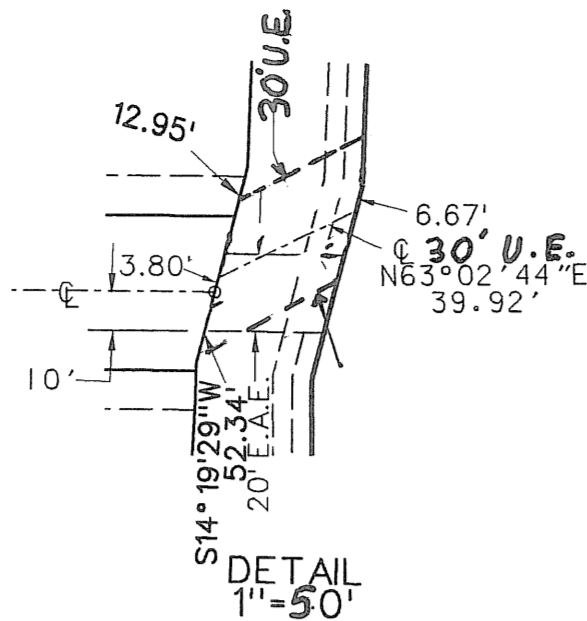


PERIMETER

SURVEYING & MAPPING

Prepared by: Jeff S. Hodapp, P.S.M.
Certificate of Authorization No. LB7264
951 Broken Sound Parkway, Suite 320
Boca Raton, Florida 33487
Tel: (561) 241-9988
Fax: (561) 241-5182



KNOLLWOOD P.U.D.

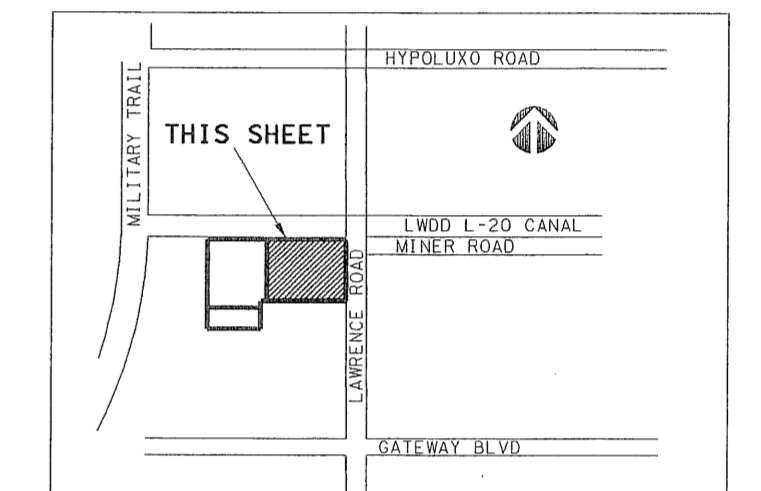
A PORTION OF THE NORTHEAST ONE-QUARTER OF SECTION 13, TOWNSHIP 45 SOUTH,
RANGE 42 EAST, CITY OF BOYNTON BEACH, PALM BEACH COUNTY, FLORIDA.
JANUARY 2006

0056

SHEET 2 OF 4



N.E. CORNER SECTION 13 TOWNSHIP 45 SOUTH RANGE 42 EAST (NOT FOUND)
E. 1/4 CORNER SECTION 12-45-42 FOUND 16D NAIL



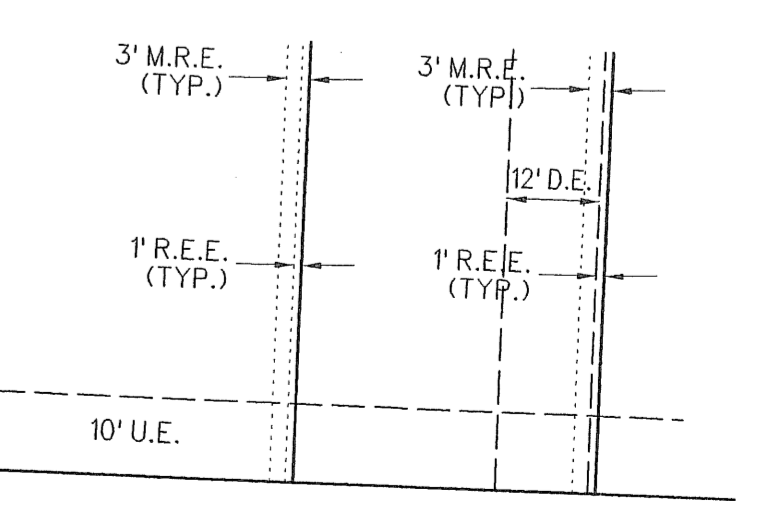
KEY MAP NOT TO SCALE

ABBREVIATIONS:

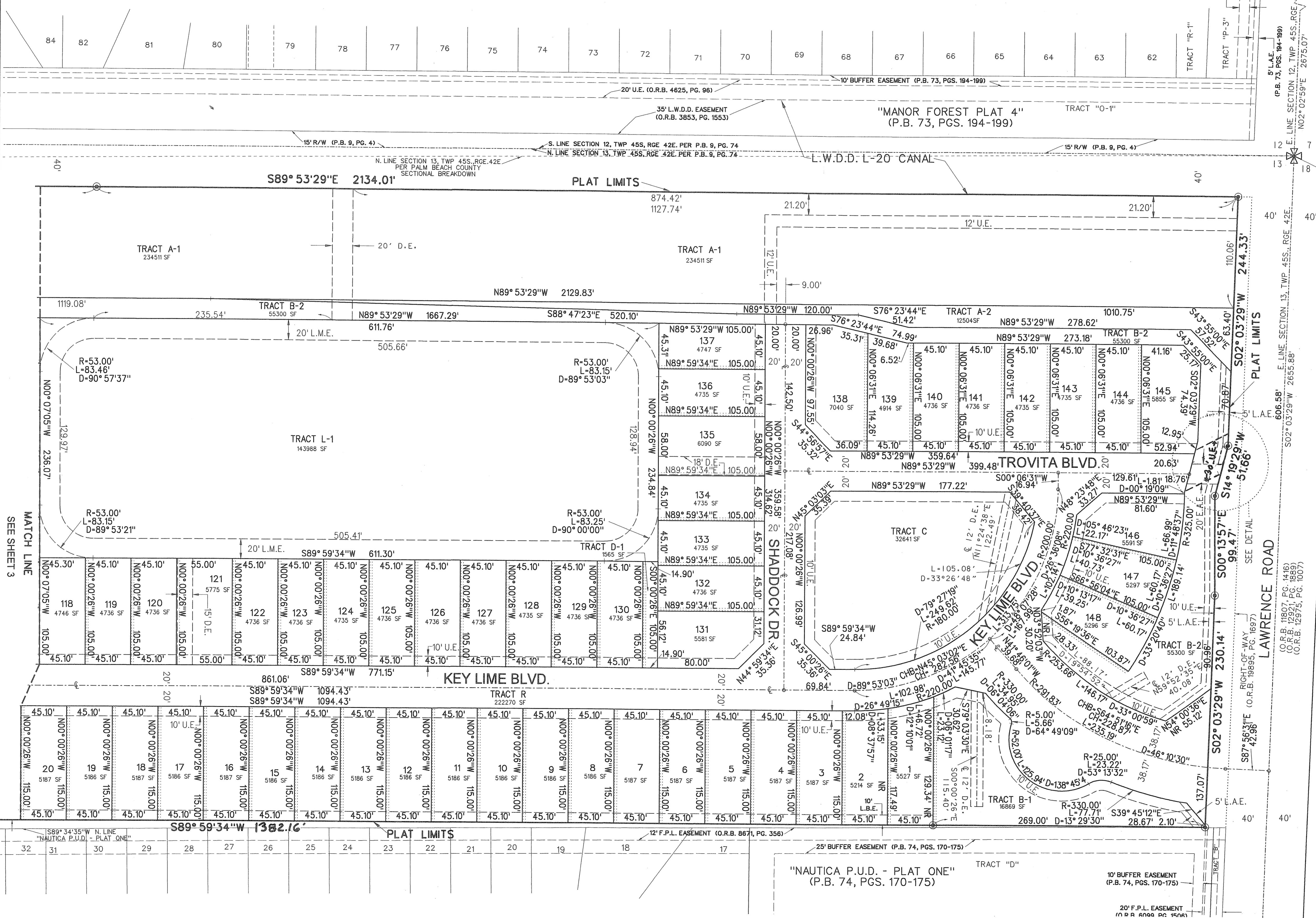
- AC. ACRES
- CH. CHORD
- CHB. CHORD BEARING
- CONC. CONCRETE
- COR. CORNER
- DELTA (CENTRAL ANGLE)
- D.E. DRAINAGE EASEMENT
- E.A.E. EMERGENCY ACCESS EASEMENT
- IRON ROD IRON ROD AND CAP
- L.R.C. ARC LENGTH
- L.B. LICENSED BUSINESS
- L.B.E. LANDSCAPE BUFFER EASEMENT
- L.M.E. LAKE MAINTENANCE EASEMENT
- L.M.A.E. LAKE MAINTENANCE ACCESS EASEMENT
- L.S. LICENSED SURVEYOR
- L.W.D. LAKE WORTH DRAINAGE DISTRICT
- MON. MONUMENT
- M.R.E. MAINTENANCE AND REPAIR EASEMENT
- O.R.B. OFFICIAL RECORDS BOOK
- NON-RADIAL NON-RADIAL
- P.B. PLAT BOOK
- P.B.C.R. PALM BEACH COUNTY RECORDS
- P.P. PAGE
- P.C.P. POINT OF BEGINNING
- P.O.C. POINT OF COMMENCEMENT
- P.R.M. PERMANENT REFERENCE MONUMENT
- P.S.M. PROFESSIONAL SURVEYOR & MAPPER
- P.U.D. PLANNED UNIT DEVELOPMENT
- R. RADIUS
- R.E.E. ROOF ENCROACHMENT EASEMENT
- R.W. RIGHT-OF-WAY
- SEC. SECTION
- S.F. SQUARE FEET
- U.E. UTILITY EASEMENT
- L.A.E. LIMITED ACCESS EASEMENT

LEGEND:

- ⊙ SET P.R.M. (UNLESS OTHERWISE NOTED) ALUMINUM DISK STAMPED 1/8" X 1/4" IN 4" X 4" CONC. MON.
- P.C.P.
- CENTERLINE



TYPICAL LOT LINE DETAIL NOT TO SCALE



MATCH LINE SEE SHEET 3

SEE DETAIL

RIGHT-OF-WAY (O.R.B. 19895, PG. 1697)

(O.R.B. 11807, PG. 1416)

(O.R.B. 12821, PG. 1889)

(O.R.B. 12875, PG. 1007)

(O.R.B. 6000, PG. 1000)