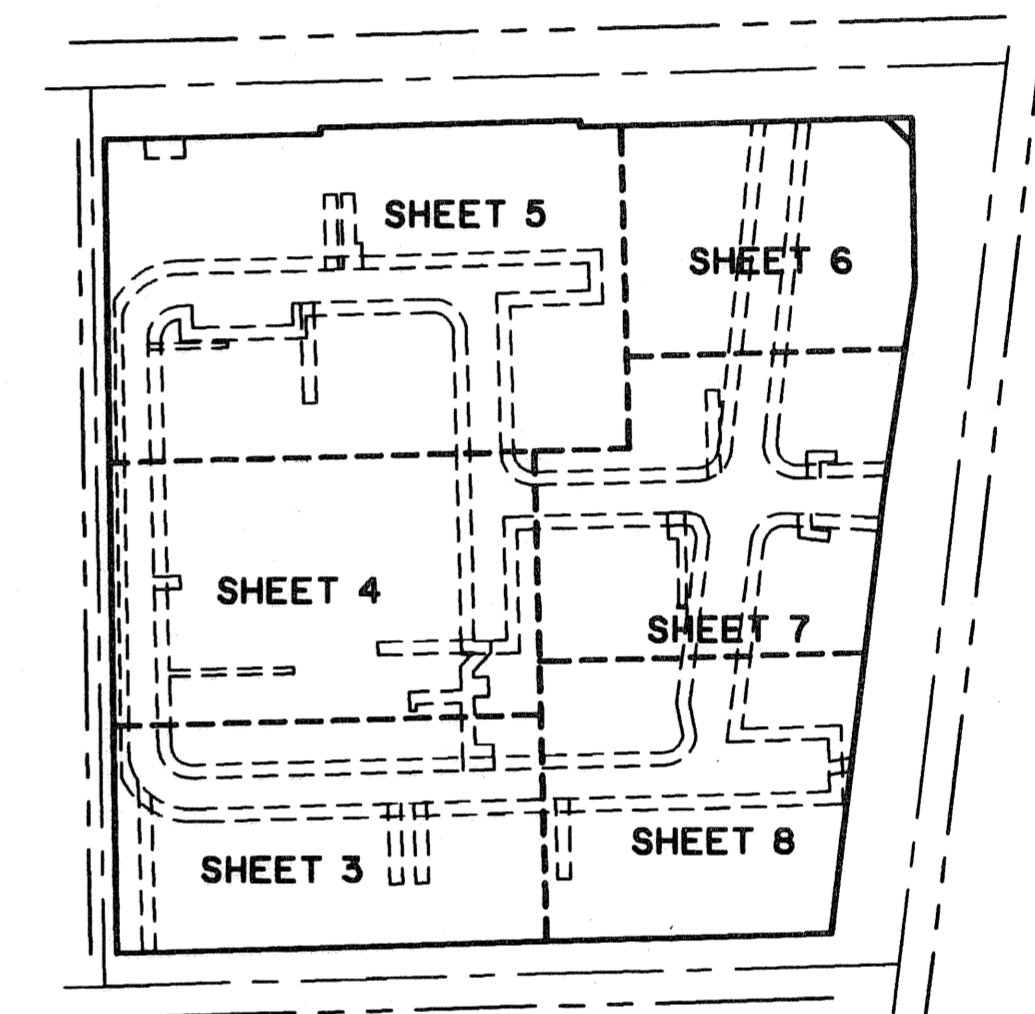
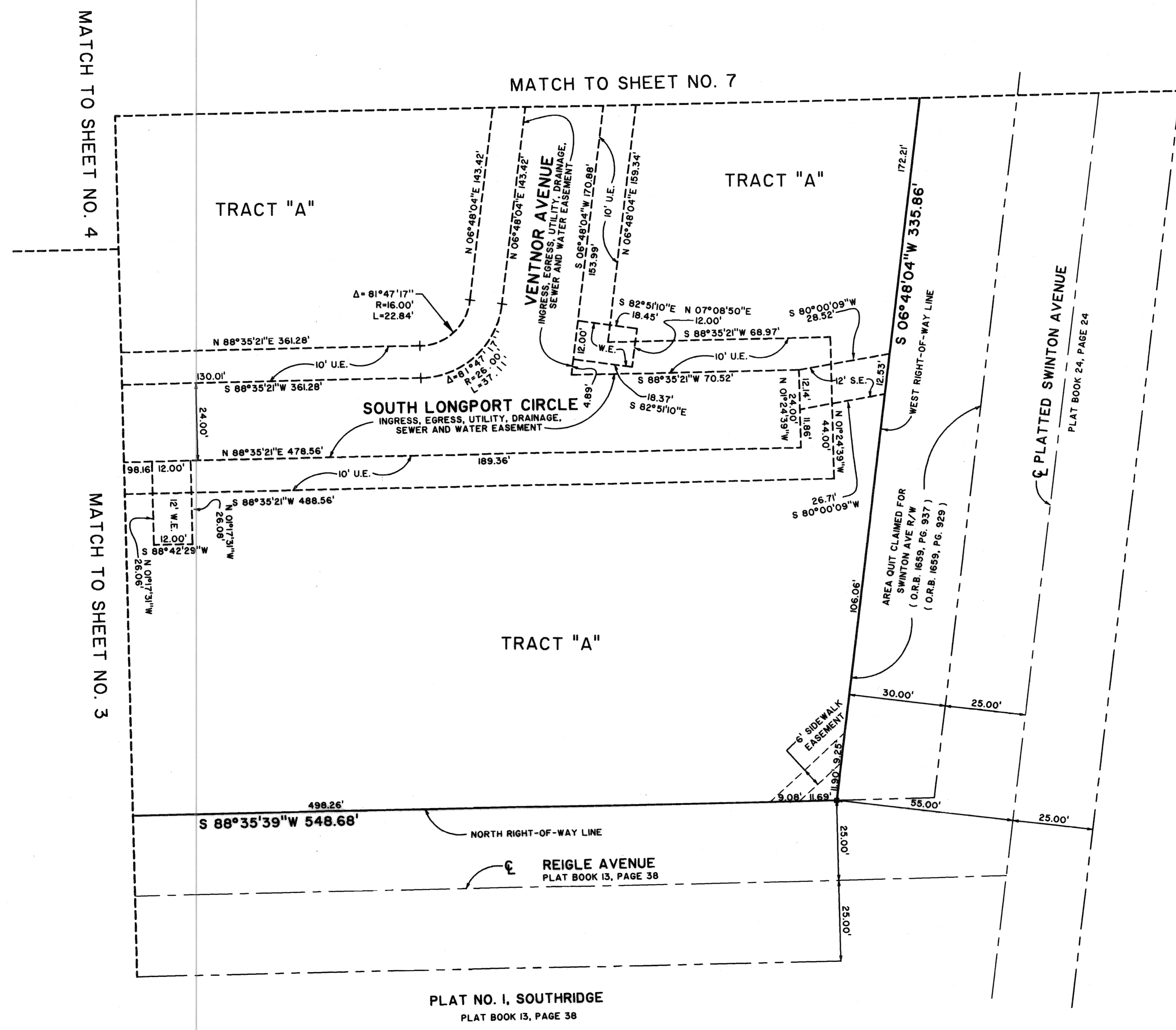


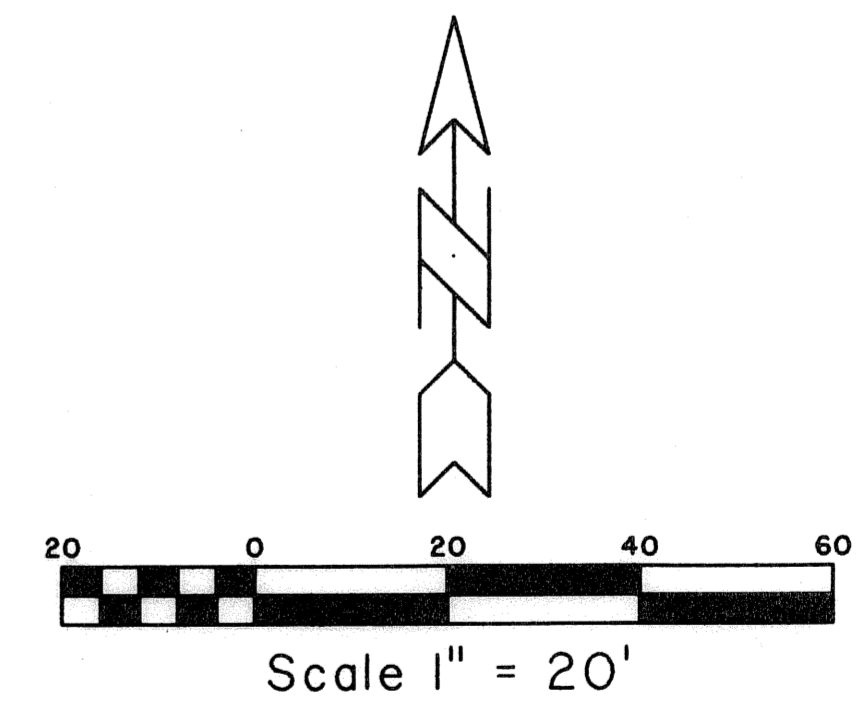
# VILLAGE AT SWINTON SQUARE

BEING A REPLAT OF A PORTION OF LOT 13, SECTION 20, TOWNSHIP 46 SOUTH, RANGE 43 EAST,  
 AS RECORDED IN PLAT BOOK 1, PAGE 4, PUBLIC RECORDS OF PALM BEACH COUNTY, FLORIDA  
 AND A REPLAT OF A PORTION OF PLAT NO. 3 OF SOUTHRIDGE, AS RECORDED IN PLAT  
 BOOK 24, PAGE 24, PUBLIC RECORDS OF PALM BEACH COUNTY, FLORIDA.  
 AND A REPLAT OF A PORTION OF SOUTHERN PINES, AS RECORDED IN PLAT  
 BOOK 4, PAGE 60, PUBLIC RECORDS OF PALM BEACH COUNTY, FLORIDA.  
 LYING IN SECTION 20, TOWNSHIP 46 SOUTH, RANGE 43 EAST, CITY OF DELRAY BEACH  
 SHEET 8 OF 8

STATE OF FLORIDA SS  
 COUNTY OF PALM BEACH  
 THIS PLAT WAS FILED FOR RECORD AT \_\_\_\_\_  
 \_\_\_ M. THIS \_\_\_ DAY OF \_\_\_\_\_ 2006  
 AND DULY RECORDED IN PLAT BOOK NO. \_\_\_\_\_  
 ON PAGE \_\_\_\_\_  
 SHARON R. BOCK, CLERK & COMPTROLLER  
 BY \_\_\_\_\_ D.C.



KEY MAP NOT TO SCALE



MATCH TO SHEET NO. 4

MATCH TO SHEET NO. 3

MATCH TO SHEET NO. 7

PLAT NO. 1, SOUTHRIDGE  
PLAT BOOK 13, PAGE 38

**Landmark Surveying & Mapping Inc.**  
 1850 Forest Hill Boulevard  
 Ph. (561) 433-5405 Suite 100 W.P.B. Florida  
 LB # 4396

**VILLAGE AT SWINTON SQUARE**