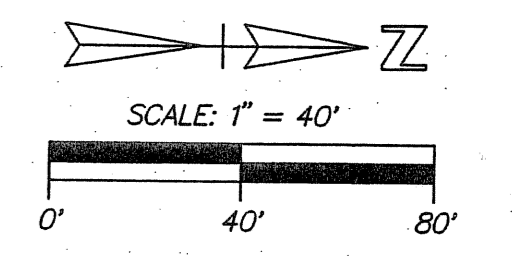
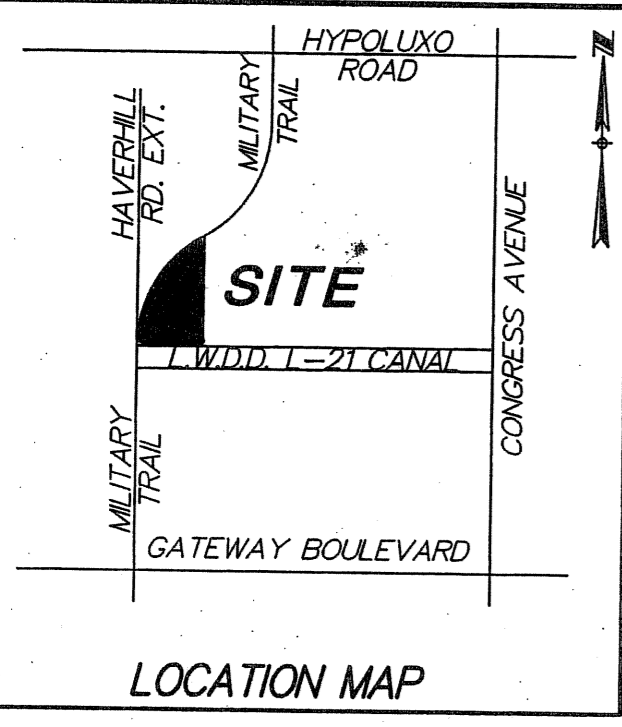


# SOUTH WIND HEIGHTS CONGREGATE LIVING FACILITY, P.U.D.

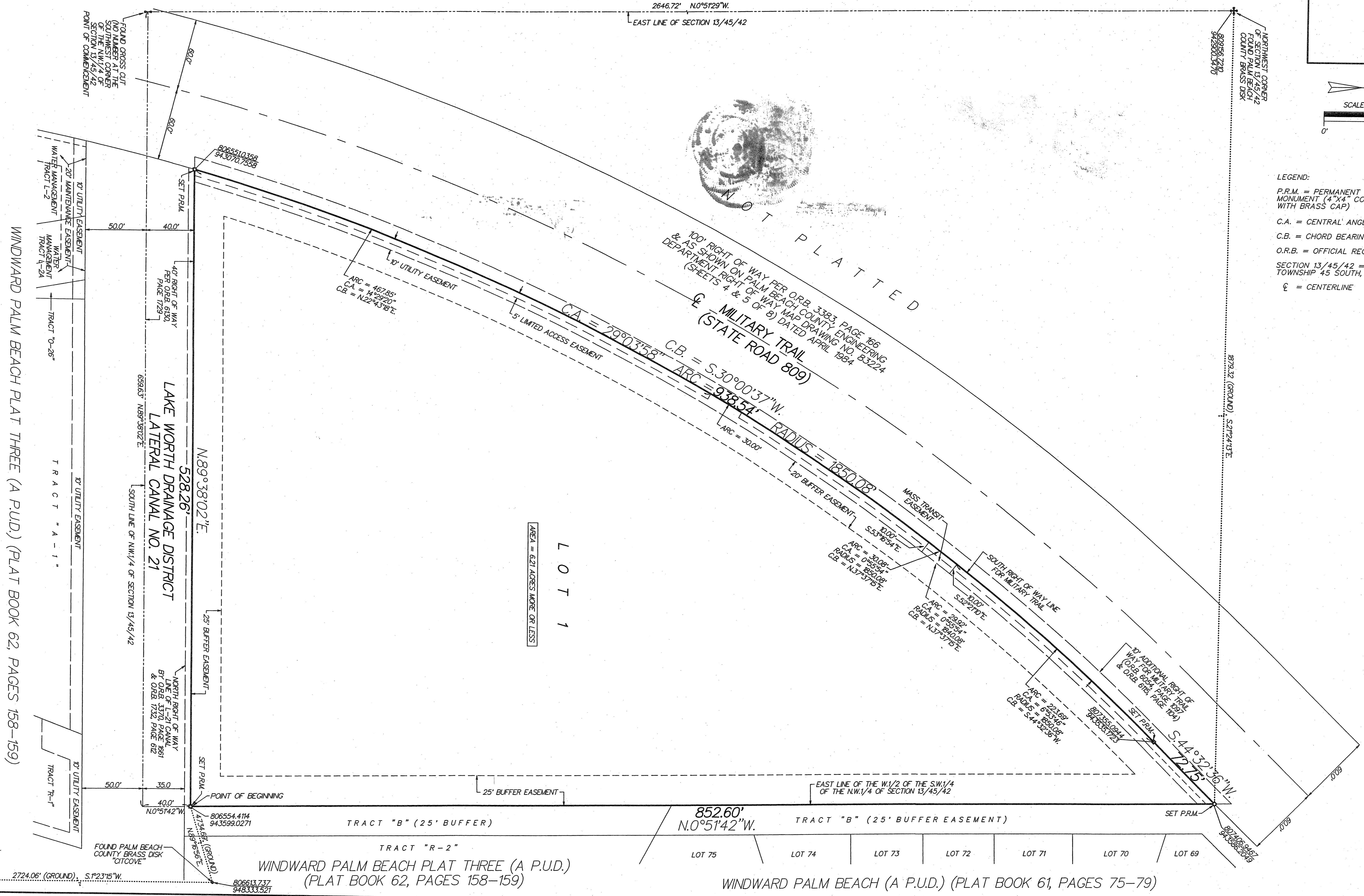
BEING A PORTION OF THE SOUTHWEST QUARTER (S.W.1/4) OF THE NORTHWEST QUARTER (N.W.1/4) OF SECTION 13, TOWNSHIP 45 SOUTH, RANGE 42 EAST, PALM BEACH COUNTY, FLORIDA

SHEET 2 OF 2

THIS INSTRUMENT WAS PREPARED BY PAUL D. ENGLE IN THE OFFICE OF O'BRIEN, SUITER & O'BRIEN, INC., 2601 NORTH FEDERAL HIGHWAY, DELRAY BEACH, FLORIDA 33483 (561-276-4501).



LEGEND:  
P.R.M. = PERMANENT REFERENCE MONUMENT (4"x4" CONCRETE MONUMENT WITH BRASS CAP)  
C.A. = CENTRAL ANGLE  
C.B. = CHORD BEARING  
O.R.B. = OFFICIAL RECORD BOOK  
SECTION 13/45/42 = SECTION 13, TOWNSHIP 45 SOUTH, RANGE 42 EAST  
CL = CENTERLINE



SUBDIVISION South Wind Heights Congregate Living Facility  
BOOK 62  
PAGE 159  
FLOOD MAP # 1919  
ZONING PUD  
ZIP CODE 33409  
QUAD # 24  
SE  
TAZ 042  
PUD NAME

NE CORNER SECTION PALM BEACH COUNTY BRASS DISK  
806550.1720  
94267.5580

2724.06' (GROUND), S.2°23'57"W.

806554.4114  
943599.0271

WINDWARD PALM BEACH PLAT THREE (A P.U.D.) (PLAT BOOK 62, PAGES 158-159)

WINDWARD PALM BEACH (A P.U.D.) (PLAT BOOK 61, PAGES 75-79)