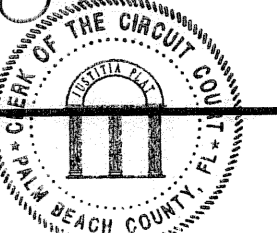


COLONY PALMS
LYING IN SECTION 13, TOWNSHIP 46 SOUTH, RANGE 42 EAST
CITY OF DERAY BEACH, PALM BEACH COUNTY, FLORIDA
A REPLAT OF A PORTION OF THE CARLSON/BLACK PLAT
AS RECORDED IN PLAT BOOK 93, PAGES 58 AND 59, OF THE PUBLIC RECORDS OF
PALM BEACH COUNTY, FLORIDA
SHEET NO. 2 OF 2
DAVIS & PURMORT, INC.
DEERFIELD BEACH, FLORIDA
NOVEMBER, 2005

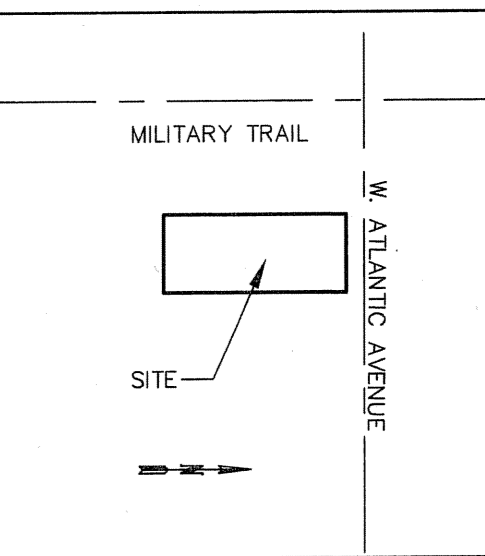
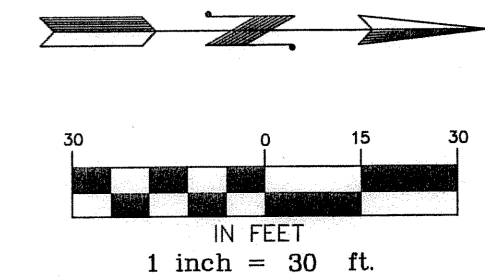
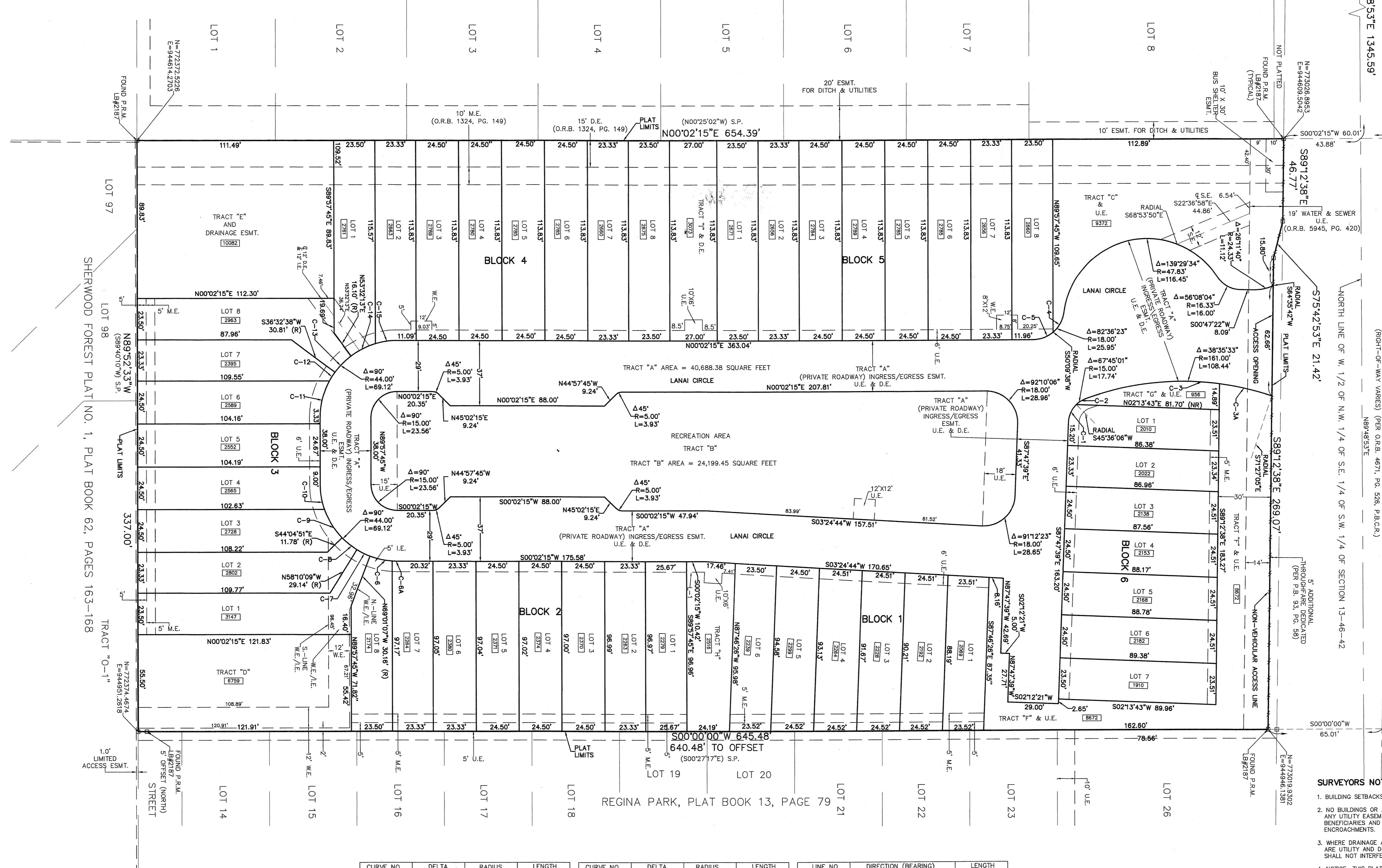
FOUND 2" BRASS DISC.
S.W. CORNER
SECTION 13
TOWNSHIP 46 SOUTH
RANGE 42 EAST

STATE OF FLORIDA
COUNTY OF PALM BEACH
This Plat was filed for
record at 1:09 PM, this 12 day
of Jan. 2005, and duly
recorded in Plat Book No. 106
on Pages 192 thru 193.

SHARON R. BOCK
Clerk and Comptroller
By: Karen A. Pater, D.C.



COUNTRY CLUB ACRES PLAT BOOK 24, PAGE 10



- LEGEND:
SECTION
LICENSE BUSINESS NUMBER
PLAT
MEASURED
RADIAL
PERMANENT REFERENCE MONUMENT
EASEMENT
UTILITY EASEMENT
DRAINAGE ESMT.
WATER ESMT.
SANITARY ESMT.
INGRESS/EGRESS ESMT.
MAINTENANCE ESMT.
RIGHT-OF-WAY
PLAT BOOK
OFFICIAL RECORD BOOK
PAGE
PALM BEACH COUNTY RECORDS
DEED BOOK
STATE PLANE COORDINATES (83 DATUM)
CENTERLINE
NON-VEHICULAR ACCESS LINE
SQUARE FOOTAGE LOT
DELTA
LENGTH

- SURVEYORS' NOTES:
1. BUILDING SETBACKS SHALL CONFORM TO CITY OF DERAY ZONING CODE.
2. NO BUILDINGS OR ANY KIND OF CONSTRUCTION OR TREES OR SHRUBS SHALL BE PLACED ON ANY UTILITY EASEMENT WITHOUT PRIOR WRITTEN APPROVAL OF ALL UTILITY EASEMENT BENEFICIARIES AND ALL APPLICABLE TOWN APPROVALS OR PERMITS AS REQUIRED FOR SUCH ENCROACHMENTS.
3. WHERE DRAINAGE AND UTILITY EASEMENTS INTERSECT, THE AREAS WITHIN THE INTERSECTION ARE UTILITY AND DRAINAGE EASEMENTS, CONSTRUCTION AND MAINTENANCE OF UTILITY FACILITIES SHALL NOT INTERFERE WITH DRAINAGE FACILITIES WITHIN THESE AREAS OF INTERSECTION.
4. NOTICE: THIS PLAT, AS RECORDED IN ITS GRAPHIC FORM, IS THE OFFICIAL DEPICTION OF THE SUBDIVIDED LANDS DESCRIBED HEREIN AND WILL IN NO CIRCUMSTANCES BE SUPPLANTED IN AUTHORITY BY ANY OTHER GRAPHIC OR DIGITAL FORM OF THE PLAT. THERE MAY BE ADDITIONAL RESTRICTIONS THAT ARE NOT RECORDED ON THIS PLAT THAT MAY BE FOUND IN THE PUBLIC RECORDS OF THIS COUNTY.
5. THE CITY OF DERAY BEACH IS HEREBY GRANTED THE RIGHT OF ACCESS FOR EMERGENCY AND MAINTENANCE PURPOSES.
6. THIS INSTRUMENT WAS PREPARED BY DAVIS & PURMORT, INC. 843 SOUTHEAST 8TH AVENUE, DEERFIELD BEACH, FLORIDA, 33441.
7. THE NON-VEHICULAR ACCESS LINE, (SEE DEDICATION NOTES).
8. BEARING BASIS WEST ATLANTIC AVENUE (a.k.a. STATE ROAD 806), BEARS S89°12'38"E.

Table with columns: CURVE NO., DELTA, RADIUS, LENGTH, LINE NO., DIRECTION (BEARING), LENGTH. Contains data for curves C-1 through C-12 and line L-1.

THIS INSTRUMENT PREPARED BY:
DAVIS & PURMORT, INC.
Land Surveyors • Land Development • Consultants • Planners
843 SOUTHEAST 8TH AVENUE - DEERFIELD BEACH, FL 33441
Phone: (954) 421-9101 & (954) 698-9101 fax: (954) 421-5201