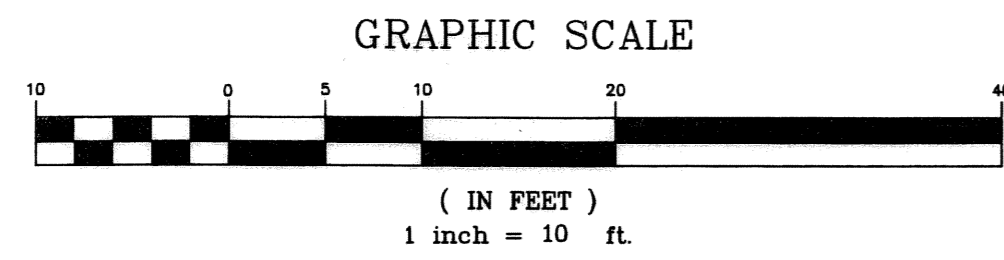


GRAND PALM I OF LAKE WORTH

REPLAT OF LOTS 9 AND 10, BLOCK 66,
 PLAT OF PALM BEACH FARMS COMPANY PLAT NO. 4,
 ADDITION NO. 1 TO THE TOWN OF LAKE WORTH,
 PLAT BOOK 5, PAGE 6, PALM BEACH COUNTY, FLORIDA,
 LYING IN SECTION 34, TOWNSHIP 44 SOUTH, RANGE 43 EAST,
 CITY OF LAKE WORTH, PALM BEACH COUNTY, FLORIDA
 APRIL 2005 SHEET 2 OF 2

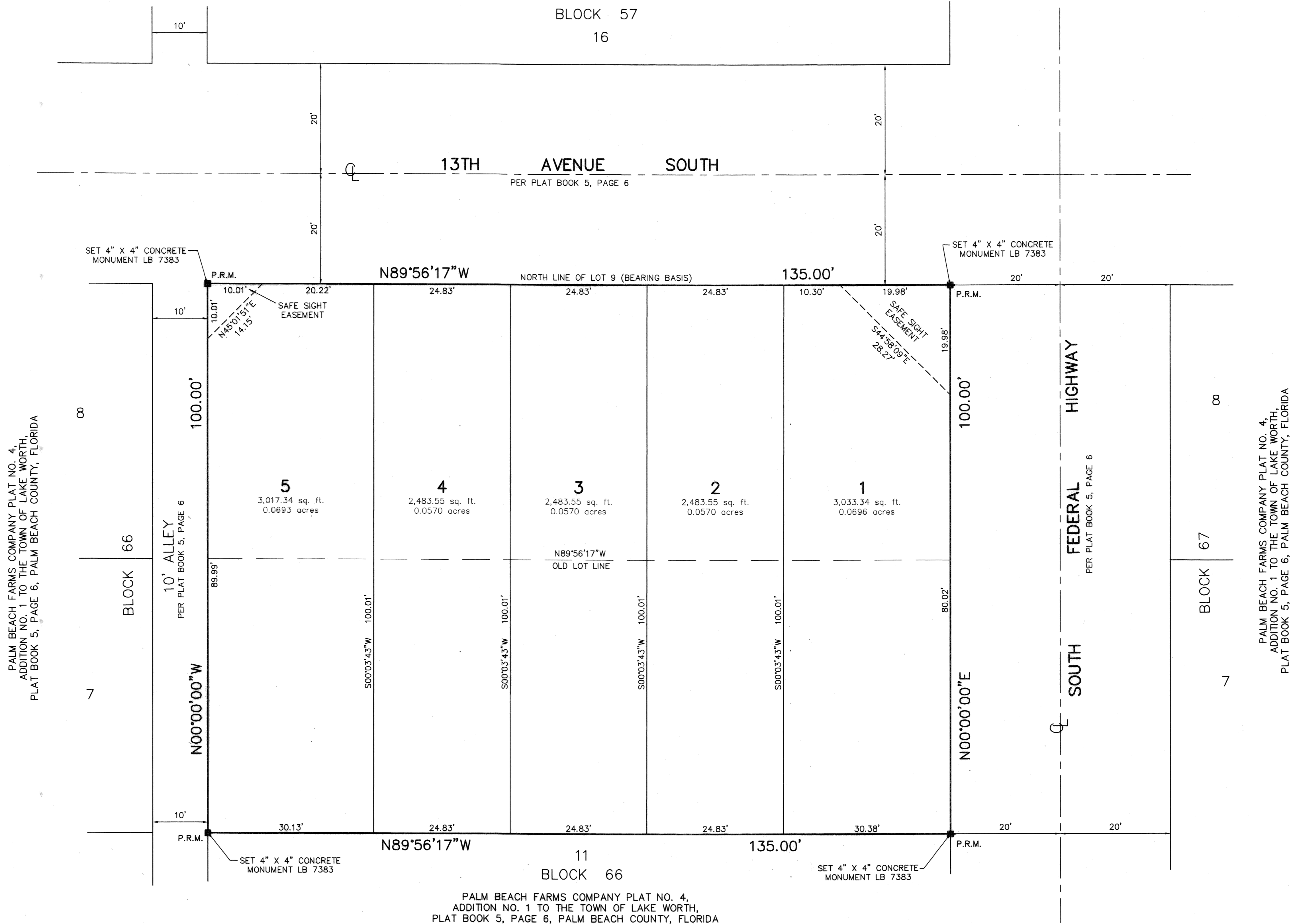
THIS INSTRUMENT WAS PREPARED BY
 JAMES R. ZEIS, P.S.M. 5030, STATE OF FLORIDA
 MANUCY LAND SURVEYORS, INC. (LB 7383)
 801 MAPLEWOOD DRIVE, SUITE 9
 JUPITER, FLORIDA 33458
 561-427-0855

181



PALM BEACH FARMS COMPANY PLAT NO. 4,
 ADDITION NO. 1 TO THE TOWN OF LAKE WORTH,
 PLAT BOOK 5, PAGE 6, PALM BEACH COUNTY, FLORIDA

STATE OF FLORIDA
 COUNTY OF PALM BEACH
 This plat was filed for
 record at _____ M., this _____
 day of _____,
 and duly recorded in
 Plat Book No. _____
 on Pages _____ through _____
 SHARON BOCK
 Clerk & Comptroller
 By _____ D.C.



LEGEND
 ■ - DENOTES PERMANENT REFERENCE MONUMENT, LB 7383
 N.T.S. - DENOTES NOT TO SCALE
 P.R.M. - DENOTES PERMANENT REFERENCE MONUMENT
 P.S.M. - DENOTES PROFESSIONAL SURVEYOR & MAPPER

PALM BEACH FARMS COMPANY PLAT NO. 4,
 ADDITION NO. 1 TO THE TOWN OF LAKE WORTH,
 PLAT BOOK 5, PAGE 6, PALM BEACH COUNTY, FLORIDA

PALM BEACH FARMS COMPANY PLAT NO. 4,
 ADDITION NO. 1 TO THE TOWN OF LAKE WORTH,
 PLAT BOOK 5, PAGE 6, PALM BEACH COUNTY, FLORIDA

PALM BEACH FARMS COMPANY PLAT NO. 4,
 ADDITION NO. 1 TO THE TOWN OF LAKE WORTH,
 PLAT BOOK 5, PAGE 6, PALM BEACH COUNTY, FLORIDA