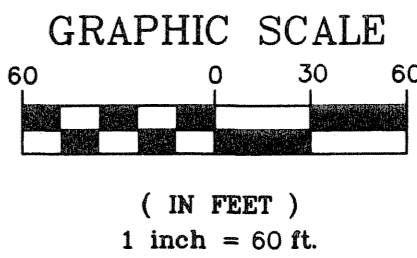
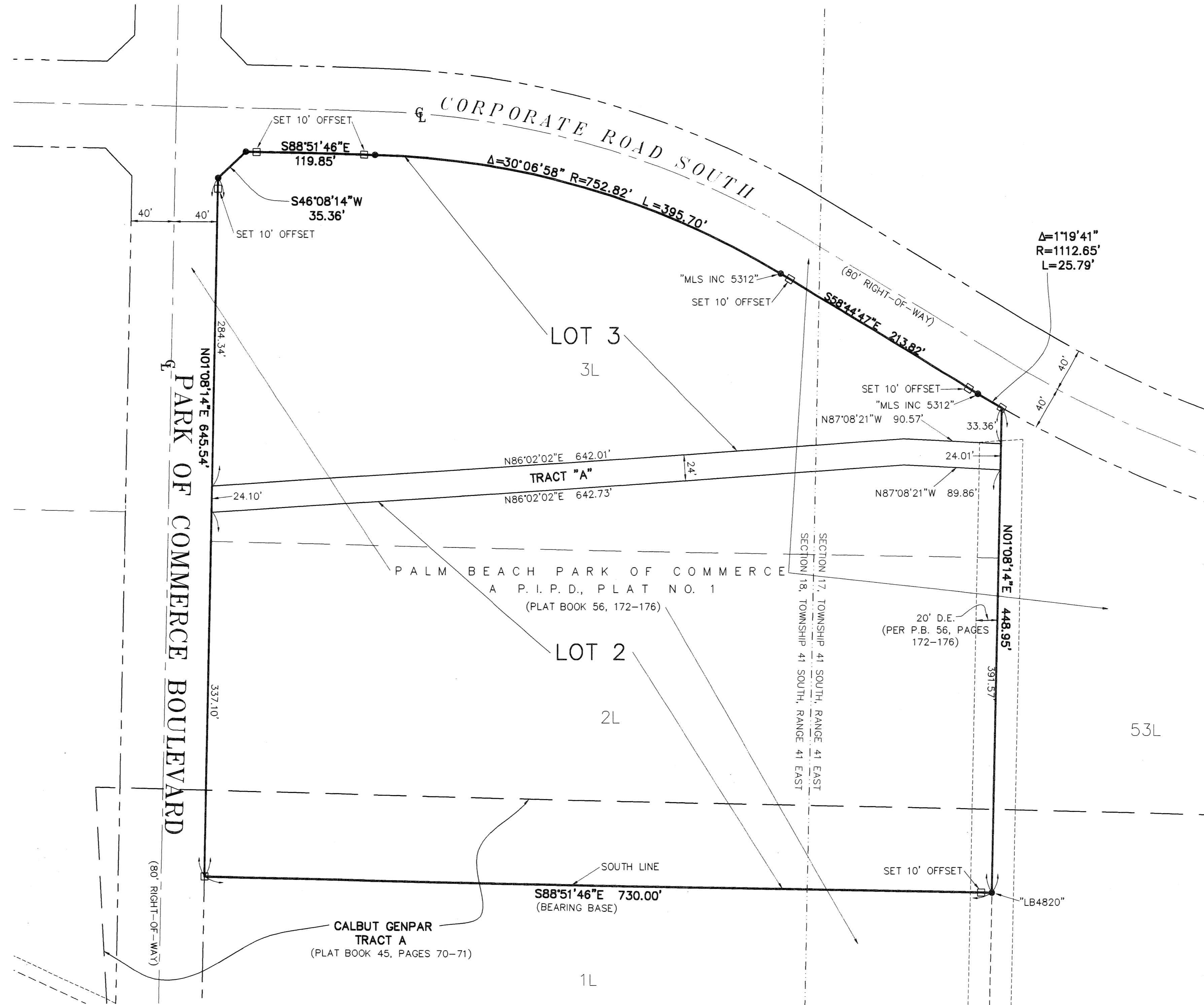


PALM BEACH PARK OF COMMERCE, P.I.P.D. - PLAT VI

A REPLAT OF A PORTION OF LOTS 2L AND 3L, PALM BEACH PARK OF COMMERCE, A P.I.P.D., PLAT NO. 1, PLAT BOOK 56, PAGE 172-176,
 WITHIN SECTIONS 17 AND 18, TOWNSHIP 41 SOUTH, RANGE 41 EAST, PALM BEACH COUNTY, FLORIDA
 (BEING A PARTIAL REPLAT OF A PORTION OF "CALBUT GENPAR TRACT 'A' ",
 PLAT BOOK 45, PAGES 70 & 71, OF THE PUBLIC RECORDS OF PALM BEACH COUNTY)

0353-008

137



BEARING BASE

THE SOUTH LINE OF LOT 2L, PALM BEACH PARK OF COMMERCE, P.I.P.D. PLAT NO. 1, IS TAKEN TO BEAR SOUTH 88°51'46" EAST AND ALL OTHER BEARINGS SHOWN HEREON ARE RELATIVE THERETO.

LEGEND

- ⊕ - CENTERLINE
- - P.R.M. (PERMANENT REFERENCE MONUMENT) SET NO. LB 959
- - FOUND 5/8" IRON ROD & CAP (NOT LEGIBLE UNLESS NOTED)
- U.E. - UTILITY EASEMENT
- D.E. - PRIVATE DRAINAGE EASEMENT
- (R) - RADIAL LINE
- O.R.B. - OFFICIAL RECORDS BOOK
- P.G. - PAGE
- Δ - DELTA ANGLE
- L - LENGTH
- R - RADIUS
- CH - CHORD DISTANCE
- CB - CHORD BEARING
- C.U.E. - CITY UTILITY EASEMENT
- A.E. - ACCESS EASEMENT
- P.B. - PLAT BOOK

PLAT 6
 P.B. PARK OF COMMERCE, P.I.P.D.
 BOOK 106
 PAGE 137
 FLOOD ZONE # 0504
 ZONING P.I.P.D.
 ZNY CODE 33478
 SE
 TAX 030
 PUD NAME
 © 2014 LBEH, Inc.

lbf CONSULTING CIVIL ENGINEERS, SURVEYORS & MAPPERS
 "Partners For Results, Value By Design"
 3550 S.W. Corporate Parkway, Palm City, Florida 34990
 (772) 286-3883 Fax: (772) 286-3925
 BPR & FBPE License No: 959 www.lbf.com

2 2
 Sheet of