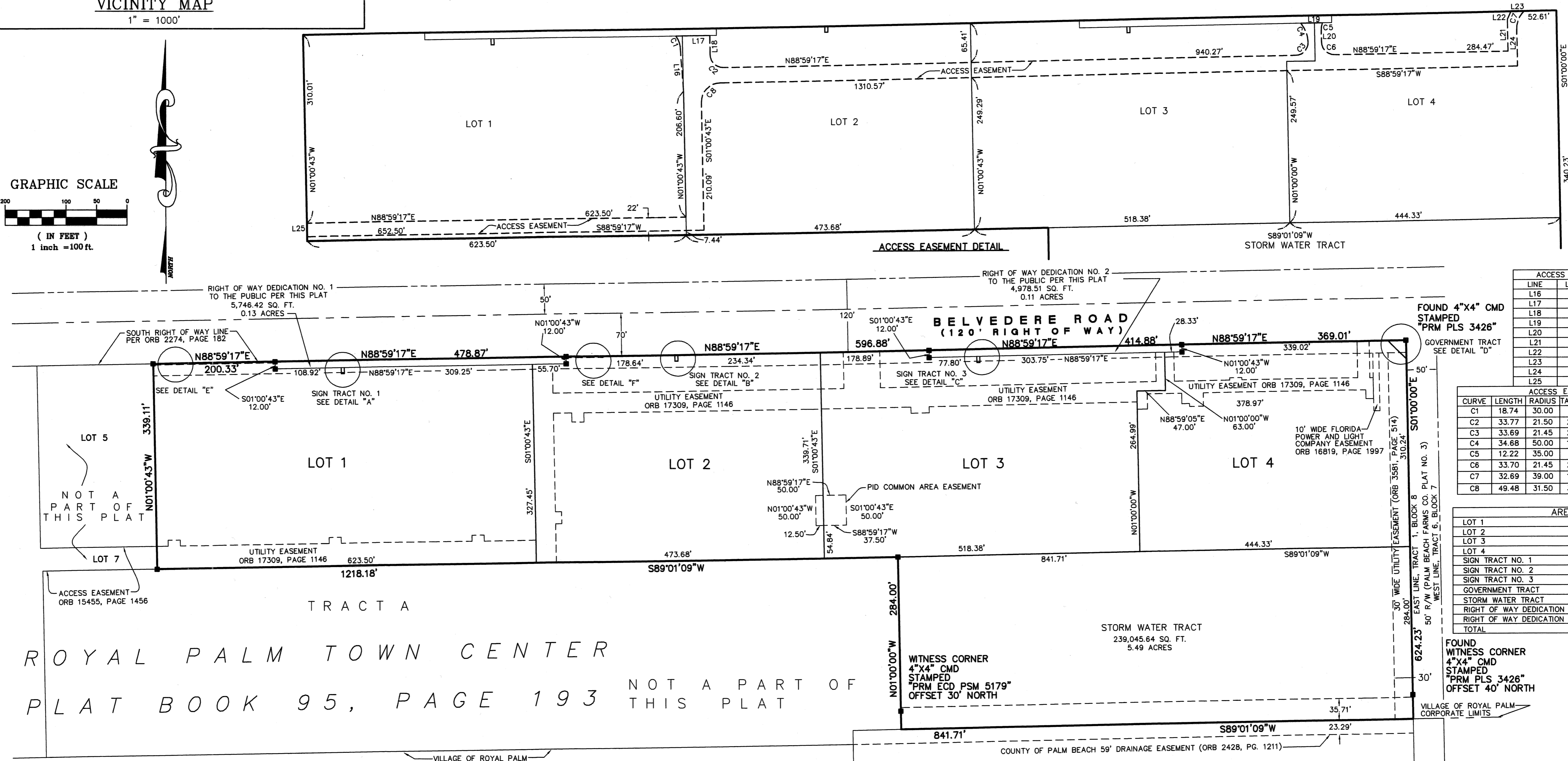
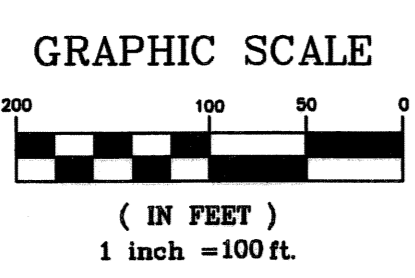
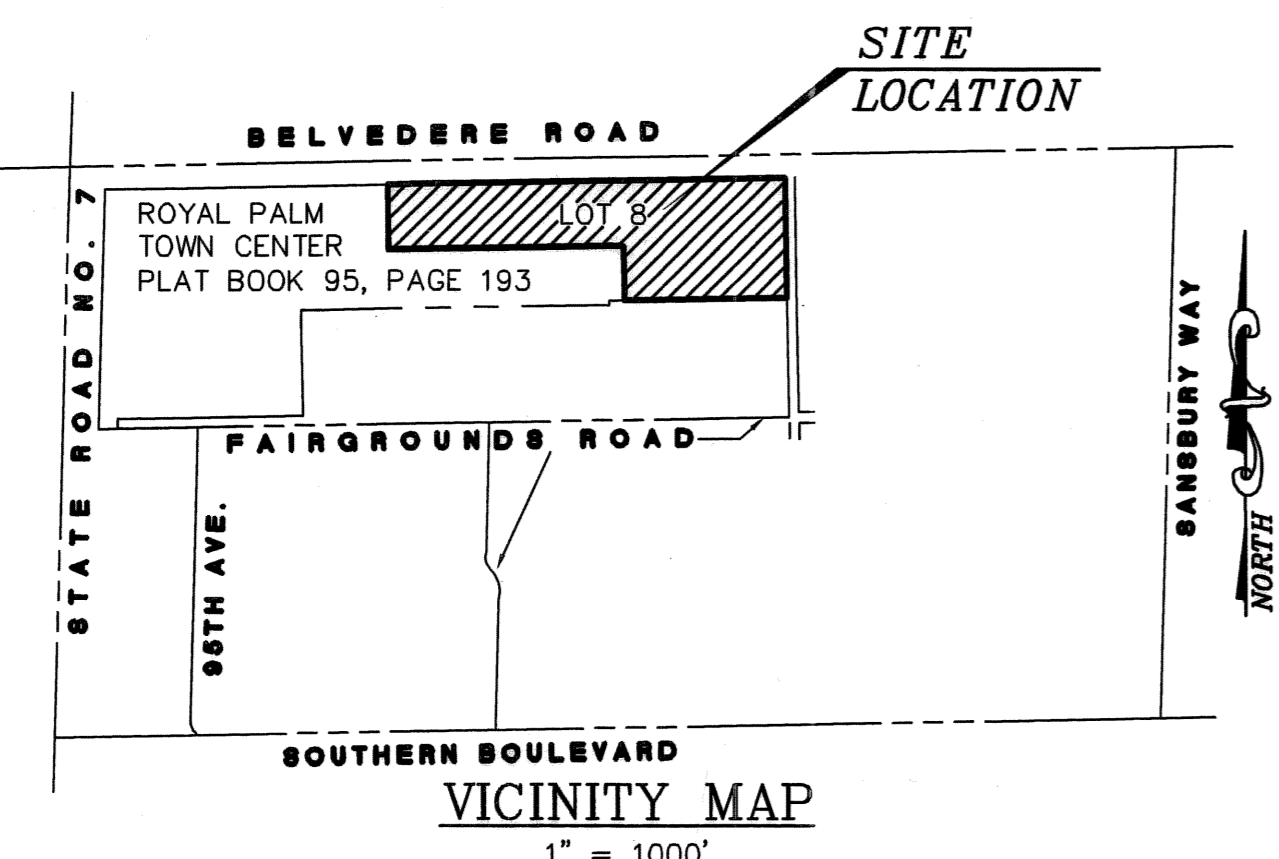


STATE OF FLORIDA
COUNTY OF PALM BEACH
THIS PLAT WAS FILED FOR RECORD
AT _____ THIS _____ DAY OF
DAY OF _____, 2005, AND DULY
RECORDED IN PLAT BOOK
ON PAGES _____ THROUGH _____

SHARON R. BOCK
CLERK AND COMPTROLLER OF THE
CIRCUIT COURT
BY: _____
DEPUTY CLERK

ROYAL PALM BUSINESS PLAZA
VILLAGE OF ROYAL PALM BEACH
PALM BEACH COUNTY, FLORIDA

A PARCEL OF LAND SITUATE LYING AND BEING IN SECTION 31, TOWNSHIP 43 SOUTH, RANGE 42 EAST OF TALLAHASSEE BASE MERIDIAN AND BEING A RE-PLAT OF ALL OF LOT 8, ROYAL PALM TOWN CENTER AS RECORDED IN PLAT BOOK 95, PAGE 193, PUBLIC RECORDS OF PALM BEACH COUNTY, FLORIDA.



ACCESS EASEMENT LINE TABLE

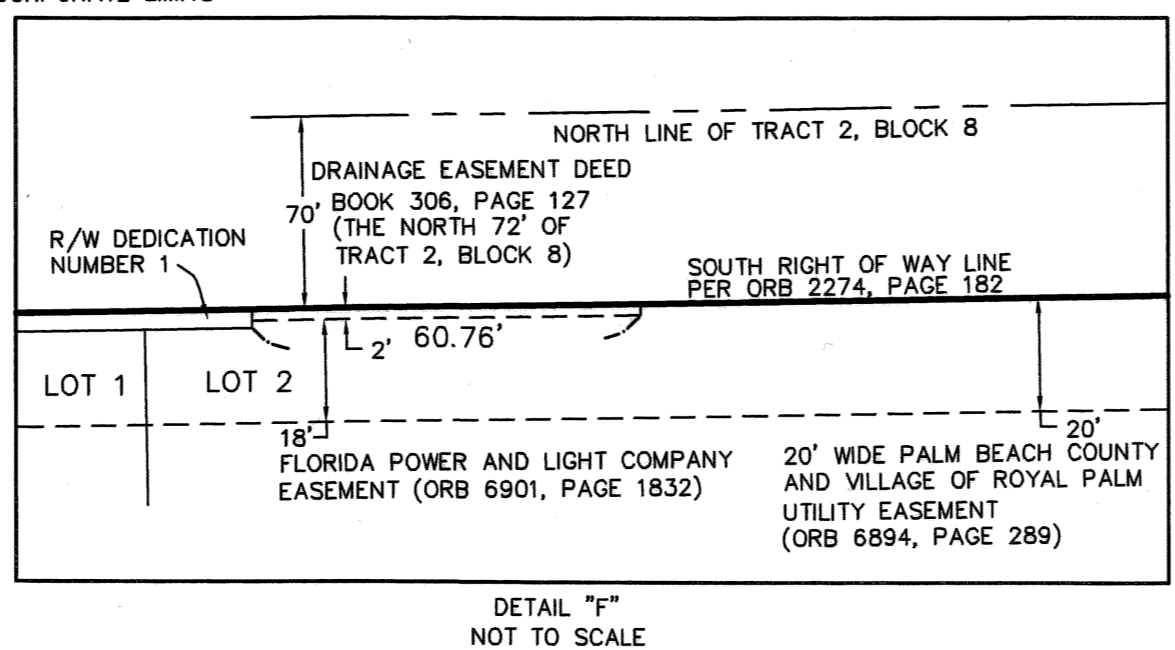
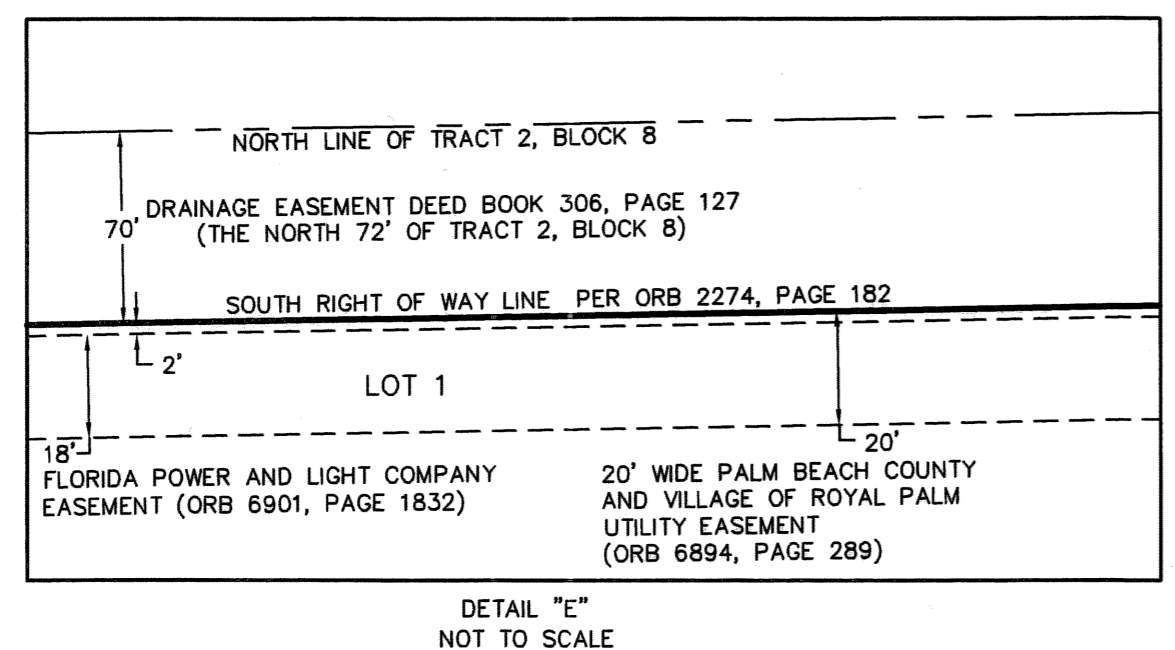
LINE	LENGTH	BEARING
L16	74.33	N04°13'21"W
L17	55.65	N88°59'17"E
L18	31.91	S01°00'43"E
L19	35.72	N88°59'17"E
L20	19.99	S01°00'00"E
L21	52.61	N01°06'12"W
L22	14.18	N24°28'39"E
L23	21.80	N88°59'17"E
L24	61.40	S01°06'12"E
L25	22.00	N01°00'43"W

ACCESS EASEMENT CURVE TABLE

CURVE	LENGTH	TANGENT	CHORD	BEARING	DELTA
C1	18.74	30.00	9.69	N22°06'53"W	35°47'05"
C2	33.77	21.50	21.50	S46°00'43"E	90°00'00"
C3	33.69	21.45	21.45	N43°59'39"E	89°59'17"
C4	34.68	50.00	18.07	N20°52'14"W	39°44'28"
C5	12.22	35.00	6.17	S09°00'13"W	20°00'25"
C6	33.70	21.45	21.45	S46°00'21"E	90°00'43"
C7	32.69	39.00	31.74	S22°54'42"W	48°01'49"
C8	49.48	31.50	17.38	S43°59'17"W	90°00'00"

AREA TABULATIONS

TRACT	AREA (SQ. FT.)	ACRES
LOT 1	206,414.55	4.74
LOT 2	160,133.27	3.68
LOT 3	175,016.32	4.02
LOT 4	148,807.10	3.37
SIGN TRACT NO. 1	50.00	0.001
SIGN TRACT NO. 2	50.00	0.001
SIGN TRACT NO. 3	50.00	0.001
GOVERNMENT TRACT	449.81	0.01
STORM WATER TRACT	239,045.64	5.49
RIGHT OF WAY DEDICATION NO. 1	5,746.42	0.13
RIGHT OF WAY DEDICATION NO. 2	4,978.51	0.11
TOTAL	939,741.62	21.553



LINE TABLE

LINE	LENGTH	BEARING
L1	5.00	N88°59'17"E
L2	10.00	S01°00'43"E
L3	5.00	S88°59'17"W
L4	10.00	N01°00'43"W

SIGN TRACT NO. 1
50.00 SQ. FT.
0.001 ACRES

DETAIL "A"

LINE TABLE

LINE	LENGTH	BEARING
L5	5.00	N88°59'17"E
L6	10.00	S01°00'43"E
L7	5.00	S88°59'17"W
L8	10.00	N01°00'43"W

SIGN TRACT NO. 2
50.00 SQ. FT.
0.001 ACRES

DETAIL "B"

- LEGEND OF SYMBOLS
- = DENOTES 5/8" IRC STAMPED "LB 696" SET (UNLESS OTHERWISE NOTED)
 - = DENOTES PERMANENT REFERENCE MONUMENT STAMPED "PRM ECD PRM 5179" (EXCEPT AS NOTED)
 - = DENOTES PERMANENT REFERENCE MONUMENT SET (PK AND DISK STAMPED "ECD PRM 5179")
 - = PROPERTY LINE
 - - - = RIGHT-OF-WAY LINE
 - · - · = EASEMENT LINE
 - · — · = TRACT LINE

- ABBREVIATIONS
- | | | | |
|-----|---|-----|----------------------------------|
| DWG | DRAWING | POB | POINT OF BEGINNING |
| E | EAST | PSM | PROFESSIONAL SURVEYOR AND MAPPER |
| ECD | E.C. DEMETER | R | RADIUS |
| INC | INCORPORATED | RNG | RANGE |
| IRC | IRON ROD WITH CAP | R/W | RIGHT OF WAY |
| LB | LICENSED BUSINESS | S | SOUTH |
| N | NORTH | S | SECTION |
| ORB | OFFICIAL RECORD BOOK | SR | STATE ROAD |
| PB | PLAT BOOK | TWP | TOWNSHIP |
| PG | PAGE | US | UNITED STATES |
| PK | PARKER KALON | W | WEST |
| PRM | PERMANENT REFERENCE MONUMENT 4"x4" CONCRETE MONUMENT STAMPED "PRM ECD PSM 5179" | | |

LINE TABLE

LINE	LENGTH	BEARING
L9	5.00	N88°59'17"E
L10	10.00	S01°00'43"E
L11	5.00	S88°59'17"W
L12	10.00	N01°00'43"W

SIGN TRACT NO. 3
50.00 SQ. FT.
0.001 ACRES

DETAIL "C"

LINE TABLE

LINE	LENGTH	BEARING
L13	29.99	S01°00'00"E
L14	42.41	S46°00'22"E
L15	29.99	N88°59'17"E

GOVERNMENT TRACT
449.81 SQ. FT.
0.01 ACRES

DETAIL "D"

Kimley-Horn and Associates, Inc.
601 21st Street, Suite 400, Vero Beach, FL 32960
Phone (772)562-7981 Fax (772)562-9689