

# "COASTAL BAY COLONY REPLAT, A P.U.D."

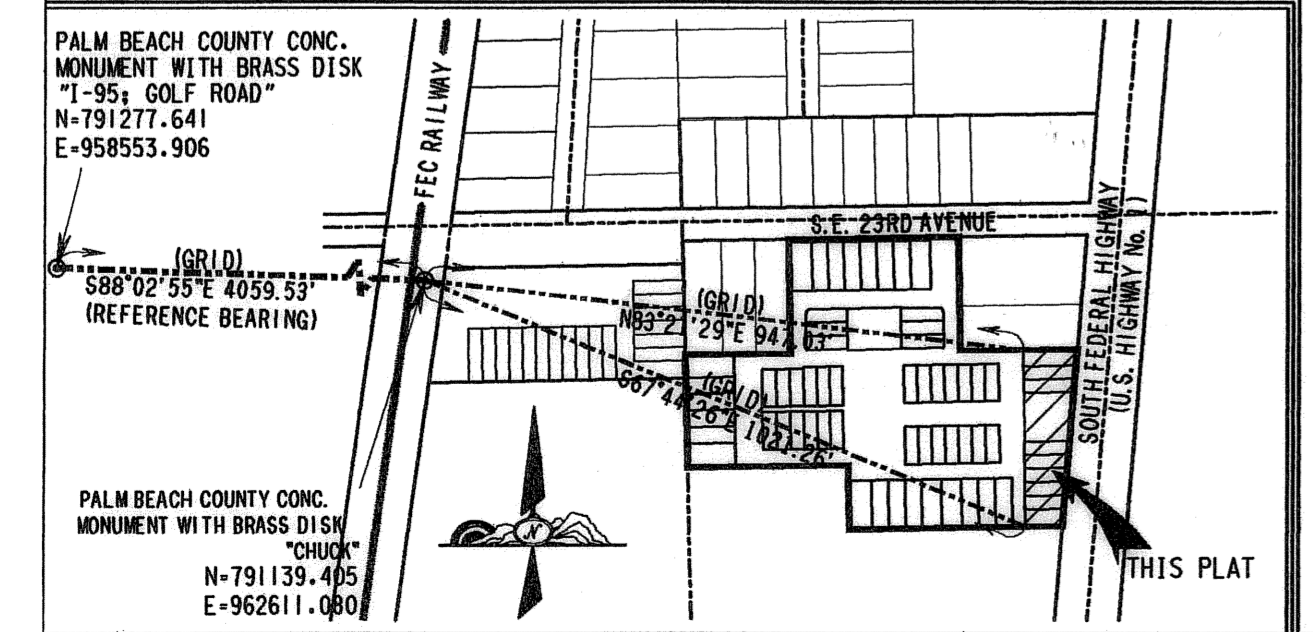
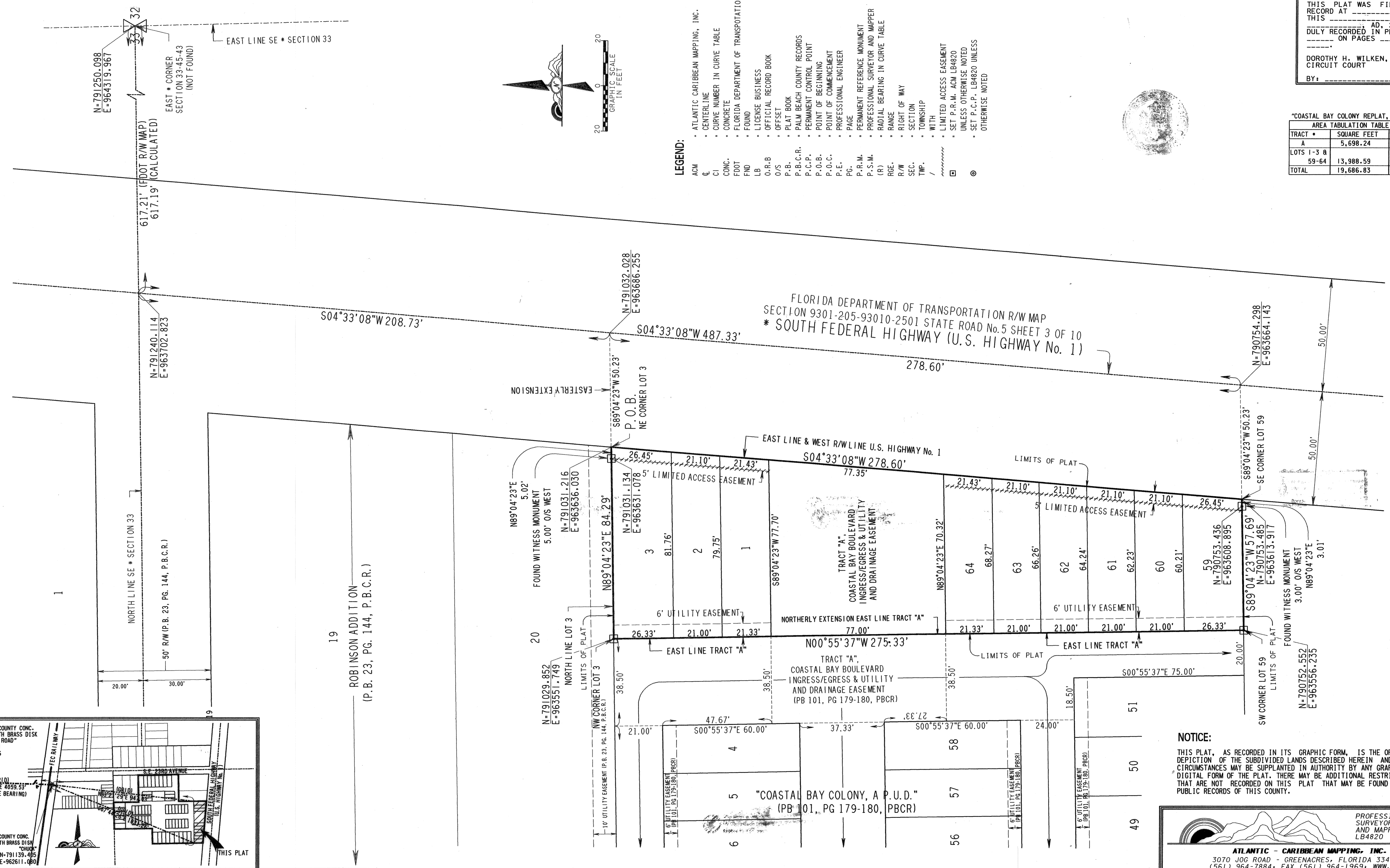
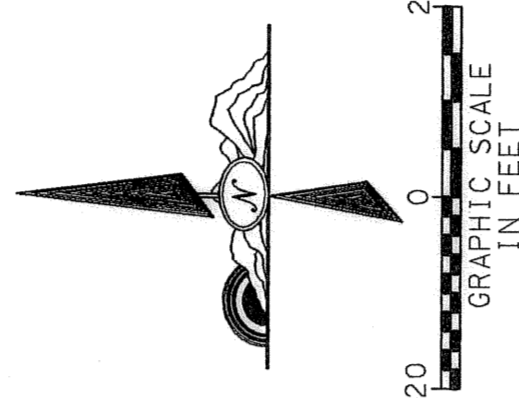
BEING A REPLAT OF LOTS 1, 2, 3, 59, 60, 61, 62, 63 & 64, TOGETHER WITH A PORTION OF TRACT "A", "COASTAL BAY COLONY, A P.U.D.", ACCORDING TO THE PLAT THEREOF AS RECORDED IN PLAT BOOK 101, PAGES 179 THRU 180, OF THE PUBLIC RECORDS OF PALM BEACH COUNTY, FLORIDA, SAID LANDS LYING IN THE SOUTHEAST ONE-QUARTER (SE 1/4) OF SECTION 33, TOWNSHIP 45 SOUTH, RANGE 43 EAST, CITY OF BOYNTON BEACH, PALM BEACH COUNTY, FLORIDA.  
SHEET 2 OF 2, JANUARY, 2005

STATE OF FLORIDA } ss  
COUNTY OF PALM BEACH }  
THIS PLAT WAS FILED FOR RECORD AT \_\_\_\_\_ DAY OF THIS \_\_\_\_\_ AD, 2005 AND DULY RECORDED IN PLAT BOOK \_\_\_\_\_ ON PAGES \_\_\_\_\_ THRU \_\_\_\_\_  
DOROTHY H. WILKEN, CLERK  
CIRCUIT COURT  
BY: \_\_\_\_\_ DC

"COASTAL BAY COLONY REPLAT, A P.U.D."

AREA TABULATION TABLE		
TRACT *	SQUARE FEET	ACRES
A	5,698.24	0.131
LOTS 1-3 & 59-64	13,988.59	0.321
TOTAL	19,686.83	0.452

- LEGEND:**
- ACM ATLANTIC CARIBBEAN MAPPING, INC.
  - C CENTERLINE
  - CI CURVE NUMBER IN CURVE TABLE
  - CONC. CONCRETE
  - FOOT FLORIDA DEPARTMENT OF TRANSPORTATION
  - FB FOUND
  - LB LICENSE BUSINESS
  - O.R.B. OFFICIAL RECORD BOOK
  - O/S OFFSET
  - P.B. PLAT BOOK
  - P.B.C.R. PALM BEACH COUNTY RECORDS
  - P.C.P. PERMANENT CONTROL POINT
  - P.O.B. POINT OF BEGINNING
  - P.O.C. POINT OF COMMENCEMENT
  - P.E. PROFESSIONAL ENGINEER
  - PG. PAGE
  - P.R.M. PERMANENT REFERENCE MONUMENT
  - P.S.M. PROFESSIONAL SURVEYOR AND MAPPER
  - (R) RADIAL BEARING IN CURVE TABLE
  - RGE. RANGE
  - R/W RIGHT OF WAY
  - SEC. SECTION
  - TWP. TOWNSHIP
  - / WITH
  - LIMITED ACCESS EASEMENT
  - SET P.R.M. ACM LB4820 UNLESS OTHERWISE NOTED
  - SET P.C.P. LB4820 UNLESS OTHERWISE NOTED



**NOTICE:**  
THIS PLAT, AS RECORDED IN ITS GRAPHIC FORM, IS THE OFFICIAL DEPICTION OF THE SUBDIVIDED LANDS DESCRIBED HEREIN AND IN NO CIRCUMSTANCES MAY BE SUPPLANTED IN AUTHORITY BY ANY GRAPHIC OR DIGITAL FORM OF THE PLAT. THERE MAY BE ADDITIONAL RESTRICTIONS THAT ARE NOT RECORDED ON THIS PLAT THAT MAY BE FOUND IN THE PUBLIC RECORDS OF THIS COUNTY.

PROFESSIONAL SURVEYORS AND MAPPERS LB4820  
**ATLANTIC - CARIBBEAN MAPPING, INC.**  
3070 JOG ROAD - GREENACRES, FLORIDA 33467  
(561) 964-7884; FAX (561) 964-1969; WWW.ACMIINC.CO