

BORLAND CENTER

IN SECTION 1, TOWNSHIP 42 SOUTH, RANGE 42 EAST
CITY OF PALM BEACH GARDENS, PALM BEACH COUNTY, FLORIDA
NOVEMBER 2004

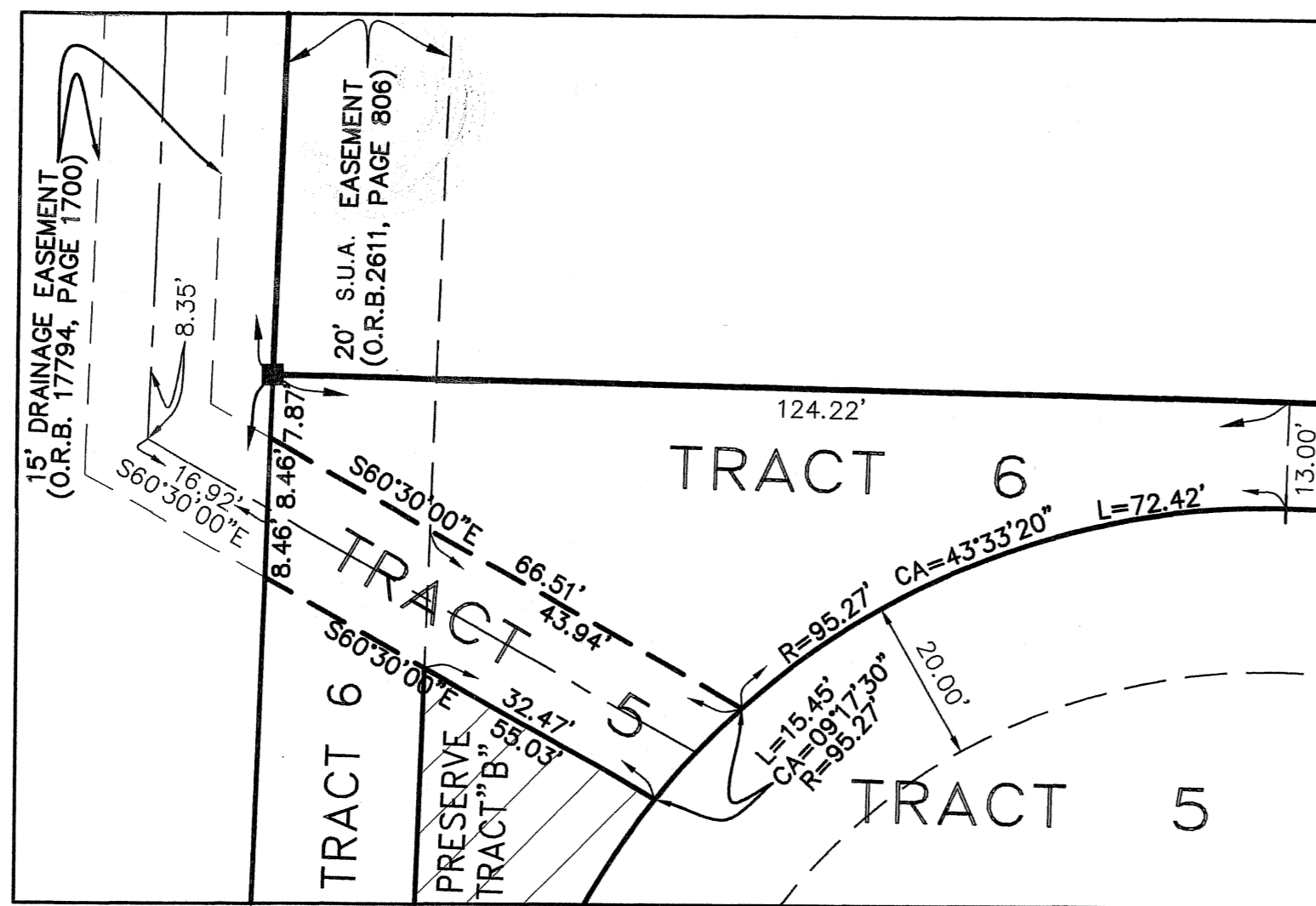
117

STATE OF FLORIDA)
COUNTY OF PALM BEACH) SS

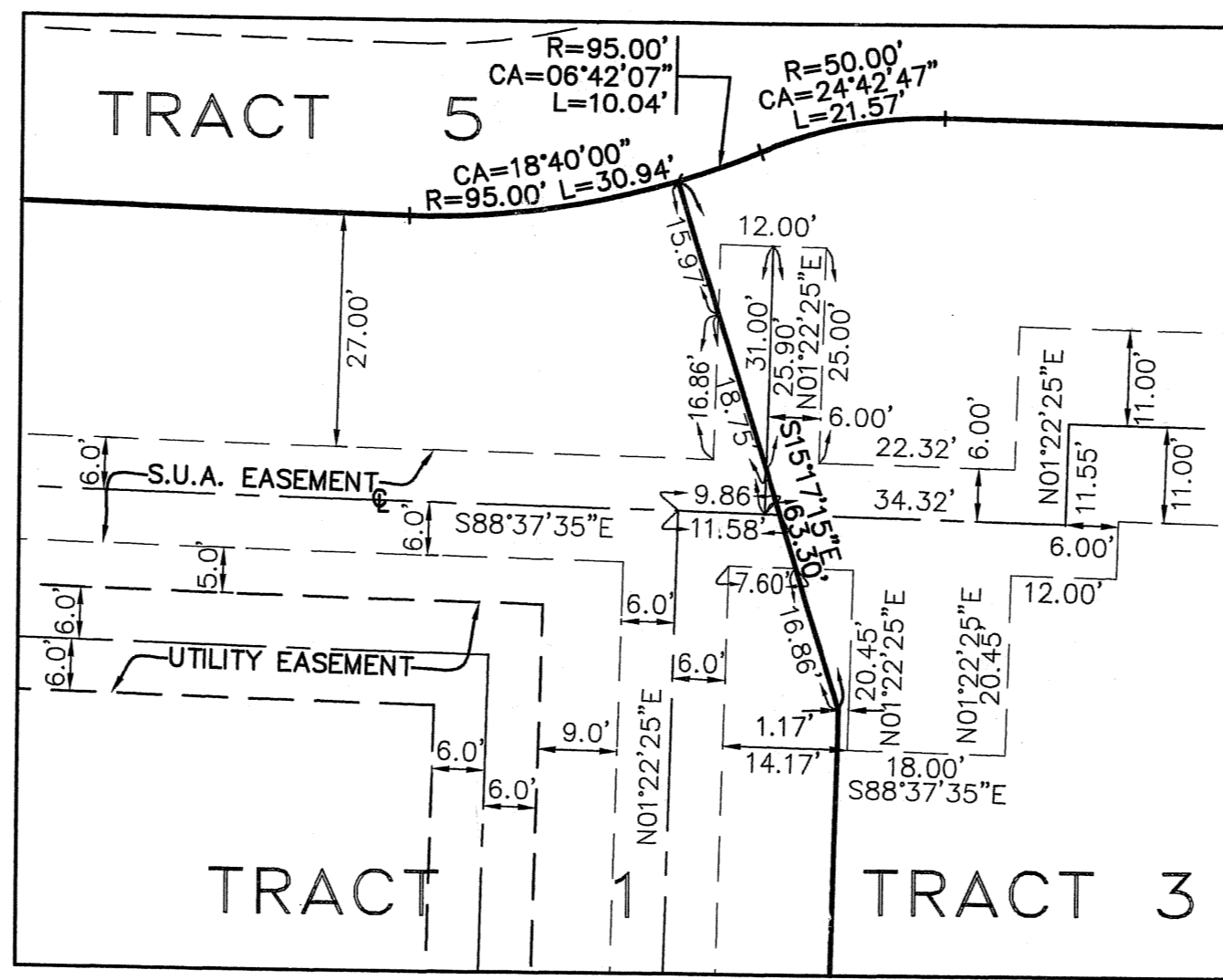
THIS PLAT WAS FILED FOR
RECORD AT _____ DAY OF
_____, A.D., 2004 AND
DULY RECORDED IN PLAT BOOK
_____, ON PAGES _____ AND

DOROTHY H. WILKEN, CLERK
CIRCUIT COURT

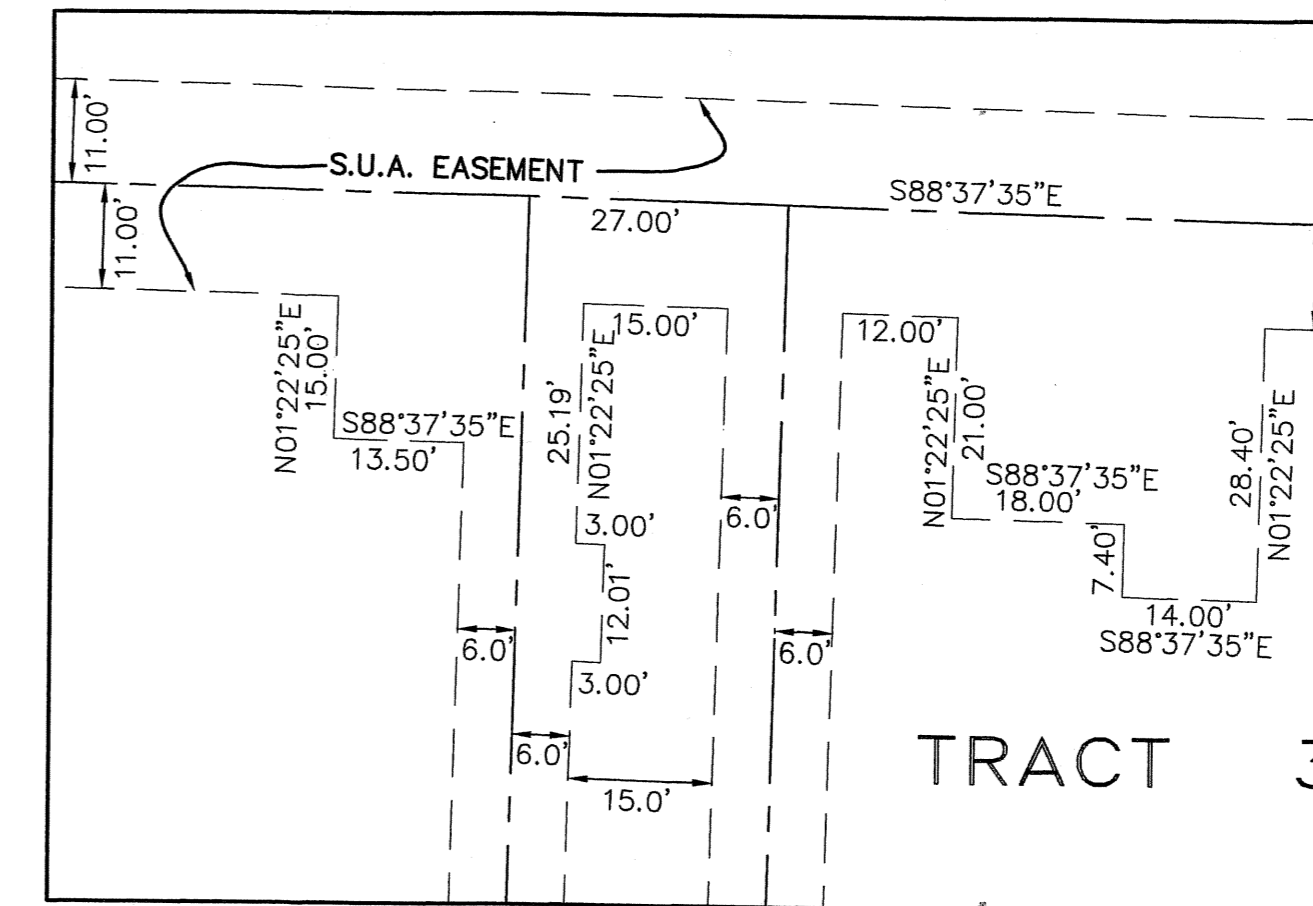
BY: _____ DC



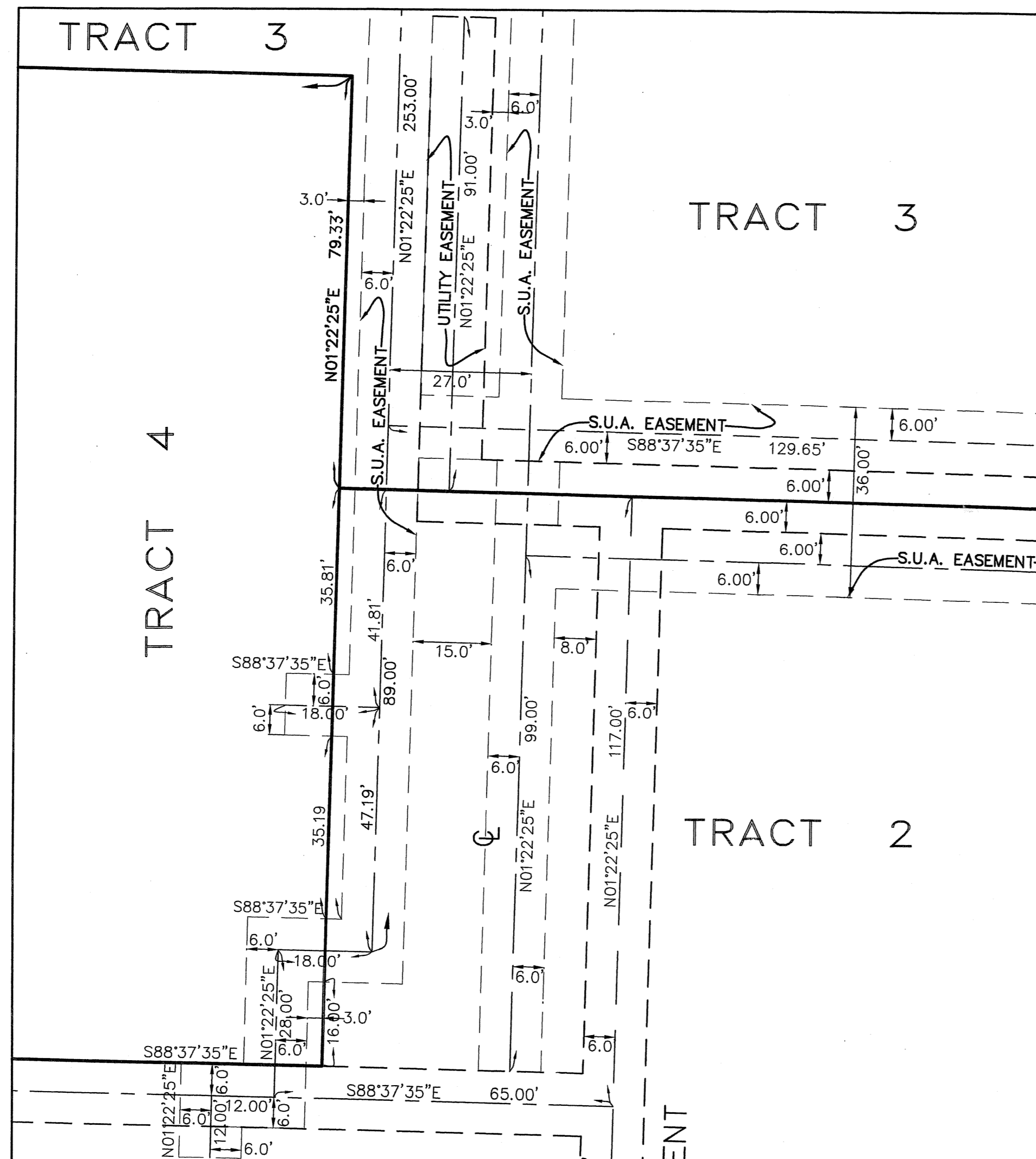
DETAIL #1
FROM SHEET 3 OF 8



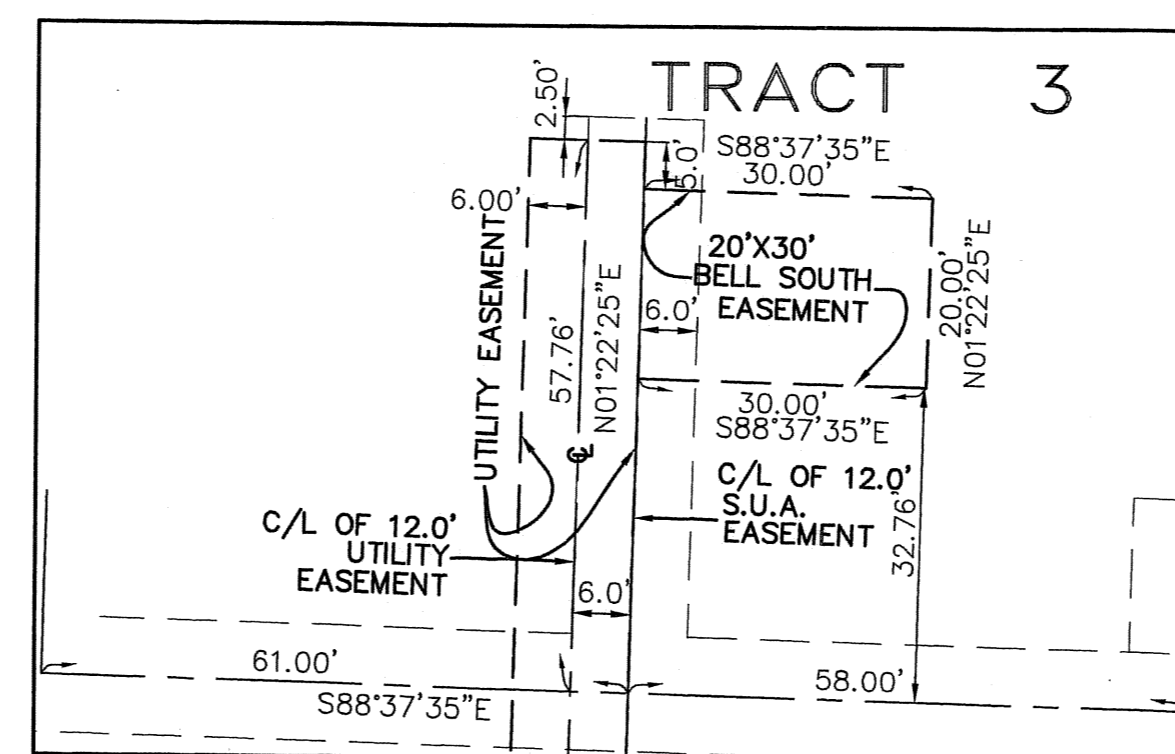
DETAIL #2
FROM SHEET 3 OF 8



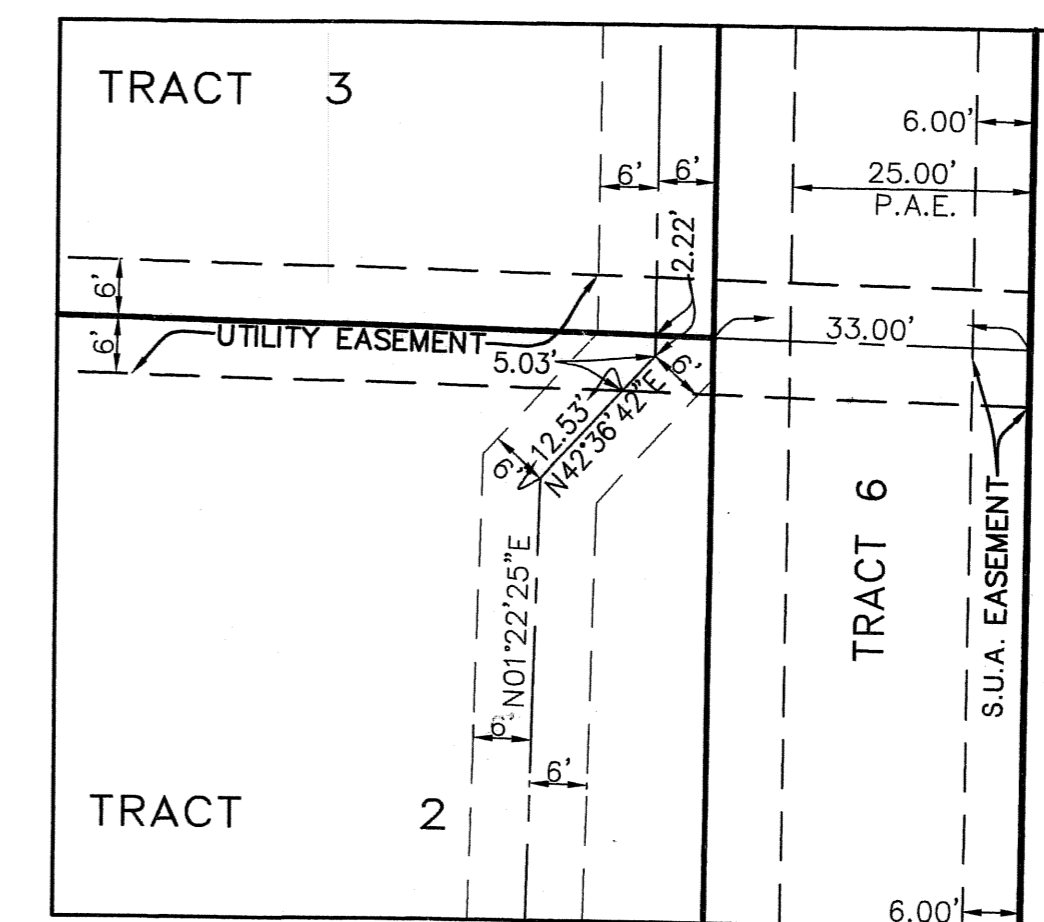
DETAIL #3
FROM SHEET 4 OF 8



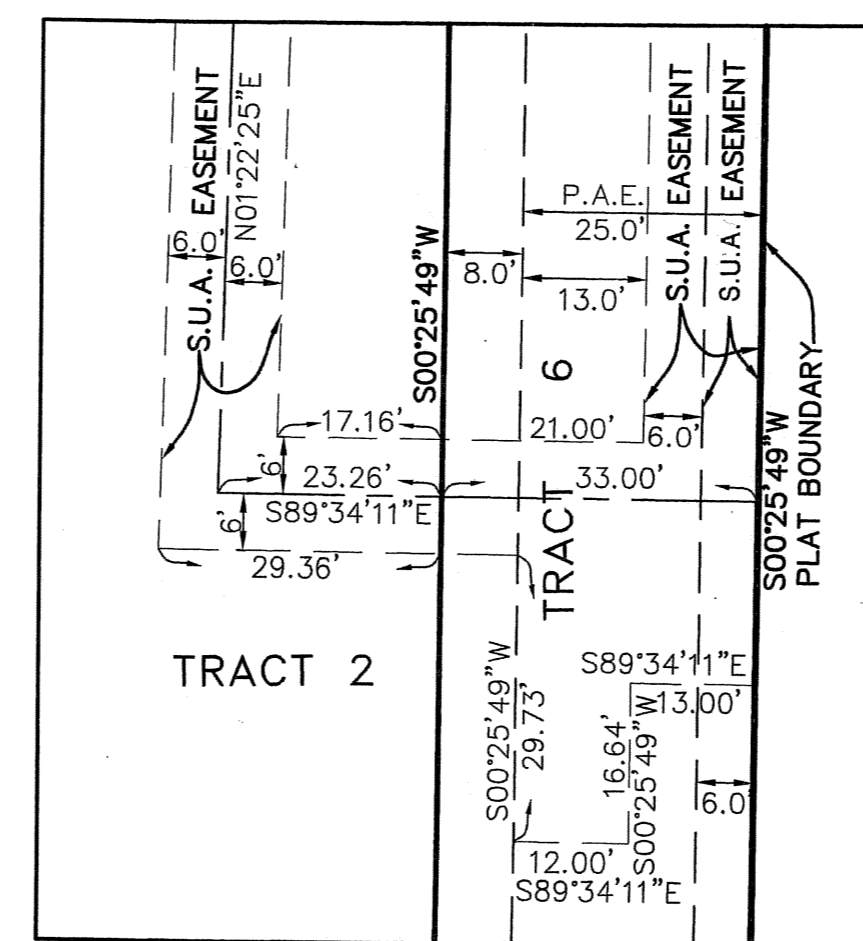
DETAIL #4
FROM SHEETS 4 AND 6 OF 8



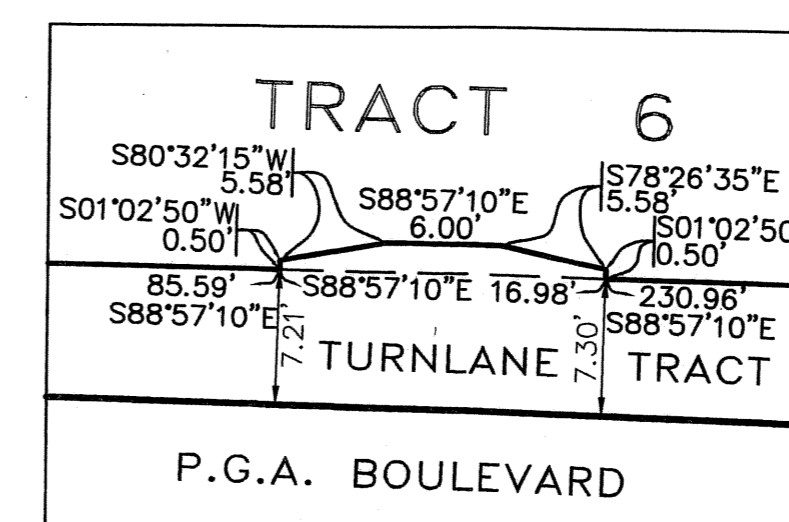
DETAIL #5
FROM SHEET 4 OF 8



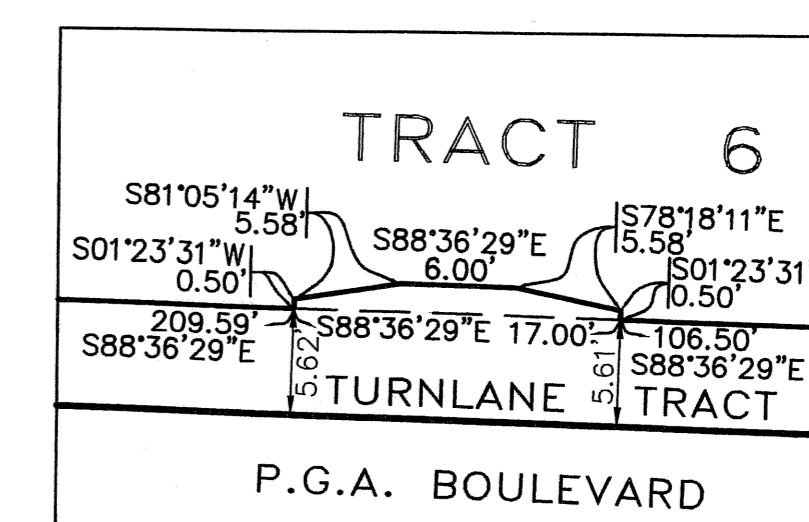
DETAIL #6
FROM SHEET 4 OF 8



DETAIL #7
FROM SHEET 6 OF 8



DETAIL #8
FROM SHEET 6 OF 8
SCALE: 1"=10'



DETAIL #9
FROM SHEET 5 OF 8
SCALE: 1"=10'