

MIRASOL PLAT SIX

PART OF GOLF DIGEST P.C.D.
 BEING IN SECTION 33, TOWNSHIP 41 SOUTH, RANGE 42 EAST,
 AND SECTIONS 03 AND 04, TOWNSHIP 42 SOUTH, RANGE 42 EAST,
 CITY OF PALM BEACH GARDENS, PALM BEACH COUNTY, FLORIDA
 SHEET 9 OF 21

97

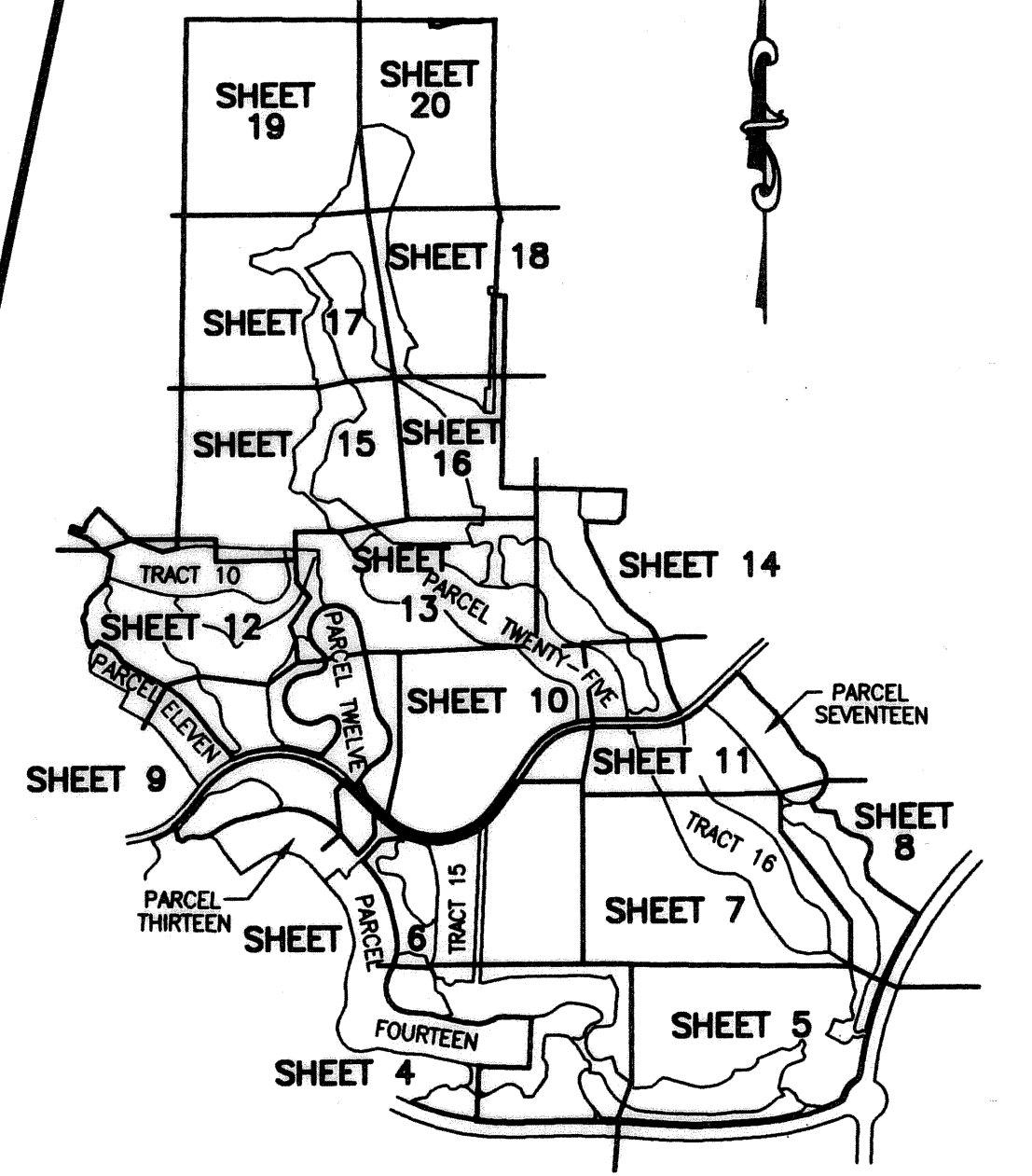
STATE OF FLORIDA
 COUNTY OF PALM BEACH
 THIS PLAT WAS FILED FOR
 RECORD _____ DAY OF _____
 AD. 2005 AND DULY RECORDED
 IN PLAT BOOK _____ ON PAGES
 _____ THROUGH _____

SHARON R. BOCK, CLERK
 BY: _____ D.C.

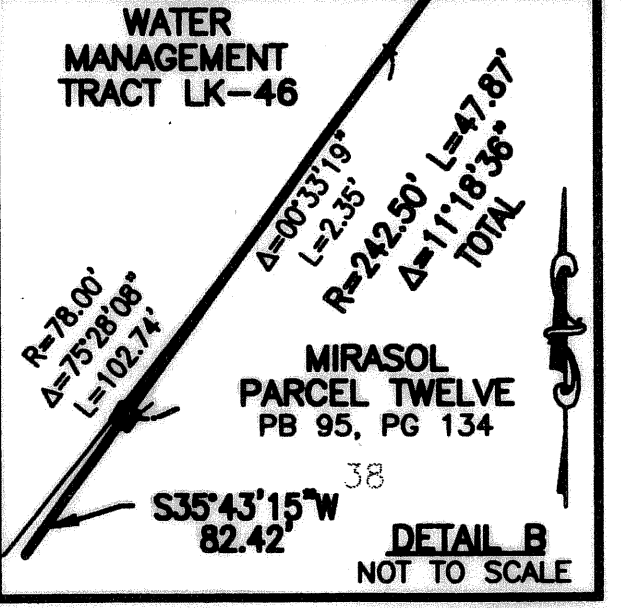
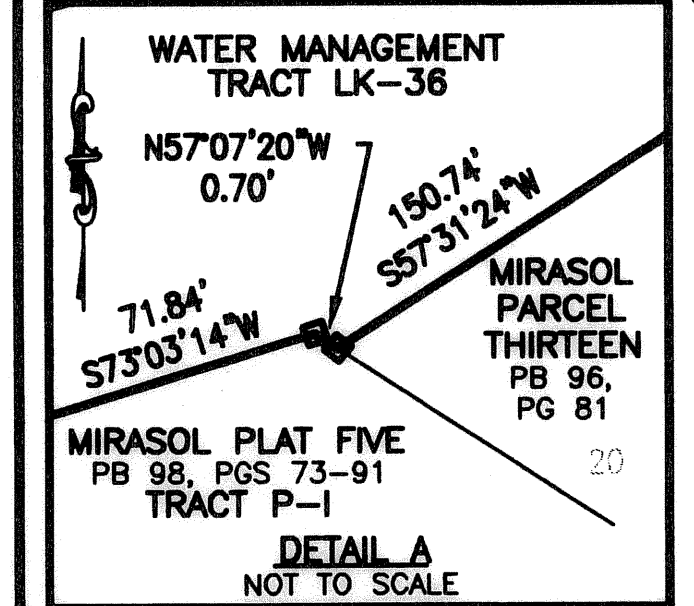
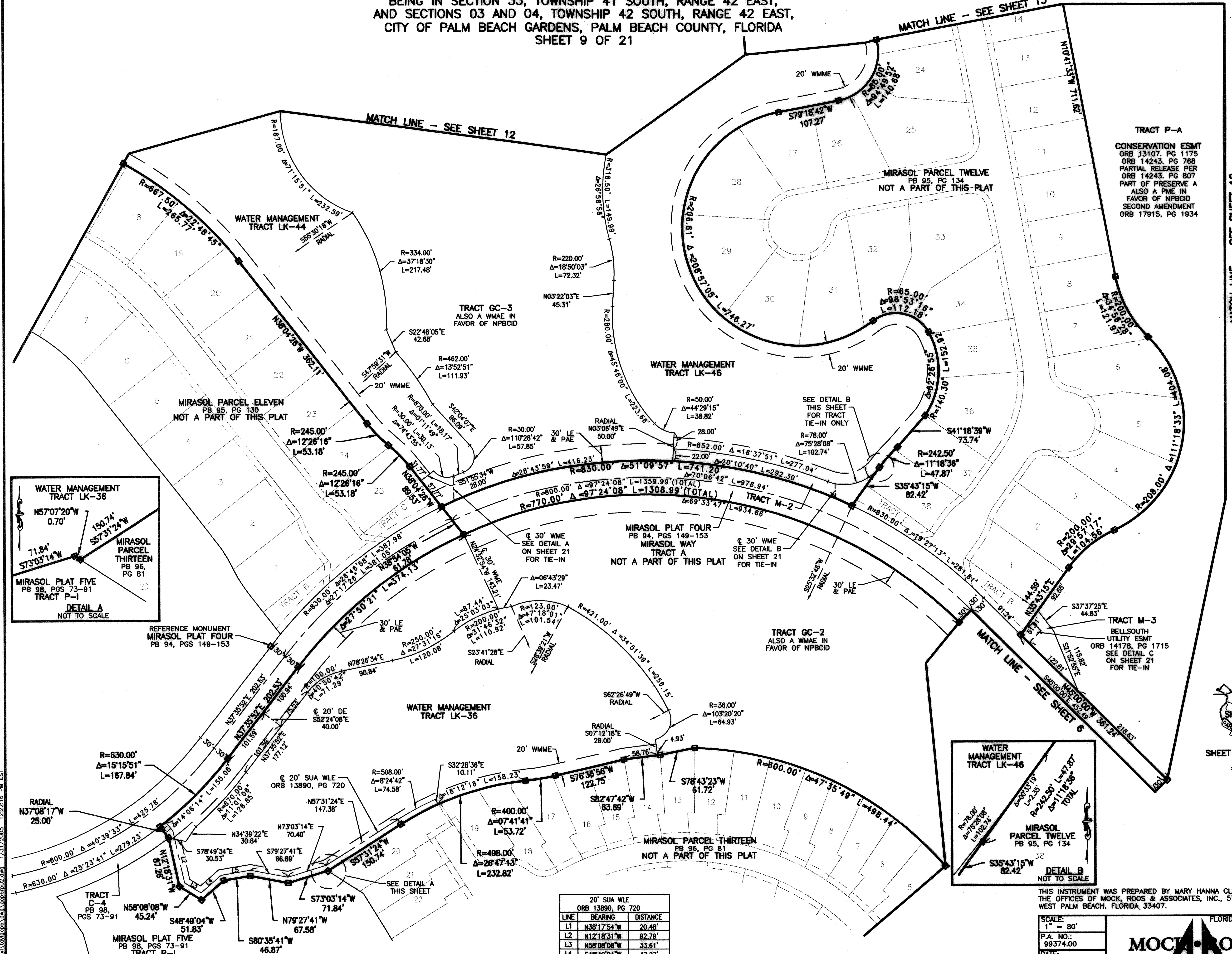
CIRCUIT COURT SEAL

LEGEND

- AE ACCESS EASEMENT
- Δ CENTRAL (DELTA) ANGLE
- CBE CART BRIDGE EASEMENT
- CH CHORD
- DE DRAINAGE EASEMENT
- ESMT EASEMENT
- IEE INGRESS/EGRESS EASEMENT
- FPL FLORIDA POWER AND LIGHT
- L ARC LENGTH
- LE LANDSCAPE EASEMENT
- MMA MIRASOL MASTER MAINTENANCE ASSOCIATION
- NPBCID NORTHERN PALM BEACH COUNTY IMPROVEMENT DISTRICT
- ORB OFFICIAL RECORD BOOK
- PBCO PALM BEACH COUNTY
- PPAE PUBLIC PEDESTRIAN ACCESS EASEMENT
- PAE PEDESTRIAN ACCESS EASEMENT
- PB PLAT BOOK
- PCD PLANNED COMMUNITY DEVELOPMENT
- PG(S) PAGE(S)
- PME PRESERVE MAINTENANCE EASEMENT
- R RADIUS
- SLE SEWER LINE EASEMENT
- SUA SEACOAST UTILITY AUTHORITY UTILITY EASEMENT
- WLE WATER LINE EASEMENT
- WMAE WATER MANAGEMENT ACCESS EASEMENT
- WME WATER MANAGEMENT EASEMENT
- WMAE WATER MANAGEMENT MAINTENANCE EASEMENT
- ◻ PERMANENT REFERENCE MONUMENT SET LB-048 (4"x4" CONCRETE)
- ◻ PERMANENT REFERENCE MONUMENT FOUND LB-048 (4"x4" CONCRETE) UNLESS OTHERWISE NOTED
- ◻ WITNESS MONUMENT SET LB-048 (4"x4" CONCRETE)



SHEET LOCATION MAP
 NOT TO SCALE



LINE	BEARING	DISTANCE
L1	N38°17'54"W	20.48'
L2	N12°18'31"W	92.79'
L3	N58°08'08"W	33.61'
L4	S48°49'04"W	47.27'
L5	S80°35'41"W	51.48'

THIS INSTRUMENT WAS PREPARED BY MARY HANNA CLODFELTER, P.S.M. IN THE OFFICES OF MOCK, ROOS & ASSOCIATES, INC., 5720 CORPORATE WAY, WEST PALM BEACH, FLORIDA, 33407.

SCALE:
 1" = 80'

DATE:
 MAY 2003

DRAWING NO.
 41-42-33-31

FLORIDA L.B. NO. 48

MOCK ROOS
 ENGINEERS & PLANNERS

5720 Corporate Way, West Palm Beach, Florida 33407
 (561) 663-3113, fax 478-7248

SHEET 9 OF 21

MIRASOL PLAT SIX
 PART OF GOLF DIGEST P.C.D.
 BEING IN SECTION 33,
 TOWNSHIP 41 SOUTH, RANGE 42 EAST,
 AND IN SECTIONS 03 AND 04,
 TOWNSHIP 42 SOUTH, RANGE 42 EAST,
 CITY OF PALM BEACH GARDENS,
 PALM BEACH COUNTY, FLORIDA

REV.: 01-31-05
 CAD FILE:
 TAT\GCP\GCP6RPO2