

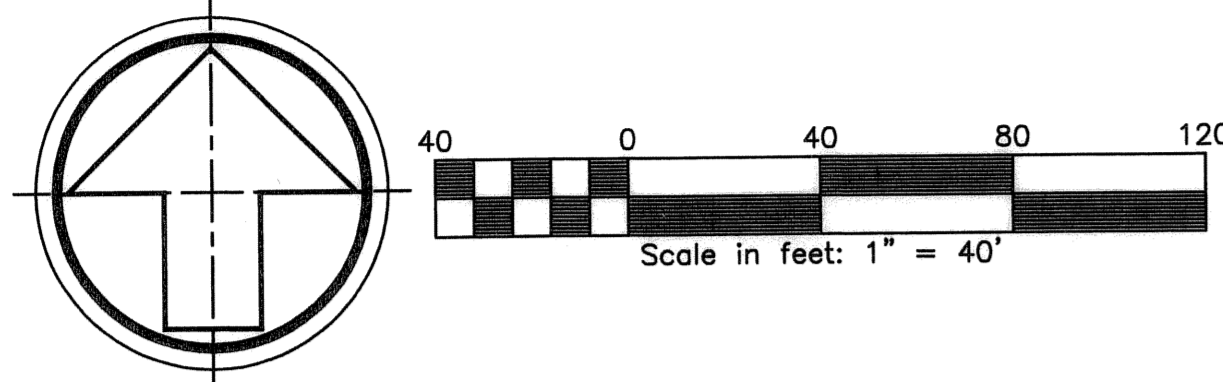
80

SDA SHAH DROTOS & ASSOCIATES ENGINEERING SURVEYING PLANNING
CERTIFICATE OF AUTHORIZATION NO. LB6456
3410 North Andrews Avenue Ext. • Pompano Beach, FL 33064
PH: 954-943-9433 • FAX: 954-783-4754
FEBRUARY, 2004

ROYAL POINCIANA

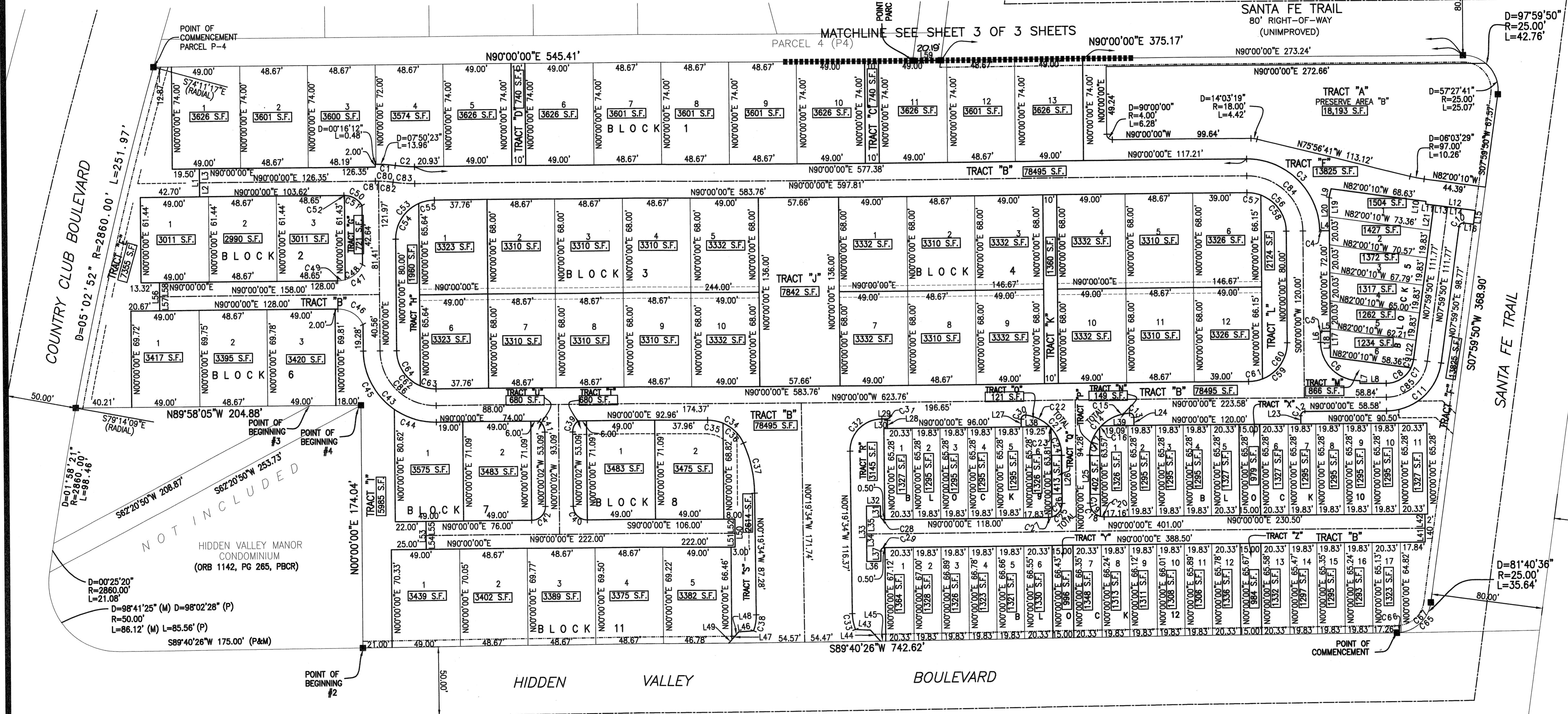
A REPLAT OF A PORTION OF TRACT I AND III, PARCEL 4(P4), HIDDEN VALLEY SECTION ONE (PB 25, PGS I13-I14, PBCR)
SECTION 32, TOWNSHIP 46 SOUTH, RANGE 43 EAST
CITY OF BOCA RATON, PALM BEACH COUNTY, FLORIDA
LINE TABLE

NORTH



NUMBER	DIRECTION	DISTANCE	NUMBER	DIRECTION	DISTANCE	NUMBER	DIRECTION	DISTANCE	NUMBER	DIRECTION	DISTANCE	NUMBER	DIRECTION	DISTANCE	NUMBER	DIRECTION	DISTANCE
L1	N00°00'00"E	20.00'	L11	S82°00'10"E	6.00'	L21	N07°59'50"E	18.33'	L31	N00°00'00"E	7.50'	L41	N00°00'00"E	10.00'	L51	N00°00'00"E	10.00'
L2	N00°00'00"E	10.00'	L12	S82°00'10"E	30.00'	L22	N07°59'50"E	14.10'	L32	N90°00'00"W	10.00'	L42	N00°00'00"E	10.00'	L52	N00°00'00"E	10.00'
L3	N00°00'00"E	10.00'	L13	S82°00'10"E	10.00'	L23	N00°00'00"E	6.00'	L33	N00°00'00"E	40.00'	L43	S82°10'20"E	8.97'	L53	N00°00'00"E	10.00'
L4	N90°00'00"E	6.08'	L14	S82°00'10"E	20.00'	L24	N00°00'00"E	5.98'	L34	N00°00'00"E	20.00'	L44	S42°16'01"E	10.70'	L54	N00°00'00"E	10.00'
L5	N90°00'00"E	6.00'	L15	S07°59'50"W	10.00'	L25	N00°00'00"E	10.00'	L35	N00°00'00"E	20.00'	L45	N89°40'26"E	3.70'	L55	N00°00'00"E	10.00'
L6	N00°00'00"E	7.83'	L16	S82°00'10"E	7.00'	L26	N00°00'00"E	34.28'	L36	N90°00'00"E	10.00'	L46	S81°35'59"W	8.97'	L56	N00°00'00"E	20.00'
L7	S00°00'00"W	2.00'	L17	N00°00'00"E	20.53'	L27	N00°00'00"E	5.70'	L37	N00°00'00"E	7.50'	L47	N41°41'40"E	10.80'	L57	N00°00'00"E	10.00'
L8	N90°00'00"E	18.84'	L18	N00°00'00"E	18.69'	L28	N00°00'00"E	6.00'	L38	N90°00'00"E	20.39'	L48	S41°41'40"W	7.46'	L58	N00°00'00"E	10.00'
L9	N14°03'19"E	6.46'	L19	N00°00'00"E	14.05'	L29	N90°00'00"W	3.82'	L39	N90°00'00"W	23.42'	L49	S41°41'40"W	3.34'	L59	N90°00'00"E	20.19'
L10	S08°02'42"W	2.00'	L20	N00°00'00"E	24.00'	L30	N90°00'00"W	2.54'	L40	N90°00'00"E	20.00'	L50	N00°00'00"E	20.00'			

STATE OF FLORIDA
COUNTY OF PALM BEACH
This Plat was filed for record at _____ M., this _____ day of _____, 2004, and duly recorded in Plat Book No. _____ on Pages _____ and _____.
SHARON BOCK, CLERK AND COMPTROLLER
BY: _____ DC



CENTERLINE CURVE TABLE

NUMBER	DELTA ANGLE	CHORD DIRECTION	RADIUS	ARC LENGTH	CHORD LENGTH
C80	08°06'35"	S85°56'43"E	90.00	12.74	12.73
C81	01°26'37"	S89°16'41"E	90.00	2.27	2.27
C82	06°39'57"	S85°13'24"E	90.00	10.47	10.46
C83	08°06'35"	S85°56'43"E	110.00	15.57	15.56
C84	90°00'00"	S45°00'00"E	40.00	62.83	56.57
C85	82°00'10"	N48°59'55"E	30.00	42.94	39.36
C86	90°00'00"	N45°00'00"W	40.00	62.83	56.57

CURVE TABLE

NUMBER	DELTA ANGLE	RADIUS	ARC LENGTH	NUMBER	DELTA ANGLE	RADIUS	ARC LENGTH	NUMBER	DELTA ANGLE	RADIUS	ARC LENGTH	NUMBER	DELTA ANGLE	RADIUS	ARC LENGTH
C1	08°06'35"	102.00	14.44	C15	43°27'03"	30.00	22.75	C29	90°00'00"	2.50	3.93	C43	90°00'00"	52.00	81.68
C2	08°06'35"	98.00	13.87	C16	03°30'03"	30.00	1.83	C30	98°36'10"	3.00	5.16	C44	35°14'01"	52.00	31.98
C3	89°50'33"	52.00	81.54	C17	40°55'34"	30.00	21.43	C31	19°28'16"	3.00	1.02	C45	54°45'59"	52.00	49.70
C4	17°45'45"	3.00	0.93	C18	90°00'00"	10.00	15.71	C32	90°19'34"	23.00	36.26	C46	64°09'29"	20.00	22.40
C5	19°28'16"	3.00	1.02	C19	74°32'02"	10.00	13.01	C33	20°24'21"	33.00	11.75	C47	64°09'29"	20.00	22.40
C6	90°00'00"	28.00	43.98	C20	15°27'58"	10.00	2.70	C34	66°11'13"	28.00	32.34	C48	48°39'25"	20.00	16.98
C7	82°00'10"	20.00	28.62	C21	81°23'50"	30.00	42.62	C35	23°13'05"	28.00	11.35	C49	15°30'04"	20.00	5.41
C8	63°51'16"	20.00	22.29	C22	36°58'13"	30.00	19.36	C36	42°58'07"	28.00	21.00	C50	60°04'25"	15.00	15.73
C9	18°08'54"	20.00	6.33	C23	03°01'03"	30.00	1.58	C37	23°29'13"	90.00	36.89	C51	58°45'15"	15.00	15.38
C10	90°00'00"	3.00	4.71	C24	41°24'35"	30.00	21.68	C38	20°29'08"	33.00	11.80	C52	01°19'07"	15.00	0.35
C11	82°00'10"	40.00	57.25	C25	90°00'00"	10.00	15.71	C39	53°07'50"	10.00	9.27	C53	90°00'00"	28.00	43.98
C12	90°00'00"	3.00	4.71	C26	75°31'21"	10.00	13.18	C40	89°59'58"	10.00	15.71	C54	66°19'57"	28.00	32.42
C13	92°07'20"	3.00	4.82	C27	14°28'39"	10.00	2.53	C41	53°07'47"	10.00	9.27	C55	23°40'03"	28.00	11.57
C14	87°52'40"	30.00	46.01	C28	90°00'00"	2.50	3.93	C42	90°00'01"	10.00	15.71	C56	90°00'00"	28.00	43.98

NOTE:
SEE SHEET 3 OF 3 SHEETS FOR CLARIFICATION OF EASEMENTS AND DIMENSIONING OF EASEMENTS
SURVEYOR'S PROJECT NO. 03-0644