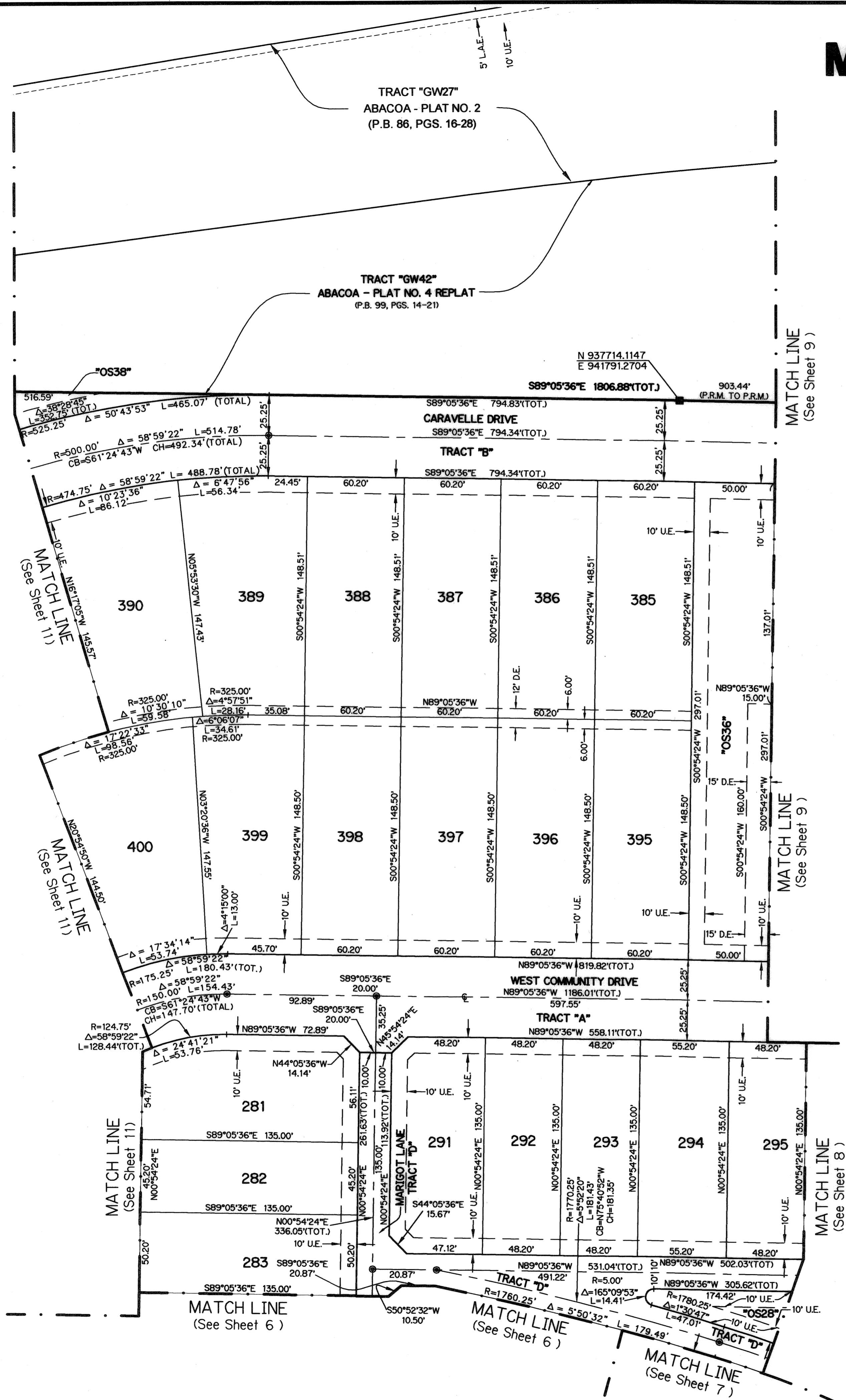


# MARTINIQUE AT ABACOA - PLAT TWO

BEING A REPLAT OF TRACT "D" ACCORDING TO MARTINIQUE AT ABACOA - PLAT ONE AS RECORDED IN PLAT BOOK 103, PAGES 47 THROUGH 56, OF THE PUBLIC RECORDS OF PALM BEACH COUNTY, FLORIDA, LYING IN SECTION 14, TOWNSHIP 41 SOUTH, RANGE 42 EAST, TOWN OF JUPITER, PALM BEACH COUNTY, FLORIDA

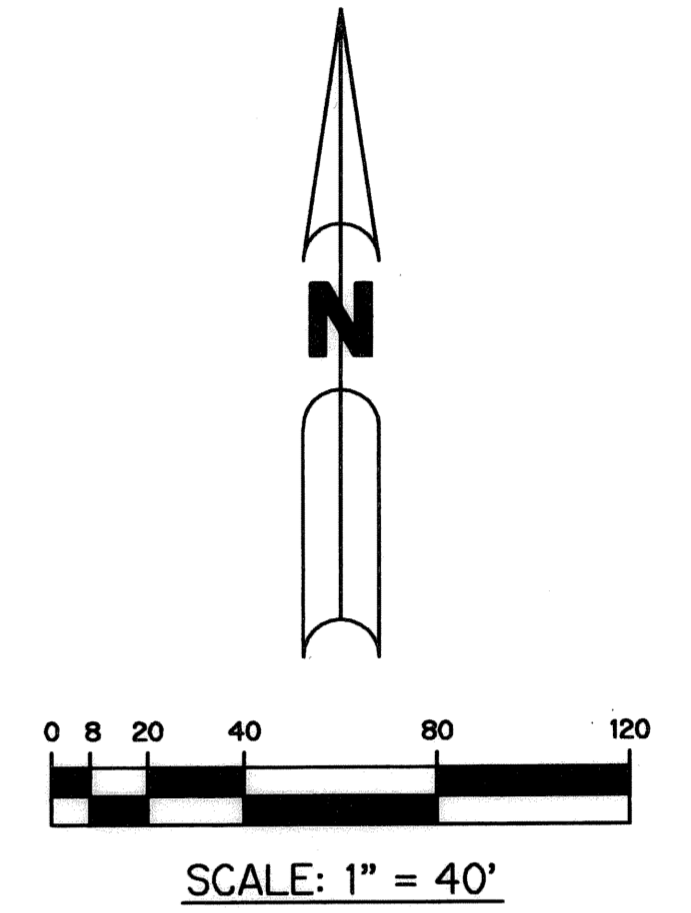
SHEET 10 OF 11 SEPTEMBER, 2004

75



### LEGEND:

- P.R.M. - PERMANENT REFERENCE MONUMENT
- - SET PERMANENT CONTROL POINT, LB #6674
- - SET PARKER KALON NAIL AND P.R.M. DISK LB #6674
- - SET PERMANENT REFERENCE MONUMENT, LB #6674
- - FOUND P.R.M. #26
- Δ - DELTA ANGLE
- P.I. - POINT OF INTERSECTION
- ⊕ - CENTERLINE
- D.B. - DEED BOOK
- D.E. - DRAINAGE EASEMENT
- L - ARC LENGTH
- L.A.E. - LIMITED ACCESS EASEMENT
- L.S.E. - LIFT STATION EASEMENT
- P.A.E. - PEDESTRIAN ACCESS EASEMENT
- N.T.S. - NOT TO SCALE
- O.R.B. - OFFICIAL RECORD BOOK
- P.B. - PLAT BOOK
- PGS. - PAGES
- R - RADIUS
- S.E. - SIDEWALK EASEMENT
- U.E. - UTILITY EASEMENT
- NPBCID - NORTHERN PALM BEACH COUNTY IMPROVEMENT DISTRICT
- P.D.E. - PUBLIC DRAINAGE EASEMENT
- (RAD) - RADIAL
- CB - CHORD BEARING
- CH - CHORD DISTANCE
- S.S.E. - SAFE SIGHT EASEMENT
- W.M.A.E. - WATER MANAGEMENT ACCESS EASEMENT
- S.T. - SURVEY TIE
- (N.R.) - NON-RADIAL
- (R.F.) - RADIAL TO FRONT LOT LINE
- (R.R.) - RADIAL TO REAR LOT LINE
- I.E.E. - INGRESS AND EGRESS EASEMENT
- (TOT) - TOTAL
- N 931379.1119  
E 785294.7754 - DENOTES STATE PLANE COORDINATES



### NOTE:

COORDINATES SHOWN ARE GRID COORDINATES  
 DATUM = NAD 83 (1990 ADJUSTMENT)  
 ZONE = FLORIDA EAST ZONE  
 LINEAR UNIT = U.S. SURVEY FEET  
 COORDINATE SYSTEM 1983 STATE PLANE  
 TRANSVERSE MERCATOR PROJECTION  
 ALL DISTANCES ARE GROUND  
 SCALE FACTOR = 1.0000077  
 S 02°12'00" W (PLAT BEARING)  
 S 02°12'02" W (GRID BEARING)  
 00°00'02" = COUNTERCLOCKWISE  
 BEARING ROTATION, PLAT TO GRID

THIS INSTRUMENT PREPARED BY  
 DAVID L. SMITH, P.S.M. LS-4951, STATE OF FLORIDA  
 LAWSON, NOBLE AND WEBB, INC.  
 ENGINEERS PLANNERS SURVEYORS  
 420 COLUMBIA DRIVE, SUITE 110  
 WEST PALM BEACH, FLORIDA 33409  
 LB 6674

