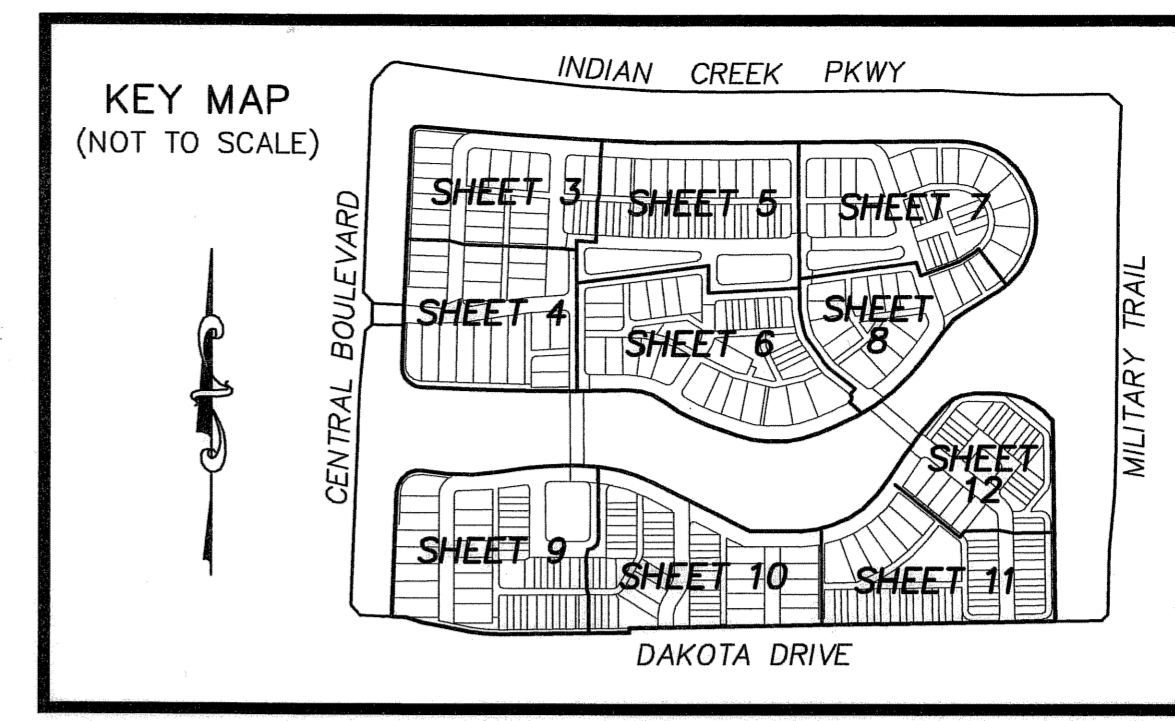


# CANTERBURY PLACE

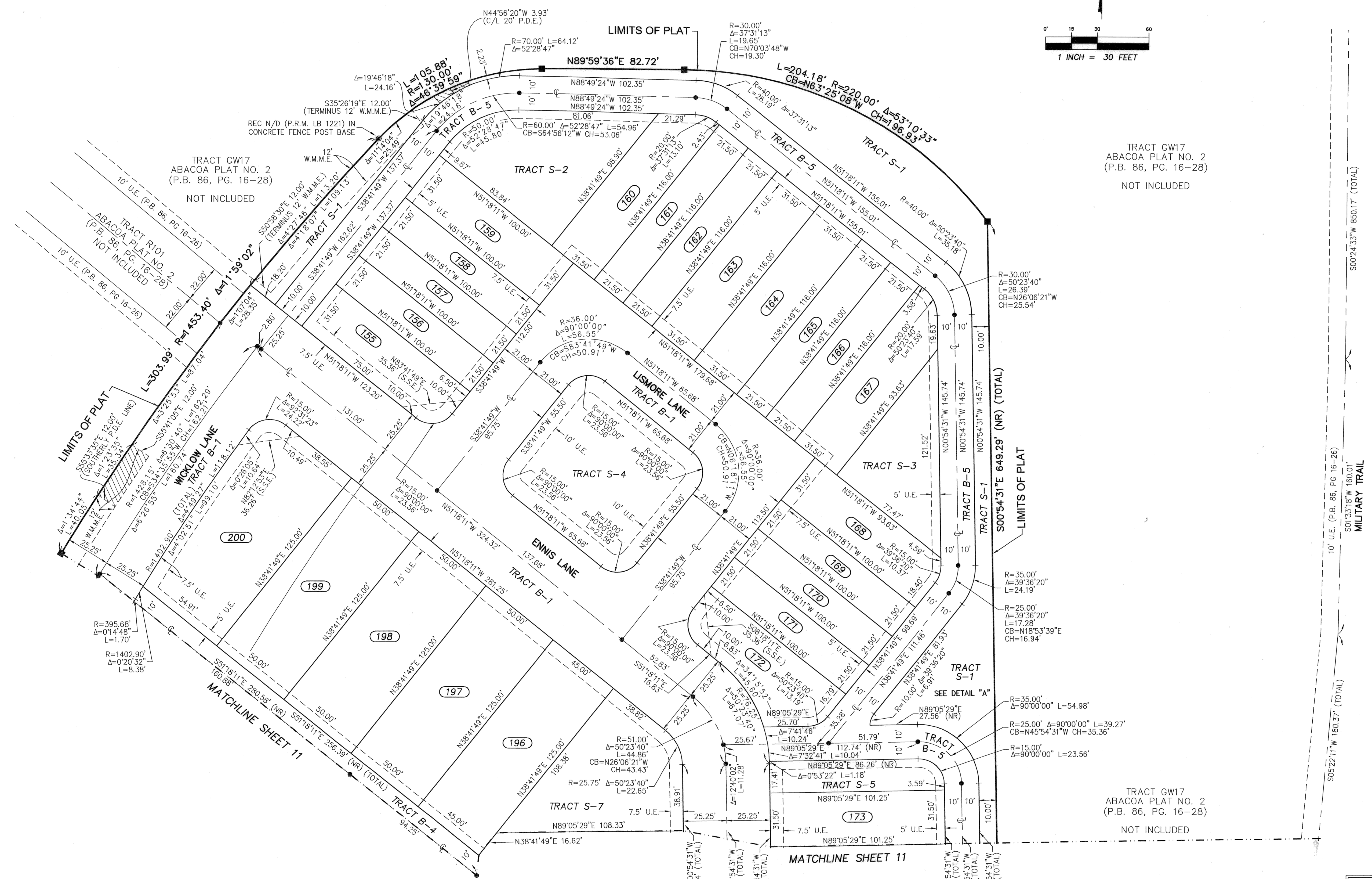
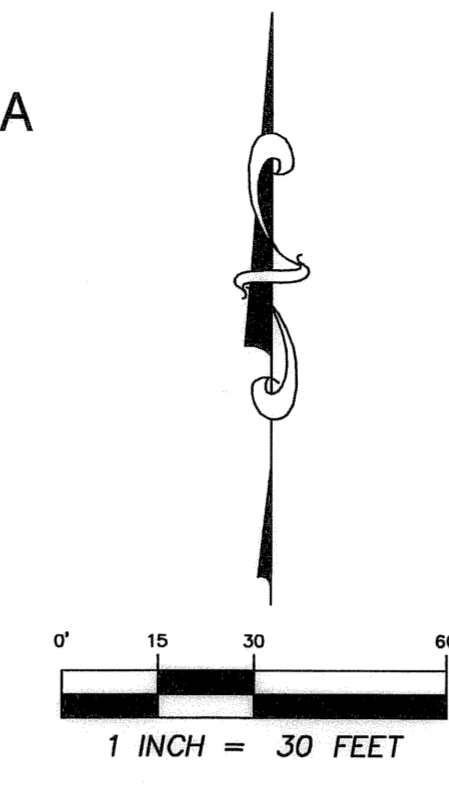
BEING A REPLAT OF TRACTS RN5N AND RN5S, ABACOA PLAT NO. 2, AS RECORDED IN PLAT BOOK 86, PAGES 16 THROUGH 28, OF THE PUBLIC RECORDS OF PALM BEACH COUNTY, FLORIDA LYING IN SECTION 13, TOWNSHIP 41 SOUTH, RANGE 42 EAST TOWN OF JUPITER, PALM BEACH COUNTY, FLORIDA

JANUARY 2005

SHEET 12 OF 12

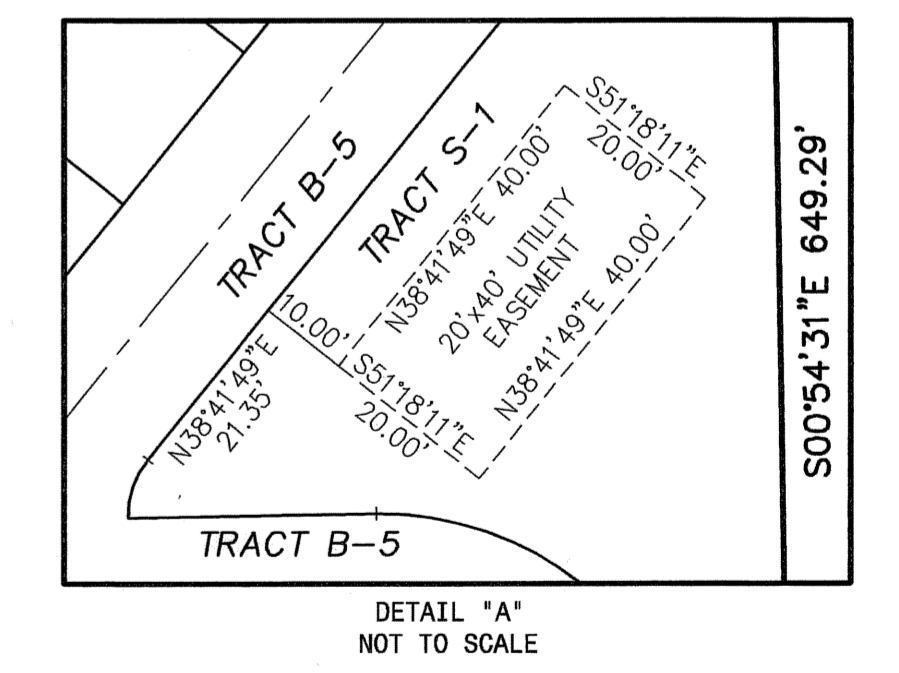


65



**LEGEND & ABBREVIATIONS**

- (R) RADIAL
- (NR) NOT-RADIAL
- C CENTERLINE
- R RADIUS
- L ARC LENGTH
- Δ DELTA (CENTRAL ANGLE)
- CB CHORD BEARING
- CH CHORD LENGTH
- LB CERTIFICATE OF AUTHORIZATION NUMBER
- P.S.M. PROFESSIONAL SURVEYOR & MAPPER
- P.B. PLAT BOOK
- O.R.B. OFFICIAL RECORD BOOK
- PG. PAGE
- REC RECOVERED / FOUND
- U.E. UTILITY EASEMENT
- D.E. DRAINAGE EASEMENT
- P.D.E. PUBLIC DRAINAGE EASEMENT
- HATCHED THUS:
- L.A.E. LIMITED ACCESS EASEMENT
- P.S.E. PUBLIC SIDEWALK EASEMENT
- P.A.E. PEDESTRIAN ACCESS EASEMENT
- S.S.E. SAFE SIGHT EASEMENT
- W.M.M.E. WATER MANAGEMENT MAINTENANCE EASEMENT
- P.R.M. PERMANENT REFERENCE MONUMENT
  - 4"x4" CONCRETE MONUMENT WITH NAIL & DISK STAMPED "P.R.M. LB 1221"
  - ⊙ NAIL & DISK STAMPED "P.R.M. LB 1221"
- P.C.P. PERMANENT CONTROL POINT
  - NAIL & DISK STAMPED "P.C.P. LB 1221"



TRACT GW17  
ABACOA PLAT NO. 2  
(P.B. 86, PG. 16-28)  
NOT INCLUDED

TRACT GW17  
ABACOA PLAT NO. 2  
(P.B. 86, PG. 16-28)  
NOT INCLUDED

THIS INSTRUMENT PREPARED BY WILLIAM D. DONLEY,  
FLORIDA LICENSED SURVEYOR & MAPPER NO. 5381  
BOWYER-SINGLETON AND ASSOCIATES, INC.  
901 NORTHPOINT PARKWAY, SUITE 204  
WEST PALM BEACH, FLORIDA 33407  
CERTIFICATE OF AUTHORIZATION NO. LB 1221

**BOWYER-SINGLETON & ASSOCIATES, INCORPORATED**  
ENGINEERING • PLANNING • SURVEYING • ENVIRONMENTAL  
901 NORTHPOINT PARKWAY, SUITE 204 WEST PALM BEACH, FL 33407  
561-683-7101 • FAX 561-683-7102 • L.B. NO. 1221