

# PERIMETER

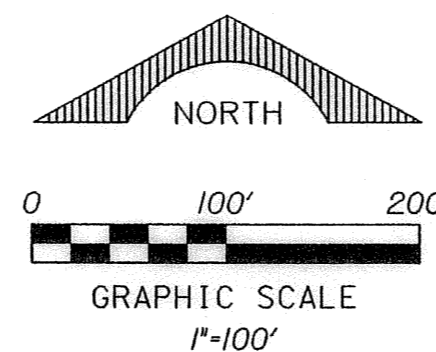
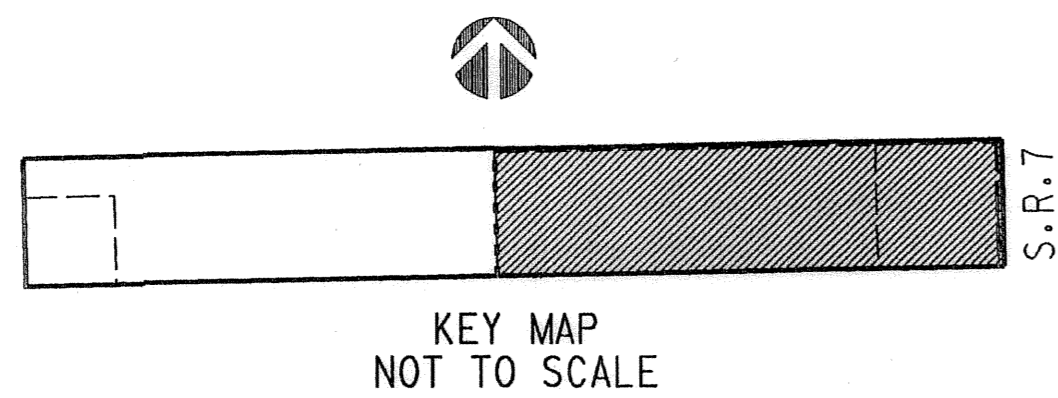
**SURVEYING & MAPPING**  
 Certificate of Authorization No. LB7264  
 Prepared by: Jeff S. Hodapp, P.S.M.  
 951 Broken Sound Parkway, Suite 320  
 Boca Raton, Florida 33487  
 Tel: (561) 241-9988  
 Fax: (561) 241-5182

## YEE PLAT

PETITION NO. 2003-035 (COUNTRYSIDE MEADOWS AGR-PDD)  
 A PORTION OF THE SOUTH ONE-HALF OF SECTION 13, TOWNSHIP 45  
 SOUTH, RANGE 41, EAST, PALM BEACH COUNTY, FLORIDA.  
 OCTOBER, 2004

# 51

### SHEET 3 OF 3

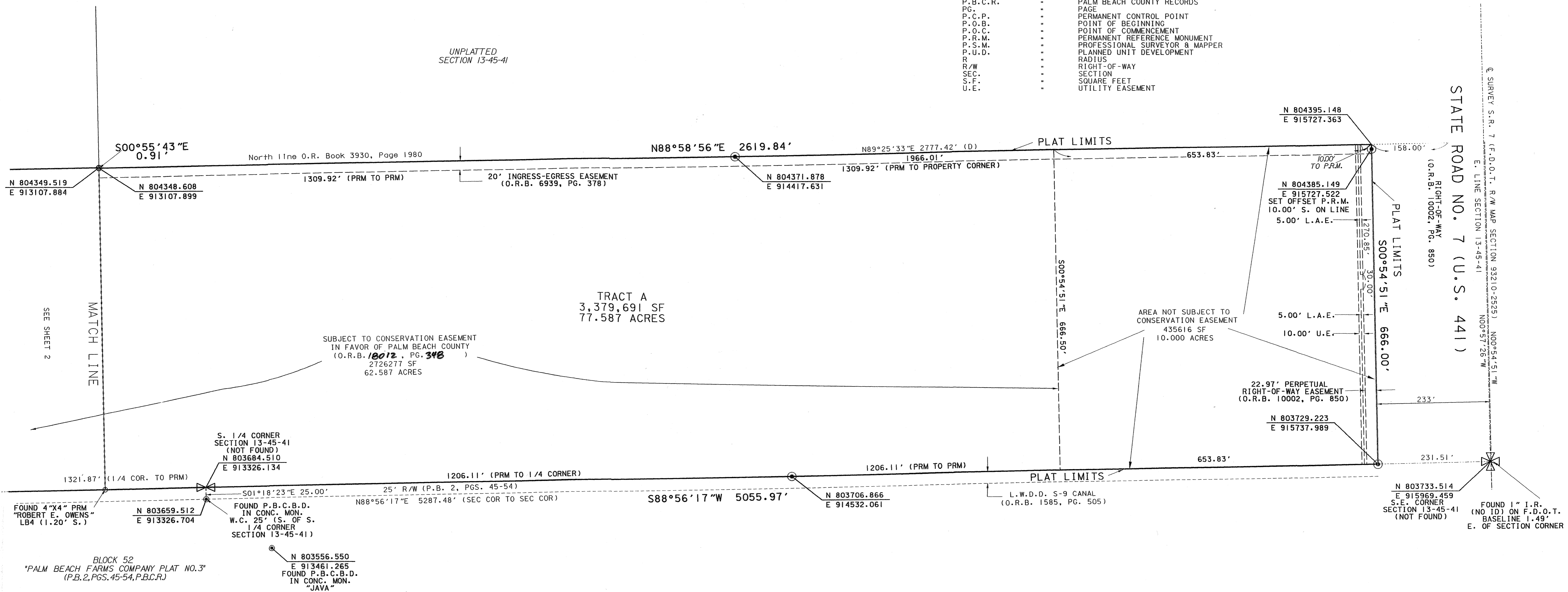


#### LEGEND:

- ⊙ SET P.R.M. (UNLESS OTHERWISE NOTED) 4" X4" CONC. MON. WITH ALUMINUM DISK STAMPED P.R.M. •LB7264
- P.C.P.
- ⊖ CENTERLINE

#### ABBREVIATIONS:

- CONC. CONCRETE
- COR. CORNER
- D DELTA (CENTRAL ANGLE)
- D.E. DRAINAGE EASEMENT
- L ARCLength
- L.A.E. LIMITED ACCESS EASEMENT
- L.B. LICENSED BUSINESS
- L.E. LANDSCAPE EASEMENT
- L.S. LICENSED SURVEYOR
- L.W.D.D. LAKE WORTH DRAINAGE DISTRICT
- MON. MONUMENT
- O.R.B. OFFICIAL RECORDS BOOK
- N.R. NON-RADIAL
- P.B. PLAT BOOK
- P.B.C.R. PALM BEACH COUNTY RECORDS
- PG. PAGE
- P.C.P. PERMANENT CONTROL POINT
- P.O.B. POINT OF BEGINNING
- P.O.C. POINT OF COMMENCEMENT
- P.R.M. PERMANENT REFERENCE MONUMENT
- P.S.M. PROFESSIONAL SURVEYOR & MAPPER
- P.U.D. PLANNED UNIT DEVELOPMENT
- R RADIUS
- R/W RIGHT-OF-WAY
- SEC. SECTION
- S.F. SQUARE FEET
- U.E. UTILITY EASEMENT



SUBDIVISION YEE PLAT  
 BOOK 04  
 FLOOD ZONE B  
 QUAD # 04  
 SE  
 TAZ 742  
 PUD NAME

BLOCK 52  
 "PALM BEACH FARMS COMPANY PLAT NO. 3"  
 (P.B. 2, PGS. 45-54, P.B.C.R.)

N 803556.550  
 E 913461.265  
 FOUND P.B.C.B.D.  
 IN CONC. MON.  
 "JAVA"

PAGE 51  
 FLOOD MAP # 10015  
 ZONING AGR  
 ZIP CODE 33437