

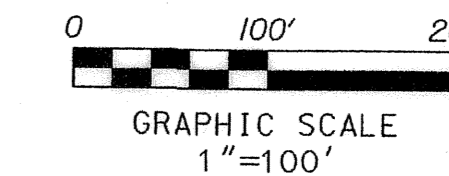
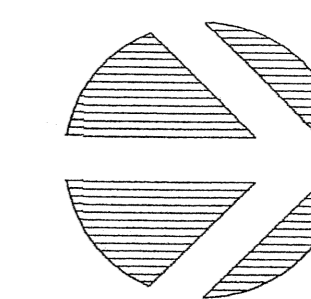
PERIMETER

SURVEYING & MAPPING
Certificate of Authorization No. LB7264
Prepared by: Jeff S. Hodapp, P.S.M.
951 Broken Sound Parkway, Suite 320
Boca Raton, Florida 33487
Tel: (561) 241-9988
Fax: (561) 241-5182

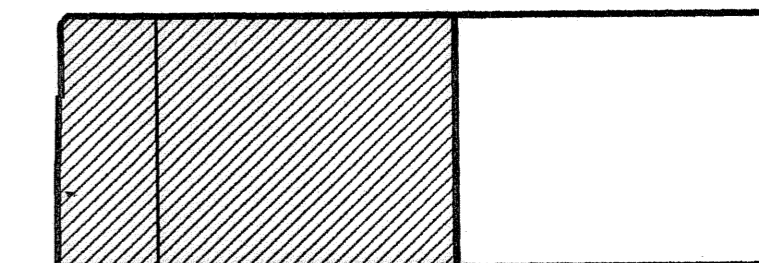
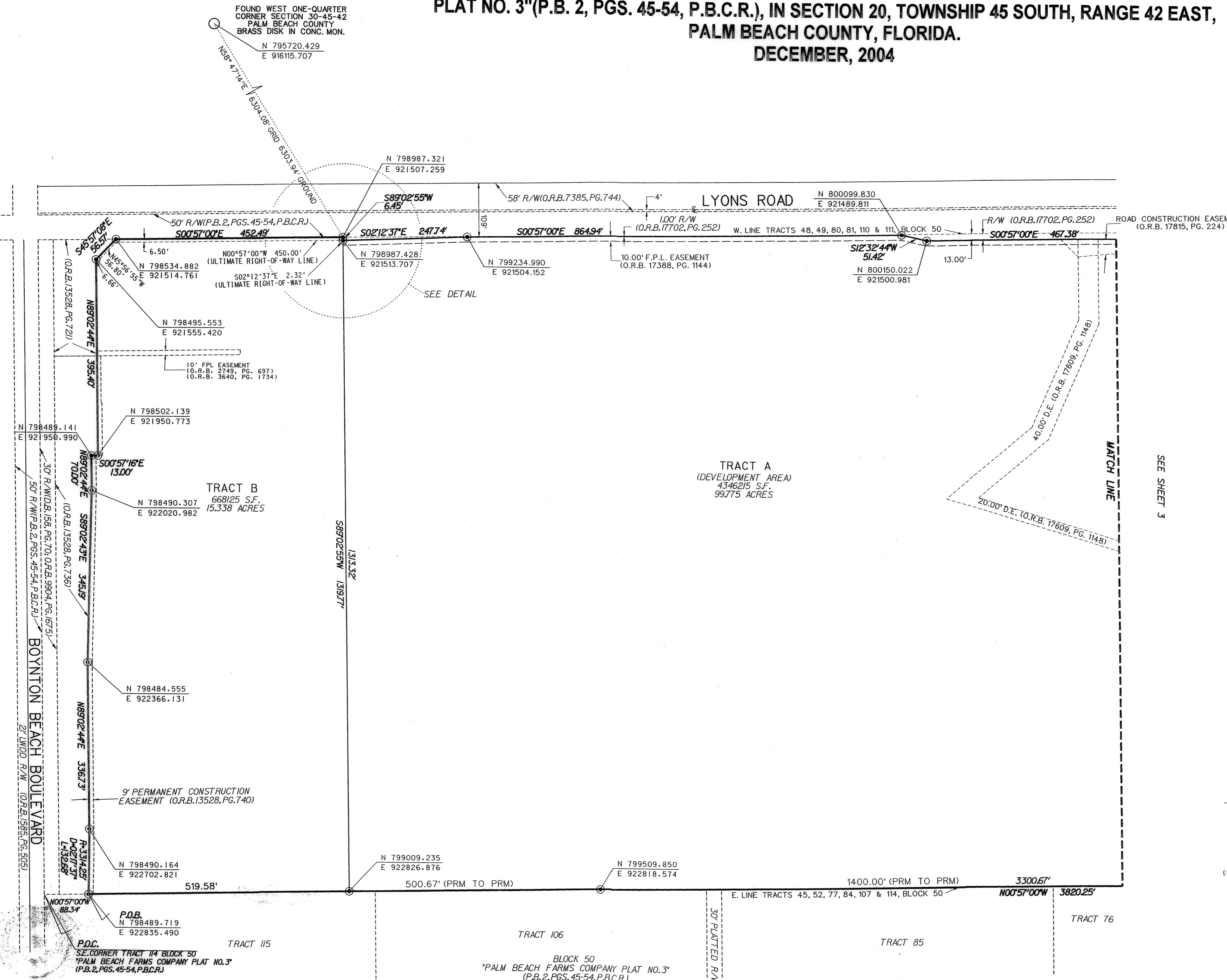
WEST BOYNTON FARMS

PETITION NUMBER DRO 04-034 (WEST BOYNTON FARMS SUBDIVISION PLAN)
A REPLAT OF ALL OF TRACTS 50, 51, 52, 77, 78, 79, 82, 83, 84, 107, 108, 109, TOGETHER WITH
PORTIONS OF TRACTS 45-49, 80, 81 AND 110-114, AND THE PLATTED 30.00 FOOT WIDE
RIGHTS-OF-WAY ADJACENT THERETO, ALL OF BLOCK 50 "PALM BEACH FARMS COMPANY
PLAT NO. 3"(P.B. 2, PGS. 45-54, P.B.C.R.), IN SECTION 20, TOWNSHIP 45 SOUTH, RANGE 42 EAST,
PALM BEACH COUNTY, FLORIDA.
DECEMBER, 2004

Pg. 10



SHEET 2 OF 3



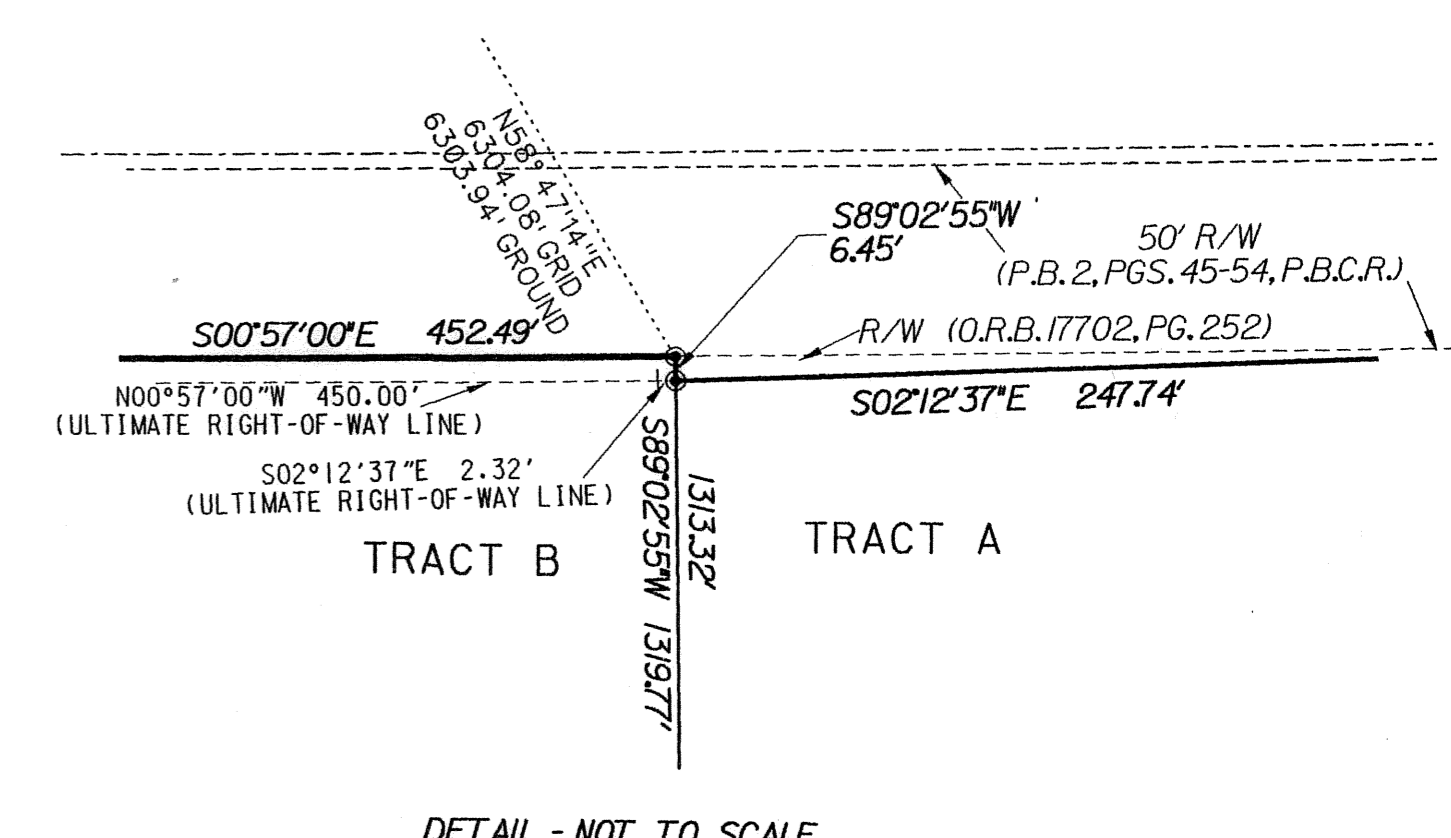
KEY MAP:
NOT TO SCALE

LEGEND:

- ⊙ SET P.R.M. (UNLESS OTHERWISE NOTED) - 4" X 4" CONC. MON. WITH ALUMINUM DISK STAMPED P.R.M. •LB7264
- P.C.P. CENTERLINE

ABBREVIATIONS:

- CH CHORD
- CHB CHORD BEARING
- CONC. CONCRETE
- COR. CORNER
- D DELTA (CENTRAL ANGLE)
- D.E. DRAINAGE EASEMENT
- L ARCLength
- L.B. LICENSED BUSINESS
- L.E. LANDSCAPE EASEMENT
- L.M.E. LAKE MAINTENANCE EASEMENT
- L.M.A.E. LAKE MAINTENANCE ACCESS EASEMENT
- L.S. LICENSED SURVEYOR
- L.W.D.D. LAKE WORTH DRAINAGE DISTRICT
- MON. MONUMENT
- O.R.B. OFFICIAL RECORDS BOOK
- N.R. NON-RADIAL
- P.B. PLAT BOOK
- P.B.C.R. PALM BEACH COUNTY RECORDS
- PG. PAGE
- P.C.P. PERMANENT CONTROL POINT
- P.O.B. POINT OF BEGINNING
- P.O.C. POINT OF COMMENCEMENT
- P.R.M. PERMANENT REFERENCE MONUMENT
- P.S.M. PROFESSIONAL SURVEYOR & MAPPER
- P.U.D. PLANNED UNIT DEVELOPMENT
- R RADIUS
- R.E.E. ROOF ENCROACHMENT EASEMENT
- R/W RIGHT-OF-WAY
- SEC. SECTION
- S.F. SQUARE FEET
- U.E. UTILITY EASEMENT



SUBDIVISION WEST Boynton Farms
BOOK 104-
FLOOD ZONE B
QUAD # 50
SE
TAZ 745
PUB NAME

PAGE 010
FLOOD MAP # 195 A
ZONING PPD
ZIP CODE 33447

P.O.C.
S.E. CORNER TRACT 114 BLOCK 50
"PALM BEACH FARMS COMPANY PLAT NO. 3"
(P.B. 2, PGS. 45-54, P.B.C.R.)

BLOCK 50
"PALM BEACH FARMS COMPANY PLAT NO. 3"
(P.B. 2, PGS. 45-54, P.B.C.R.)

SEE SHEET 3