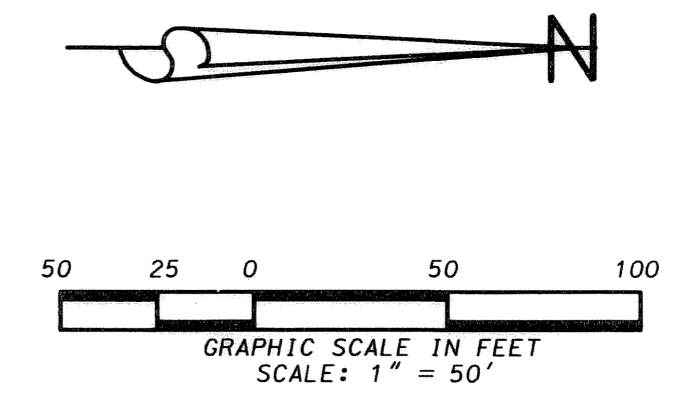
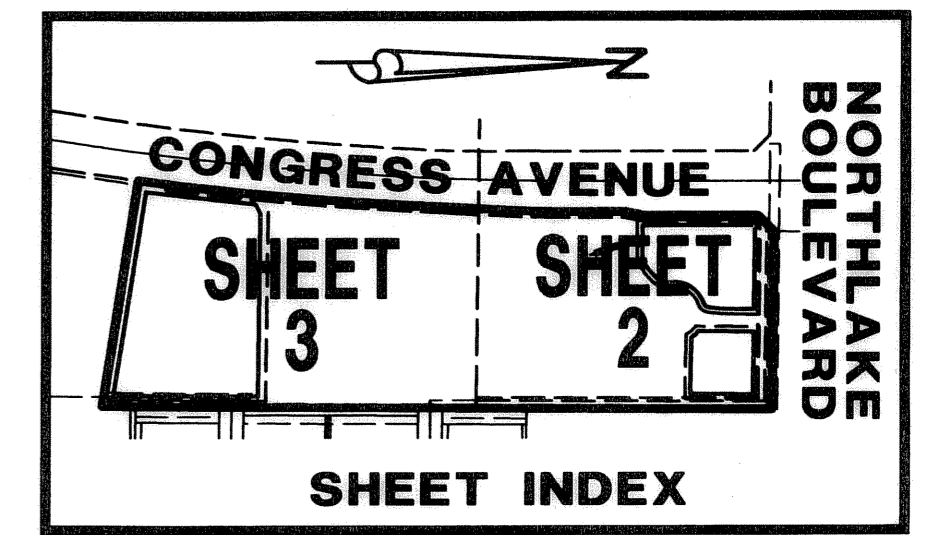


# NORTHLAKE SQUARE EAST

SITUATE IN SECTION 19, TOWNSHIP 42 SOUTH, RANGE 43 EAST  
CITY OF PALM BEACH GARDENS AND THE TOWN OF LAKE PARK,  
PALM BEACH COUNTY, FLORIDA  
NOVEMBER 2004 SHEET 2 OF 4



NORTH QUARTER CORNER OF SECTION 19, TOWNSHIP 42 SOUTH, RANGE 43 EAST FND. PALM BEACH COUNTY BRASS DISK

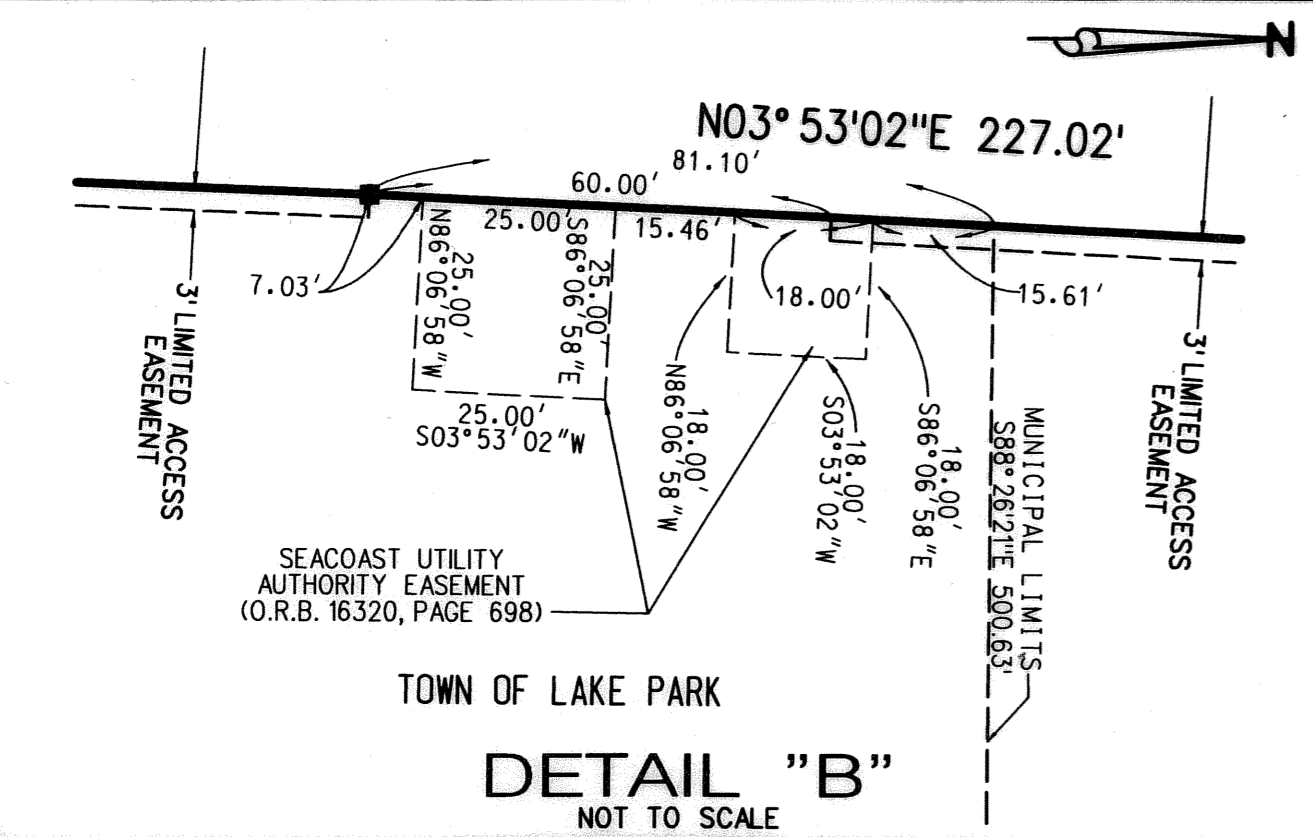


### AREA TABULATION

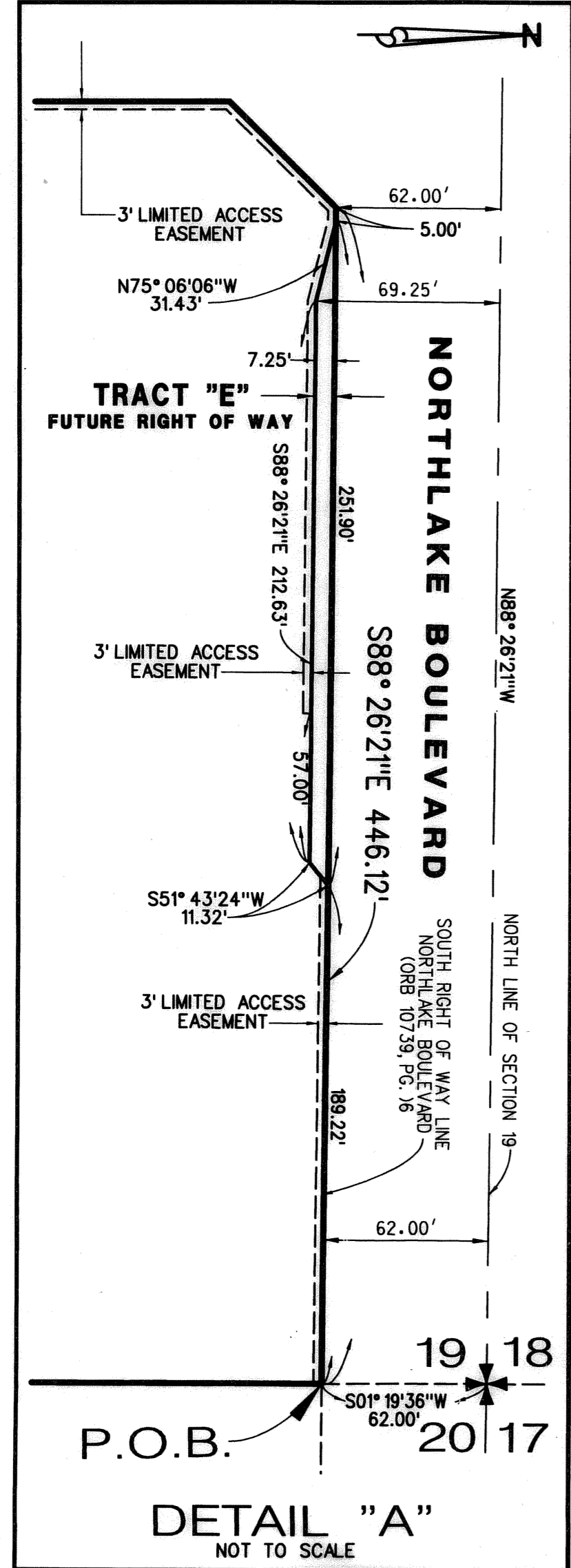
DESCRIPTION	ACREAGE
TRACT "A"	14.121
TRACT "B"	1.086
TRACT "C"	0.545
TRACT "D"	3.329
TRACT "E"	0.039
TOTAL	19.120

### ABBREVIATIONS

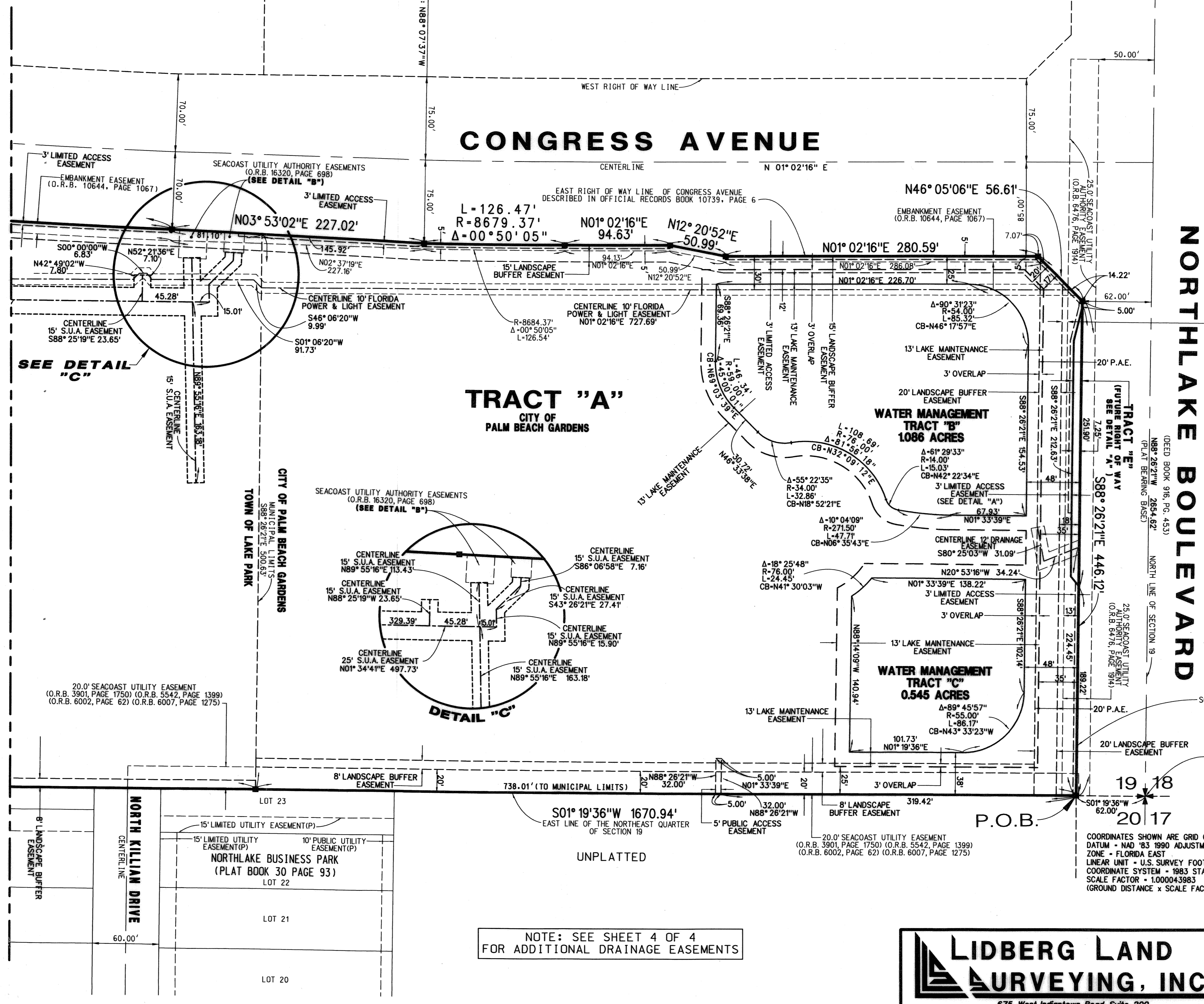
- POC = POINT OF COMMENCEMENT
- POB = POINT OF BEGINNING
- PC = POINT OF CURVE
- PT = POINT OF TANGENT
- NR = NON RADIAL
- C/L = CENTER LINE
- R = RADIUS
- L = ARC LENGTH
- Δ = DELTA
- S.U.A. = SEACOAST UTILITY AUTHORITY
- L.A.E. = LIMITED ACCESS EASEMENT
- F.P.L. = FLORIDA POWER & LIGHT COMPANY
- PRM = PERMANENT REFERENCE MONUMENT
- LB = LICENSED BUSINESS
- DOT = DEPARTMENT OF TRANSPORTATION
- LAE = LIMITED ACCESS EASEMENT
- DE = DRAINAGE EASEMENT
- UE = UTILITY EASEMENT
- ORB = OFFICIAL RECORD BOOK
- PB = PLAT BOOK
- PG. = PAGE
- TYP. = TYPICAL
- P.A.E. = PUBLIC ACCESS EASEMENT



DETAIL "B"  
NOT TO SCALE



DETAIL "A"  
NOT TO SCALE



NOTE: SEE SHEET 4 OF 4 FOR ADDITIONAL DRAINAGE EASEMENTS

**LIDBERG LAND SURVEYING, INC.**  
LB4431 675 West Indiantown Road, Suite 200, Jupiter, Florida 33458 TEL. 561-746-8454

CAD. K:\UST\194243\1670306\SHEET2.DGN		JOB 00-167-306	
REF. K:\AUTOCAD2000\194243\00-167\1670104.DWG		DATE NOV. 2004	
FLD. -	FB. PG.	DWG. D00-167P	
OFF. CASASUS	SHEET 2 OF 4		
CKD. D.C.L.			