

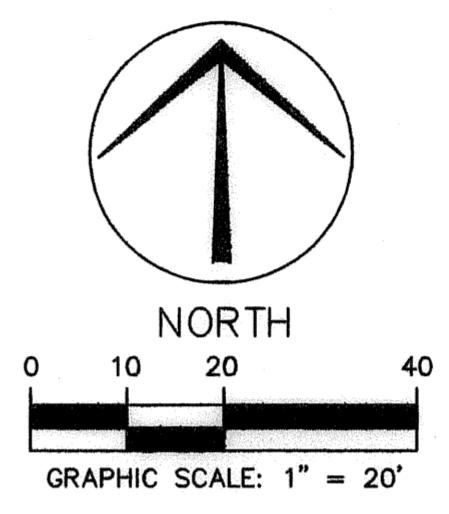
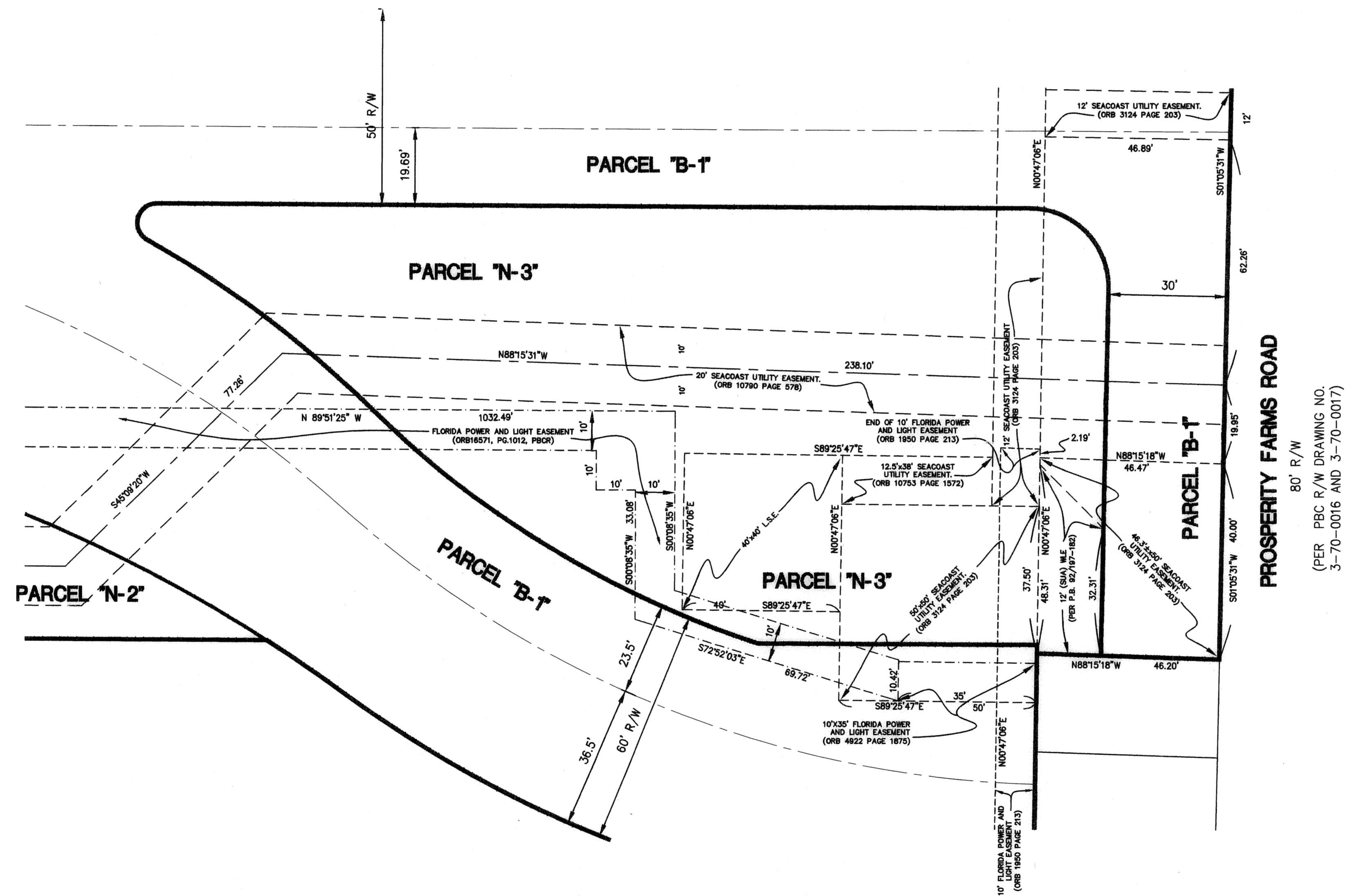
GRANDE AT PALM BEACH GARDENS - PLAT NO. 2

A PARCEL OF LAND LYING AND BEING WITHIN A PORTION OF SECTION 5, TOWNSHIP 42 SOUTH, RANGE 43 EAST,
 ALSO BEING A REPLAT OF ALL OF PARCEL "P" AND A PORTION PARCELS "B" AND "N"
 OF THE GRANDE AT PALM BEACH GARDENS, PLAT BOOK 92, PAGES 179-182
 CITY OF PALM BEACH GARDENS, PALM BEACH COUNTY, FLORIDA

72

STATE OF FLORIDA
 COUNTY OF PALM BEACH
 THIS PLAT WAS FILED FOR RECORD AT _____
 THIS _____ DAY OF _____, 2004
 AND DULY RECORDED IN PLAT BOOK NO. _____
 ON PAGES _____
 DOROTHY H. WILKEN,
 CLERK OF THE CIRCUIT COURT
 BY _____
 DEPUTY CLERK

SHEET 4 OF 4



DETAIL OF EASEMENTS WITHIN PARCEL "N-3"

- LEGEND**
- - PERMANENT REFERENCE MONUMENT
 - PCP ● - PERMANENT CONTROL POINT
 - R - RADIUS
 - L - LENGTH
 - Δ - DELTA
 - ⊙ - CENTERLINE
 - D.E. - DRAINAGE EASEMENT
 - L.M.E. - LAKE MAINTENANCE EASEMENT
 - R.O.E. - ROOF OVERHANG EASEMENT
 - U.E. - UTILITY EASEMENT
 - L.E. - LANDSCAPE EASEMENT
 - SUA - SEACOAST UTILITY AUTHORITY
 - OS - OPEN SPACE TRACT
 - WSE - WATER AND SEWER EASEMENT
 - WME - WATER MANAGEMENT EASEMENT
 - WLE - WATER LINE EASEMENT
 - PRC ● - POINT OF REVERSE CURVATURE
 - PT ● - POINT OF TANGENCY
 - POB - POINT OF BEGINNING
 - L.S.E. - LIFT STATION EASEMENT

THIS INSTRUMENT WAS PREPARED BY:
 BRENT A. SPENCER, P.S.M. #6388 OF
CRAVEN THOMPSON & ASSOCIATES, INC.
 ENGINEERS • PLANNERS • SURVEYORS
 5114 OKEECHOBEE BOULEVARD, SUITE 112, WEST PALM BEACH, FLORIDA 33417
 TEL.: (561) 688-5010 FAX: (561) 688-1037
 3563 N.W. 53RD STREET FORT LAUDERDALE, FLORIDA 33309
 TEL.: (954) 739-6400 FAX: (954) 739-6409
 FLORIDA LICENSED ENGINEERING, SURVEYING & MAPPING BUSINESS No. 271
 FLORIDA LICENSED LANDSCAPE ARCHITECTURE BUSINESS No. C000114