

THIS INSTRUMENT PREPARED BY  
 DAVID P. LINDLEY  
 OF  
**CAULFIELD and WHEELER, INC.**  
 SURVEYORS - ENGINEERS - PLANNERS  
 7301-A WEST PALMETTO PARK ROAD, SUITE 100A  
 BOCA RATON, FLORIDA 33433 - (561)392-1991  
 JUNE - 2003

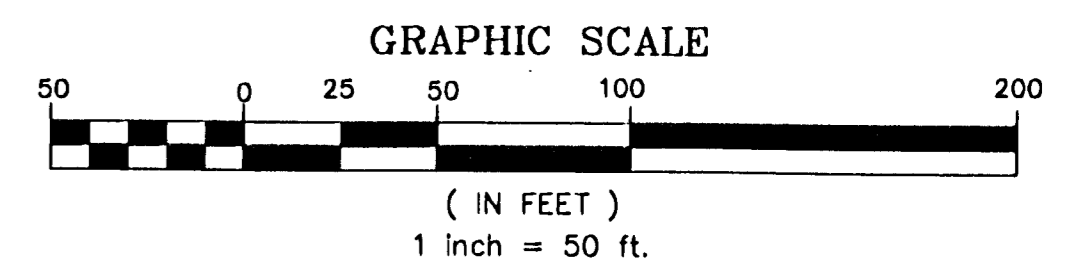
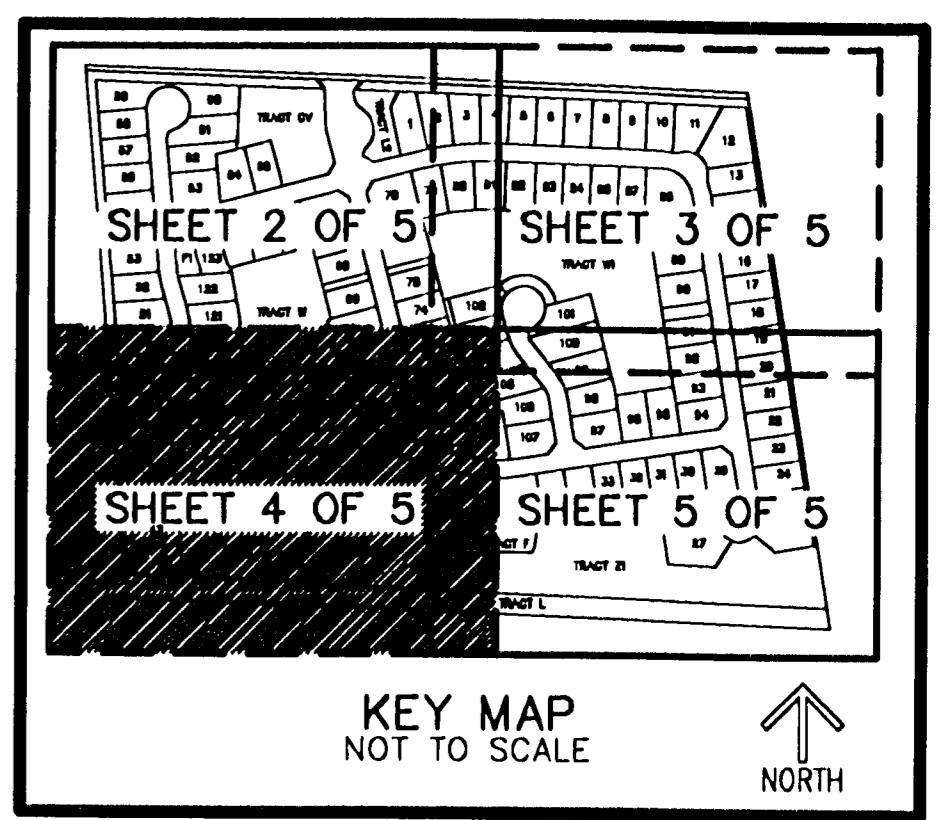
# OSPREY PLAT

A PLANNED UNIT DEVELOPMENT A PART OF LANTANA ROAD PUD  
 BEING A REPLAT OF A PORTION OF LOTS 1 AND 2, HIATUS TRACT 42, PALM BEACH FARMS COMPANY PLAT NO. 13  
 AS RECORDED IN PLAT BOOK 6, PAGES 98 AND 99 OF THE PUBLIC RECORDS OF PALM BEACH COUNTY, FLORIDA,  
 LYING IN TOWNSHIP 44 1/2 SOUTH, RANGE 42 EAST, PALM BEACH COUNTY, FLORIDA

4

STATE OF FLORIDA  
 COUNTY OF PALM BEACH  
 THIS PLAT WAS FILED FOR  
 RECORD AT \_\_\_\_\_ M.  
 THIS \_\_\_\_\_ DAY OF \_\_\_\_\_  
 A.D. 2004 AND DULY RECORDED  
 IN PLAT BOOK \_\_\_\_\_ ON  
 PAGES \_\_\_\_\_ AND \_\_\_\_\_  
 DOROTHY H. WILKEN  
 CLERK CIRCUIT COURT  
 BY: \_\_\_\_\_  
 DEPUTY CLERK

**SHEET 4 OF 5**



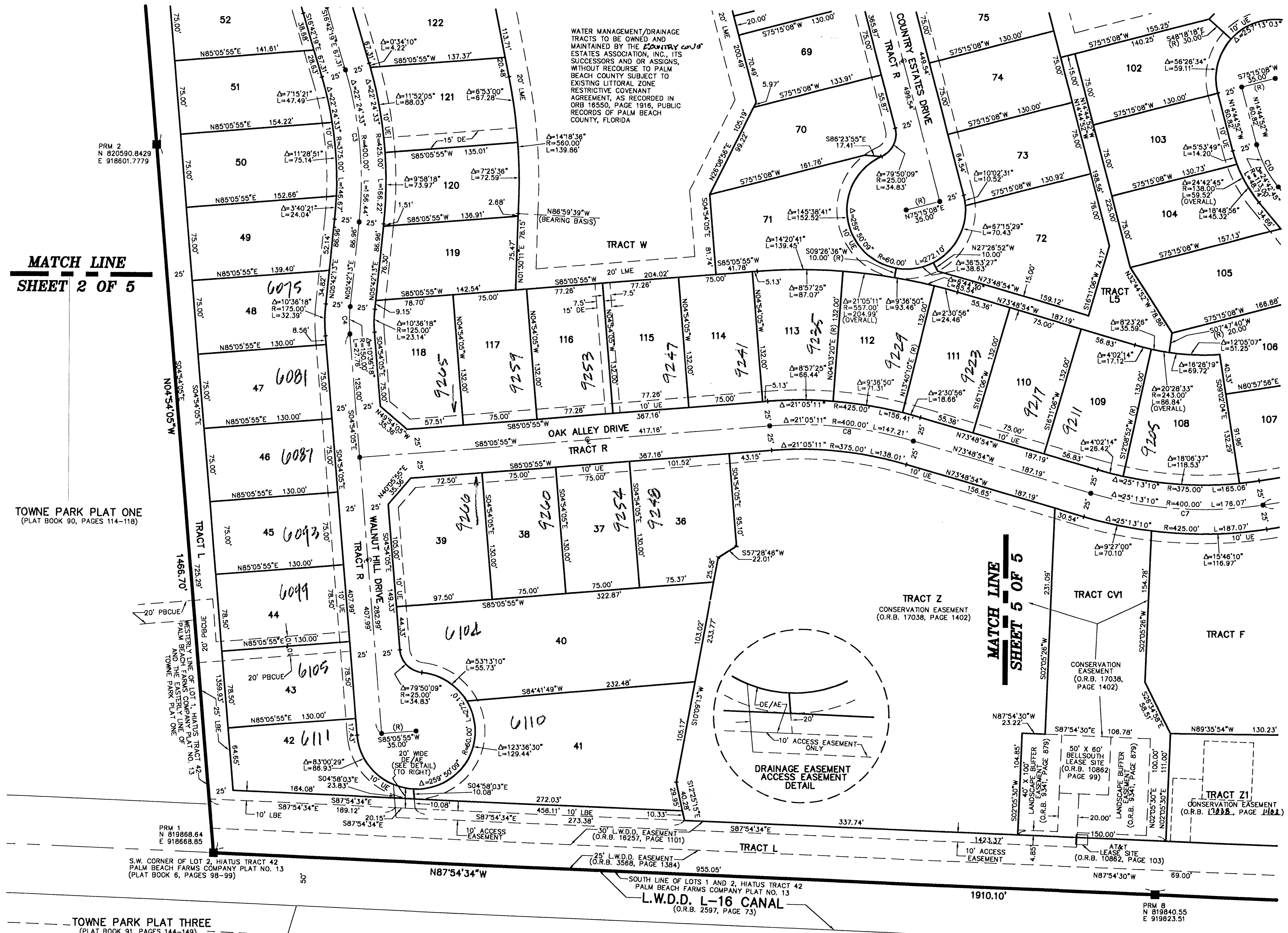
**CURVE TABLE**

CURVE NO.	CHORD BEARING	CHORD DISTANCE
C1	S08°21'20"E	36.74'
C2	S10°48'12"E	30.85'
C3	S05°30'03"E	155.45'
C4	S00°24'04"W	27.72'
C5	N83°39'11"E	219.15'
C6	S48°29'25"E	143.82'
C7	N86°25'29"W	174.65'
C8	N84°21'30"W	148.38'

**NOTES**  
 COORDINATES, BEARINGS AND DISTANCES

COORDINATES SHOWN ARE GRID  
 DATUM = NAD 83 1990 ADJUSTMENT  
 ZONE = FLORIDA EAST  
 LINEAR UNIT = US SURVEY FEET  
 COORDINATE SYSTEM 1983 STATE PLANE  
 TRANSVERSE MERCATOR PROJECTION  
 ALL DISTANCES ARE GROUND  
 SCALE FACTOR = 1.000201  
 GROUND DISTANCE X SCALE FACTOR = GRID DISTANCE  
 BEARINGS AS SHOWN HEREON ARE GRID DATUM, NAD 83 1990  
 ADJUSTMENT, FLORIDA EAST ZONE.  
 N04°54'05"W (PLAT BEARING) 00°24'17" = BEARING ROTATION  
 N05°18'22"W (GRID BEARING) (PLAT TO GRID)  
 WEST LINE THIS PLAT COUNTERCLOCKWISE

SUBDIVISION **OSPREY PLAT**  
 BOOK **103**  
 PAGE **04**  
 FLOOD HAZARD ZONING PUD  
 QUID # **048**  
 SE  
 TAZ **1026**  
 PUD NAME **LANTANA ROAD**



SHERBROOKE GOLF AND COUNTRY CLUB  
 (PLAT BOOK 69, PAGES 186-192)

TOWNE PARK PLAT ONE  
 (PLAT BOOK 90, PAGES 114-118)

**MATCH LINE**  
**SHEET 2 OF 5**

**MATCH LINE**  
**SHEET 5 OF 5**

PRM 2  
 N 820590.8429  
 E 918601.7779

PRM 1  
 N 819868.84  
 E 918668.85

PRM 8  
 N 819840.55  
 E 919823.51