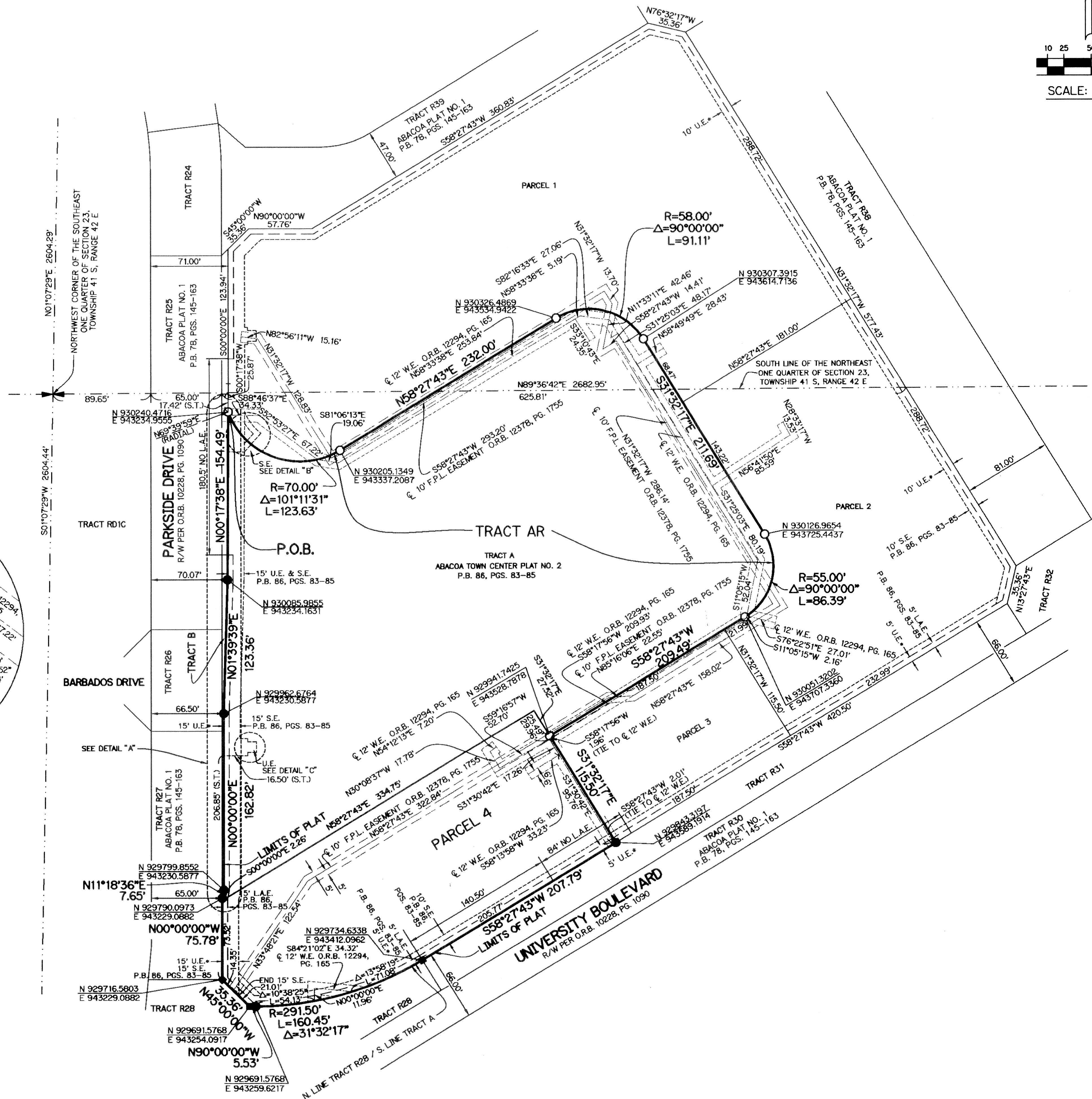
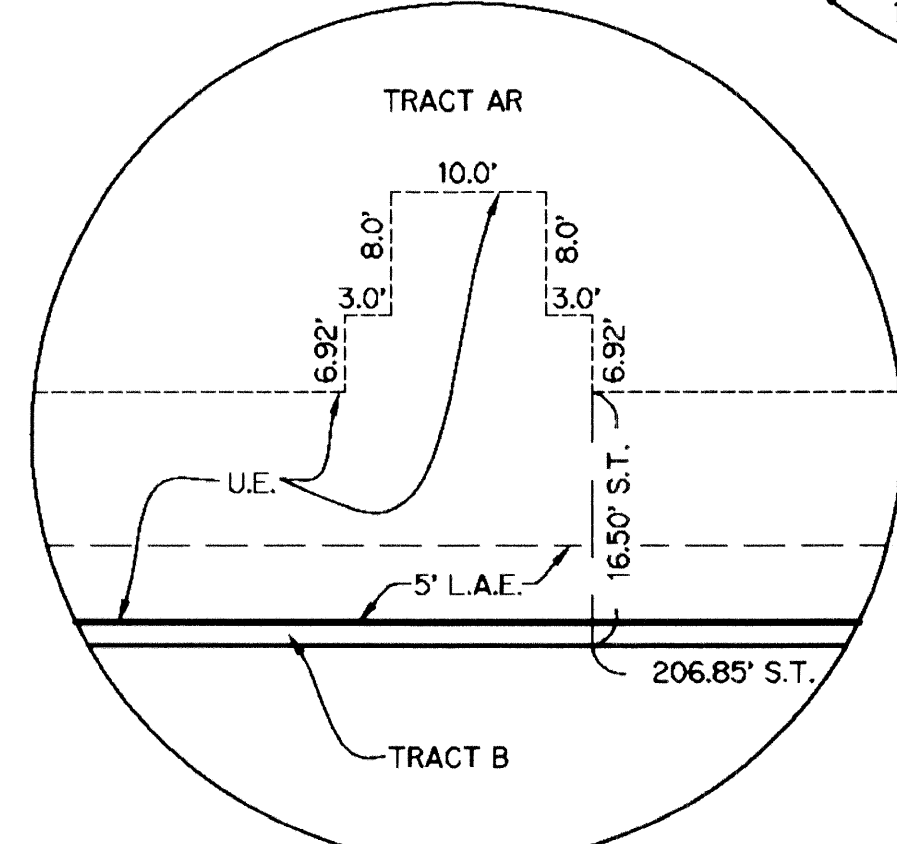
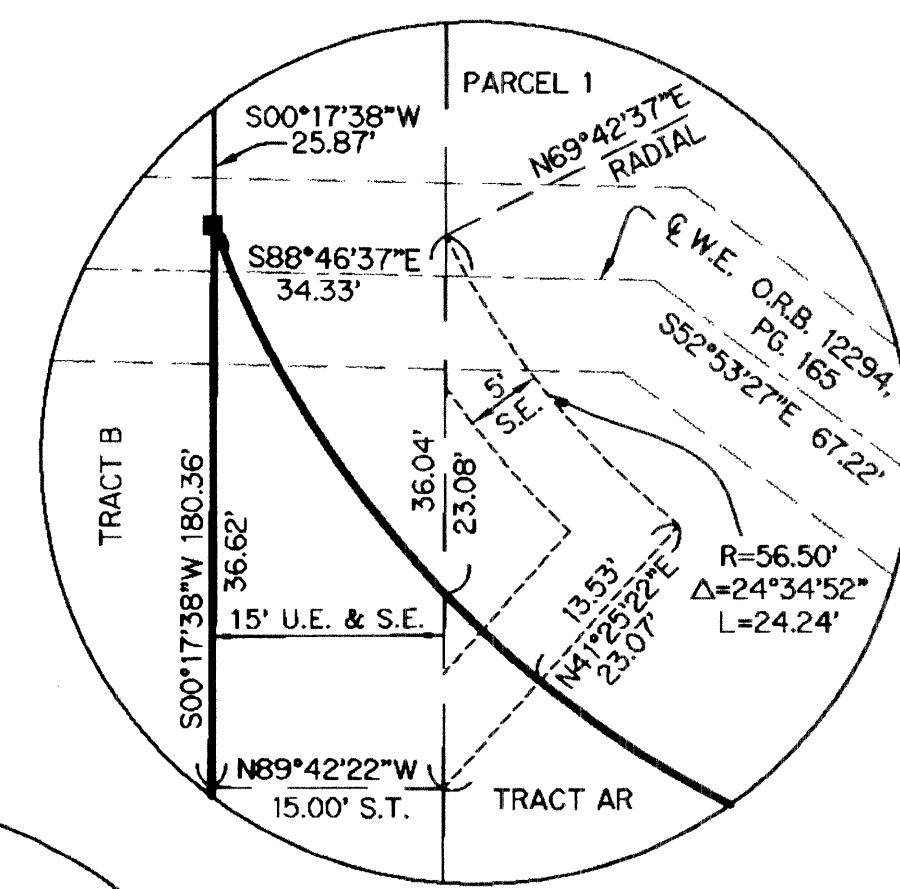
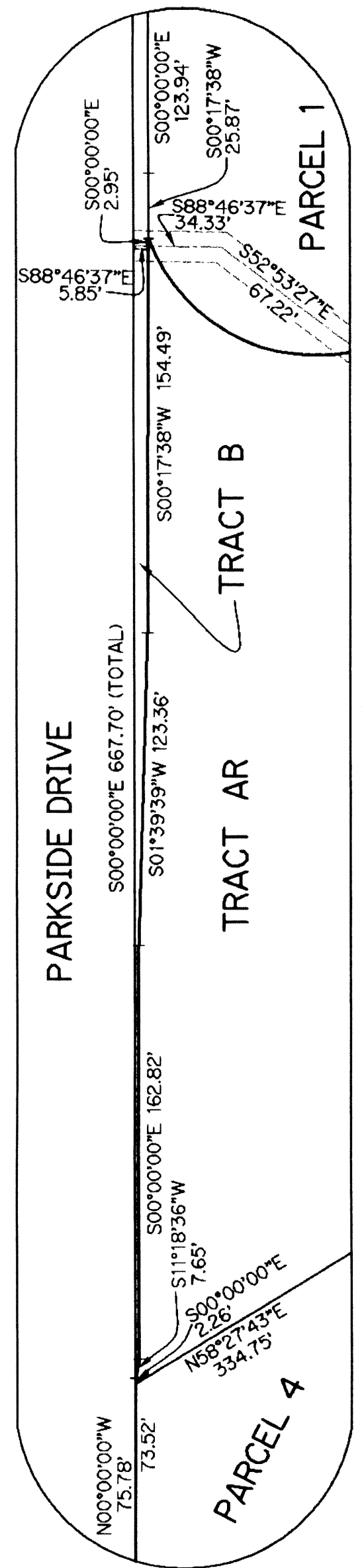
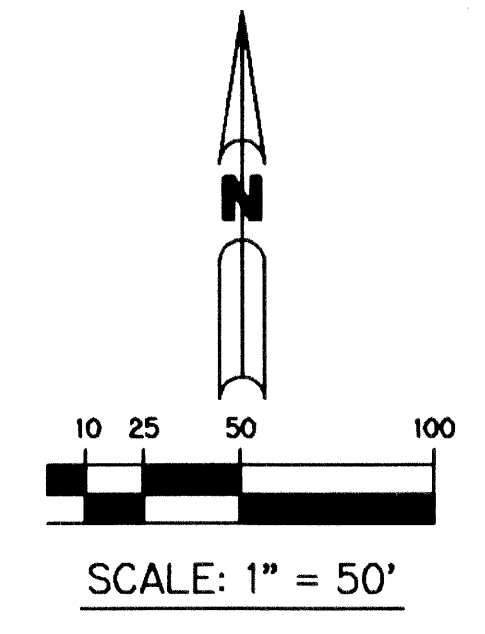


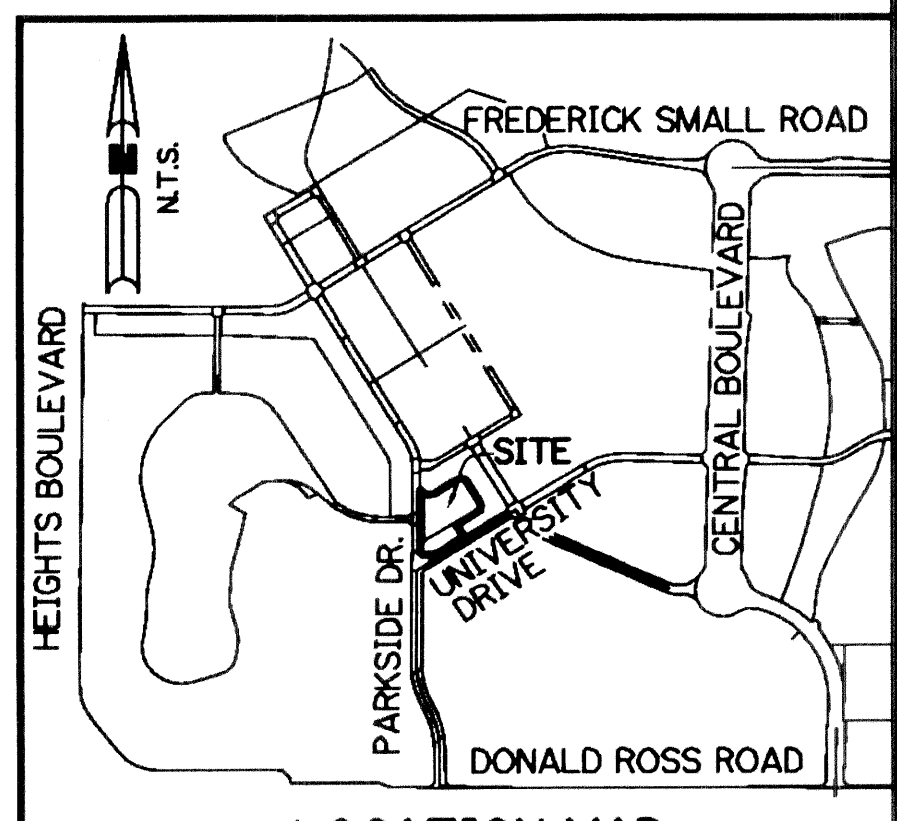
# ABACOA TOWN CENTER PLAT NO. 2 REPLAT OF TRACT A

BEING A REPLAT OF TRACT A OF ABACOA TOWN CENTER PLAT NO. 2, ACCORDING TO THE PLAT THEREOF, AS RECORDED IN PLAT BOOK 86, PAGES 83 THROUGH 85, OF THE PUBLIC RECORDS, PALM BEACH COUNTY, FLORIDA. LYING IN SECTION 23, TOWNSHIP 41 SOUTH, RANGE 42 EAST. TOWN OF JUPITER, PALM BEACH COUNTY, FLORIDA

SHEET 2 OF 2 MARCH, 2004



- LEGEND:**
- - SET PK NAIL & P.R.M. DISK IN CONCRETE, L.B. #6674
  - - FOUND PK NAIL & P.R.M. DISK IN CONCRETE, WHS L.B. #26
  - - SET PERMANENT REFERENCE MONUMENT, L.B. #6674
  - - FOUND PERMANENT REFERENCE MONUMENT, WHS L.B. #26
  - L.A.E. - LIMITED ACCESS EASEMENT
  - O.R.B. - OFFICIAL RECORD BOOK
  - P.B. - PLAT BOOK
  - P.O.B. - POINT OF BEGINNING
  - PGS. - PAGE(S)
  - P.S.M. - PROFESSIONAL SURVEYOR AND MAPPER
  - R/W - RIGHT-OF-WAY
  - F.P.L. - FLORIDA POWER & LIGHT
  - L.A.E. - LIMITED ACCESS EASEMENT
  - U.E. - UTILITY EASEMENT
  - W.E. - WATER LINE EASEMENT
  - S.E. - SIDEWALK EASEMENT
  - S.T. - SURVEY TIE
  - DENOTES EASEMENTS PER ABACOA - PLAT NO. 1, P.B. 78, PGS. 145 THROUGH 163
  - N 931379.1119 E 785294.7754 - DENOTES STATE PLANE COORDINATES



THIS INSTRUMENT PREPARED BY  
 DAVID L. SMITH, P.S.M. LS-4951, STATE OF FLORIDA  
 LAWSON, NOBLE AND WEBB, INC.  
 ENGINEERS PLANNERS SURVEYORS  
 420 COLUMBIA DRIVE WEST PALM BEACH, FLORIDA 33409  
 LB-6674