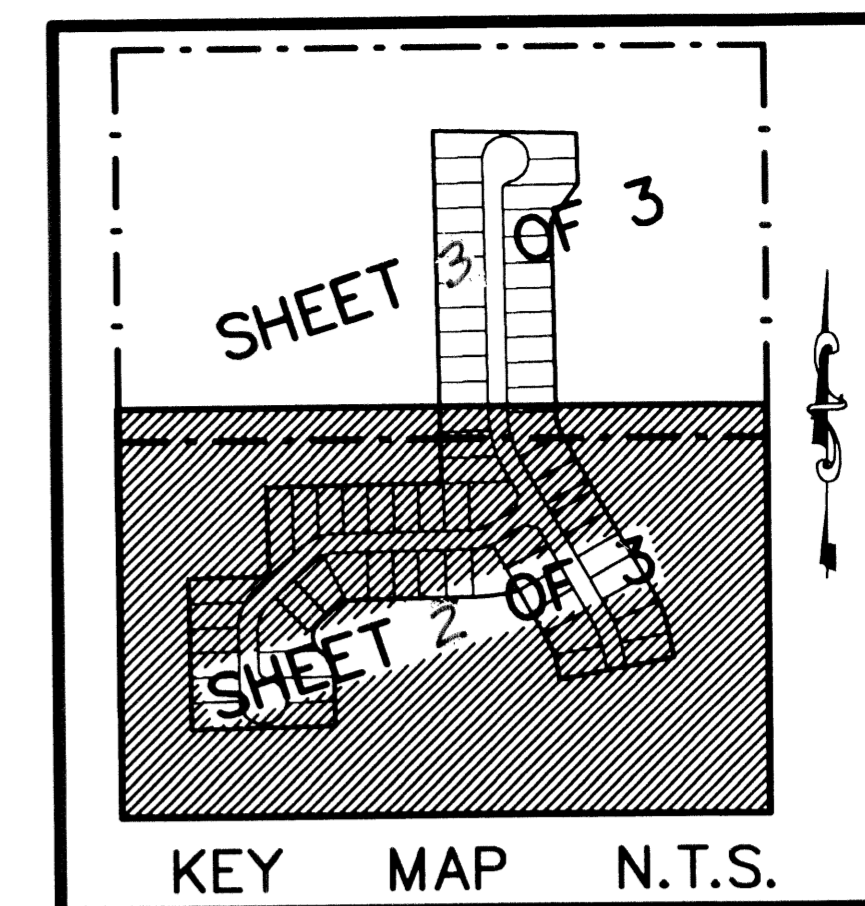


STATE OF FLORIDA
COUNTY OF PALM BEACH
THIS PLAT WAS FILED FOR
RECORD AT _____ M.
THIS _____ DAY OF _____
A.D. 2004 AND DULY RECORDED
IN PLAT BOOK _____ ON
PAGES _____ AND _____

DOROTHY H. WILKEN
CLERK CIRCUIT COURT

BY: _____
DEPUTY CLERK

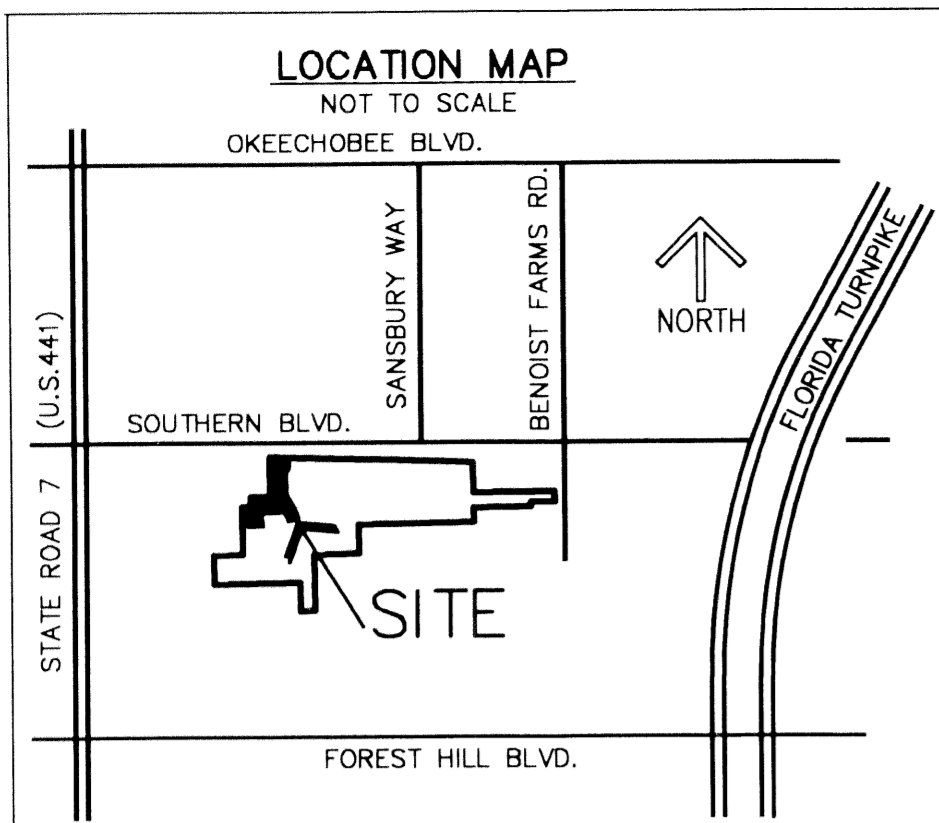
SHEET 2 OF 3



DIAMOND "C" RANCH POD C REPLAT

A PLANNED UNIT DEVELOPMENT BEING A PART OF DIAMOND "C" RANCH PUD, BEING A REPLAT OF POD C, DIAMOND "C" RANCH,
AS RECORDED IN PLAT BOOK 99, PAGES 173 THROUGH 179 OF THE PUBLIC RECORDS OF PALM BEACH COUNTY, FLORIDA
LYING IN SECTION 6, TOWNSHIP 44 SOUTH, RANGE 42 EAST, PALM BEACH COUNTY, FLORIDA

THIS INSTRUMENT PREPARED BY
DAVID P. LINDLEY
OF
CAULFIELD and WHEELER, INC.
SURVEYORS - ENGINEERS - PLANNERS
7301-A WEST PALMETTO PARK ROAD, SUITE 100A
BOCA RATON, FLORIDA 33433 - (561)392-1991
AUGUST - 2002

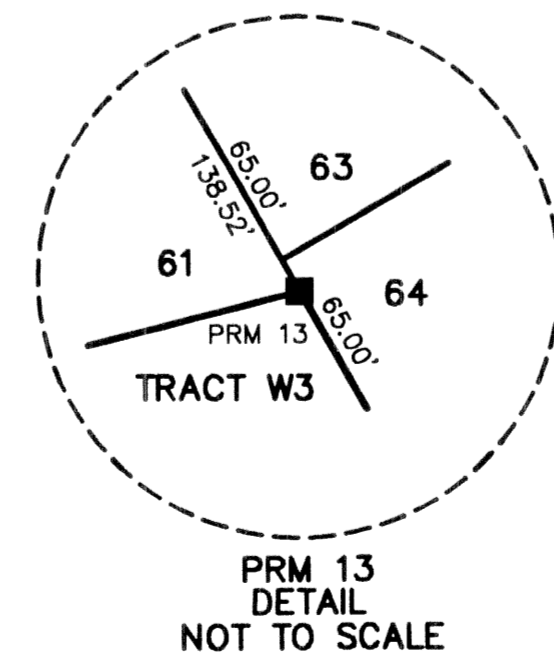
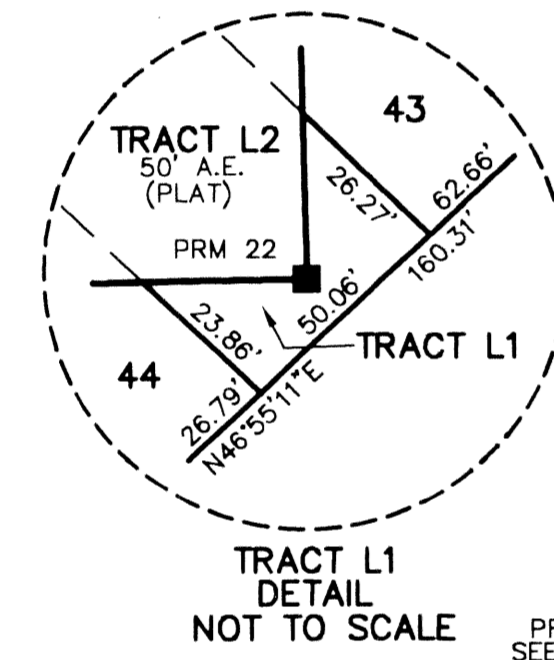
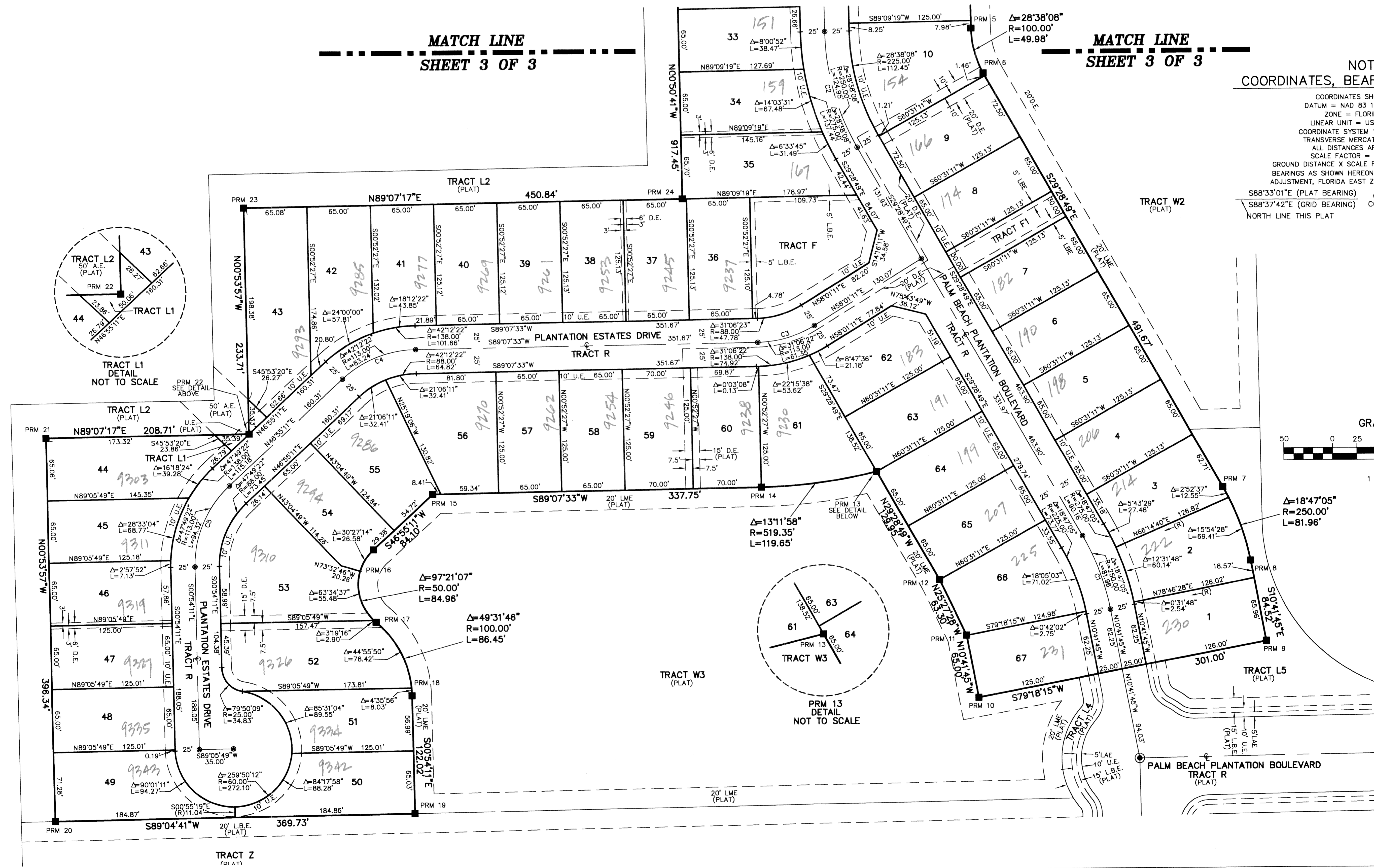
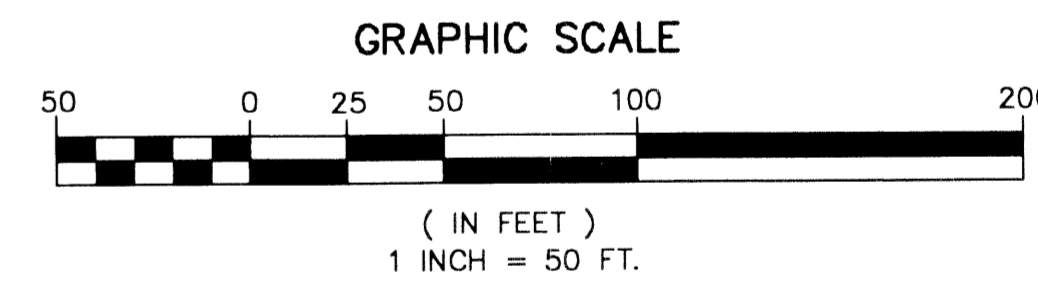


MATCH LINE
SHEET 3 OF 3

MATCH LINE
SHEET 3 OF 3

NOTES COORDINATES, BEARINGS AND DISTANCES

COORDINATES SHOWN ARE GRID
DATUM = NAD 83 1990 ADJUSTMENT
ZONE = FLORIDA EAST
LINEAR UNIT = US SURVEY FEET
COORDINATE SYSTEM 1983 STATE PLANE
TRANSVERSE MERCATOR PROJECTION
ALL DISTANCES ARE GROUND
SCALE FACTOR = 1.00002175
GROUND DISTANCE X SCALE FACTOR = GRID DISTANCE
BEARINGS AS SHOWN HEREON ARE GRID DATUM, NAD 83 1990
ADJUSTMENT, FLORIDA EAST ZONE.
S88°33'01"E (PLAT BEARING) 00°04'41" = BEARING ROTATION
S88°37'42"E (GRID BEARING) COUNTER CLOCKWISE (PLAT TO GRID)
NORTH LINE THIS PLAT



SUBDIVISION DIAMOND C RANCH POD C REPLAT
PAGE 141
FLOOR MAP # 100 A
ZONING PUD
QUAD # 47
SE
TAZ 75B
PUD NAME DIAMOND C RANCH