

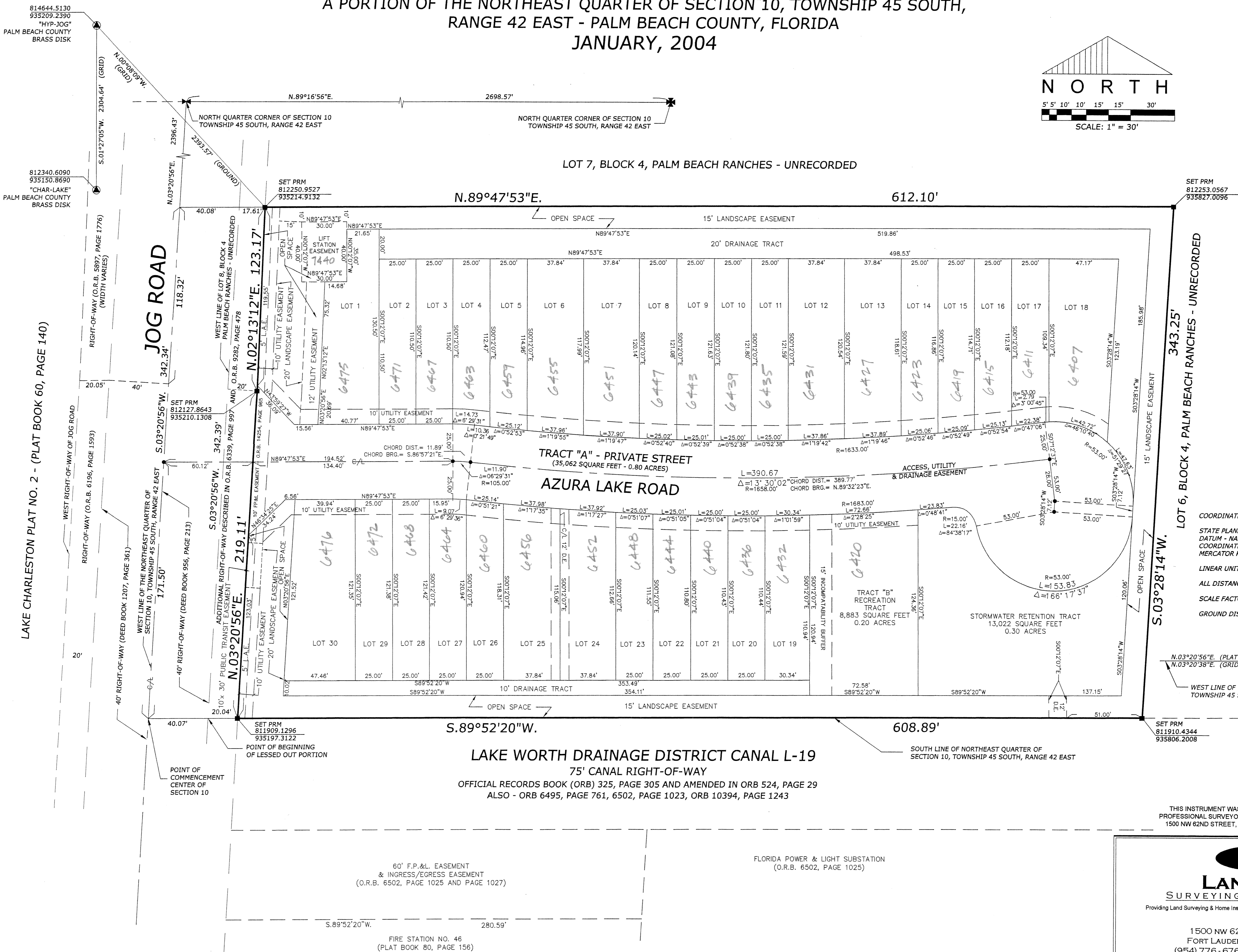
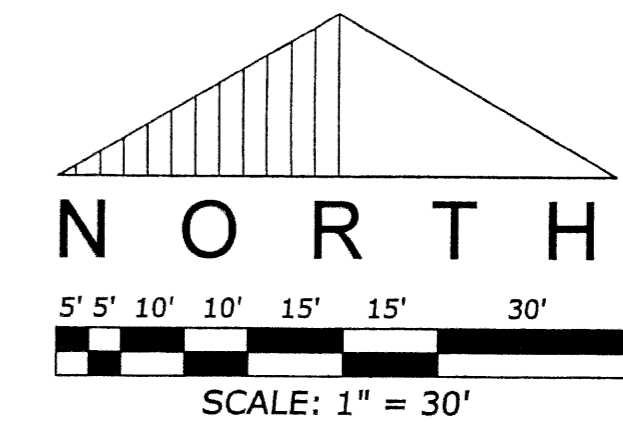
AZURA TOWNHOUSES

A PORTION OF THE NORTHEAST QUARTER OF SECTION 10, TOWNSHIP 45 SOUTH, RANGE 42 EAST - PALM BEACH COUNTY, FLORIDA
 JANUARY, 2004

SHEET 2 OF 2

92

STATE OF FLORIDA)
 COUNTY OF PALM BEACH) SS
 THIS PLAT WAS FILED FOR RECORD AT _____ DAY OF _____ A.D. 2004, AND DULY RECORDED IN PLAT BOOK _____ ON PAGES _____ THROUGH _____
 DOROTHY H. WILKEN
 CLERK OF THE CIRCUIT COURT
 BY: _____ DEPUTY CLERK



LAKE CHARLESTON PLAT NO. 2 - (PLAT BOOK 60, PAGE 140)

LOT 6, BLOCK 4, PALM BEACH RANCHES - UNRECORDED

COORDINATE NOTE:
 STATE PLANE COORDINATES SHOWN HEREON ARE GRID DATUM - NAD 83, 1990 ADJUSTMENT, FLORIDA EAST ZONE COORDINATE SYSTEM 1983 STATE PLANE TRANSVERSE MERCATOR PROJECTION.
 LINEAR UNIT - U.S. SURVEY FOOT
 ALL DISTANCES ARE GROUND
 SCALE FACTOR = 1.0000303
 GROUND DISTANCE x SCALE FACTOR = GRID DISTANCE
 N.03°20'56\"/>

LAKE WORTH DRAINAGE DISTRICT CANAL L-19
 75' CANAL RIGHT-OF-WAY
 OFFICIAL RECORDS BOOK (ORB) 325, PAGE 305 AND AMENDED IN ORB 524, PAGE 29
 ALSO - ORB 6495, PAGE 761, 6502, PAGE 1023, ORB 10394, PAGE 1243

SUBMISSION AZURA TOWNHOUSES
 PAGE 92
 FLOOD ZONE B
 QUAD # 34
 SHEET 440
 PUD NAME

THIS INSTRUMENT WAS PREPARED BY ANDREW SNYDER, PROFESSIONAL SURVEYOR & MAPPER - LICENSE NUMBER 5639 1500 NW 62ND STREET, FORT LAUDERDALE, FLORIDA, 33309

LANDTECH
 SURVEYING & INSPECTIONS
 Providing Land Surveying & Home Inspection Services to South Florida
...measurably better!
 1500 NW 62ND STREET SUITE 511
 FORT LAUDERDALE, FLORIDA 33309
 (954) 776-6766 - FAX: (954) 776-4660
LANDTECHSURVEY.COM

60' F.P.&L. EASEMENT & INGRESS/EGRESS EASEMENT (O.R.B. 6502, PAGE 1025 AND PAGE 1027)

FLORIDA POWER & LIGHT SUBSTATION (O.R.B. 6502, PAGE 1025)

FIRE STATION NO. 46 (PLAT BOOK 80, PAGE 156)