

THIS INSTRUMENT PREPARED BY
 DAVID P. LINDLEY
 OF
CAULFIELD and WHEELER, INC.
 SURVEYORS - ENGINEERS - PLANNERS
 7301-A WEST PALMETTO PARK ROAD, SUITE 100A
 BOCA RATON, FLORIDA 33433 - (561)392-1991
 AUGUST - 2003

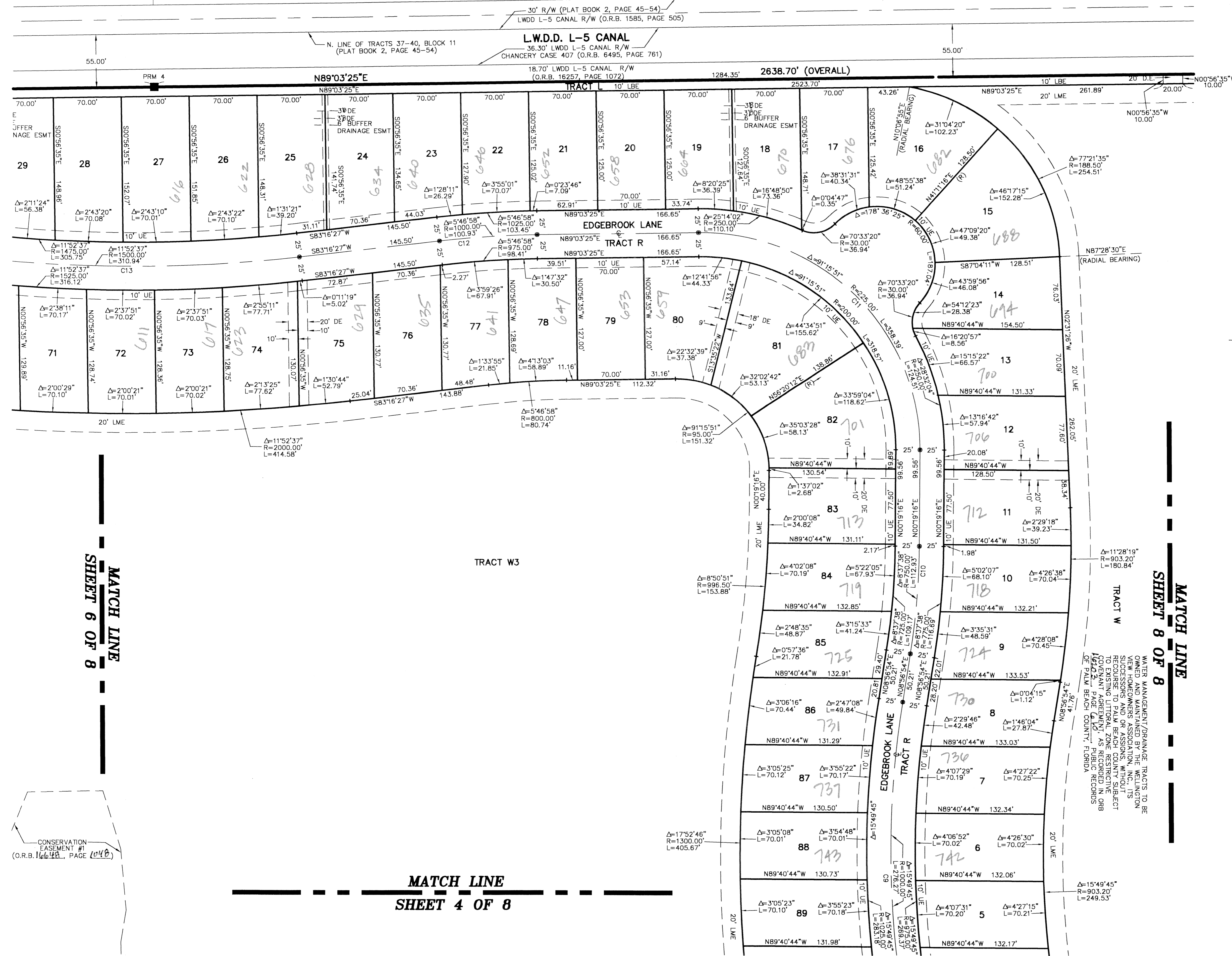
0858-001

WELLINGTON VIEW

A PLANNED UNIT DEVELOPMENT, BEING A REPLAT OF A PORTION OF BLOCK 11, PALM BEACH FARMS COMPANY PLAT NO. 3,
 AS RECORDED IN PLAT BOOK 2, PAGES 45 THROUGH 54, OF THE PUBLIC RECORDS OF PALM BEACH COUNTY, FLORIDA,
 LYING IN SECTIONS 5, 6, 7 AND 8 TOWNSHIP 44 SOUTH, RANGE 42 EAST, PALM BEACH COUNTY, FLORIDA

TRACT 27, BLOCK 11
 PALM BEACH FARMS COMPANY PLAT NO. 3
 (PLAT BOOK 2, PAGE 45-54)

TRACT 28, BLOCK 11
 PALM BEACH FARMS COMPANY PLAT NO. 3
 (PLAT BOOK 2, PAGE 45-54)



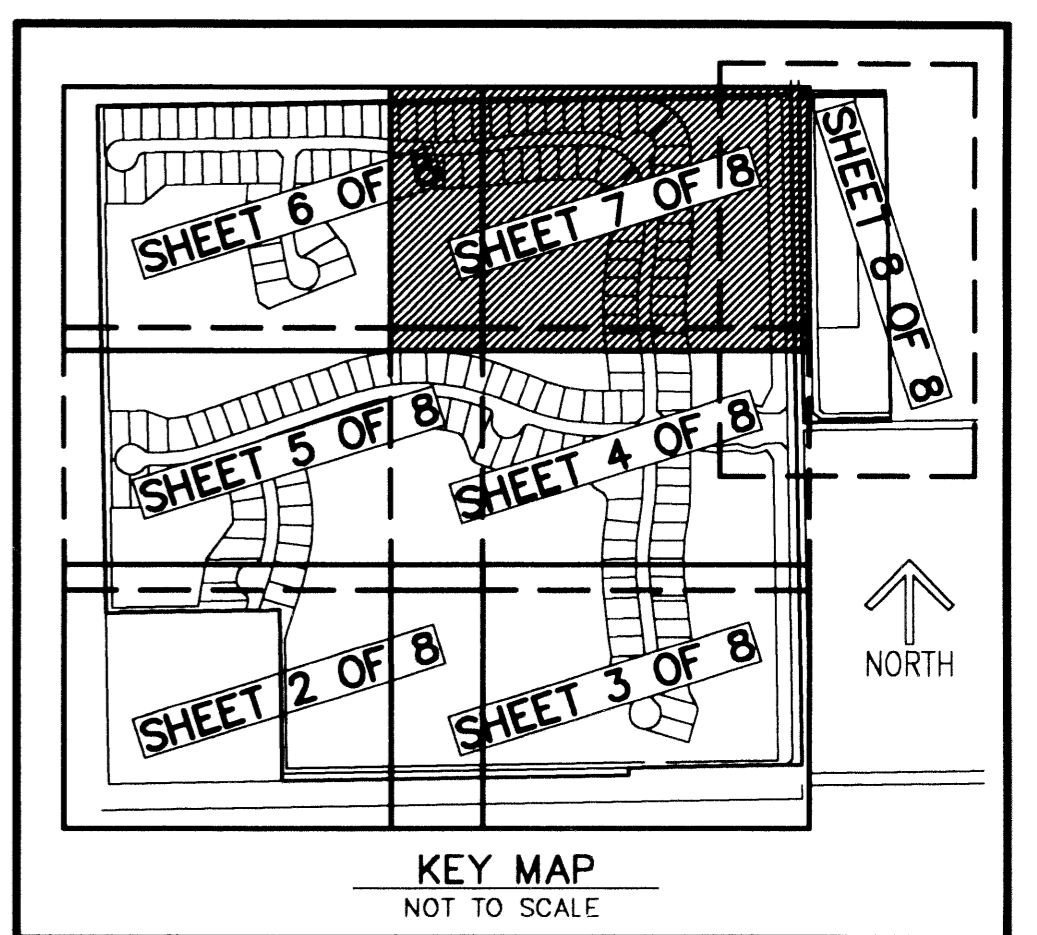
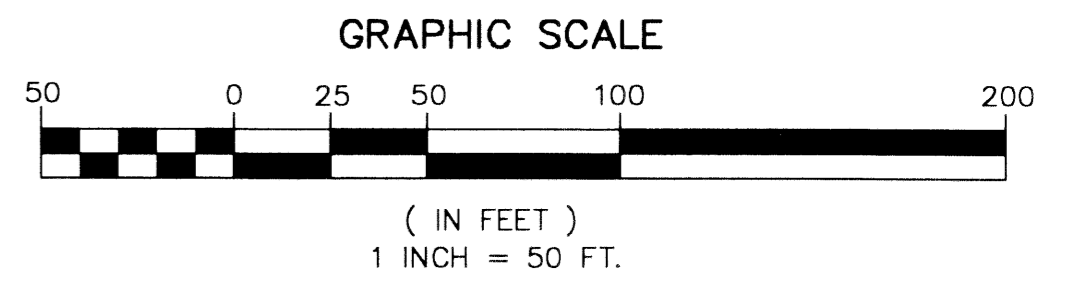
46

STATE OF FLORIDA
 COUNTY OF PALM BEACH
 THIS PLAT WAS FILED FOR
 RECORD AT _____ M.
 THIS _____ DAY OF
 A.D. 2004 AND DULY RECORDED
 IN PLAT BOOK _____ ON
 PAGES _____ AND _____
 DOROTHY H. WILKEN
 CLERK CIRCUIT COURT
 BY: _____
 DEPUTY CLERK

SHEET 7 OF 8

NOTES COORDINATES, BEARINGS AND DISTANCES

COORDINATES SHOWN ARE GRID
 DATUM = NAD 83 1990 ADJUSTMENT
 ZONE = FLORIDA EAST
 LINEAR UNIT = US SURVEY FEET
 COORDINATE SYSTEM 1983 STATE PLANE
 TRANSVERSE MERCATOR PROJECTION
 ALL DISTANCES ARE GROUND
 SCALE FACTOR = 1.0000223
 GROUND DISTANCE X SCALE FACTOR = GRID DISTANCE
 BEARINGS AS SHOWN HEREON ARE GRID DATUM,
 NAD 83 1990 ADJUSTMENT, FLORIDA EAST ZONE.



MATCH LINE
 SHEET 6 OF 8

MATCH LINE
 SHEET 8 OF 8

MATCH LINE
 SHEET 4 OF 8

SUBDIVISION WELLINGTON VIEW
 BLOCK 11
 PLAT NO. 3
 PLAT MAP # 160 A
 ZONING PUD
 ZONING # 47
 TAX 700
 FUD NAME

CONSERVATION
 EASEMENT #1
 (O.R.B. 16648, PAGE 046)

WATER MANAGEMENT/DRAINAGE TRACTS TO BE OWNED AND MAINTAINED BY THE WELLINGTON VIEW HOMEOWNERS ASSOCIATION. THE SUCCESSORS AND ASSIGNS OF THE HOMEOWNERS ASSOCIATION SHALL BE RESPONSIBLE FOR THE MAINTENANCE OF THE TRACTS TO BE OWNED AND MAINTAINED BY THE WELLINGTON VIEW HOMEOWNERS ASSOCIATION. AS RECORDED IN O&B OF PALM BEACH COUNTY, FLORIDA.