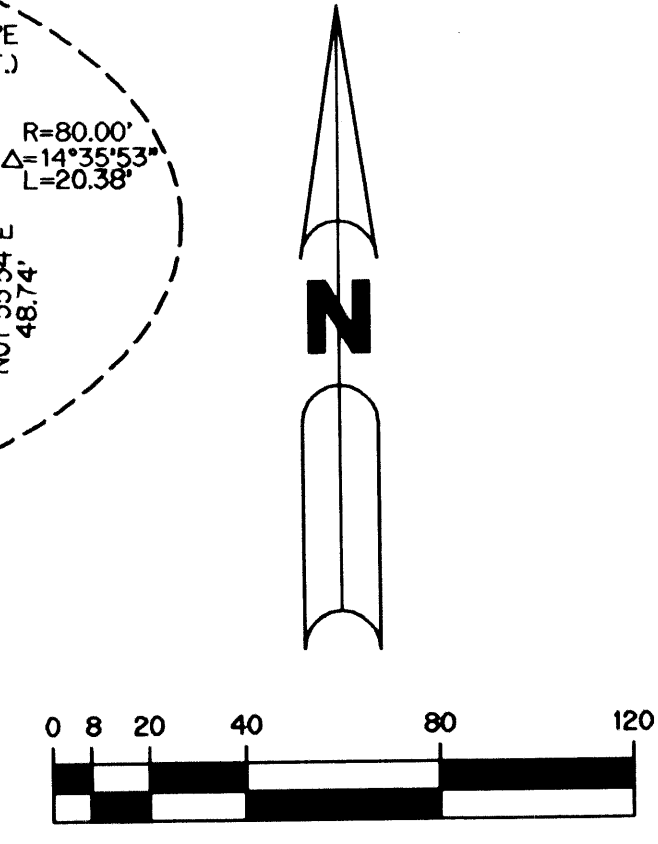
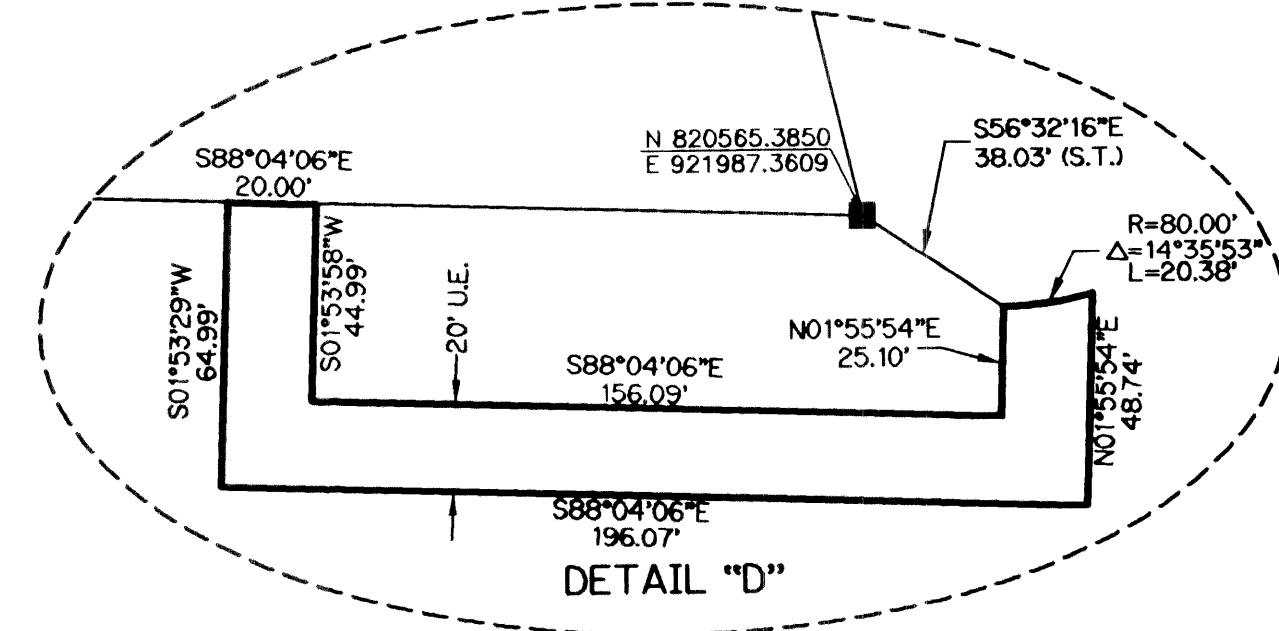


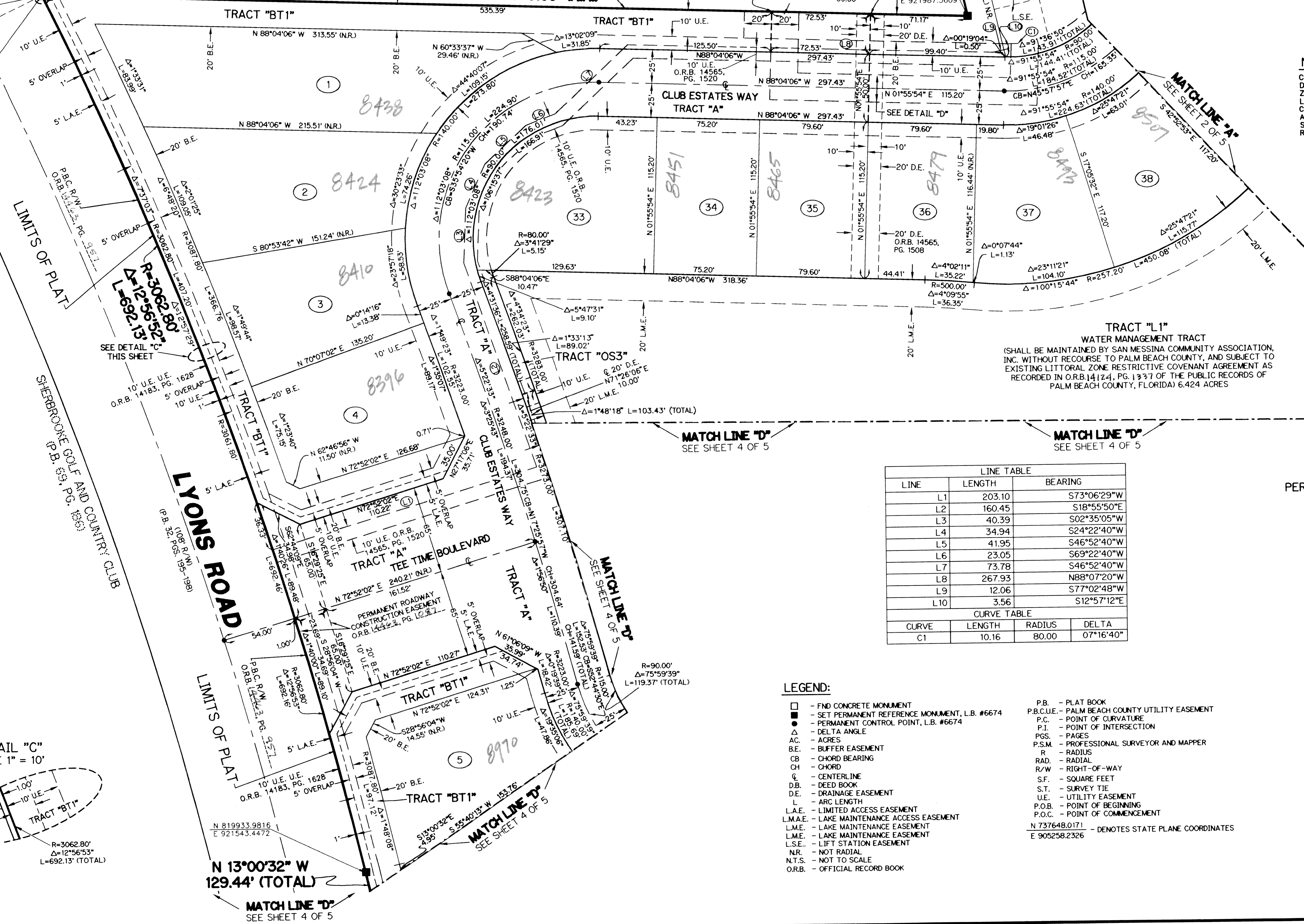
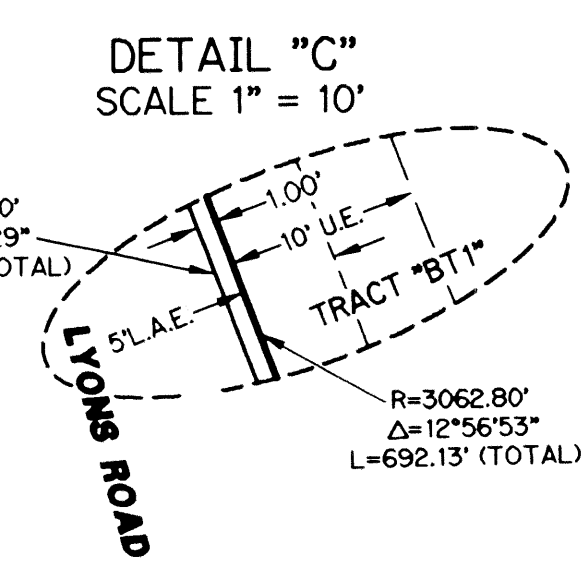
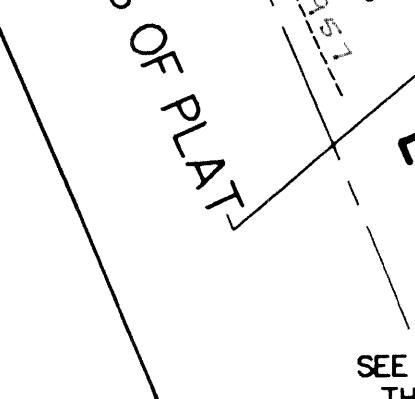
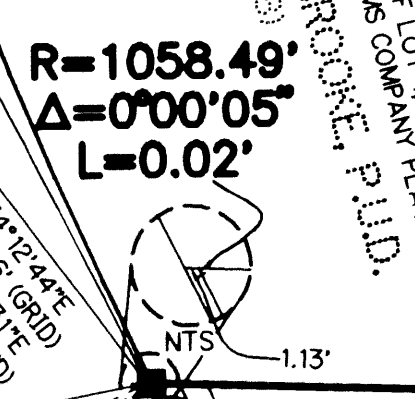
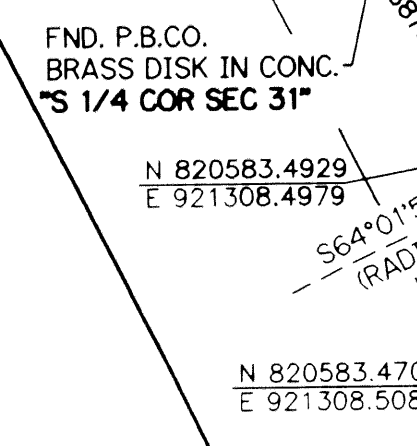
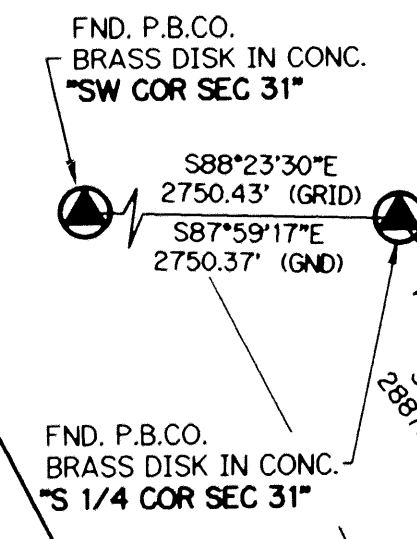
# GOLF CLUB ESTATES

GOLF CLUB ESTATES PLANNED UNIT DEVELOPMENT  
 A REPLAT OF A PORTION OF LEXINGTON I OF SHERBROOKE P.U.D., ACCORDING TO THE PLAT THEREOF AS RECORDED IN PLAT BOOK 32, PAGES 195 THROUGH 198 INCLUSIVE, AND A REPLAT OF A PORTION OF LOT 4, TRACT 41, PALM BEACH FARMS COMPANY, PLAT NO. 13, ACCORDING TO THE PLAT THEREOF AS RECORDED IN PLAT BOOK 6, PAGES 98 THROUGH 99, INCLUSIVE, ALL OF THE PUBLIC RECORDS OF PALM BEACH COUNTY, FLORIDA, SAID LANDS LYING AND BEING IN HIATUS OF TOWNSHIP 44 1/2 SOUTH, RANGE 42 EAST, PALM BEACH COUNTY, FLORIDA.

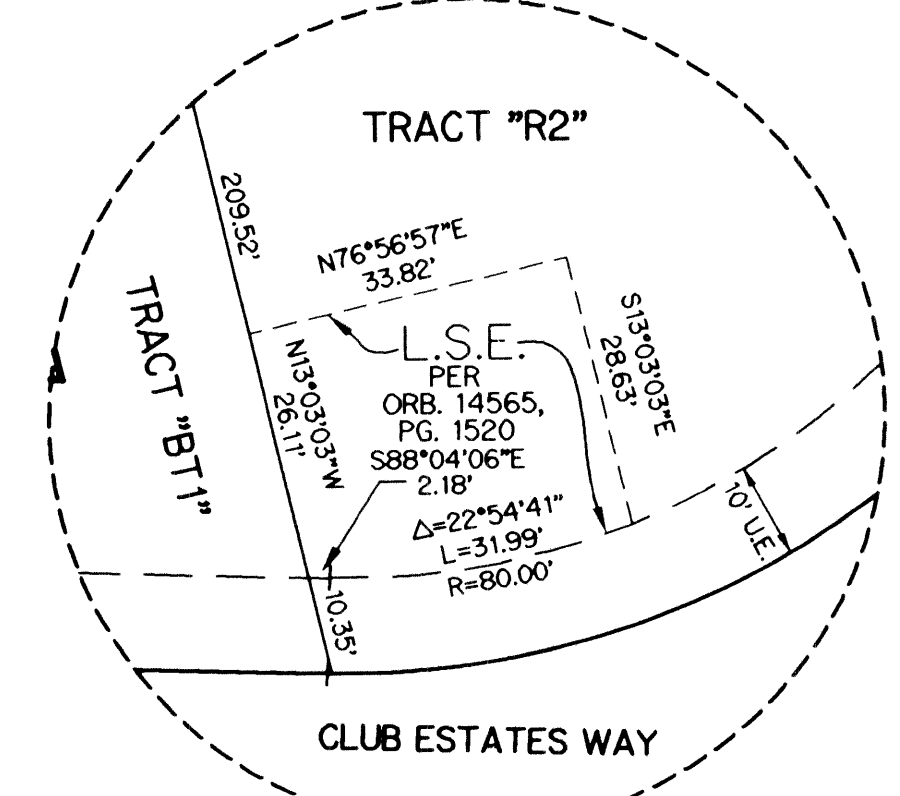
SHEET 5 OF 5 JULY, 2003  
 PALM BEACH FARMS COMPANY  
 PLAT NO. 13  
 (P.B. 6, PGS. 98 & 99)  
 NOT PART OF THIS PLAT



5



NOTE:  
 COORDINATES SHOWN ARE GRID COORDINATES  
 DATUM = NAD 83 (1990 ADJUSTMENT)  
 ZONE = FLORIDA EAST ZONE  
 LINEAR UNIT = U.S. SURVEY FEET  
 COORDINATE SYSTEM = 1983 STATE PLANE TRANSVERSE MERCATOR PROJECTION  
 ALL DISTANCES ARE GROUND  
 SCALE FACTOR = 1.0000222  
 ROTATION = 00°24'14\"/>



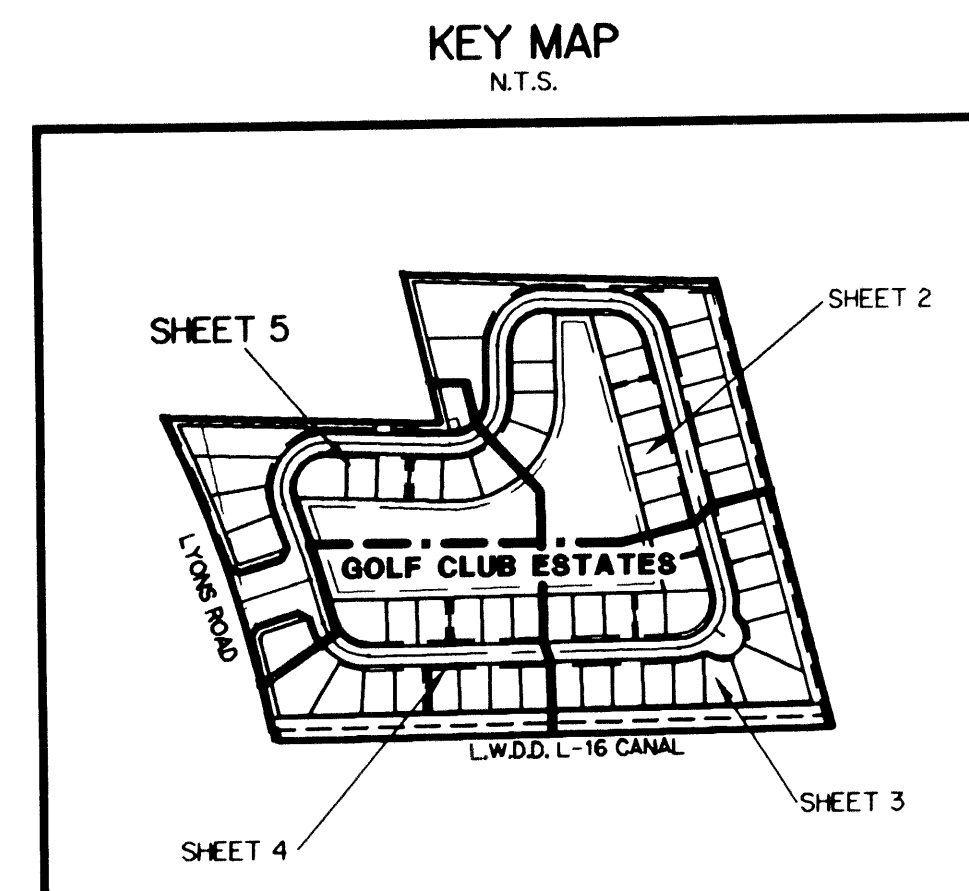
LINE	LENGTH	BEARING
L1	203.10	S73°06'29\"W
L2	160.45	S18°55'50\"E
L3	40.39	S02°35'05\"W
L4	34.94	S24°22'40\"W
L5	41.95	S46°52'40\"W
L6	23.05	S69°22'40\"W
L7	73.78	S46°52'40\"W
L8	267.93	N88°07'20\"W
L9	12.06	S77°02'48\"W
L10	3.56	S12°57'12\"E

CURVE	LENGTH	RADIUS	DELTA
C1	10.16	80.00	07°16'40\"

- LEGEND:
- - FND CONCRETE MONUMENT
  - - SET PERMANENT REFERENCE MONUMENT, L.B. #6674
  - ▲ - PERMANENT CONTROL POINT, L.B. #6674
  - Δ - DELTA ANGLE
  - AC. - ACRES
  - BE. - BUFFER EASEMENT
  - CB - CHORD BEARING
  - CH - CHORD
  - CL - CENTERLINE
  - DB. - DEED BOOK
  - DE. - DRAINAGE EASEMENT
  - L - ARC LENGTH
  - L.A.E. - LIMITED ACCESS EASEMENT
  - L.M.E. - LAKE MAINTENANCE ACCESS EASEMENT
  - L.M.E. - LAKE MAINTENANCE EASEMENT
  - L.M.E. - LAKE MAINTENANCE EASEMENT
  - L.S.E. - LIFT STATION EASEMENT
  - NR. - NOT RADIAL
  - N.T.S. - NOT TO SCALE
  - O.R.B. - OFFICIAL RECORD BOOK
  - P.B. - PLAT BOOK
  - P.B.C.U.E. - PALM BEACH COUNTY UTILITY EASEMENT
  - P.C. - POINT OF CURVATURE
  - P.I. - POINT OF INTERSECTION
  - PGS. - PAGES
  - P.S.M. - PROFESSIONAL SURVEYOR AND MAPPER
  - R - RADIUS
  - RAD. - RADIAL
  - R/W - RIGHT-OF-WAY
  - S.F. - SQUARE FEET
  - S.T. - SURVEY TIE
  - U.E. - UTILITY EASEMENT
  - P.O.B. - POINT OF BEGINNING
  - P.O.C. - POINT OF COMMENCEMENT
  - N 73°64'8.0171\"/>

THIS INSTRUMENT PREPARED BY  
 PERRY C. WHITE, P.S.M. 4213, STATE OF FLORIDA  
 LAWSON, NOBLE AND WEBB, INC.  
 ENGINEERS PLANNERS SURVEYORS  
 420 COLUMBIA DRIVE  
 WEST PALM BEACH, FLORIDA 33409  
 LB-6674



STATION: 31 GOLF CLUB ESTATES  
 TRACT 5  
 PLAT NO. 170A  
 P.B. 32, PGS. 170A  
 TRACT 40  
 P.B. 6, PGS. 98 & 99  
 TRACT 1025 GOLF CLUB EST.  
 PUB. NAME: GOLF CLUB EST.