

GOLF CLUB ESTATES PLANNED UNIT DEVELOPMENT

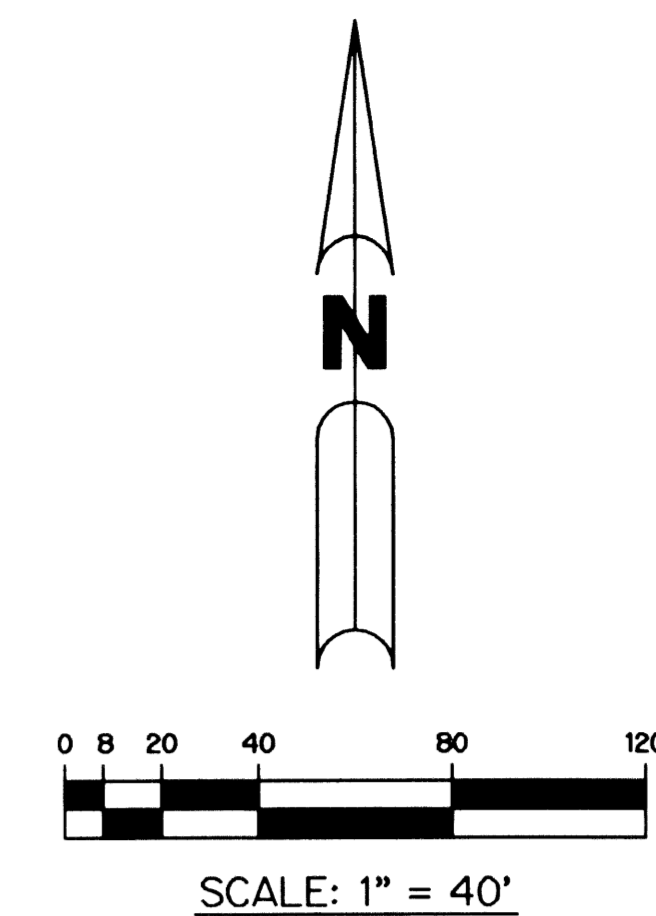
# GOLF CLUB ESTATES

A REPLAT OF A PORTION OF LEXINGTON I OF SHERBROOKE P.U.D., ACCORDING TO THE PLAT THEREOF AS RECORDED IN PLAT BOOK 32, PAGES 195 THROUGH 198 INCLUSIVE, AND A REPLAT OF A PORTION OF LOT 4, TRACT 41, PALM BEACH FARMS COMPANY, PLAT NO. 13, ACCORDING TO THE PLAT THEREOF AS RECORDED IN PLAT BOOK 6, PAGES 98 THROUGH 99, INCLUSIVE, ALL OF THE PUBLIC RECORDS OF PALM BEACH COUNTY, FLORIDA, SAID LANDS LYING AND BEING IN HIATUS OF TOWNSHIP 44 1/2 SOUTH, RANGE 42 EAST, PALM BEACH COUNTY, FLORIDA.

SHEET 3 OF 5 JULY, 2003

LEGEND:

- - FND CONCRETE MONUMENT
- - SET PERMANENT REFERENCE MONUMENT, L.B. #6674
- - PERMANENT CONTROL POINT, L.B. #6674
- △ - DELTA ANGLE
- AC - ACRES
- BE - BUFFER EASEMENT
- CB - CHORD BEARING
- CH - CHORD
- C - CENTERLINE
- D.B. - DEED BOOK
- D.E. - DRAINAGE EASEMENT
- L - ARC LENGTH
- L.A.E. - LIMITED ACCESS EASEMENT
- L.M.A.E. - LAKE MAINTENANCE ACCESS EASEMENT
- L.M.E. - LAKE MAINTENANCE EASEMENT
- L.S.E. - LIFT STATION EASEMENT
- NR - NOT RADIAL
- N.T.S. - NOT TO SCALE
- O.R.B. - OFFICIAL RECORD BOOK
- P.B. - PLAT BOOK
- P.B.C.U.E. - PALM BEACH COUNTY UTILITY EASEMENT
- P.C. - POINT OF CURVATURE
- P.I. - POINT OF INTERSECTION
- PGS. - PAGES
- P.S.M. - PROFESSIONAL SURVEYOR AND MAPPER
- R - RADIUS
- RAD. - RADIAL
- R/W - RIGHT-OF-WAY
- S.F. - SQUARE FEET
- S.T. - SURVEY TIE
- UE - UTILITY EASEMENT
- P.O.B. - POINT OF BEGINNING
- P.O.C. - POINT OF COMMENCEMENT
- N 737648.0171 - DENOTES STATE PLANE COORDINATES
- E 905258.2326

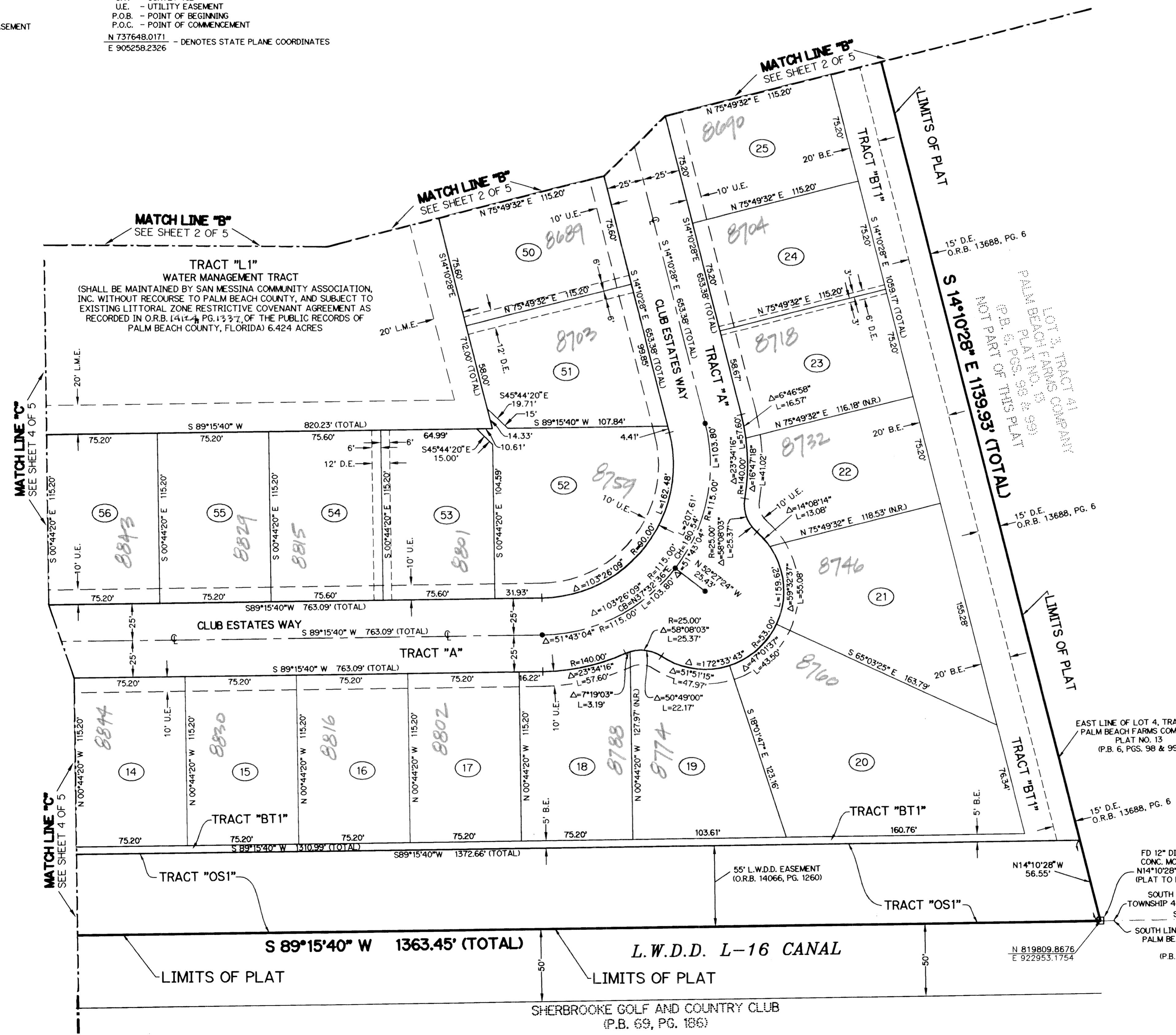
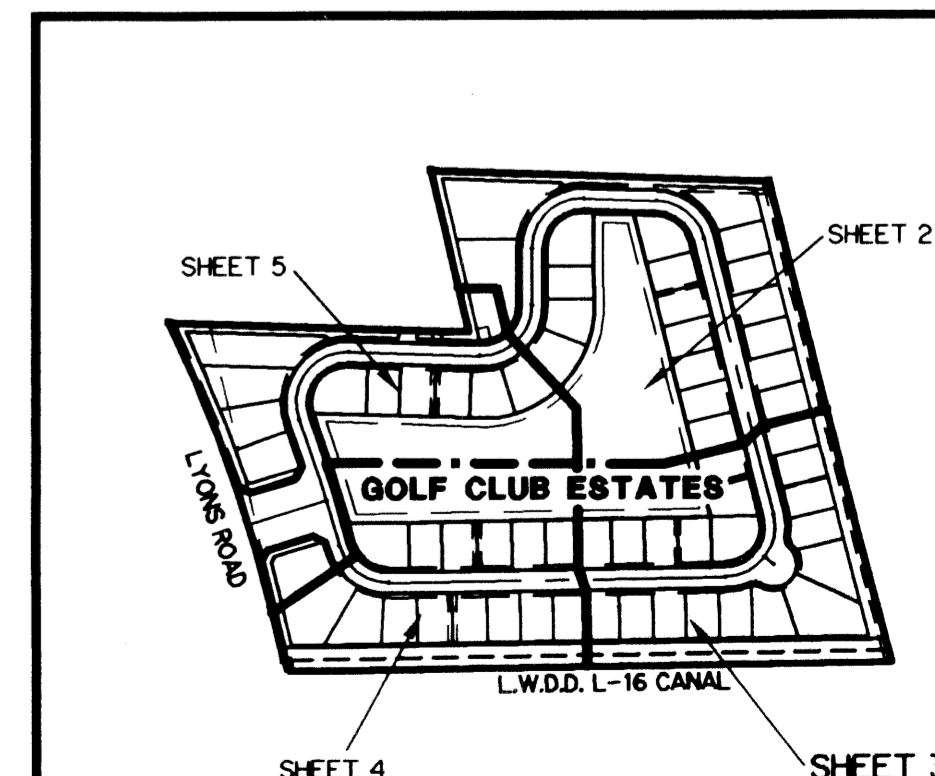


NOTE:

COORDINATES SHOWN ARE GRID COORDINATES  
 DATUM = NAD 83 (1990 ADJUSTMENT)  
 ZONE = FLORIDA EAST ZONE  
 LINEAR UNIT = U.S. SURVEY FEET  
 COORDINATE SYSTEM = 1983 STATE PLANE TRANSVERSE MERCATOR PROJECTION  
 ALL DISTANCES ARE GROUND  
 SCALE FACTOR = 1.0000222  
 ROTATION = 00°24'14" CLOCKWISE (GRID BEARING TO PLAT BEARING)

THIS INSTRUMENT PREPARED BY  
 PERRY C. WHITE, P.S.M. 4213, STATE OF FLORIDA  
 LAWSON, NOBLE AND WEBB, INC.  
 ENGINEERS PLANNERS SURVEYORS  
 420 COLUMBIA DRIVE  
 WEST PALM BEACH, FLORIDA 33409  
 LB-6674

KEY MAP  
N.T.S.



SUPERVISOR Golf Club Estates  
 9001 102  
 3000 102  
 40  
 1015  
 GOLF CLUB WAY  
 PUD NAME