

EQUUS AGR-PUD PHASE ONE REPLAT NO.2

BEING A REPLAT OF LOTS 10 THROUGH 20, EQUUS AGR-PUD PHASE ONE ACCORDING TO THE PLAT THEREOF, AS RECORDED IN PLAT BOOK 97, PAGES 11 THROUGH 24, PALM BEACH COUNTY, FLORIDA, PUBLIC RECORDS.
 IN SECTION 19, TOWNSHIP 45 SOUTH, RANGE 42 EAST, PALM BEACH COUNTY, FLORIDA
 JANUARY 2004
 SHEET 3 OF 4 SHEETS

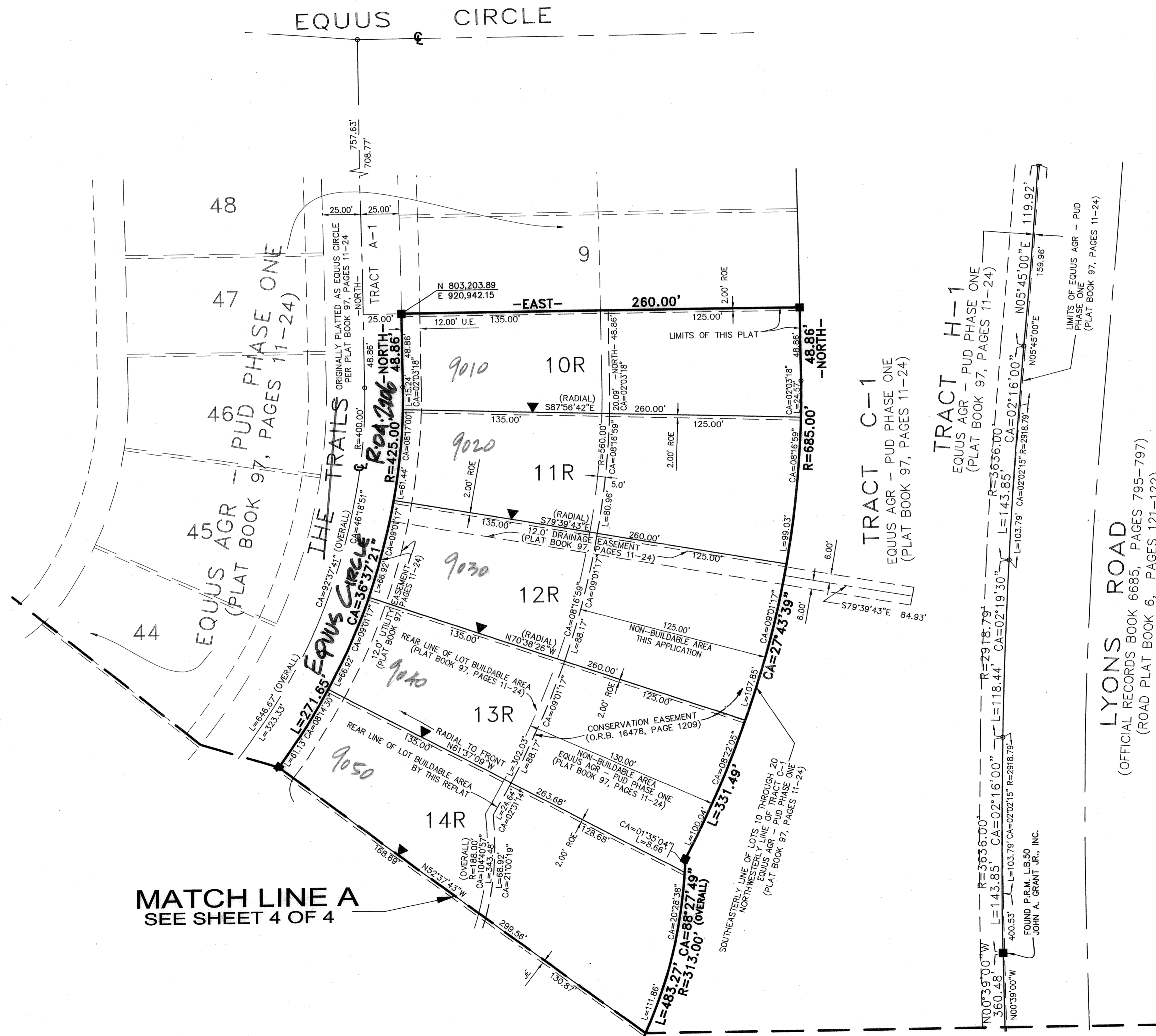
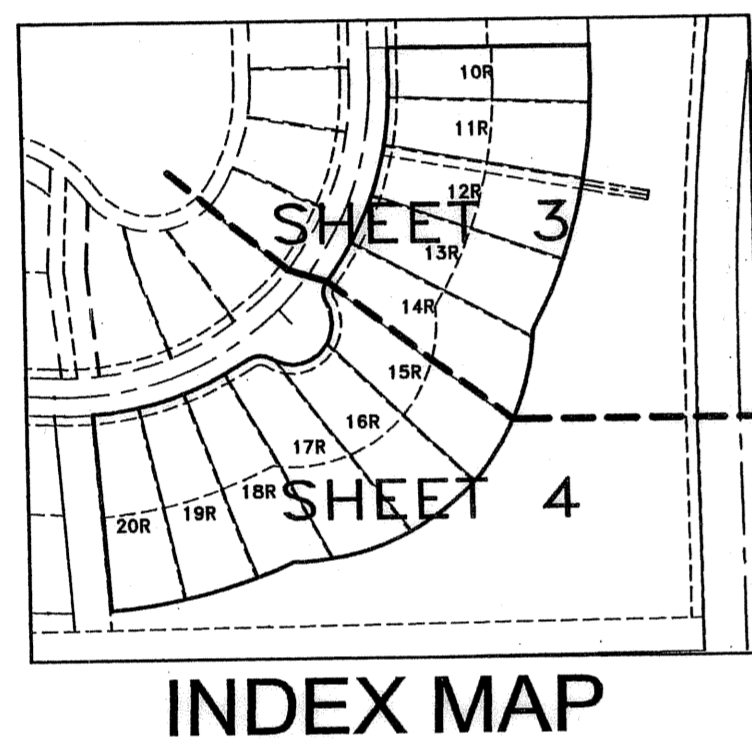
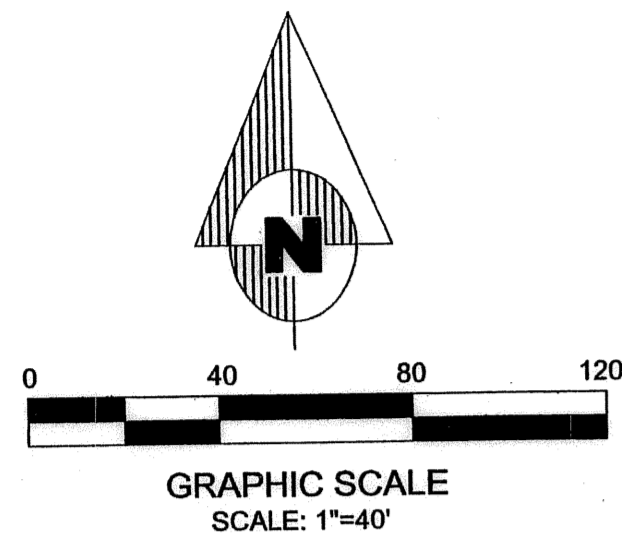
189

STATE OF FLORIDA)
 COUNTY OF PALM BEACH) SS

THIS PLAT WAS FILED FOR
 RECORD AT _____ DAY OF
 _____ A.D., 2004 AND
 DULY RECORDED IN PLAT BOOK
 _____ ON PAGES _____ AND

DOROTHY H. WILKEN, CLERK
 CIRCUIT COURT

BY: _____ DC



SUBDIVISION EQUUS AGR-PUD PH 1 REPL 2
 BOOK 101 PAGE 189
 FLOOD MAP # 1854
 ZONING AGR/PUD
 QUAD # 44/50
 SE TAZ 1028
 PUD NAME

MATCH LINE A
 SEE SHEET 4 OF 4

Dailey-Fotony, inc.
 land surveyors - planners
 5050 10th Avenue North Suite B - Lake Worth FL 33463-2062
 Phone: 561-965-8787 Fax: 561-965-8963