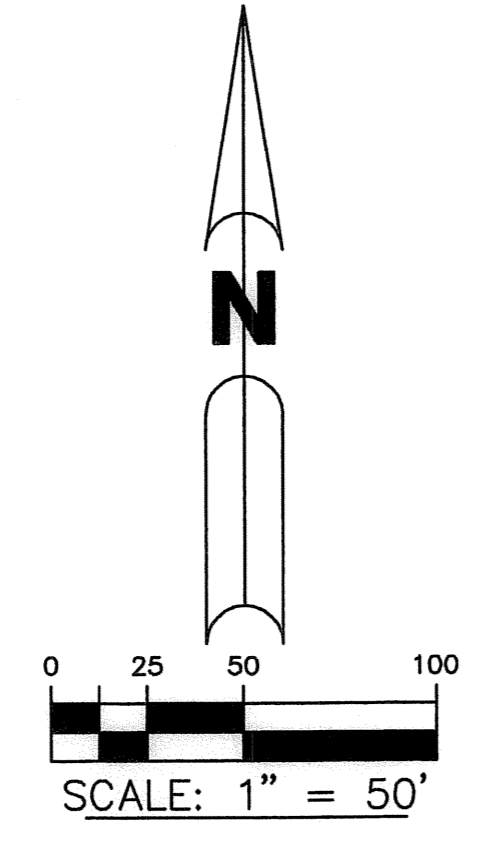


LOGGERS' RUN DISTRICT PARK "E"

A REPLAT OF TRACTS 54, 55 AND 56, SECTION 23, TOWNSHIP 47 SOUTH, RANGE 41 EAST, FLORIDA FRUIT LANDS COMPANY'S SUBDIVISION No.2, RECORDED IN PLAT BOOK 1, PAGE 102; AND TRACT P, BOCA WOODS COUNTRY CLUB PLAT 4, RECORDED IN PLAT BOOK 48, PAGE 16, OF THE PUBLIC RECORDS OF PALM BEACH COUNTY, FLORIDA, LYING IN SECTIONS 23 AND 24, TOWNSHIP 47 SOUTH, RANGE 41 EAST, PALM BEACH COUNTY, FLORIDA

JANUARY 2004

SHEET 3 OF 3

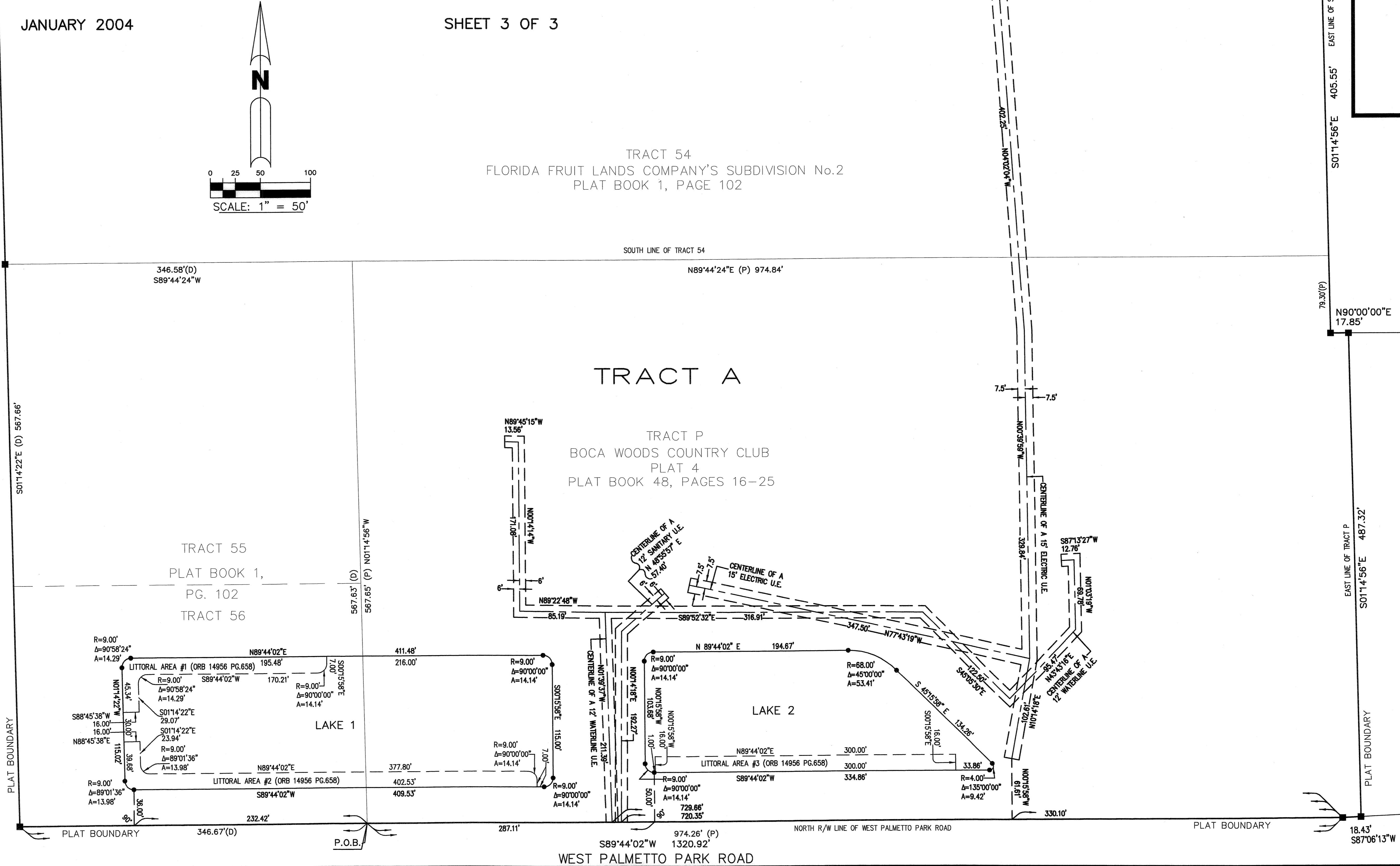


TRACT 54
FLORIDA FRUIT LANDS COMPANY'S SUBDIVISION No.2
PLAT BOOK 1, PAGE 102

TRACT A

TRACT P
BOCA WOODS COUNTRY CLUB
PLAT 4
PLAT BOOK 48, PAGES 16-25

TRACT 55
PLAT BOOK 1,
PG. 102
TRACT 56



SUBDIVISION LOGGERS' RUN DISTRICT PARK E
BOOK 101 PAGE 178 FLOOD MAP# 100 B
QUAD# 69 ZONING R0/SE
SE 12-00-576 ZIP CODE 33442-8
TAZ 10245 PUD NAME

BROWN & PHILLIPS, INC.
PROFESSIONAL SURVEYING SERVICES
CERTIFICATE OF AUTHORIZATION # LB 6473
3969 N. HAVERHILL RD, SUITE 105, WEST PALM BEACH, FLORIDA 33417 561-615-3988, 615-3986 FAX

THIS INSTRUMENT PREPARED BY:
JOHN E. PHILLIPS, III
PROFESSIONAL SURVEYOR & MAPPER
3969 N. HAVERHILL RD, SUITE 105
WEST PALM BEACH, FLORIDA 33417
LICENSE No. 4826
STATE OF FLORIDA

**DETAIL SHEET
LOGGERS' RUN
DISTRICT PARK "E"**

DRAWN: MDB	PROJ. NO. 99-066
CHECKED: JEPIII	SCALE: 1"=50'
FIELD BOOK:	DATE: 10/10/03
PAGES:	SHEET 3 OF 3