

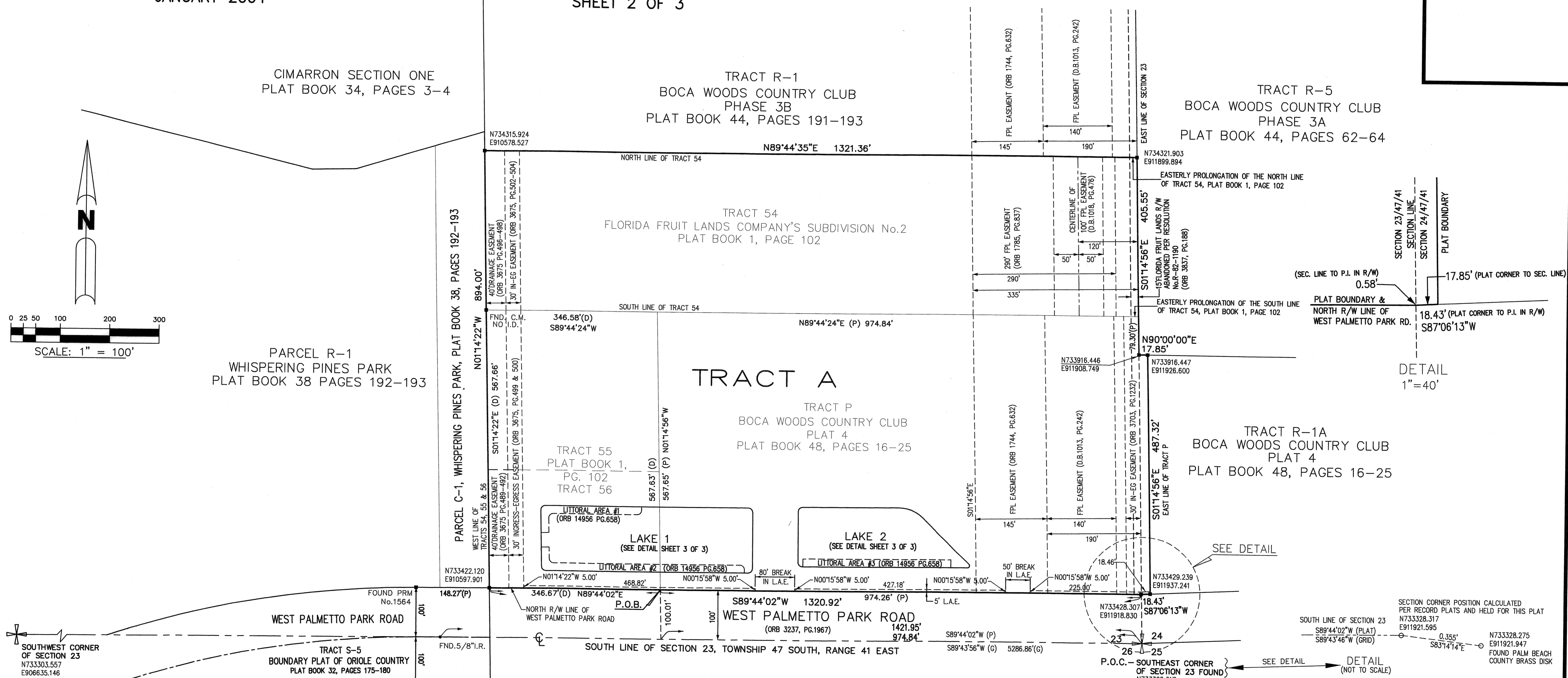
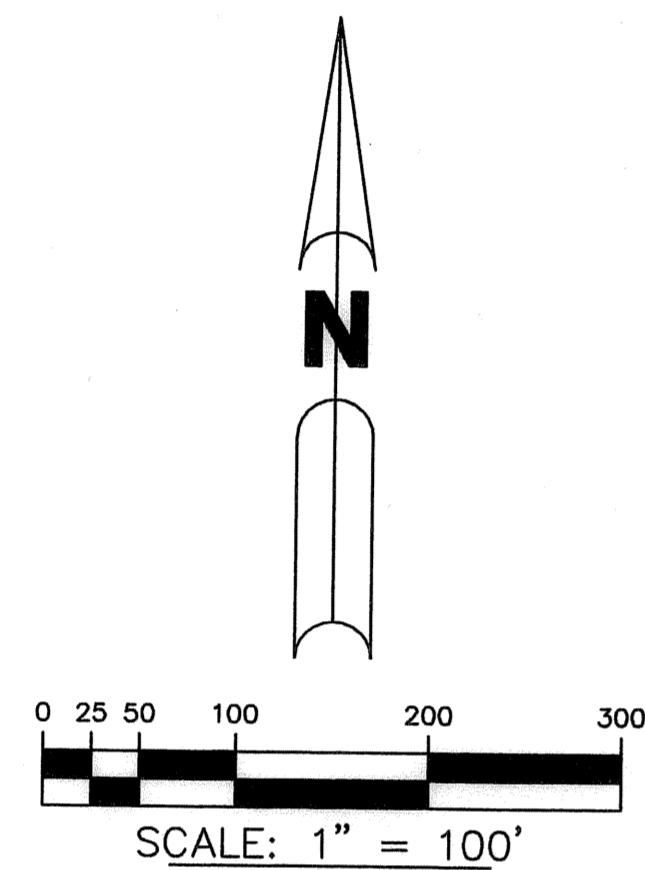
177

LOGGERS' RUN DISTRICT PARK "E"

A REPLAT OF TRACTS 54, 55 AND 56, SECTION 23, TOWNSHIP 47 SOUTH, RANGE 41 EAST, FLORIDA FRUIT LANDS COMPANY'S SUBDIVISION No.2, RECORDED IN PLAT BOOK 1, PAGE 102; AND TRACT P, BOCA WOODS COUNTRY CLUB PLAT 4, RECORDED IN PLAT BOOK 48, PAGE 16, OF THE PUBLIC RECORDS OF PALM BEACH COUNTY, FLORIDA, LYING IN SECTIONS 23 AND 24, TOWNSHIP 47 SOUTH, RANGE 41 EAST, PALM BEACH COUNTY, FLORIDA

JANUARY 2004

SHEET 2 OF 3



SECTION CORNER POSITION CALCULATED PER RECORD PLATS AND HELD FOR THIS PLAT

SOUTH LINE OF SECTION 23
 N733328.317
 E911921.595

N733328.275
 E911921.947
 FOUND PALM BEACH COUNTY BRASS DISK

- ABBREVIATIONS**
- P.O.B. - POINT OF BEGINNING
 - P.O.C. - POINT OF COMMENCEMENT
 - P.B. - PLAT BOOK
 - O.R.B. - OFFICIAL RECORD BOOK
 - D.B. - DEED BOOK
 - (P) - PLAT BEARING OR DISTANCE
 - (M) - MEASURED BEARING OR DISTANCE
 - (C) - CALCULATED BEARING OR DISTANCE
 - (D) - DEEDED BEARING OR DISTANCE
 - (G) - GRID BEARING OR DISTANCE
 - R - RADIUS
 - Δ - CENTRAL ANGLE
 - Δ - ARC LENGTH
 - C.M. - 4"x4" CONCRETE MONUMENT
 - PRM - PERMANENT REFERENCE MONUMENT
 - U.E. - UTILITY EASEMENT
 - R/W - RIGHT-OF-WAY
 - C - CENTERLINE
 - IN-EG - INGRESS-EGRESS
 - SEC. - SECTION
 - PG. - PAGE
 - P.I. - POINT OF INTERSECTION
 - F.P.L. - FLORIDA POWER & LIGHT COMPANY
 - L.A.E. - LIMITED ACCESS EASEMENT
 - F.S. - FLORIDA STATUTES
 - NXXXXXX.XXX - NORTHING STATE PLANE COORDINATE
 - EXXXXXX.XXX - EASTING STATE PLANE COORDINATE

SUBDIVISION **Loggers' Run Dist Park E**
 BOOK 101 PAGE 177
 FLOOD ZONE B FLOOD MAP # 100 B
 QUAD # 09 ZONING PD/SZ
 SE R-00-5714 ZIP CODE 33428
 TAZ 10 45
 FUD NAME

BROWN & PHILLIPS, INC.
 PROFESSIONAL SURVEYING SERVICES
 CERTIFICATE OF AUTHORIZATION # LB 6473

THIS INSTRUMENT PREPARED BY:
 JOHN E. PHILLIPS, III
 PROFESSIONAL SURVEYOR & MAPPER
 3969 N. HAVERHILL RD. SUITE 105
 WEST PALM BEACH, FLORIDA 33417
 LICENSE No. 4826
 STATE OF FLORIDA

LOGGERS' RUN DISTRICT PARK "E"

DRAWN: MDB	PROJ. NO. 99-066
CHECKED: JEP/III	SCALE: 1"=100'
FIELD BOOK:	DATE: 10/10/03
PAGES:	SHEET 2 OF 3

3969 N. HAVERHILL RD, SUITE 105, WEST PALM BEACH, FLORIDA 33417 561-615-3988, 615-3986 FAX