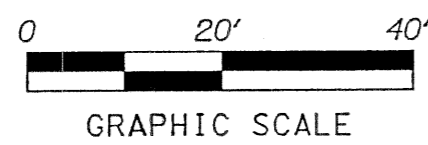
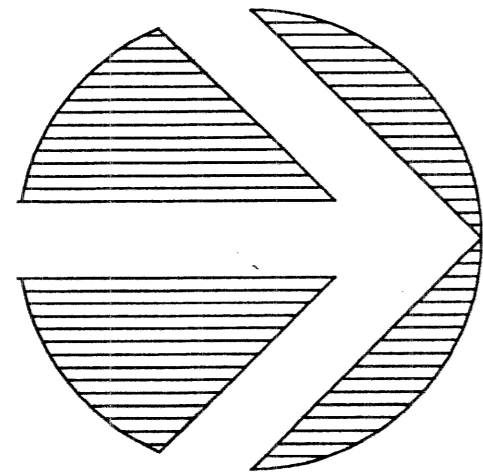


PERIMETER

SURVEYING & MAPPING
 Prepared by: Jeff S. Hodapp, P.S.M.
 Certificate of Authorization No. LB7264
 951 Broken Sound Parkway, Suite 108
 Boca Raton, Florida 33487
 Tel. (561) 241-9988
 Fax: (561) 241-5182



COURTYARDS OF LAKE WORTH

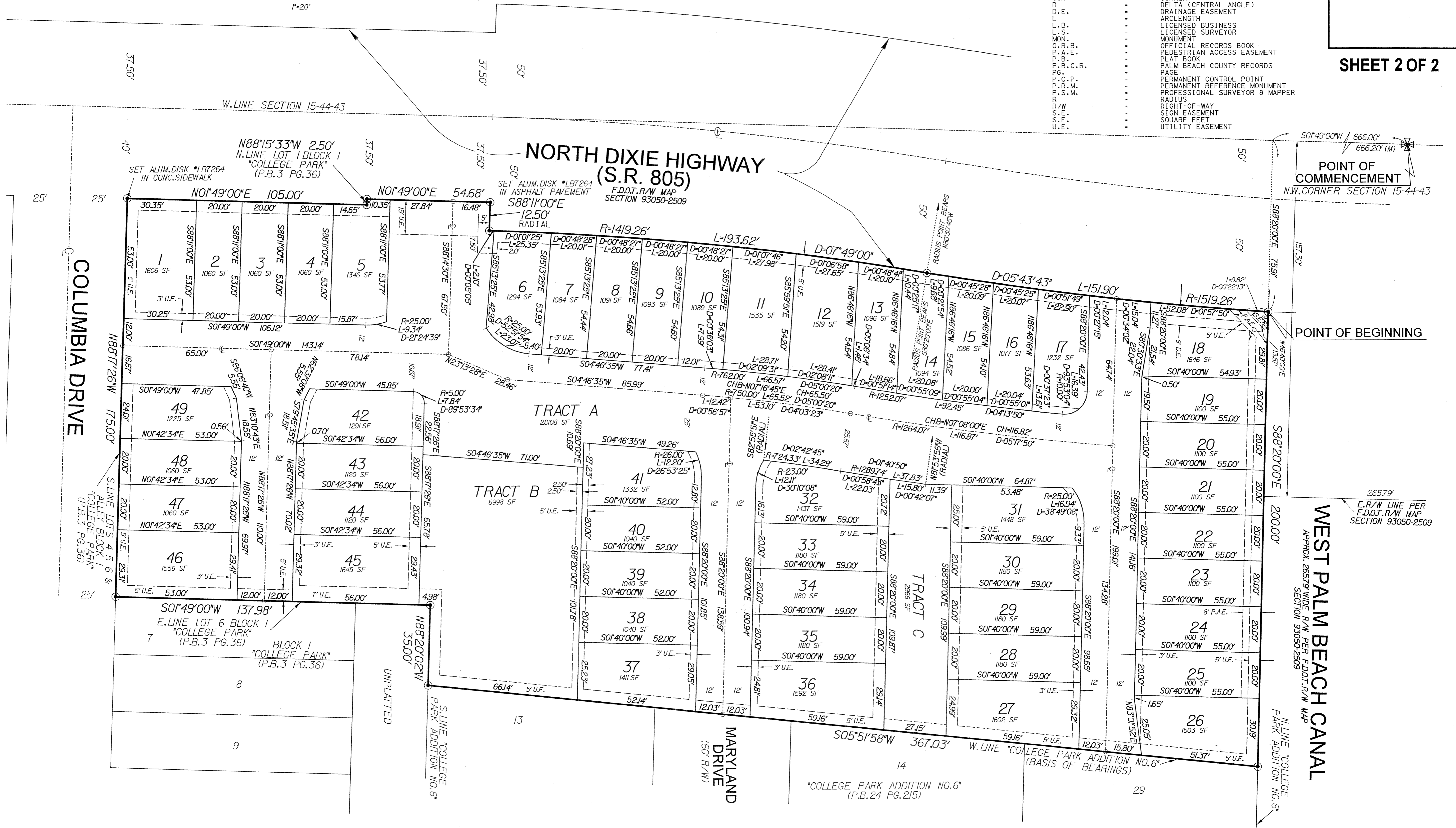
A REPLAT OF A PORTION OF LOTS 1, 2, 3 AND 4, AND ALL OF LOTS 5 AND 6, BLOCK 1, AND THE PLATTED ALLEY ADJACENT TO SAID LOTS 1 THROUGH 4 AND 5, "COLLEGE PARK" (P.B. 3, PG. 36, P.B.C.R.), TOGETHER WITH A PORTION OF THE NORTHWEST ONE-QUARTER OF SECTION 15, TOWNSHIP 44 SOUTH, RANGE 43, EAST, CITY OF LAKE WORTH, PALM BEACH COUNTY, FLORIDA.
 JANUARY 2004

154

SHEET 2 OF 2

LEGEND:

- PERMANENT CONTROL POINT
 - PERMANENT REFERENCE MONUMENT
 - PROFESSIONAL SURVEYOR & MAPPER
 - RADIUS
 - RIGHT-OF-WAY
 - SIGN EASEMENT
 - SQUARE FEET
 - UTILITY EASEMENT
- ABBREVIATIONS:
- AC. ACRES
 - CH. CHORD BEARING
 - CONC. CONCRETE
 - COR. CORNER
 - D. DELTA (CENTRAL ANGLE)
 - D.E. DRAINAGE EASEMENT
 - L. ARCLength
 - L.B. LICENSED BUSINESS
 - L.S. LICENSED SURVEYOR
 - MON. MONUMENT
 - O.R.B. OFFICIAL RECORDS BOOK
 - P.A.E. PEDESTRIAN ACCESS EASEMENT
 - P.B. PLAT BOOK
 - P.B.C.R. PALM BEACH COUNTY RECORDS
 - P.C.P. PERMANENT CONTROL POINT
 - P.R.M. PERMANENT REFERENCE MONUMENT
 - P.S.M. PROFESSIONAL SURVEYOR & MAPPER
 - R. RADIUS
 - R.O.W. RIGHT-OF-WAY
 - S.E. SIGN EASEMENT
 - S.F. SQUARE FEET
 - U.E. UTILITY EASEMENT



APPROX. 265.79' WIDE R/W PER F.D.O.T. R/W MAP SECTION 93050-2509

WEST PALM BEACH CANAL

W.LINE "COLLEGE PARK ADDITION NO. 6" (BASIS OF BEARINGS)

MARYLAND DRIVE (60' R/W)

COLUMBIA DRIVE

NORTH DIXIE HIGHWAY (S.R. 805)

TRACT A

TRACT B

TRACT C

N88°15'33"W 2.50' N.LINE LOT 1 BLOCK 1 "COLLEGE PARK" (P.B.3 PG.36)

S.O.I. 49°00'W 137.98' E.LINE LOT 6 BLOCK 1 "COLLEGE PARK" (P.B.3 PG.36)

POINT OF COMMENCEMENT N.W. CORNER SECTION 15-44-43

POINT OF BEGINNING

S.LINE LOTS 4, 5, 6 & ALLEY BLOCK 1 "COLLEGE PARK" (P.B.3 PG.36)

BLOCK 1 "COLLEGE PARK" (P.B.3 PG.36)

S.LINE "COLLEGE PARK ADDITION NO. 6"

N.LINE "COLLEGE PARK ADDITION NO. 6"