

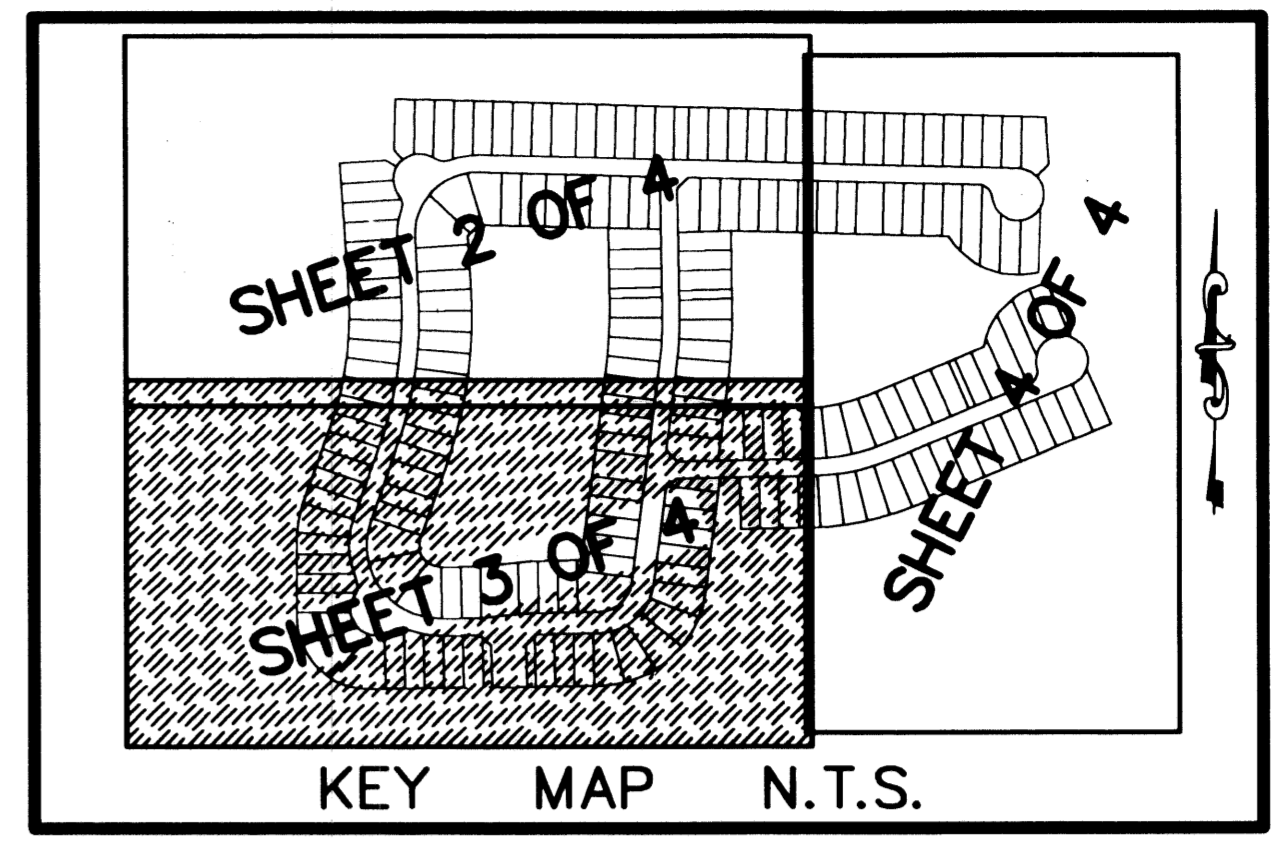
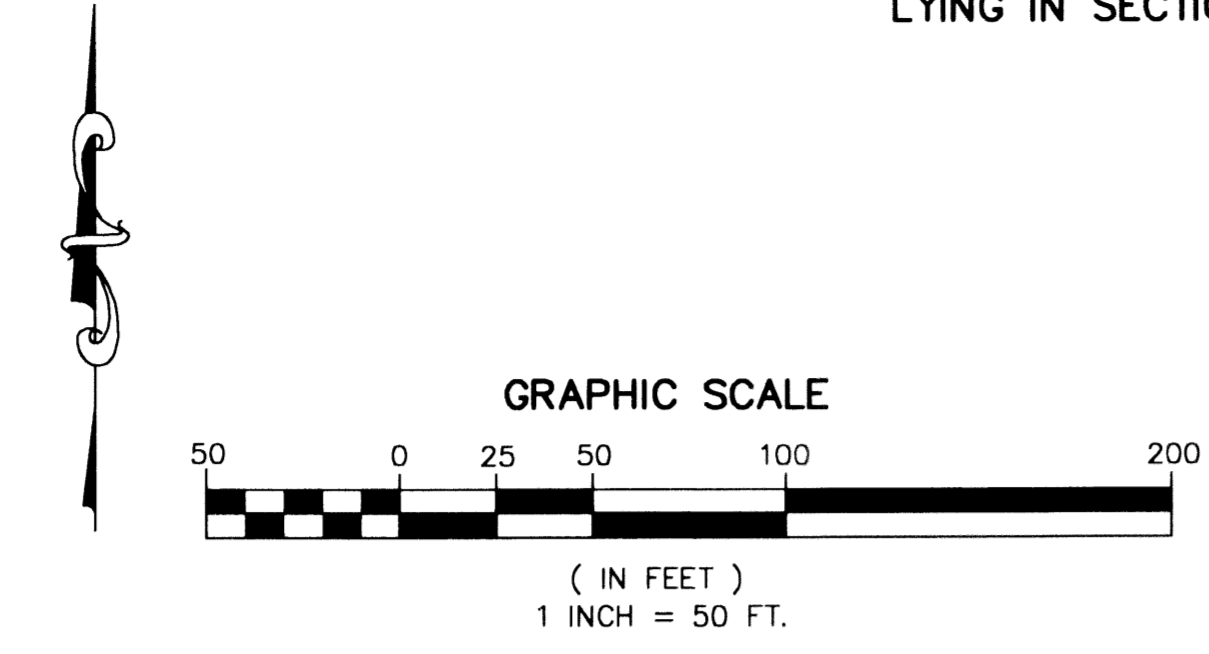
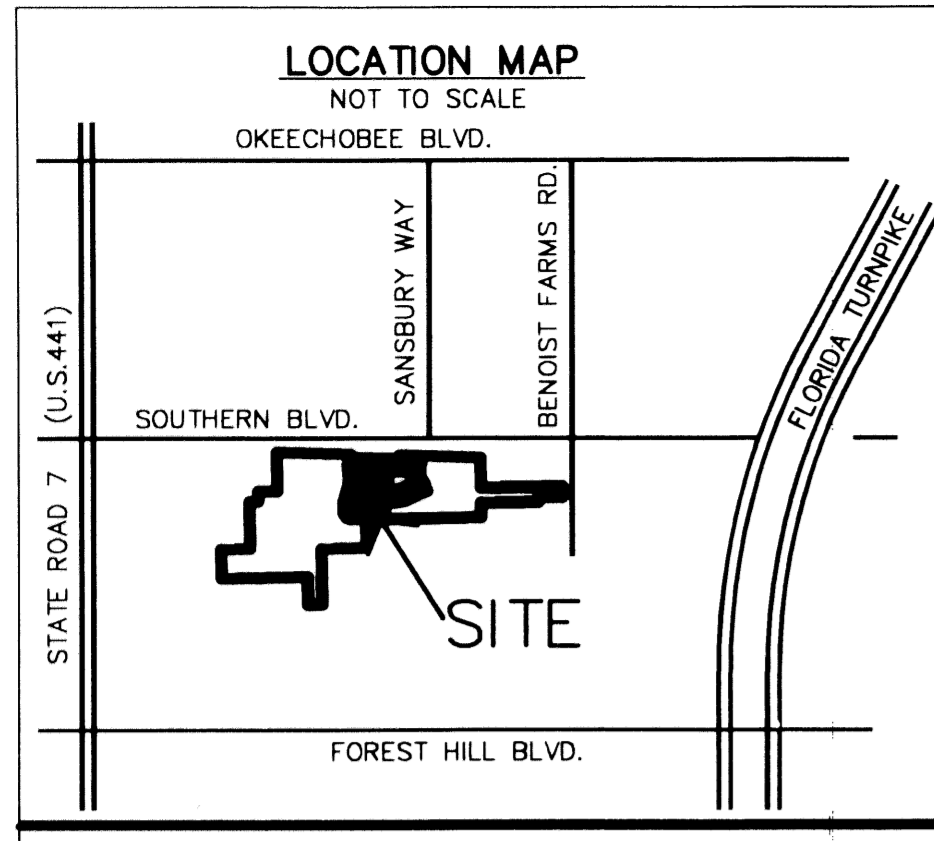
146

DIAMOND "C" RANCH POD E/F REPLAT

A PLANNED UNIT DEVELOPMENT BEING A PART OF DIAMOND "C" RANCH PUD, BEING A REPLAT OF POD E/F, DIAMOND "C" RANCH, AS RECORDED IN PLAT BOOK 99, PAGES 173 THROUGH 179 OF THE PUBLIC RECORDS OF PALM BEACH COUNTY, FLORIDA LYING IN SECTION 6, TOWNSHIP 44 SOUTH, RANGE 42 EAST, PALM BEACH COUNTY, FLORIDA

THIS INSTRUMENT PREPARED BY DAVID P. LINDLEY OF

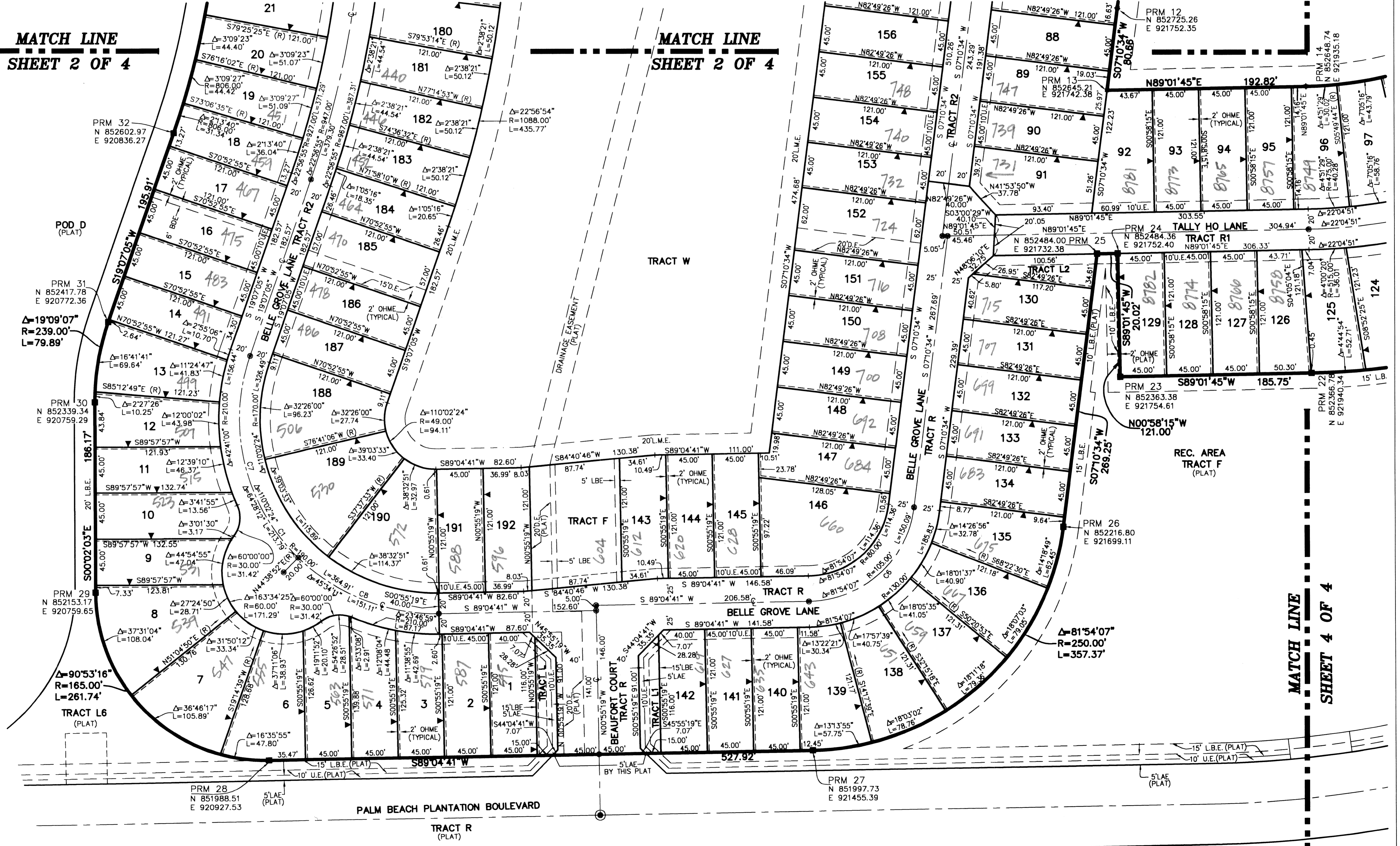
CAULFIELD and WHEELER, INC.
SURVEYORS - ENGINEERS - PLANNERS
7301-A WEST PALMETTO PARK ROAD, SUITE 100A
BOCA RATON, FLORIDA 33433 - (561)392-1991
SEPTEMBER - 2002



STATE OF FLORIDA
COUNTY OF PALM BEACH
THIS PLAT WAS FILED FOR
RECORD AT _____ M.
THIS _____ DAY OF _____
A.D. 2004 AND DULY RECORDED
IN PLAT BOOK _____
PAGES _____ AND _____
DOROTHY H. MILKEN
CLERK CIRCUIT COURT
BY: _____
DEPUTY CLERK

SHEET 3 OF 4

| CURVE | CHORD BEARING | CHORD DISTANCE |
|-------|---------------|----------------|
| C1 | S35°54'07"E | 311.35' |
| C2 | N07°38'38"E | 376.77' |
| C3 | S43°49'35"W | 243.91' |
| C4 | N03°06'23"E | 140.52' |
| C5 | N77°59'20"E | 189.59' |
| C6 | N48°07'38"E | 137.64' |
| C7 | S13°07'01"E | 202.69' |
| C8 | S68°08'13"E | 147.16' |
| C9 | S20°00'01"W | 133.33' |
| C10 | S67°39'26"W | 133.31' |



SUBMISSION DIAMOND "C" RANCH POD E/F REPLAT
PAGE 146
FLOOD MAP # 100 Δ
ZONING PD
QUAD # 47
SE
TAZ 799.009
PUD NAME DIAMOND "C" RANCH