

**CARNAHAN · PROCTOR · CROSS, INC.**

CONSULTING ENGINEERS · SURVEYORS · PLANNERS

6101 WEST ATLANTIC BOULEVARD, MARGATE, FLORIDA 33063  
PHONE: 954-972-3959 FAX: 954-972-4178

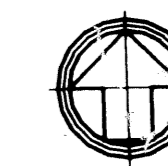
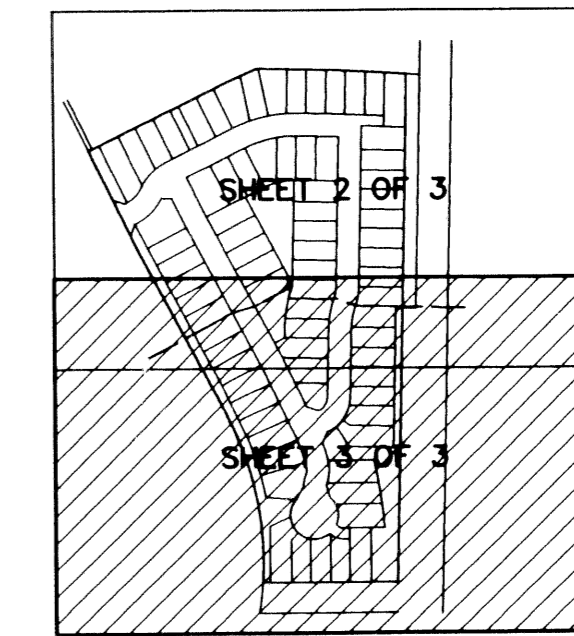
SEPTEMBER 2003

990901-5

JJM

# EVERGRENE P.C.D. PLAT NINE

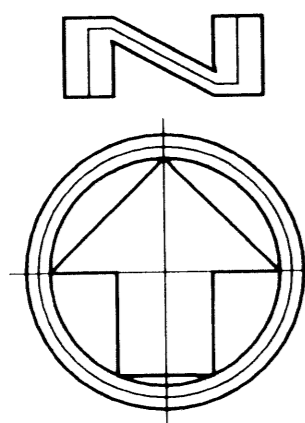
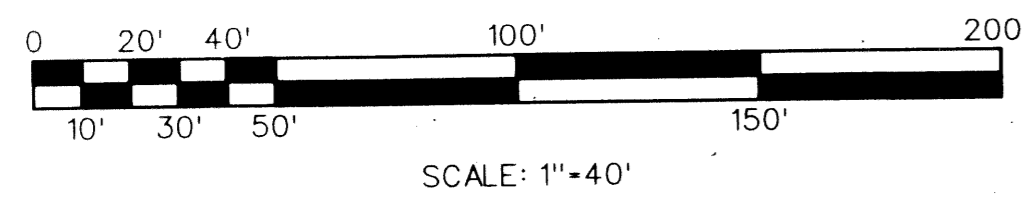
A REPLAT OF TRACT F-5, "EVERGRENE PLAT TWO" AS RECORDED IN PLAT BOOK 95 AT PAGES 29 THROUGH 54 OF THE PUBLIC RECORDS OF PALM BEACH COUNTY, FLORIDA IN SECTION 25, TOWNSHIP 41 SOUTH, RANGE 42 EAST CITY OF PALM BEACH GARDENS, PALM BEACH COUNTY, FLORIDA



126

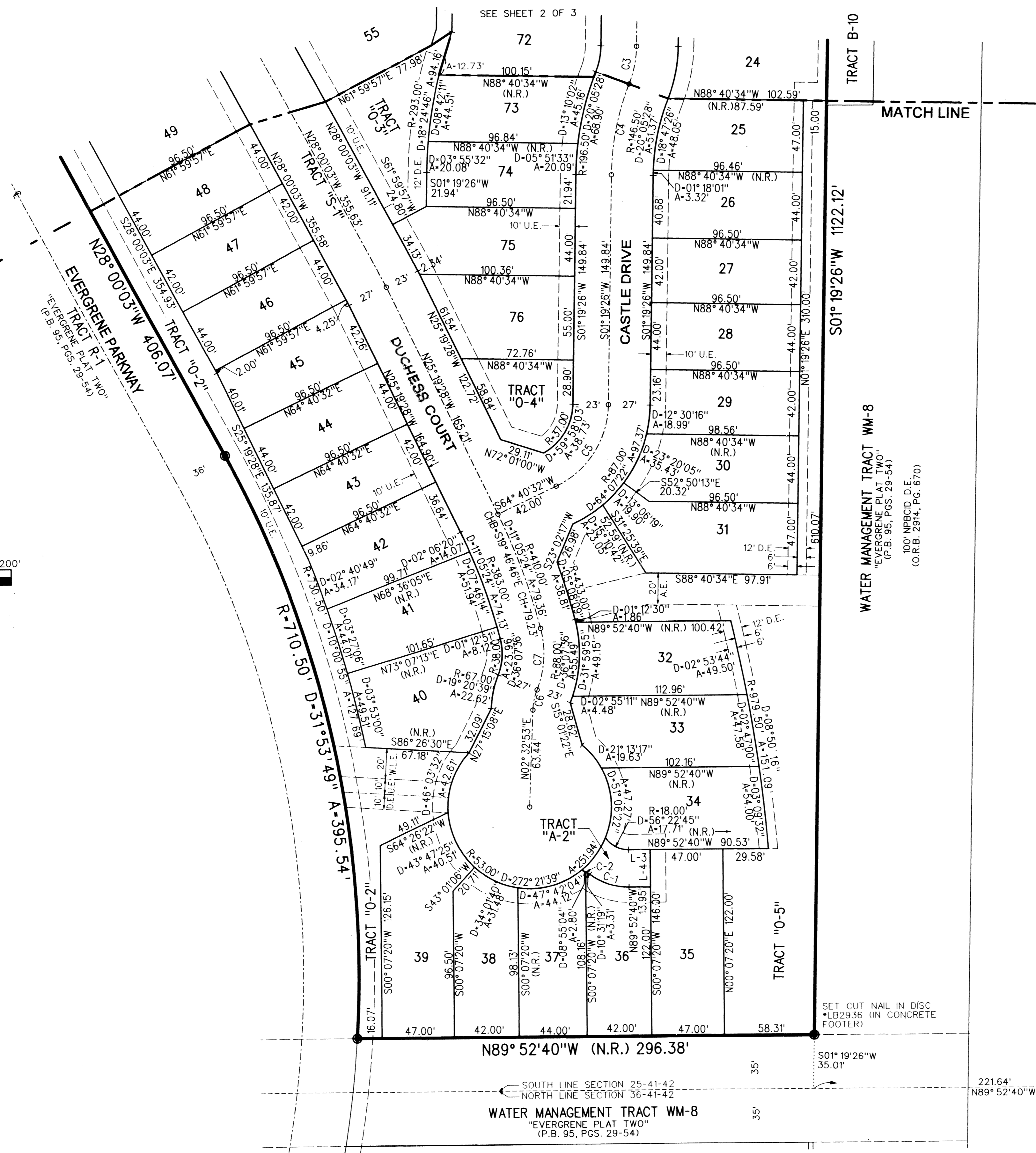
KEY MAP  
NOT TO SCALE

SHEET 3 OF 3



**LEGEND**

- SET PERMANENT REFERENCE MONUMENT (P.R.M.) - 4" DIAMETER CONCRETE MONUMENT W/ CAP #LB2936 UNLESS OTHERWISE NOTED
- FOUND 4"x4" CONCRETE MONUMENT W/CAP #LB 4897
- PERMANENT CONTROL POINT
- ⊙ CENTERLINE
- A ARC LENGTH
- A.E. ACCESS EASEMENT
- CH CHORD
- CHB CHORD BEARING
- D DELTA (CENTRAL ANGLE)
- D.E. DRAINAGE EASEMENT
- NPBCID NORTHERN PALM BEACH COUNTY IMPROVEMENT DISTRICT
- N.R. NON-RADIAL
- O.R.B. OFFICIAL RECORDS BOOK
- P.C.D. PLANNED COMMUNITY DEVELOPMENT
- PG. PAGE
- P.B. PLAT BOOK
- R RADIUS
- SF SQUARE FEET
- U.E. UTILITY EASEMENT
- WMAE WATER MANAGEMENT ACCESS EASEMENT
- W.M.M.E. WATER MANAGEMENT MAINTENANCE EASEMENT



**NORTHERN PALM BEACH COUNTY IMPROVEMENT DISTRICT LAND USE ACREAGE AND CLASSIFICATION TABLE**

TRACT NAME	SQUARE FEET	ACRES	CLASSIFICATION
LOTS 1-76	228,816	5.253	SFC (SINGLE FAMILY CLASSICS)
TRACT "A-1" & "A-2"	2,100	0.048	EX (EXEMPT ACREAGE)
TRACT "O-1" - "O-6"	70,467	1.618	EX (EXEMPT ACREAGE)
TRACT "S-1"	224,483	5.153	EX (EXEMPT ACREAGE)
TOTAL	525,866	12.072	

**CURVE TABLE**

	RADIUS	CENTRAL ANGLE	ARC LENGTH	CHORD BEARING	CHORD
C1	R-42.00'	D-36° 56' 23"	A-27.08'		
C2	R-18.00'	D-19° 26' 23"	A-6.11'		
C3	R-73.00'	D-20° 05' 28"	A-25.60'	CHB-S11° 22' 10" W	CH-25.47'
C4	R-173.50'	D-20° 05' 28"	A-60.84'	CHB-S11° 22' 10" W	CH-60.53'
C5	R-60.00'	D-63° 21' 06"	A-66.34'	CHB-S32° 59' 59" W	CH-63.01'
C6	R-40.00'	D-19° 20' 39"	A-13.50'	CHB-N12° 13' 12" E	CH-13.44'
C7	R-65.00'	D-36° 07' 36"	A-40.98'	CHB-N03° 49' 44" E	CH-40.31'

**LINE TABLE**

	BEARING	DISTANCE
L-1	N63° 53' 55" E	19.32'
L-2	S87° 27' 58" E	49.51'
L-3	N89° 52' 40" W	13.95'
L-4	S00° 07' 20" W	24.00'
L-5	S71° 24' 04" E	28.43'
L-6	S18° 46' 22" W	28.22'

FILE: r:\990901-5\cadd\w0\pp3.dgn  
DATE: 27-Jan-04 10:06