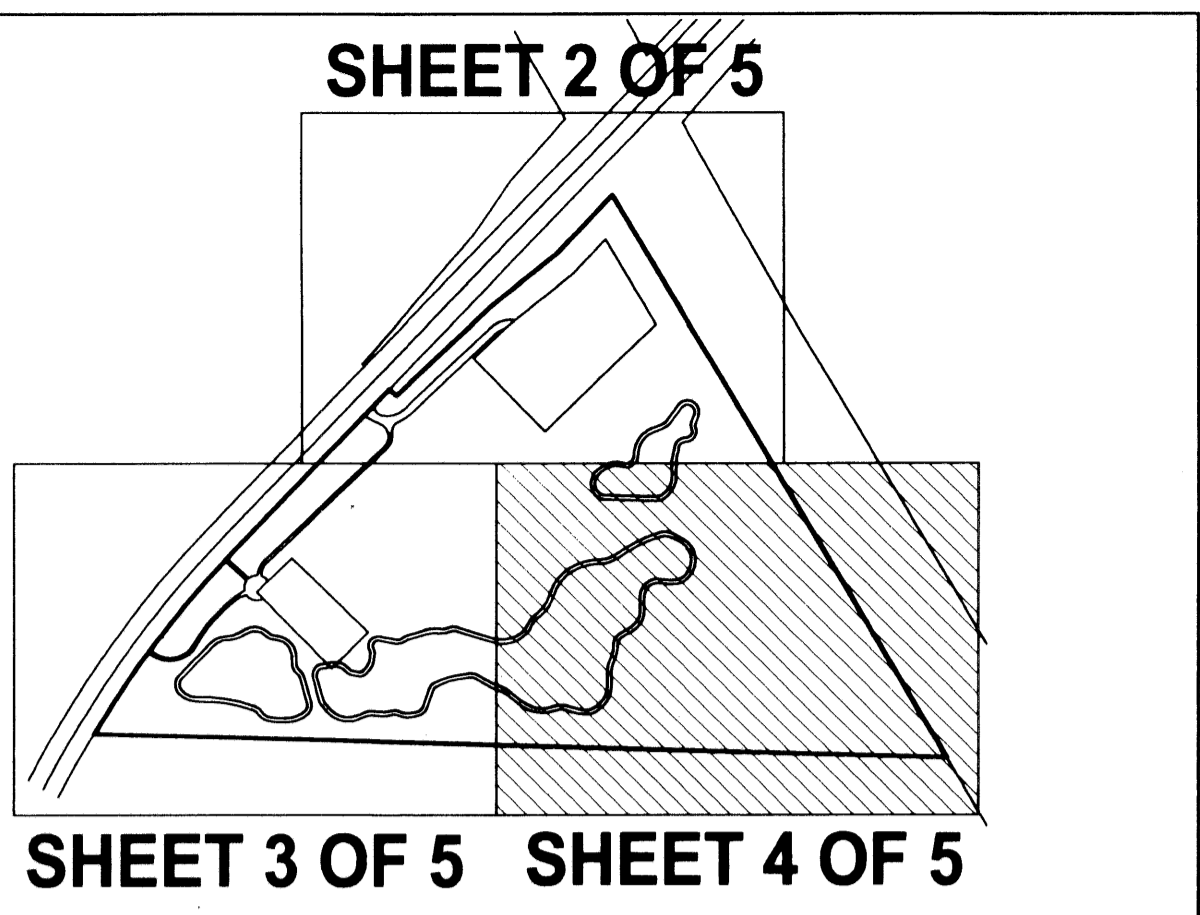
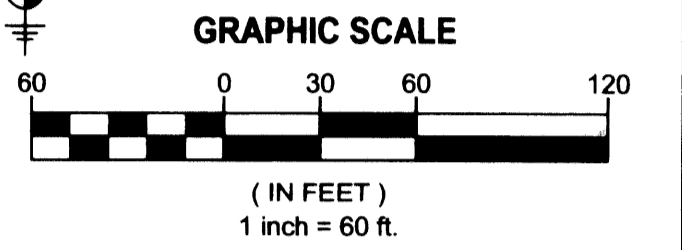


OLD PALM EAST

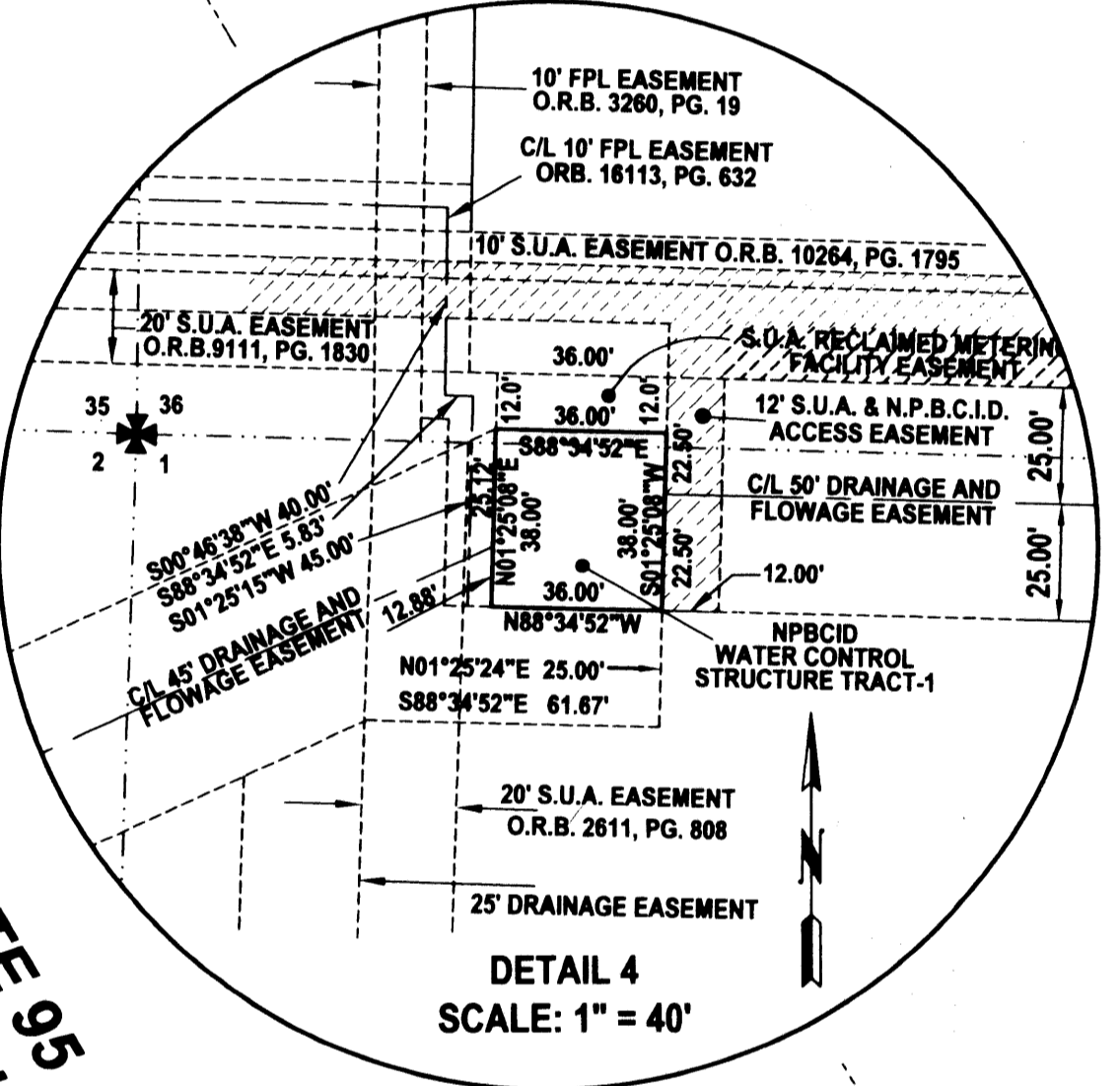
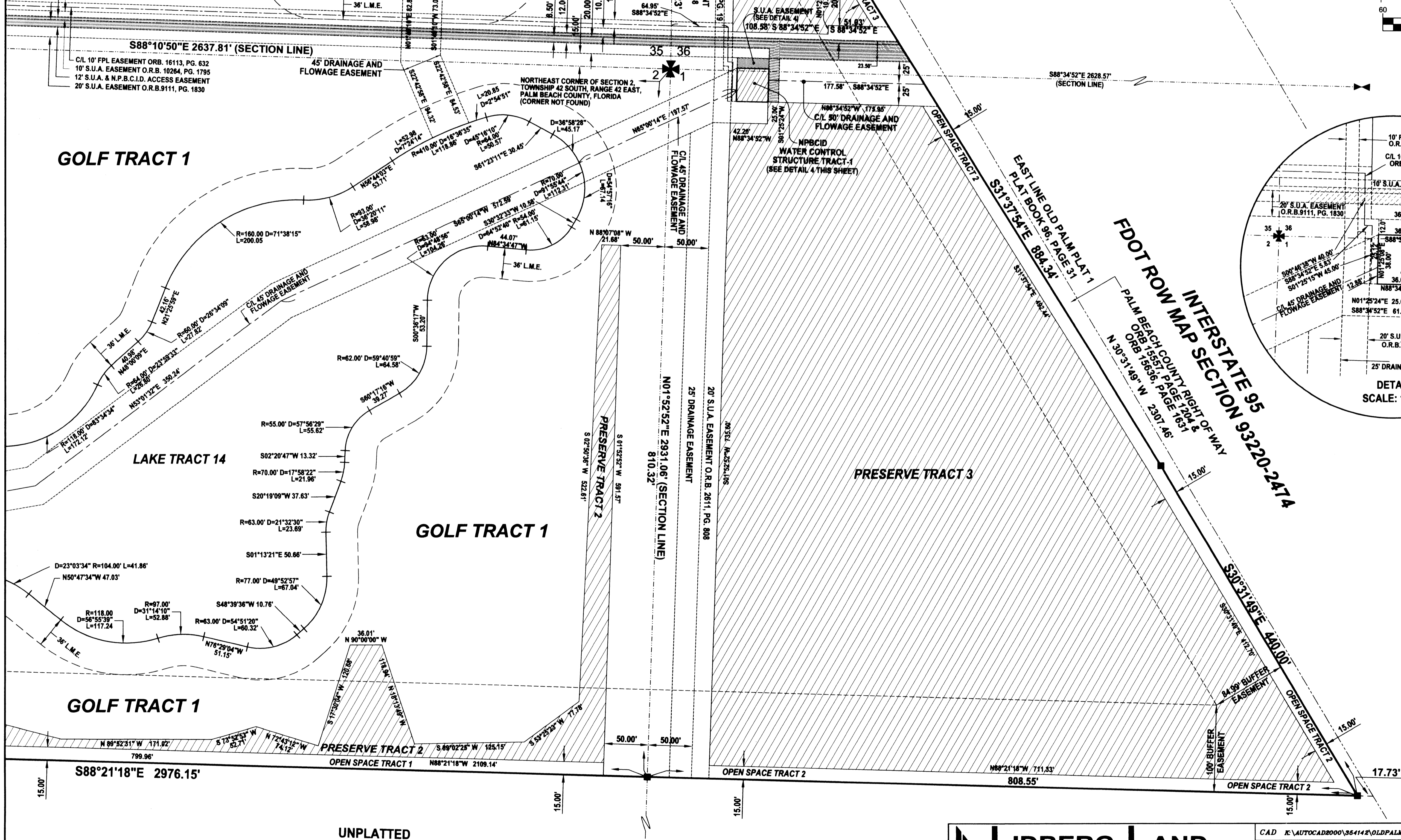
BEING A REPLAT OF A PORTION OF PARCEL 2, OLD PALM PLAT 1, AS RECORDED IN PLAT BOOK 96, PAGES 31 THROUGH 34, PUBLIC RECORDS OF PALM BEACH COUNTY, FLORIDA LYING IN SECTIONS 35 AND 36, TOWNSHIP 41 SOUTH, RANGE 42 EAST AND SECTIONS 1 AND 2, TOWNSHIP 42 SOUTH, RANGE 42 EAST CITY OF PALM BEACH GARDENS, PALM BEACH COUNTY, FLORIDA
SHEET 4 OF 5 MARCH 2004

117

STATE OF FLORIDA
COUNTY OF PALM BEACH
This plat was filed for record at _____ M. this day of _____, 2004 and duly recorded in Plat Book No. _____ on Pages _____ thru _____
DOROTHY H. WILKEN
Clerk Circuit Court
By _____ D.C.



KEY MAP



MATCH LINE SHEET 3

MATCH LINE SHEET 2

UNPLATTED

SOUTHEAST CORNER OF THE NORTHEAST QUARTER OF SECTION 2, TOWNSHIP 42 SOUTH, RANGE 42 EAST, PALM BEACH COUNTY, FLORIDA (FOUND P.B.C. BRASS DISK IN CONCRETE)

LIDBERG LAND SURVEYING, Inc.
 LB 4431 675 West Indiantown Road, Suite 200, Jupiter, Florida 33458 TEL. 561-746-8454

CAD R:\AUTOCAD\2000\354142\OLDPALMEAST\03-081\DWG\30-081-306.DWG			
REF			
FLD	FB.	PG.	JOB 03-081 (306)
OFF	S.F.B.		DATE 06/01/03
CKD	D.C.L.	SHEET 4 OF 5	DWG D03-081P