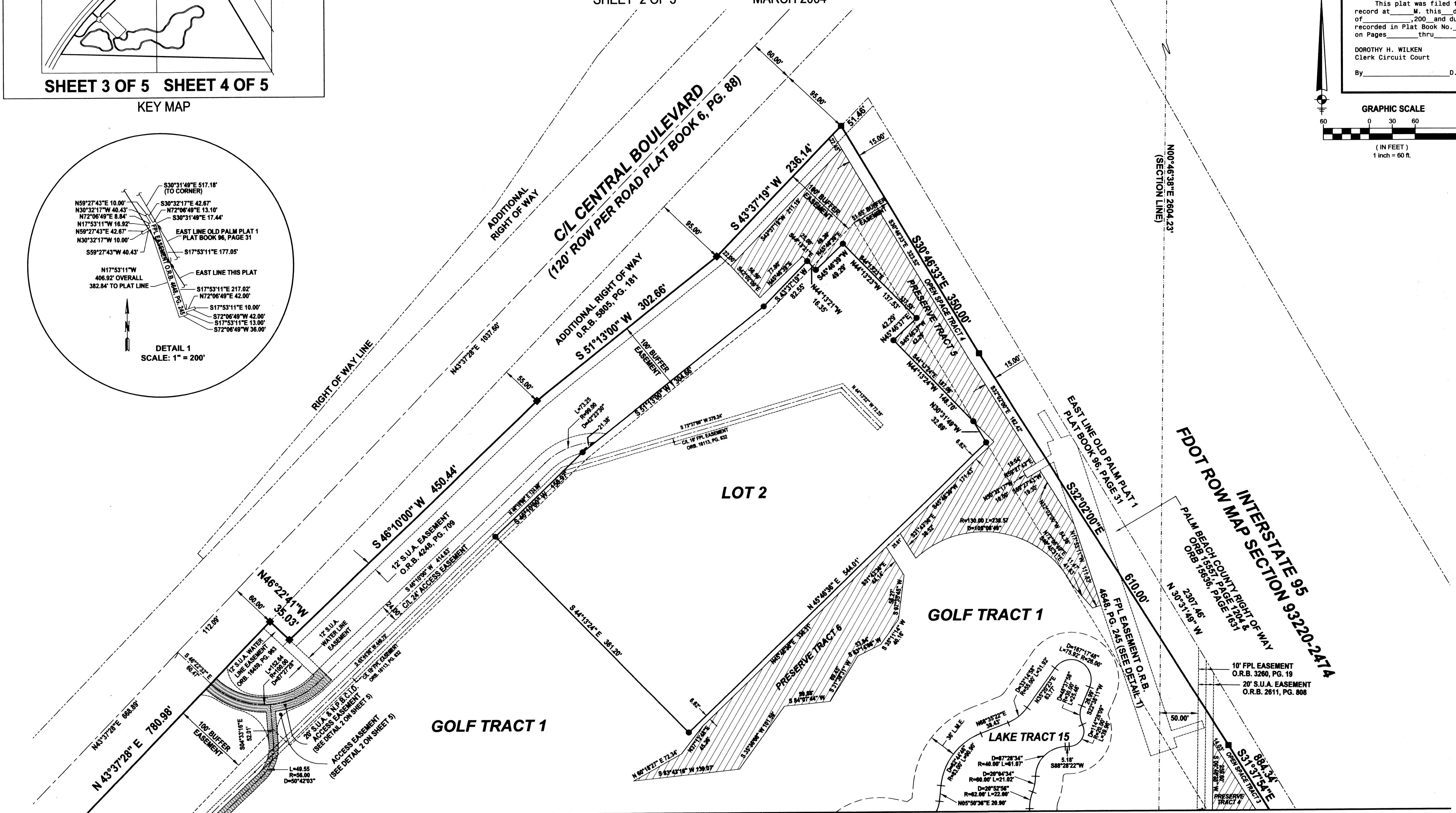
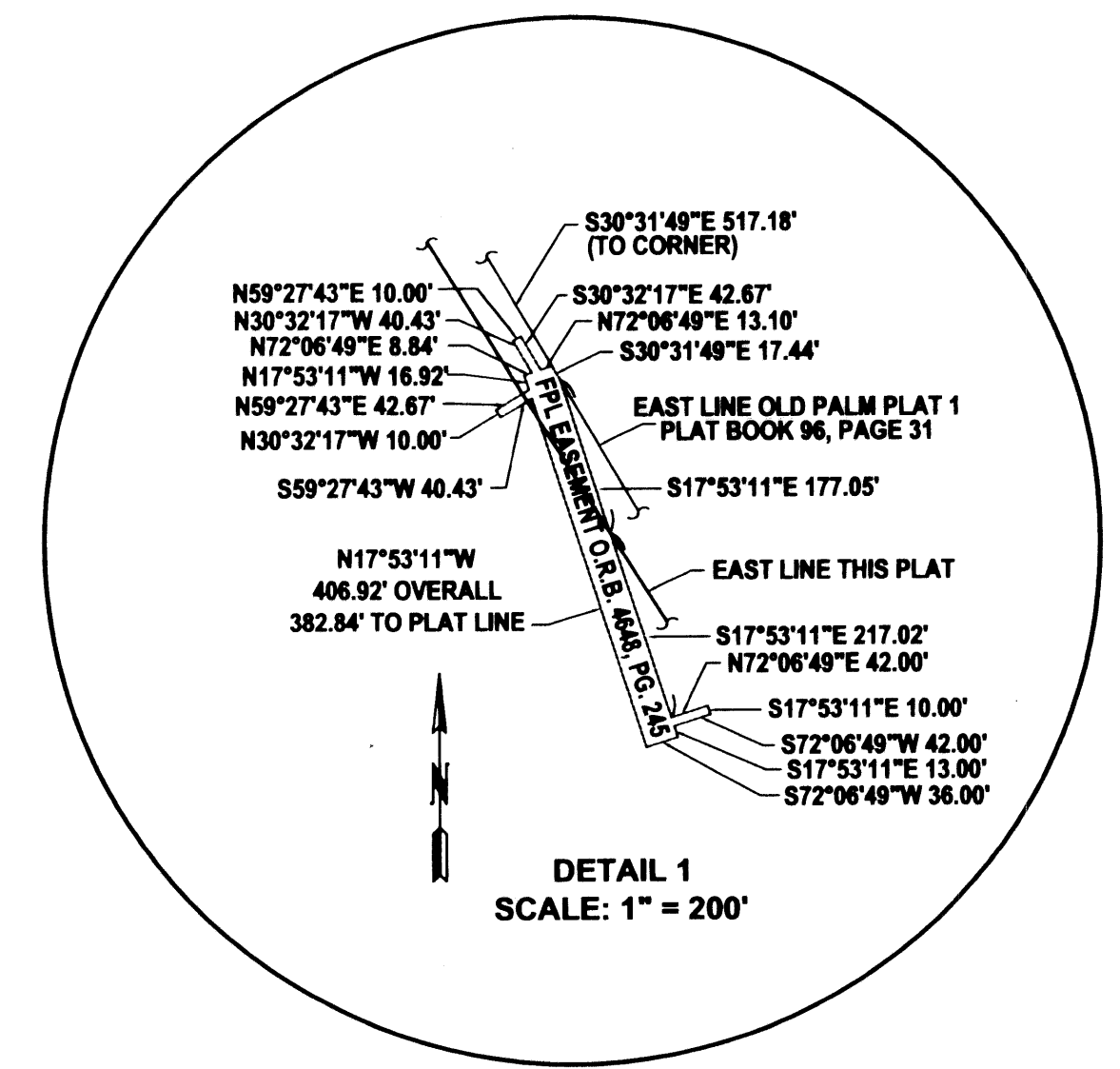
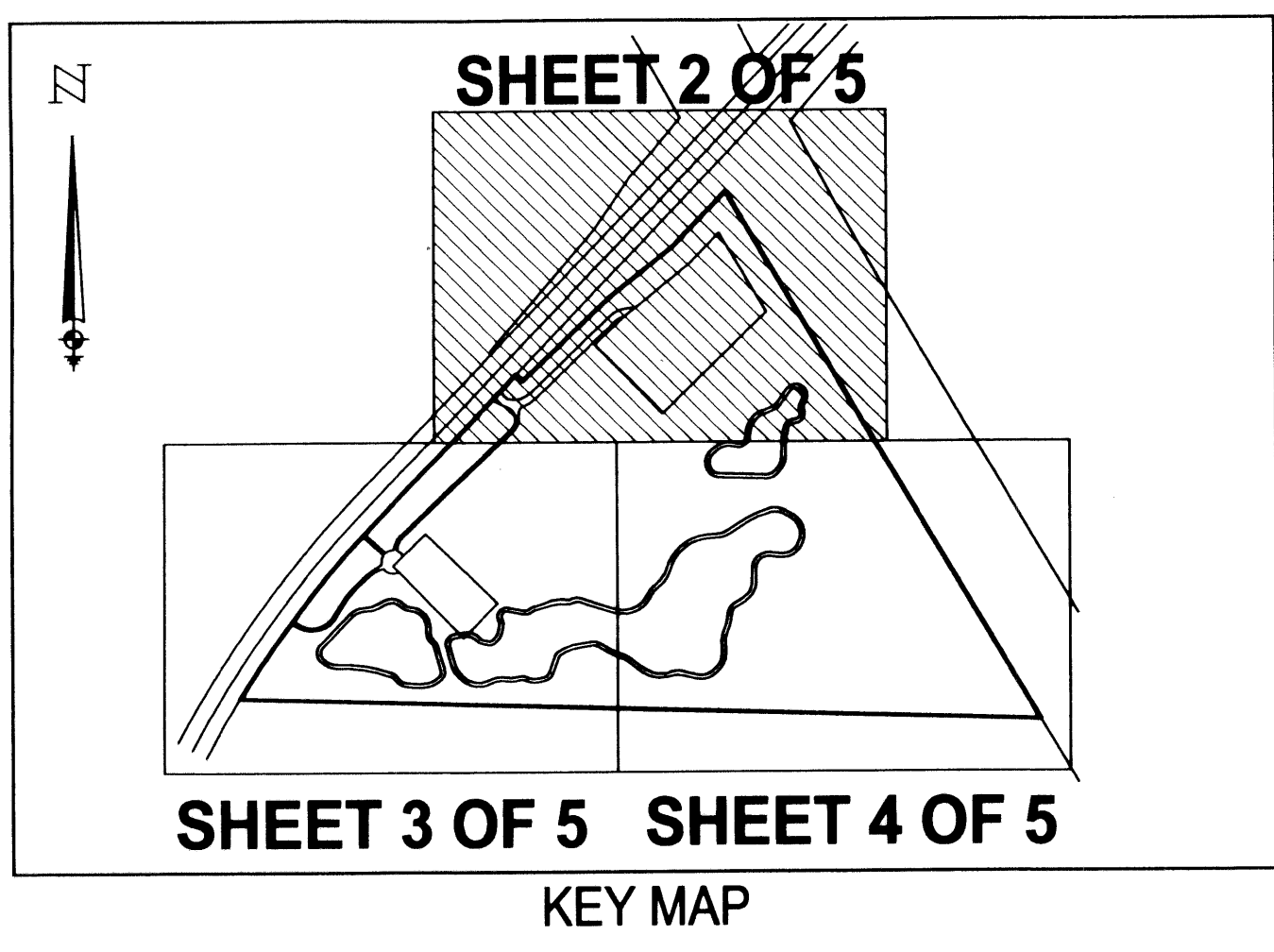
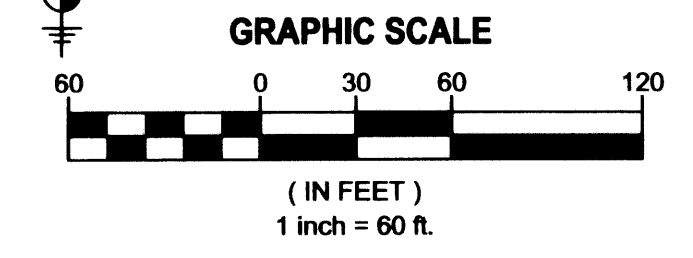


OLD PALM EAST

BEING A REPLAT OF A PORTION OF PARCEL 2, OLD PALM PLAT 1, AS RECORDED IN PLAT BOOK 96, PAGES 31 THROUGH 34, PUBLIC RECORDS OF PALM BEACH COUNTY, FLORIDA LYING IN SECTIONS 35 AND 36, TOWNSHIP 41 SOUTH, RANGE 42 EAST AND SECTIONS 1 AND 2, TOWNSHIP 42 SOUTH, RANGE 42 EAST CITY OF PALM BEACH GARDENS, PALM BEACH COUNTY, FLORIDA SHEET 2 OF 5 MARCH 2004

NORTHEAST CORNER OF THE SOUTHWEST QUARTER OF SECTION 35, TOWNSHIP 41 SOUTH, RANGE 42 EAST, PALM BEACH COUNTY, FLORIDA (FOUND P.B.C. BRASS DISK IN CONCRETE)

STATE OF FLORIDA
COUNTY OF PALM BEACH
This plat was filed for record at _____ M. this _____ day of _____, 2004 and duly recorded in Plat Book No. _____ on Pages _____ thru _____.
DOROTHY H. WILKEN
Clerk Circuit Court
By _____ D.C.



MATCH LINE SHEET 3

MATCH LINE SHEET 4

LIDBERG LAND SURVEYING, INC.
LB 4431 675 West Indianatown Road, Suite 200, Jupiter, Florida 33458 TEL 561-746-8454

CAD	E:\AUTOCAD\2000\354142\OLDPALMEAST\03-081\DWG\30-081-308.DWG		
REF			
FLD		FB.	PG.
OFF	S.F.B.		JOB 03-081 (306)
CKD	D.C.L.	SHEET 2 OF 5	DATE 06/01/03
			DWG D03-081P