

CARNAHAN PROCTOR CROSS, INC.

CONSULTING ENGINEERS - SURVEYORS - PLANNERS  
3931 RCA BOULEVARD, SUITE 3114, PALM BEACH GARDENS, FLORIDA, 33410  
PHONE: 561-789-5515 FAX: 561-789-5643

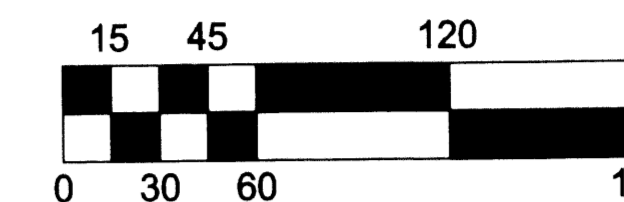
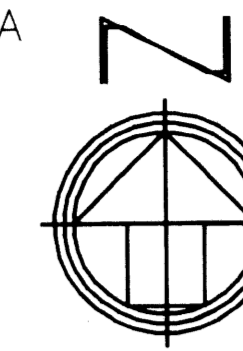
OCTOBER 2003

021107

DRL

# OSPREY ISLES, A P.U.D.

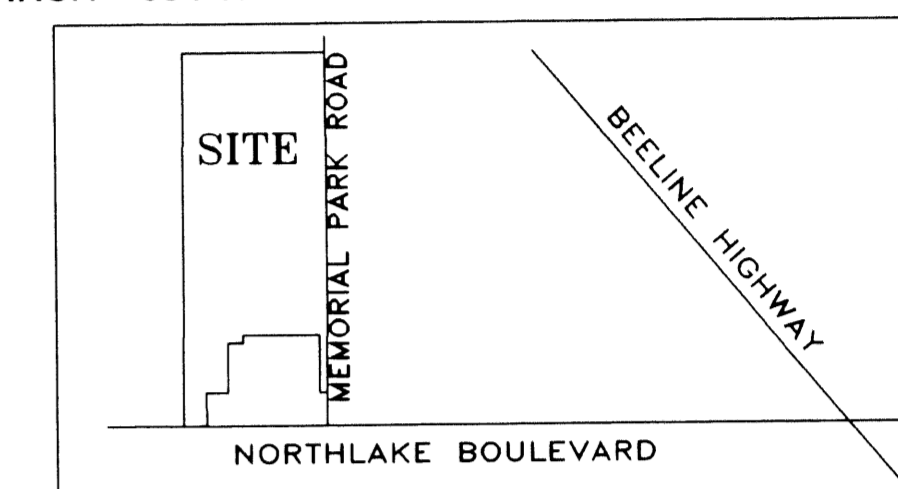
BEING A REPLAT OF A PORTION OF SHALOM MEMORIAL PARK, AS RECORDED IN PLAT BOOK 31, PAGE 194, PUBLIC RECORDS OF PALM BEACH COUNTY, FLORIDA, TOGETHER WITH A PORTION OF SECTION 14, TOWNSHIP 42 SOUTH, RANGE 41 EAST, PALM BEACH COUNTY, FLORIDA



(IN FEET)  
1 INCH = 60 FT.

SHEET 6 OF 6

UNPLATTED  
(UNINCORPORATED PALM BEACH COUNTY)



LOCATION MAP  
(NOT TO SCALE)

SHEET 6 OF 6

SHEET 5 OF 6

SHEET 4 OF 6

SHEET 3 OF 6

SHEET 2 OF 6

SHEET INDEX  
(NOT TO SCALE)

NORTH LINE OF SECTION 14,  
TOWNSHIP 42 SOUTH, RANGE 41 EAST

NORTH LINE OF SHALOM  
MEMORIAL PARK PLAT  
(PLAT BOOK 31, PAGE 194)

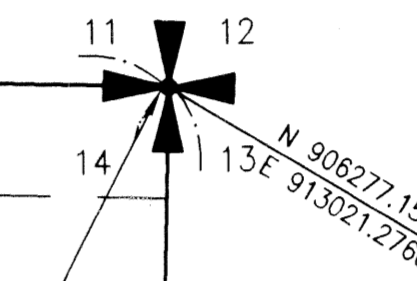
S88°26'41"E 1317.58'

SET 4"x4" CM  
LB# 2936

N 906372.9123  
E 811704.1384

35' DRAINAGE EASEMENT  
PER PLAT OF SHALOM  
MEMORIAL PARK  
(PLAT BOOK 31, PAGE 194)

P.O.B.  
NORTHEAST CORNER  
OF SECTION 14  
TOWNSHIP 42 SOUTH  
RANGE 41 EAST  
(FND. P.B. CO.  
BRASS DISK)



N 906372.1510  
E 913021.2780

OPEN SPACE  
TRACT "H"  
SUBJECT TO CONSERVATION EASEMENT  
O.R.B. 15304, PG.1686  
O.R.B. 14225, PGS. 459-493

UNPLATTED

WEST LINE OF THE EAST ONE-HALF  
OF THE EAST ONE-HALF OF SECTION 14,  
TOWNSHIP 42 SOUTH, RANGE 41 EAST

N01°50'04"E 4626.56'

N01°50'04"E 1055.53'

PRM TO PRM DISTANCE = 1326.00'

S01°28'43"W 4214.42'

EAST LINE OF SECTION 14,  
TOWNSHIP 42 SOUTH, RANGE 41 EAST

CARLETON OAKS  
(P.B. 92, PG. 145-154, P.B.C.R.)

SEE SHEET 5 OF 6

FILE: W:\Projects\021107\osprey\plat\SHI6.dwg  
DATE: 24-Dec-03

OSPREY ISLES  
DATE: 10/20/03  
DRAWN BY: TJB  
CHECKED BY: TJB  
SCALE: AS SHOWN  
PROJECT NO: 021107  
SHEET NO: 6 OF 6  
DATE: 10/20/03