

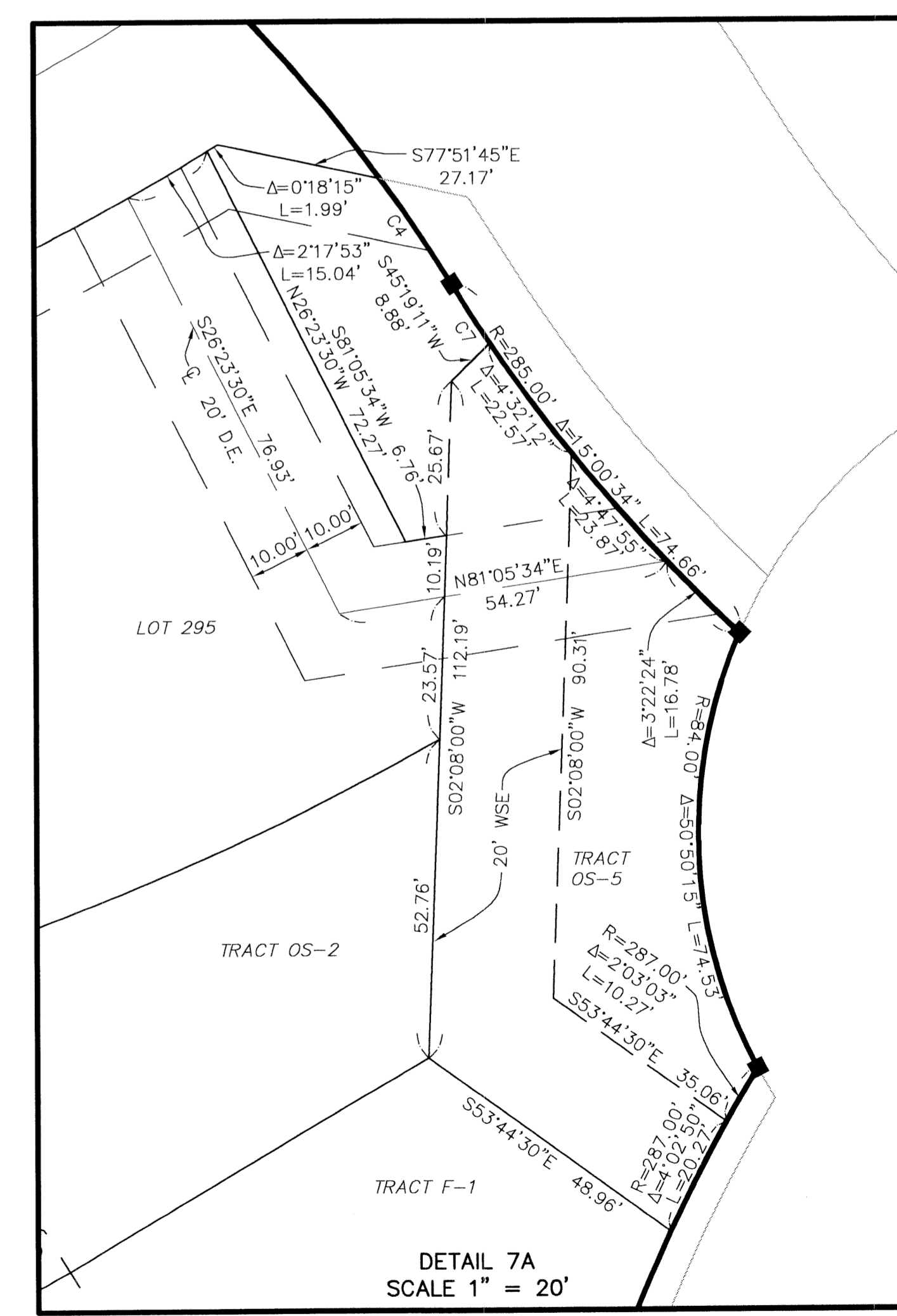
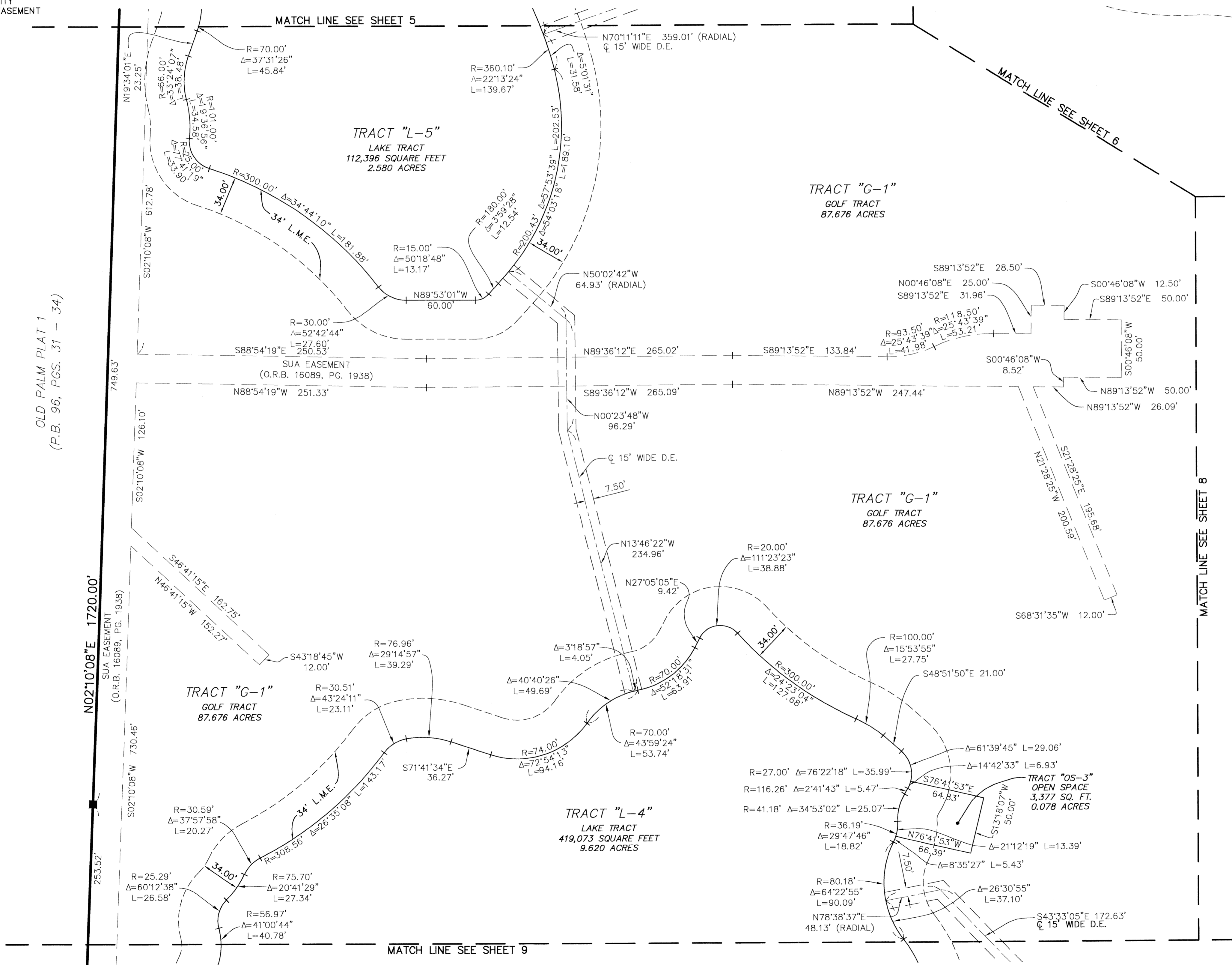
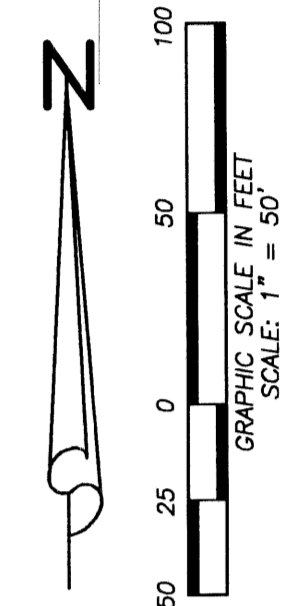
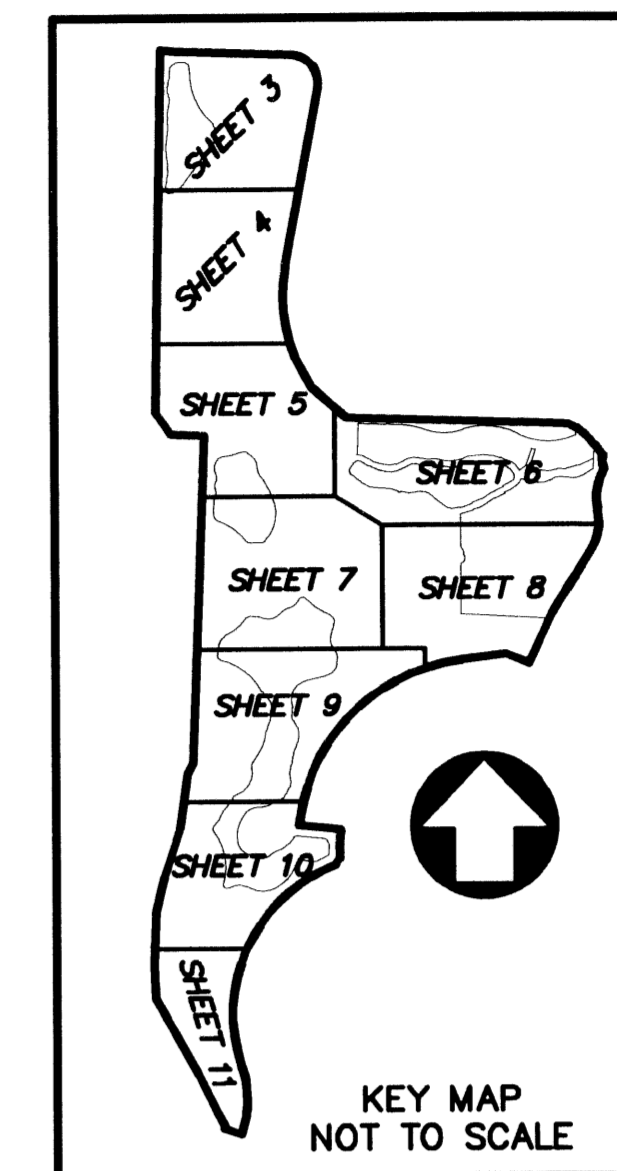
OLD PALM PLAT FIVE

A REPLAT OF A PORTION OF PARCEL 1, OLD PALM PLAT 1 AS RECORDED
 IN PLAT BOOK 96, PAGES 31 THROUGH 34, OF THE PUBLIC RECORDS OF PALM BEACH COUNTY, FLORIDA
 SITUATE IN THE SOUTH ONE-HALF OF SECTION 35, TOWNSHIP 41 SOUTH, RANGE 42 EAST,
 AND SECTION 2, TOWNSHIP 42 SOUTH, RANGE 42 EAST,
 CITY OF PALM BEACH GARDENS, PALM BEACH COUNTY, FLORIDA
 FEBRUARY, 2004
 SHEET 7 OF 11

- LEGEND:
 L = ARC LENGTH
 C = CENTERLINE
 Δ = CENTRAL/DELTA ANGLE
 D.E. = DRAINAGE EASEMENT
 FND = FUND
 F.P.L. = FLORIDA POWER & LIGHT
 L.M.E. = LAKE MAINTENANCE EASEMENT
 LB = LICENSE BUSINESS
 O.R.B. = OFFICIAL RECORD BOOK
 PG. = PAGE
 PGS. = PAGES
 P.B. = PLAT BOOK
 POB = POINT OF BEGINNING
 R = RADIUS
 SQ.FT. = SQUARE FEET
 U.E. = UTILITY EASEMENT
 © = PERMANENT CONTROL POINT (P.C.P.)
 "LB#7055"
 ■ = SET PERMANENT REFERENCE MONUMENT (P.R.M.) "LB#7055" UNLESS OTHERWISE NOTED
 SUA = SEACOAST UTILITY AUTHORITY
 WSE = WATERLINE & SEWERLINE EASEMENT

63

STATE OF FLORIDA
 COUNTY OF PALM BEACH
 THIS PLAT WAS FILED FOR
 RECORD AT _____ M.
 THIS _____ DAY OF _____
 A.D. 2004 AND DULY RECORDED
 IN PLAT BOOK _____ ON
 PAGES _____ THROUGH _____
 DOROTHY H. WILKEN
 CLERK CIRCUIT COURT
 BY: _____
 DEPUTY CLERK



NOTICE:
 THIS PLAT, AS RECORDED IN ITS GRAPHIC FORM, IS THE OFFICIAL DEPICTION OF THE
 SUBDIVIDED LANDS DESCRIBED HEREIN AND WILL IN NO CIRCUMSTANCES BE SUPPLANTED IN
 AUTHORITY BY ANY OTHER GRAPHIC OR DIGITAL FORM OF THE PLAT. THERE MAY BE
 ADDITIONAL RESTRICTIONS THAT ARE NOT RECORDED ON THIS PLAT THAT MAY BE FOUND IN
 THE PUBLIC RECORDS OF THIS COUNTY.

W Wantman Group, Inc.
 Engineering ♦ Surveying ♦ Mapping
 901 NORTHPOINT PARKWAY, SUITE 204
 WEST PALM BEACH, FL 33407
 (561) 687-2220 phone (561) 687-1110 fax
 CERT No. 6091 - LB No. 7055
 THIS INSTRUMENT WAS PREPARED BY MARTIN J. SHATTO, P.S.M.
 PROFESSIONAL SURVEYOR AND MAPPER, REGISTRATION NO. 5219
 IN THE OFFICES OF WANTMAN GROUP, INC.