

# OLD PALM PLAT FIVE

A REPLAT OF A PORTION OF PARCEL 1, OLD PALM PLAT 1 AS RECORDED  
 IN PLAT BOOK 96, PAGES 31 THROUGH 34, OF THE PUBLIC RECORDS OF PALM BEACH COUNTY, FLORIDA  
 SITUATE IN THE SOUTH ONE-HALF OF SECTION 35, TOWNSHIP 41 SOUTH, RANGE 42 EAST,  
 AND SECTION 2, TOWNSHIP 42 SOUTH, RANGE 42 EAST,  
 CITY OF PALM BEACH GARDENS, PALM BEACH COUNTY, FLORIDA  
 FEBRUARY, 2004  
 SHEET 3 OF 11

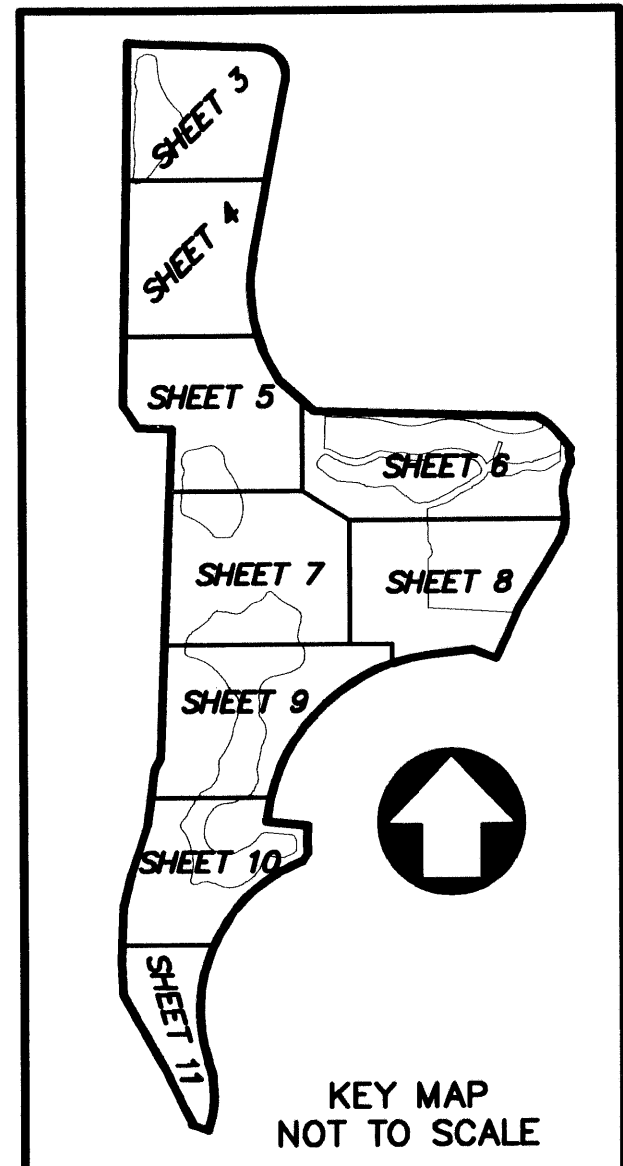
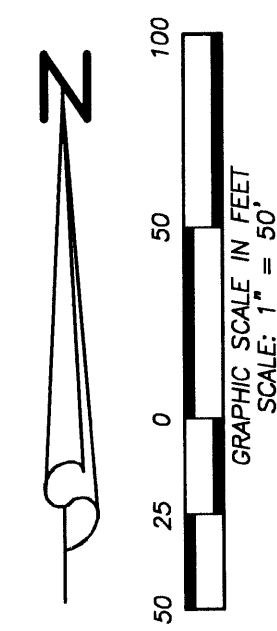
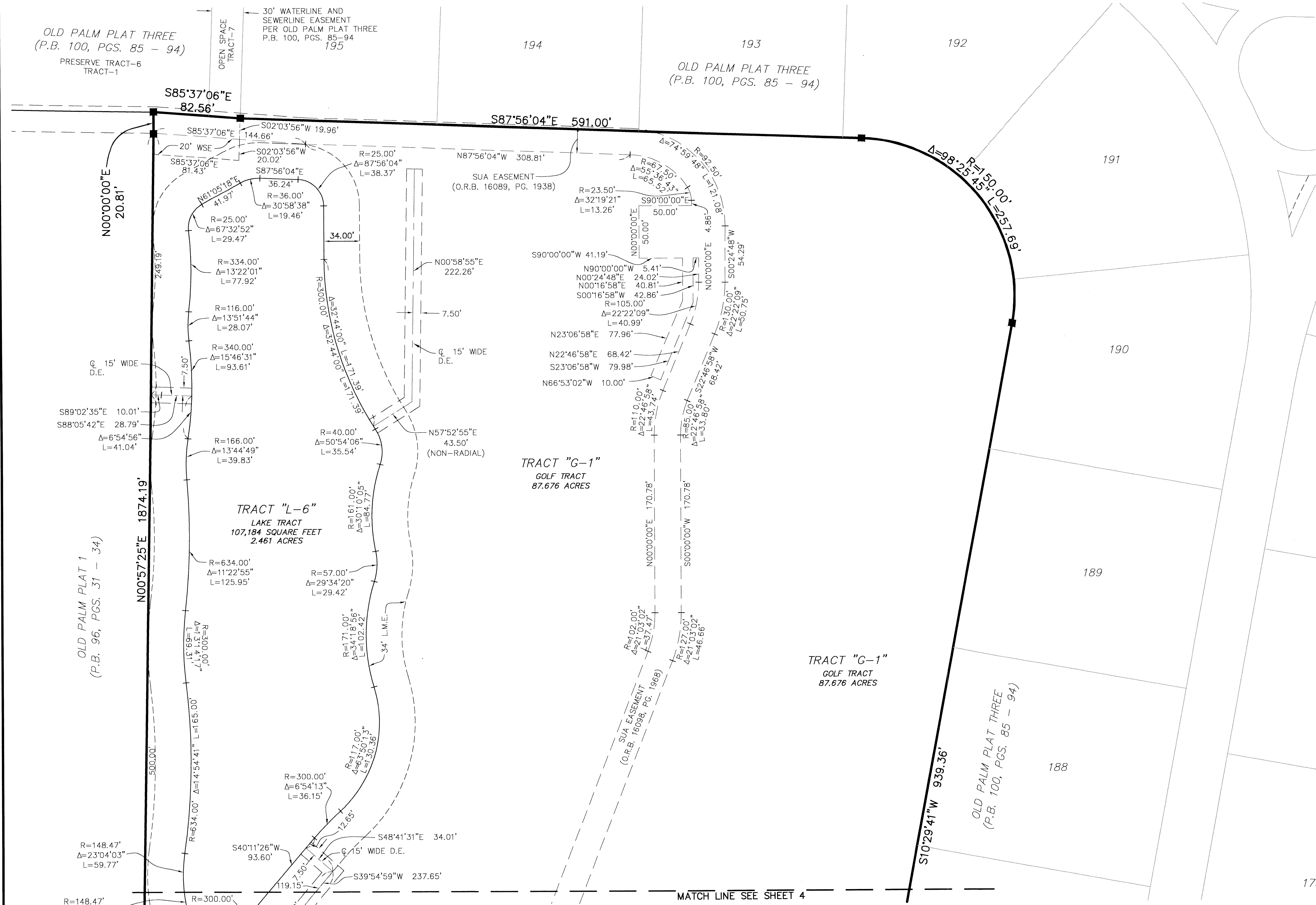
59

STATE OF FLORIDA  
 COUNTY OF PALM BEACH  
 THIS PLAT WAS FILED FOR  
 RECORD AT \_\_\_\_\_ M.

THIS \_\_\_\_\_ DAY OF \_\_\_\_\_  
 A.D. 2004 AND DULY RECORDED  
 IN PLAT BOOK \_\_\_\_\_ ON  
 PAGES \_\_\_\_\_ THROUGH \_\_\_\_\_

DOROTHY H. WILKEN  
 CLERK CIRCUIT COURT

BY: \_\_\_\_\_  
 DEPUTY CLERK



- LEGEND:
- L = ARC LENGTH
  - ⊙ = CENTERLINE
  - Δ = CENTRAL DELTA ANGLE
  - D.E. = DRAINAGE EASEMENT
  - FND = FOUND
  - F.P.L. = FLORIDA POWER & LIGHT
  - L.M.E. = LAKE MAINTENANCE EASEMENT
  - LB = LICENSE BUSINESS
  - O.R.B. = OFFICIAL RECORD BOOK
  - PG. = PAGE
  - PGS. = PAGES
  - P.B. = PLAT BOOK
  - POB = POINT OF BEGINNING
  - R = RADIUS
  - SQ.FT. = SQUARE FEET
  - U.E. = UTILITY EASEMENT
  - ⊕ = PERMANENT CONTROL POINT (P.C.P.)
  - ⊙ = "LB#7055"
  - = SET PERMANENT REFERENCE MONUMENT (P.R.M.) "LB#7055" UNLESS OTHERWISE NOTED
  - SUA = SEACOAST UTILITY AUTHORITY
  - WSE = WATERLINE & SEWERLINE EASEMENT

NOTICE:  
 THIS PLAT, AS RECORDED IN ITS GRAPHIC FORM, IS THE OFFICIAL DEPICTION OF THE  
 SUBDIVIDED LANDS DESCRIBED HEREIN AND WILL, IN NO CIRCUMSTANCES BE SUPPLANTED IN  
 AUTHORITY BY ANY OTHER GRAPHIC OR DIGITAL FORM OF THE PLAT. THERE MAY BE  
 ADDITIONAL RESTRICTIONS THAT ARE NOT RECORDED ON THIS PLAT THAT MAY BE FOUND IN  
 THE PUBLIC RECORDS OF THIS COUNTY.

**W** Wantman Group, Inc.  
 Engineering ♦ Surveying ♦ Mapping  
 901 NORTHPOINT PARKWAY, SUITE 204  
 WEST PALM BEACH, FL 33407  
 (561) 687-2220 phone (561) 687-1110 fax  
 CERT No. 6091 - LB No. 7055  
 THIS INSTRUMENT WAS PREPARED BY MARTIN J. SHATTO, P.S.M.  
 PROFESSIONAL SURVEYOR AND MAPPER, REGISTRATION NO. 5219  
 IN THE OFFICES OF WANTMAN GROUP, INC.