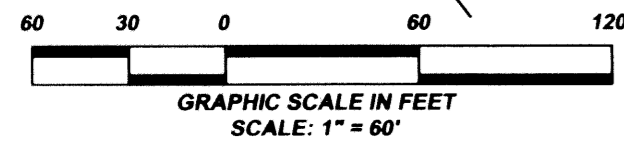


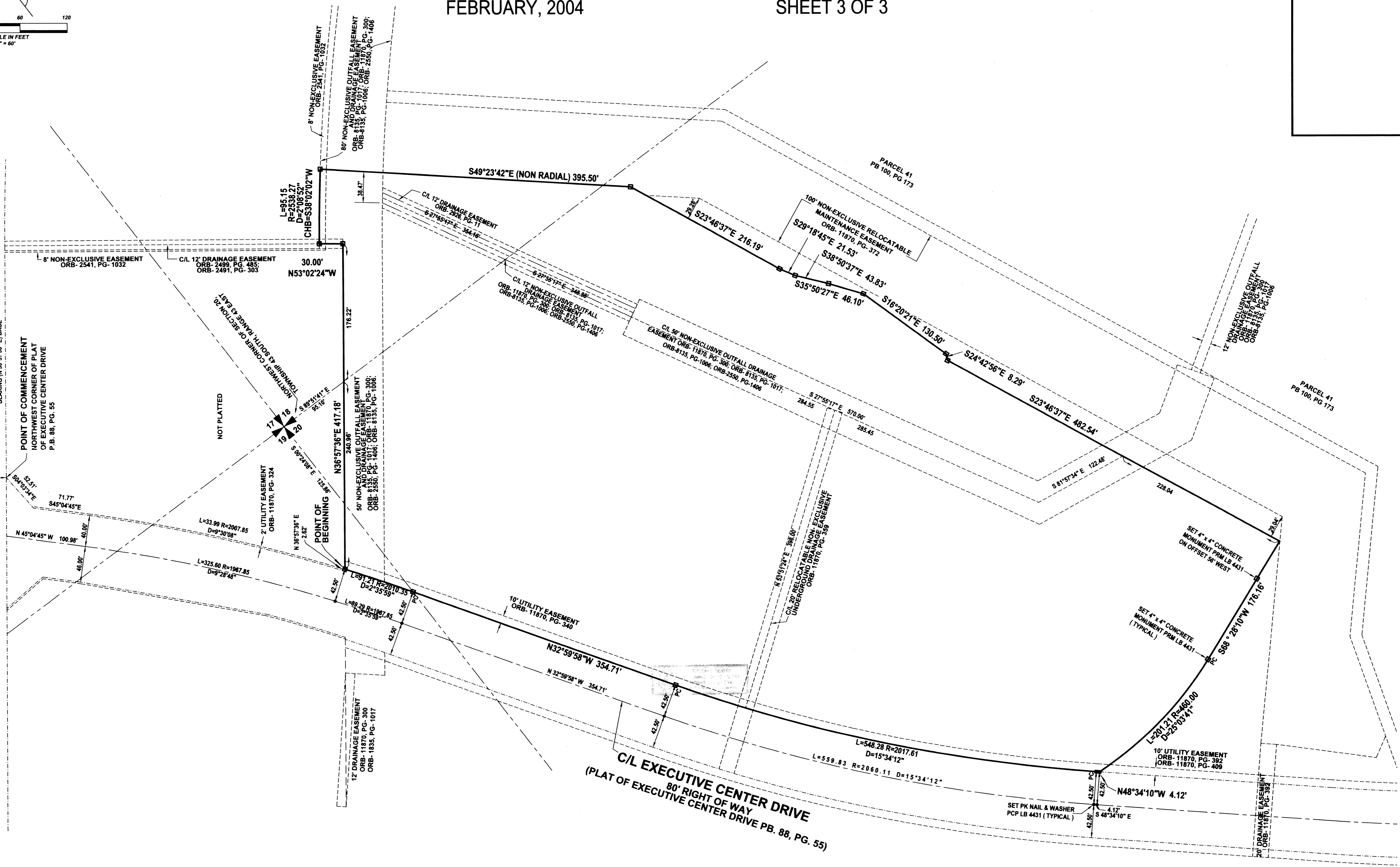
# MALIBU BAY

LYING IN SECTIONS 17, 19 AND 20, TOWNSHIP 43 SOUTH, RANGE 43 EAST,  
CITY OF WEST PALM BEACH, PALM BEACH COUNTY, FLORIDA  
FEBRUARY, 2004 SHEET 3 OF 3



C/I PALM BEACH LAKES BOULEVARD  
200' RIGHT OF WAY  
(PB. 28, PG. 94)

BEARING IN 36°57'36" E BASE  
POINT OF COMMENCEMENT  
NORTHWEST CORNER OF PLAT  
OF EXECUTIVE CENTER DRIVE  
P.B. 88, PG. 55



C/I EXECUTIVE CENTER DRIVE  
80' RIGHT OF WAY  
(PLAT OF EXECUTIVE CENTER DRIVE PB. 88, PG. 55)

**LIDBERG LAND SURVEYING, INC.**  
LB 4431 675 West Indian town Road, Suite 200,  
Jupiter, Florida 33458 TEL 561-746-8454

CAD K:\AUTOCAD2000\204343\02-226_Plat.dwg\2262306.DWG			
REF			
FLD	B.D.	FB. 391	PC. 57
OFF	S.F.B.		JOB 02-226 (306)
CKD	D.C.L.	SHEET 3 OF 3	DATE 12/13/02
			DWG D02-226P