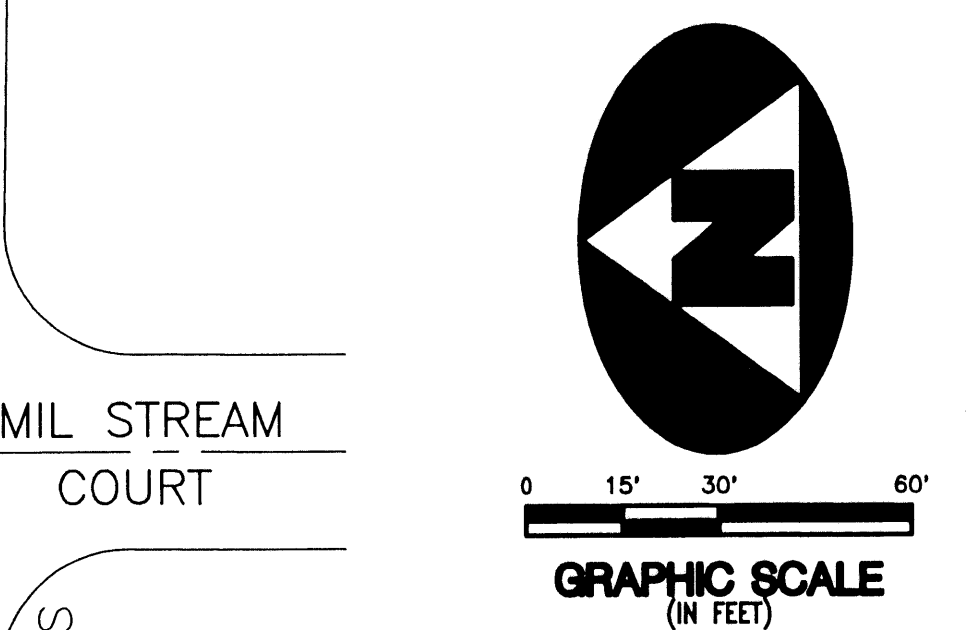
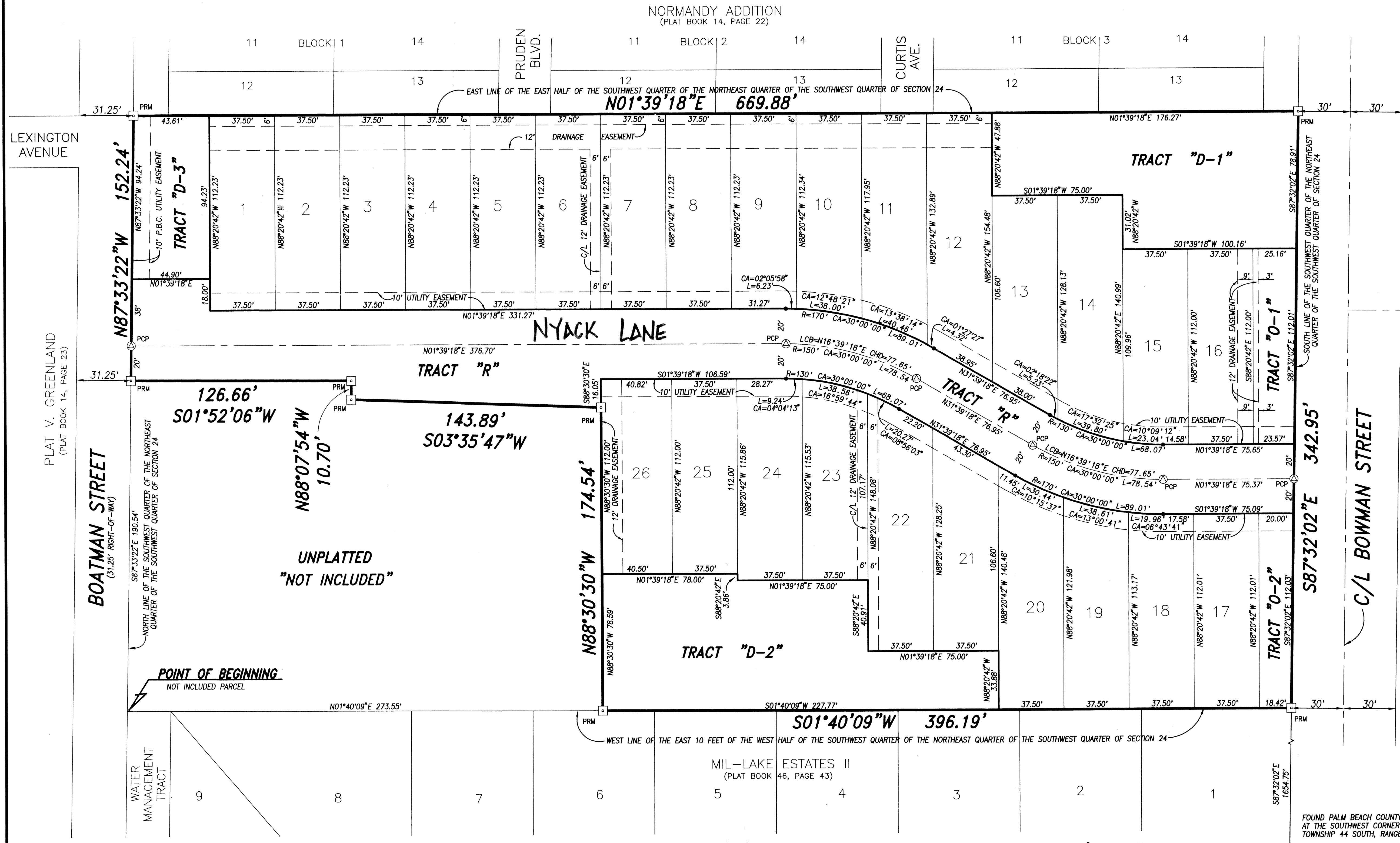


# MANATEE KEY

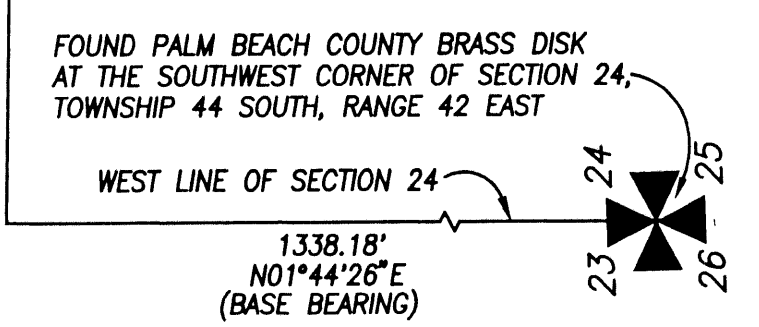
51

LYING IN SECTION 24, TOWNSHIP 44 SOUTH, RANGE 42 EAST, CITY OF GREENACRES, PALM BEACH COUNTY, FLORIDA



- LEGEND:**
- C/L DENOTES A CENTERLINE
  - R DENOTES RADIUS DISTANCE
  - L DENOTES ARC LENGTH DISTANCE
  - CA DENOTES CENTRAL ANGLE
  - CHD DENOTES LONG CHORD BEARING
  - P.C.D. DENOTES CHORD DISTANCE
  - PCP DENOTES PALM BEACH COUNTY DENOTES PERMANENT CONTROL POINT
  - PRM DENOTES PERMANENT REFERENCE MONUMENT
  - DENOTES A SET PERMANENT REFERENCE MONUMENT (LB 2171)
  - ⊙ DENOTES A PERMANENT CONTROL POINT

- SURVEYOR'S NOTES:**
1. THE BASE BEARING, AS SHOWN HEREON, IS  $N01^{\circ}44'26''E$  ALONG THE WEST LINE OF SECTION 24, TOWNSHIP 44 SOUTH, RANGE 42 EAST, PALM BEACH COUNTY, FLORIDA
  2. IN THOSE INSTANCES WHERE UTILITY OR DRAINAGE STRUCTURES ARE CONSTRUCTED IN CONFLICT WITH THE PLATTED PERMANENT CONTROL POINT POSITION STRADDLERS MONUMENTED AS PERMANENT CONTROL POINTS WILL BE SET TO REFERENCE THE PLATTED POSITION.
  3. LINES THAT INTERSECT CURVES ARE NOT RADIAL UNLESS OTHERWISE NOTED.
  4. THIS INSTRUMENT WAS PREPARED BY WM. R. VAN CAMPEN, P.S.M. NO. 2424, IN AND FOR THE OFFICES OF BENCH MARK LAND SURVEYING & MAPPING, INC., 4152 WEST BLUE HERON BOULEVARD, SUITE 121, RIVIERA BEACH, FLORIDA, 33407



**BENCH MARK LAND SURVEYING & MAPPING, INC.**  
 4152 W. BLUE HERON BOULEVARD • SUITE 121  
 RIVIERA BEACH • FLORIDA 33404  
 PHONE: (561) 848-2102 • L.B. 2171 • FAX: (561) 844-9659  
 \* EMAIL: bmlsm@aol.com WEB: http://members.aol.com/bmlsm

**RECORD PLAT**  
**MANATEE KEY**  
 CITY OF GREENACRES, FLORIDA

DWN SS	FB	DATE 04-02-2001	WO.# 99-0027
CKD -	FILE 99-0027PLAT	SCALE 1"=30'	SHEET 2 OF 2