

# OLYMPIA - PLAT II, BLOCK 'F' REPLAT

BEING A REPLAT OF BLOCK 'F', OLYMPIA - PLAT II, AS RECORDED IN PLAT BOOK 98, PAGES 1 THROUGH 24 OF THE PUBLIC RECORDS OF PALM BEACH COUNTY, FLORIDA, AND BEING IN PORTIONS OF SECTIONS 17 AND 18, TOWNSHIP 44 SOUTH, RANGE 42 EAST, VILLAGE OF WELLINGTON, PALM BEACH COUNTY, FLORIDA

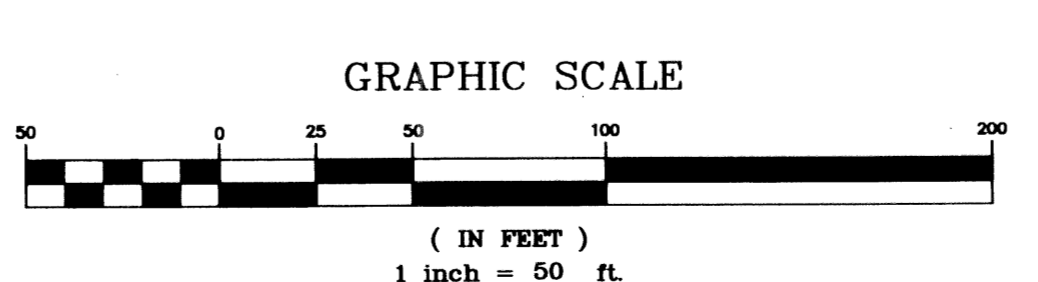
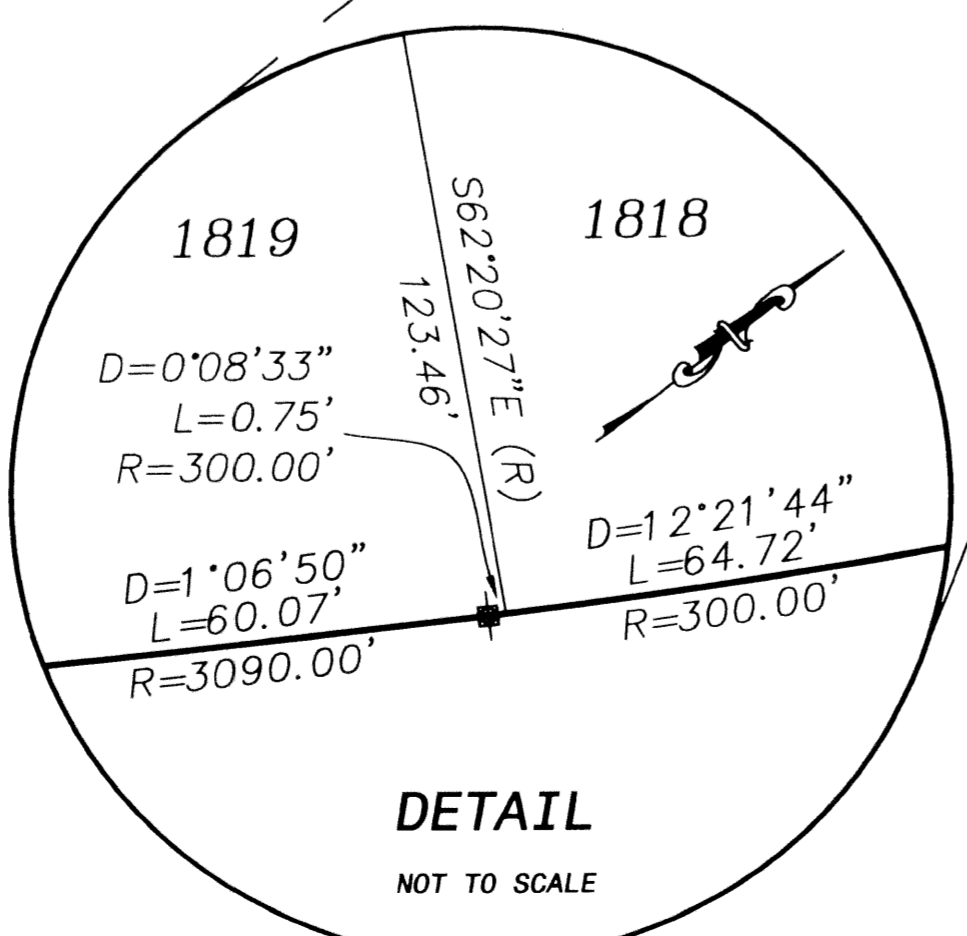
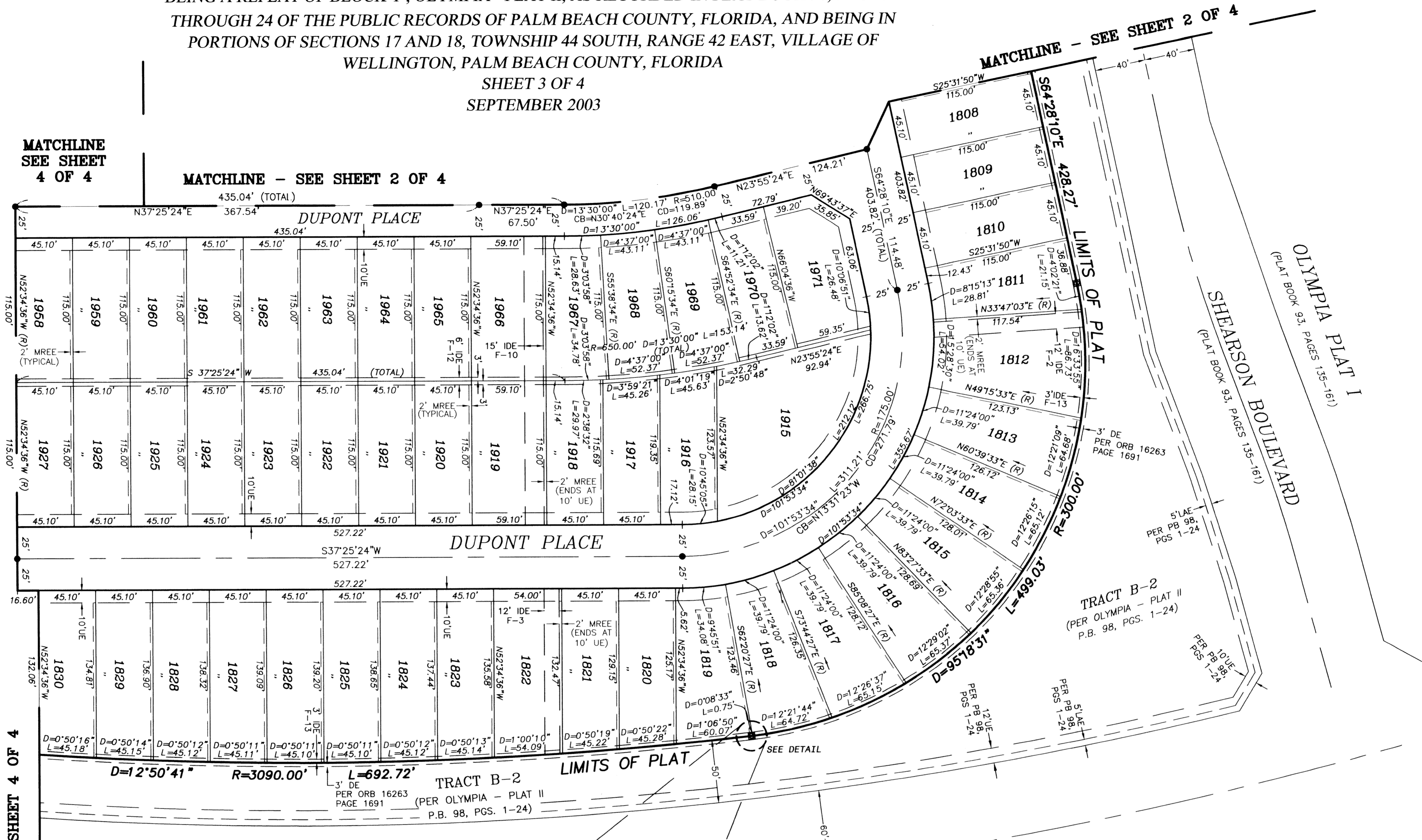
SHEET 3 OF 4  
SEPTEMBER 2003

MATCHLINE  
SEE SHEET  
4 OF 4

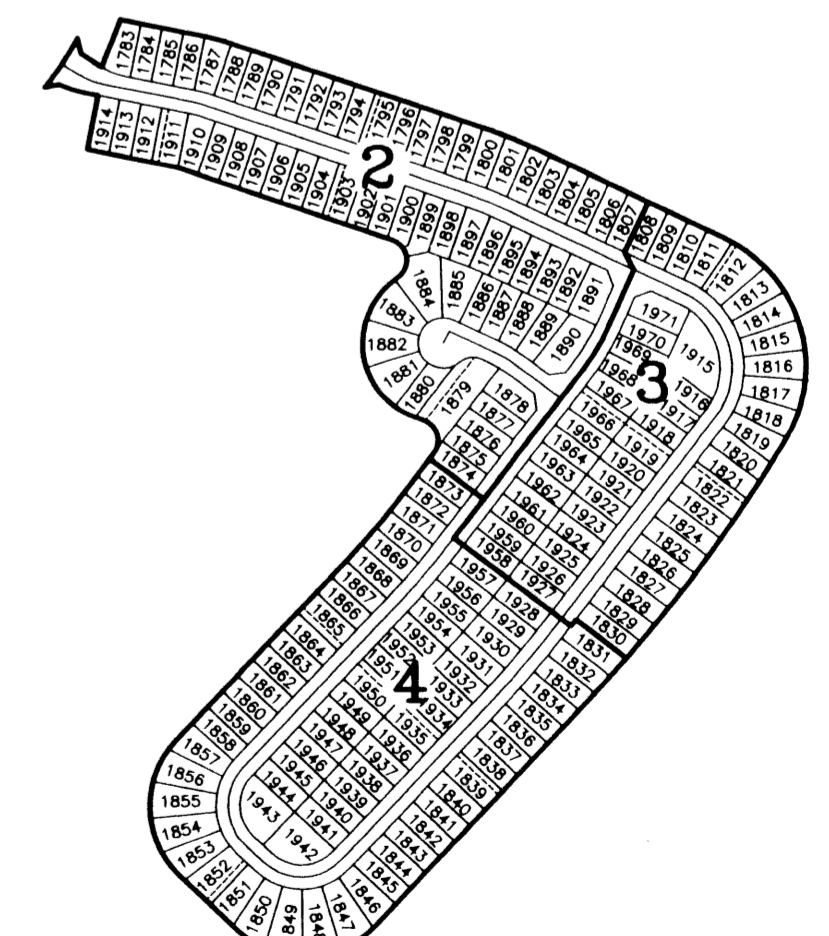
MATCHLINE - SEE SHEET 2 OF 4

MATCHLINE - SEE SHEET 4 OF 4

MATCHLINE - SEE SHEET 4 OF 4



## SHEET INDEX



- LEGEND:**
- D= DELTA (CENTRAL ANGLE)
  - L= LENGTH
  - R= RADIUS
  - PSM= PROFESSIONAL SURVEYOR AND MAPPER
  - PLS= PROFESSIONAL LAND SURVEYOR
  - LAE= LIMITED ACCESS EASEMENT
  - LMAE= LAKE MAINTENANCE ACCESS EASEMENT
  - MREE= MAINTENANCE AND ROOF EAVE EASEMENT
  - UE= UTILITY EASEMENT
  - IDE F-1= INTERIOR DRAINAGE EASEMENT No. F-1
  - ORB= OFFICIAL RECORD BOOK
  - P.B.= PLAT BOOK
  - PG.= PAGE
  - (R)= RADIAL
  - = SET PERMANENT REFERENCE MONUMENT \*LB 4318\*
  - = PERMANENT CONTROL POINT \*LB 4318\*
  - LME= LAKE MAINTENANCE EASEMENT (PER PB 98, PGS 1-24)
  - CB= CHORD BEARING
  - CD= CHORD DISTANCE
  - PBC= PALM BEACH COUNTY
  - ESMT= EASEMENT

<b>OLYMPIA - PLAT II, BLOCK 'F' REPLAT</b>	
<b>NMI</b> NICK MILLER INC. 2560 RCA BLVD, STE 105, PALM BEACH GARDENS, FL 33410 TEL: 561.627.5200 FAX: 561.627.0983 www.nickmillerinc.com D.B.P.R. BUSINESS LICENSE No. 4318	SHEET NO. 3 of 4 SCALE: 1"=50' DATE: SEPTEMBER 2003 JOB NO. 1008.123 FILE: 1008.123.dwg