

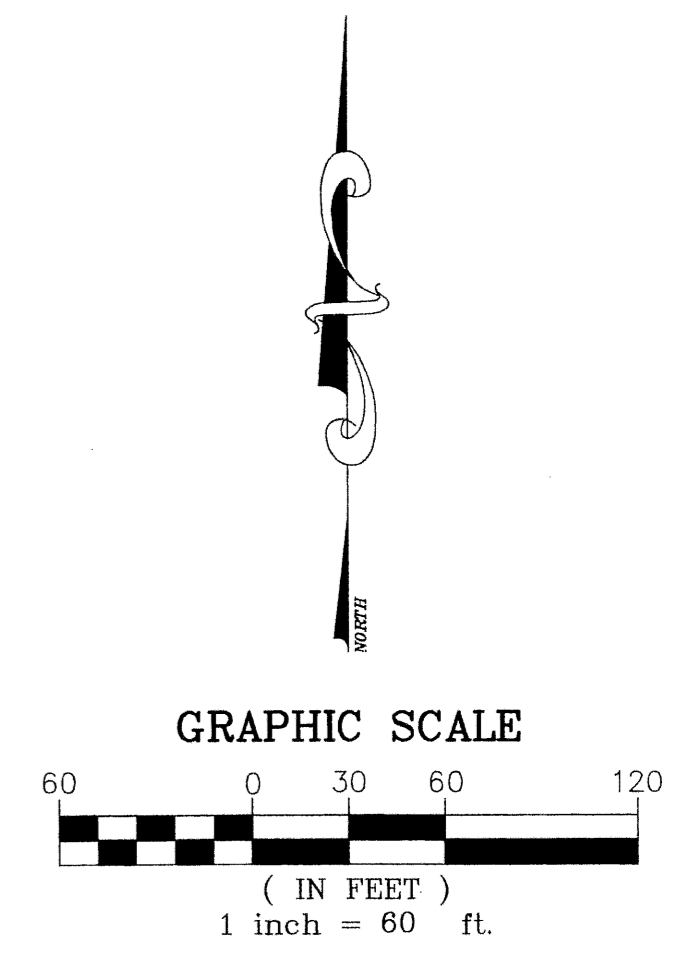
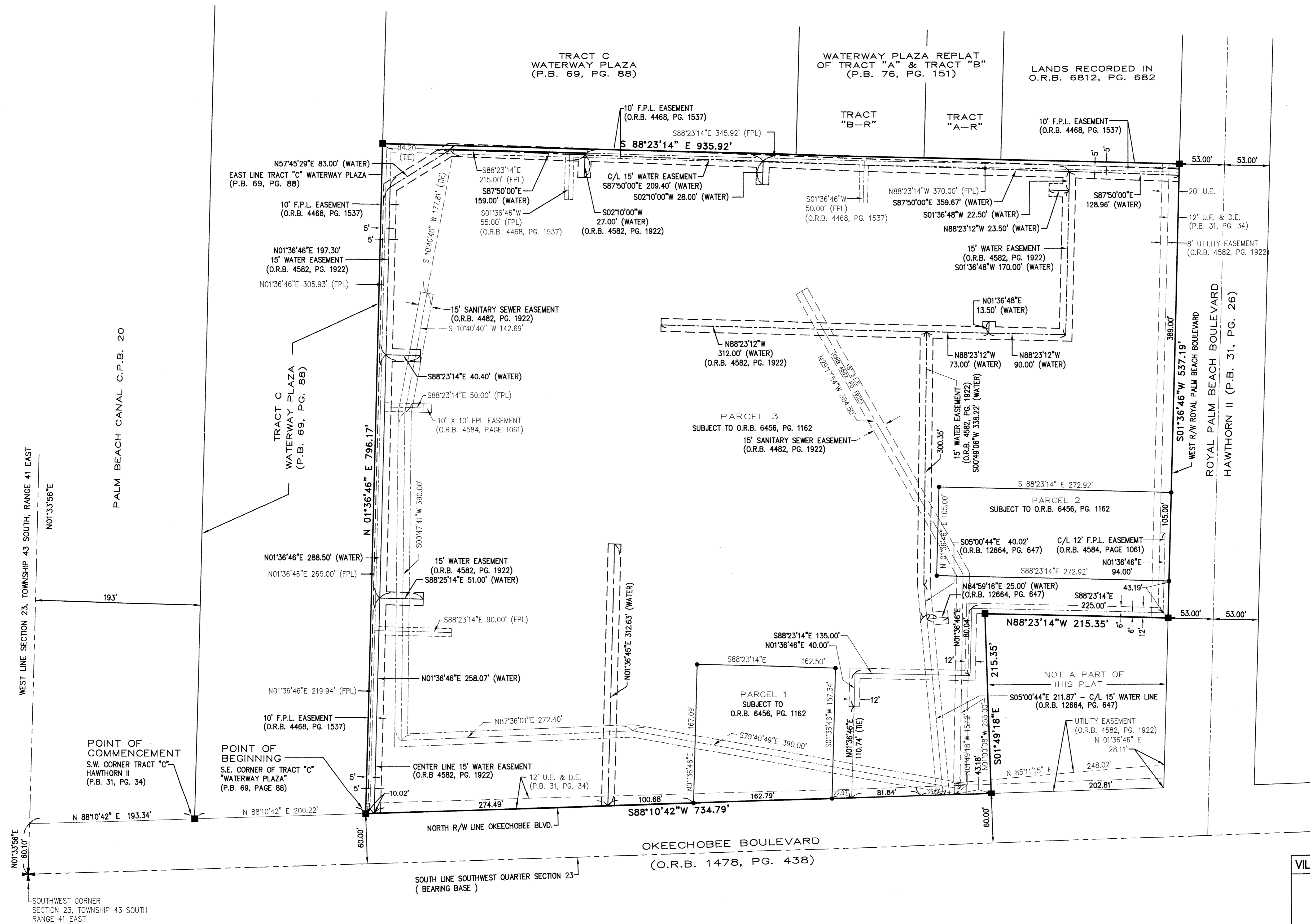
# VILLAGE ROYALE SHOPPING CENTER PLAT

35

APRIL 2003

BEING A REPLAT OF A PORTION OF TRACT "C" OF THE PLAT OF HAWTHORN II, AS RECORDED IN PLAT BOOK 31, PAGES 26 THROUGH 35 OF THE PUBLIC RECORDS OF PALM BEACH COUNTY, FLORIDA, IN SECTION 23, TOWNSHIP 43 SOUTH, RANGE 41 EAST VILLAGE OF ROYAL PALM BEACH, PALM BEACH COUNTY, FLORIDA

SHEET 2 OF 2



**VILLAGE ROYALE SHOPPING CENTER PLAT**

CARNEY-NEUHAUS, INC.  
LB6770

11811 U.S. HIGHWAY 1, SUITE 120  
PALM BEACH GARDENS, FL 33409  
TEL: (561) 955-1200  
FAX: (561) 955-1208  
EMAIL: CNP@CARNEY-NEUHAUS.COM

3000 BISCAYNE BOULEVARD, SUITE 200  
MIAMI, FL 33133  
TEL: (305) 676-9960  
FAX: (305) 676-9960

4101 N. ANDREWS AVE., SUITE 213  
FORT LAUDERDALE, FL 33309  
TEL: (954) 525-0230  
FAX: (954) 525-3024

FIELD	PROJ. # 86-099	F.B.	PG.
OFFICE LDS	DATE: 08-13-01	DWG. NO. COVER	
C'KD: DOC	REF:	SHEET:	2 of 2