

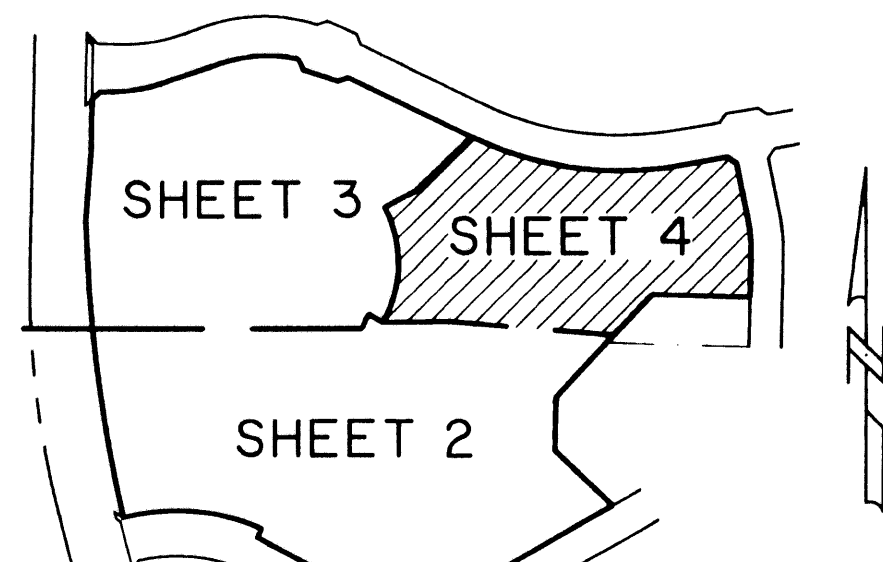
# DOWNTOWN AT THE GARDENS AND LANDMARK

LYING IN SECTION 6, TOWNSHIP 42 SOUTH, RANGE 43 EAST, CITY OF PALM BEACH GARDENS, PALM BEACH COUNTY, FLORIDA, BEING A REPLAT OF REGIONAL CENTER PARCELS 27.12, 27.14 AND LAKE VICTORIA GARDENS AVENUE, AS RECORDED IN PLAT BOOK 94, PAGES 40 THROUGH 42, PUBLIC RECORDS OF PALM BEACH COUNTY, FLORIDA, AND A REPLAT OF WATER MANAGEMENT TRACT 3-B AND A PORTION OF PARCEL 27.13, REGIONAL CENTER PARCELS 27.09, 27.13 AND WATER MANAGEMENT TRACT 3-B, AS RECORDED IN PLAT BOOK 90, PAGES 199 THROUGH 201, PUBLIC RECORDS OF PALM BEACH COUNTY, FLORIDA.

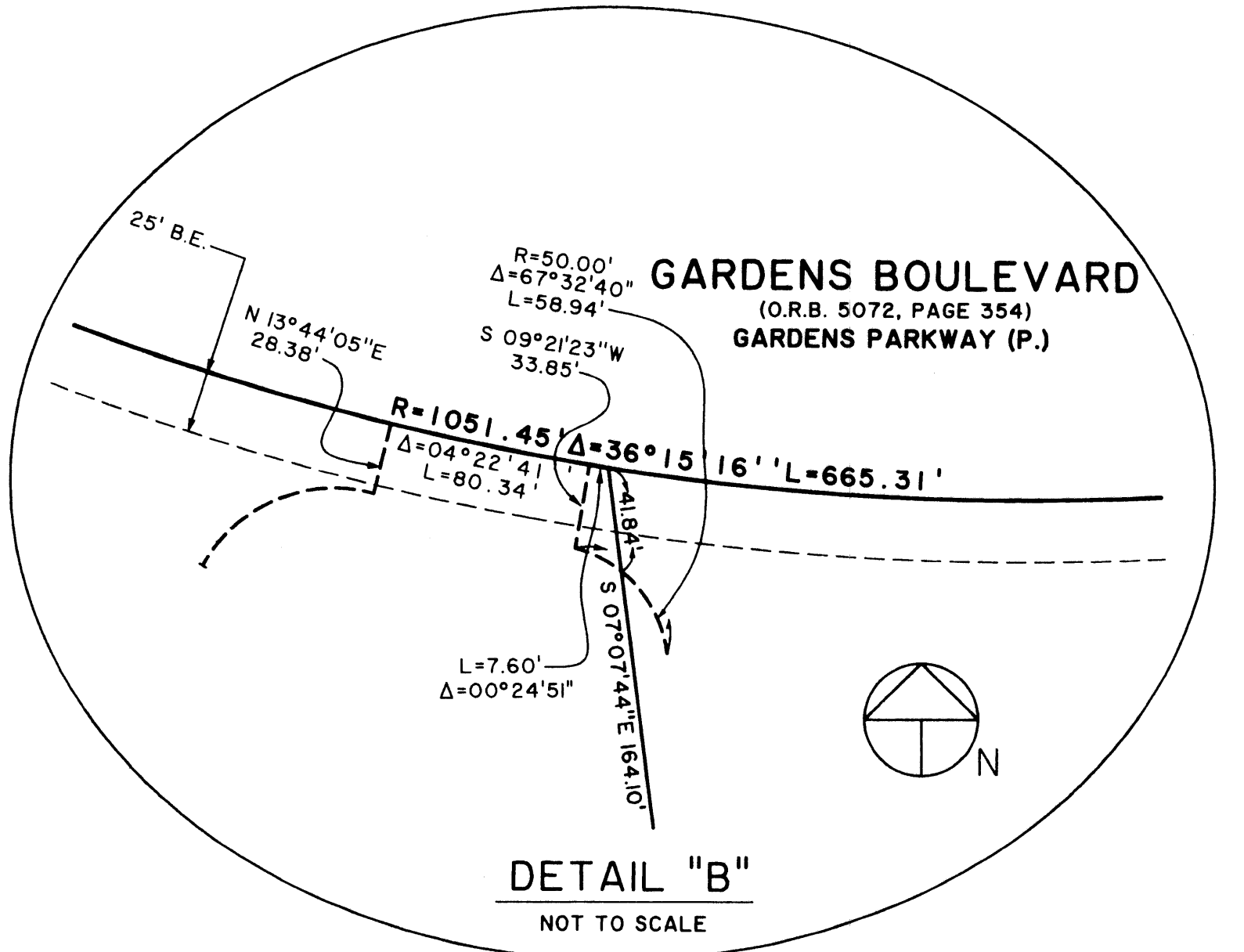
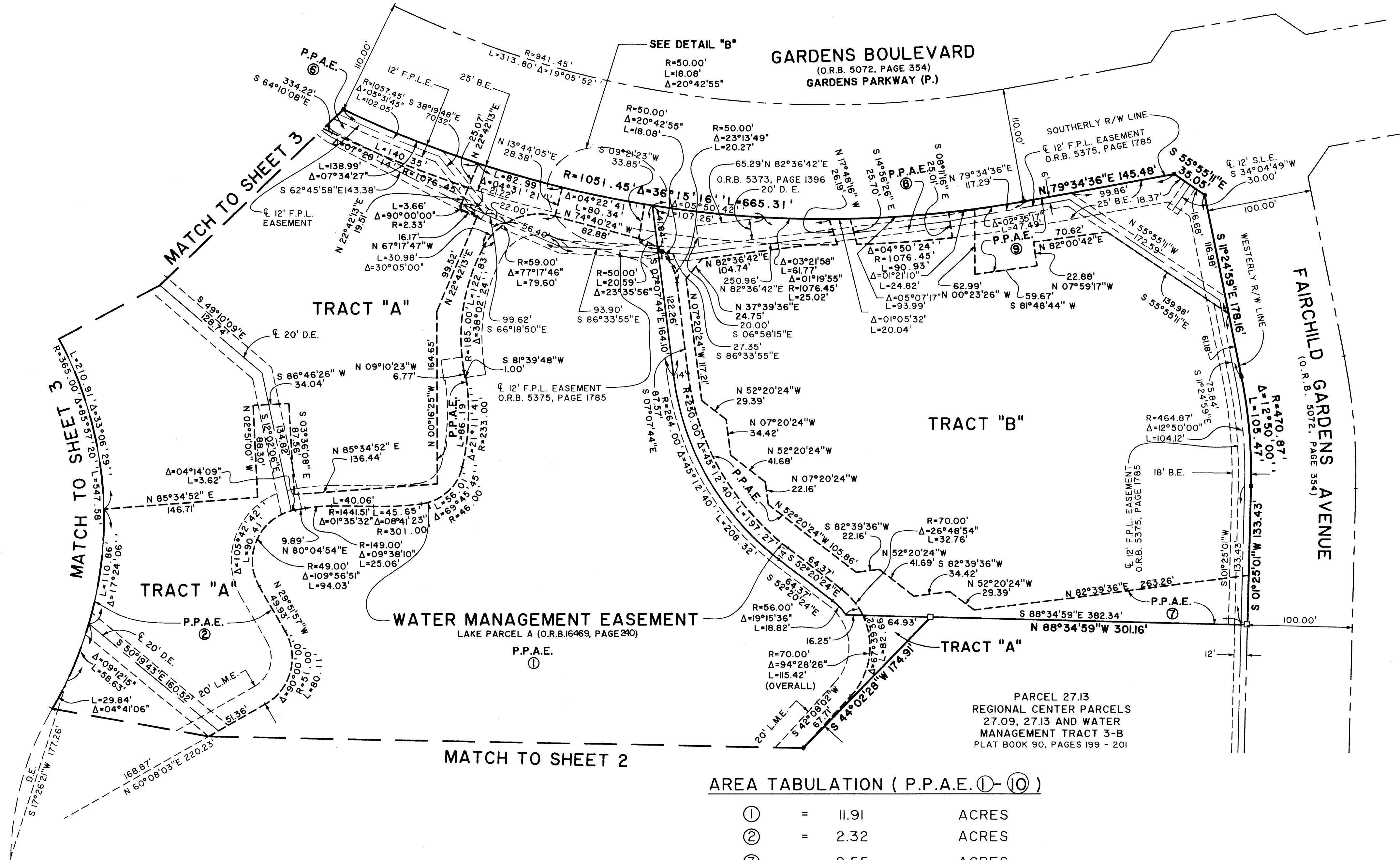
SHEET 4 OF 4

15

STATE OF FLORIDA SS  
 COUNTY OF PALM BEACH  
 THIS PLAT WAS FILED FOR RECORD AT \_\_\_\_\_  
 M. THIS DAY OF \_\_\_\_\_ 2004  
 AND DULY RECORDED IN PLAT BOOK NO. \_\_\_\_\_  
 ON PAGE \_\_\_\_\_  
 DOROTHY H. WILKEN,  
 CLERK OF THE CIRCUIT COURT  
 BY \_\_\_\_\_ D.C.

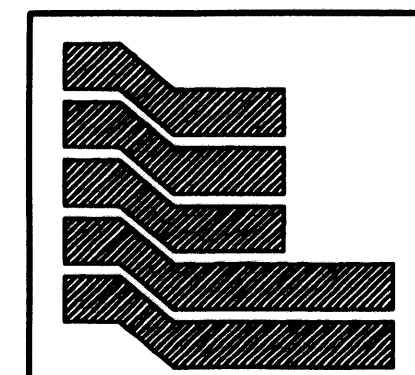
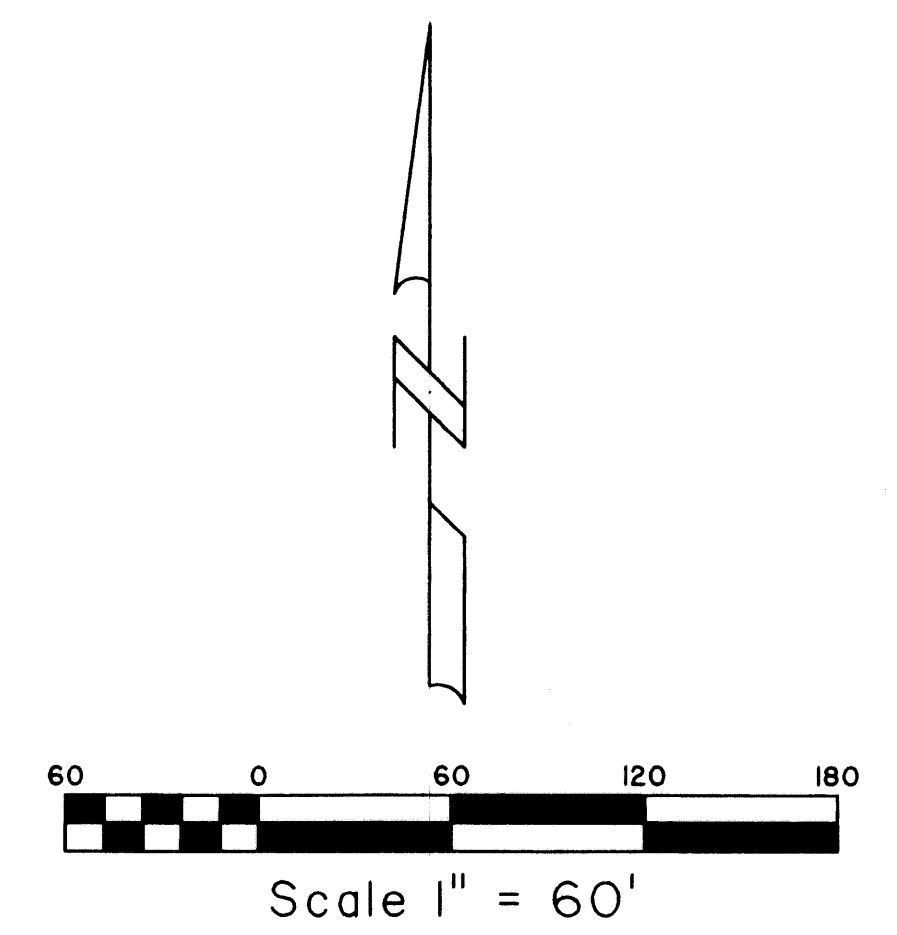


KEY MAP  
NOT TO SCALE



AREA TABULATION ( P.P.A.E. ①-⑩ )

①	=	11.91	ACRES
②	=	2.32	ACRES
③	=	0.55	ACRES
④	=	0.33	ACRES
⑤	=	0.92	ACRES
⑥	=	0.50	ACRES
⑦	=	0.54	ACRES
⑧	=	0.05	ACRES
⑨	=	0.35	ACRES
⑩	=	0.44	ACRES
TOTAL	=	17.91	ACRES



**Landmark Surveying & Mapping Inc.**  
 1850 Forest Hill Boulevard  
 Ph. (561) 433-5405 Suite 100 W.P.B. Florida  
 LB # 4396

**DOWNTOWN AT THE GARDENS  
 AND LANDMARK**