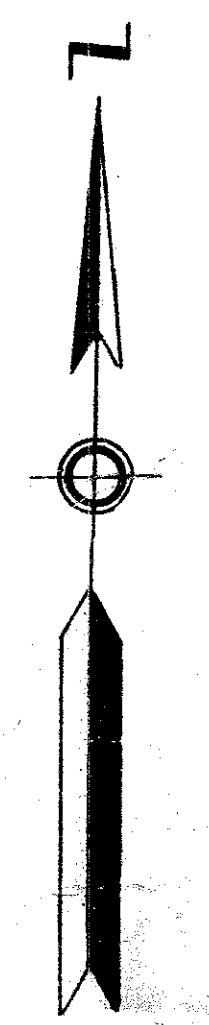
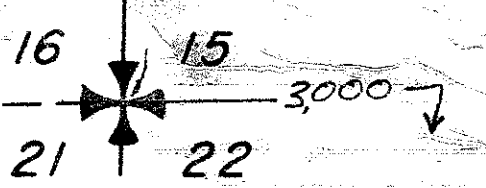


STATE OF FLORIDA
COUNTY OF PALM BEACH
This Plat was filed for record at _____ M.
this _____ day of _____, 1978
and duly recorded in Plat Book No. _____
on page _____
JOHN B. DUNKLE, Clerk Circuit Court
By _____, J.C.



UNPLATTED



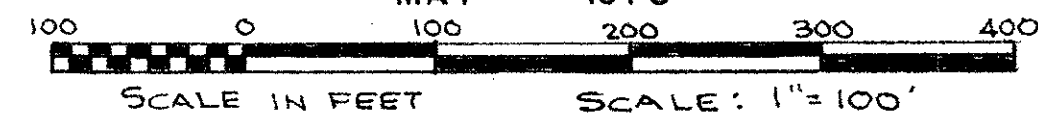
EQUESTRIAN / POLO VILLAGE AND COMPLEX OF PALM BEACH POLO AND COUNTRY CLUB WELLINGTON - P.U.D.

IN PART OF SECTION 16, TWP. 44 S., RGE. 41 E.
PALM BEACH COUNTY, FLORIDA

Being a REPLAT of Blocks 51 and 58; Part of Blocks 59 and 60; Part of Stratton Drive; All of Yorkshire Village Drive South, Stratton Curt East and Vintage Way of GREENVIEW SHORES NO. 2 OF WELLINGTON-P.U.D. as recorded in Plat Book 31, Figs 120-136, inclusive, Public Records of Palm Beach County, Florida and other lands.
ABANDONMENT of Part of GREENVIEW SHORES NO. 2, East of South Portion of Lake Worth Road and South of South Shore Boulevard as per O.R.B. 2909 - Pgs. 1300-1304

IN 2 SHEETS SHEET NO. 2
GEE & JENSON
ENGINEERS-ARCHITECTS-PLANNERS, INC.
WEST PALM BEACH, FLORIDA
MAY 1978

0332-055



CURVE DATA

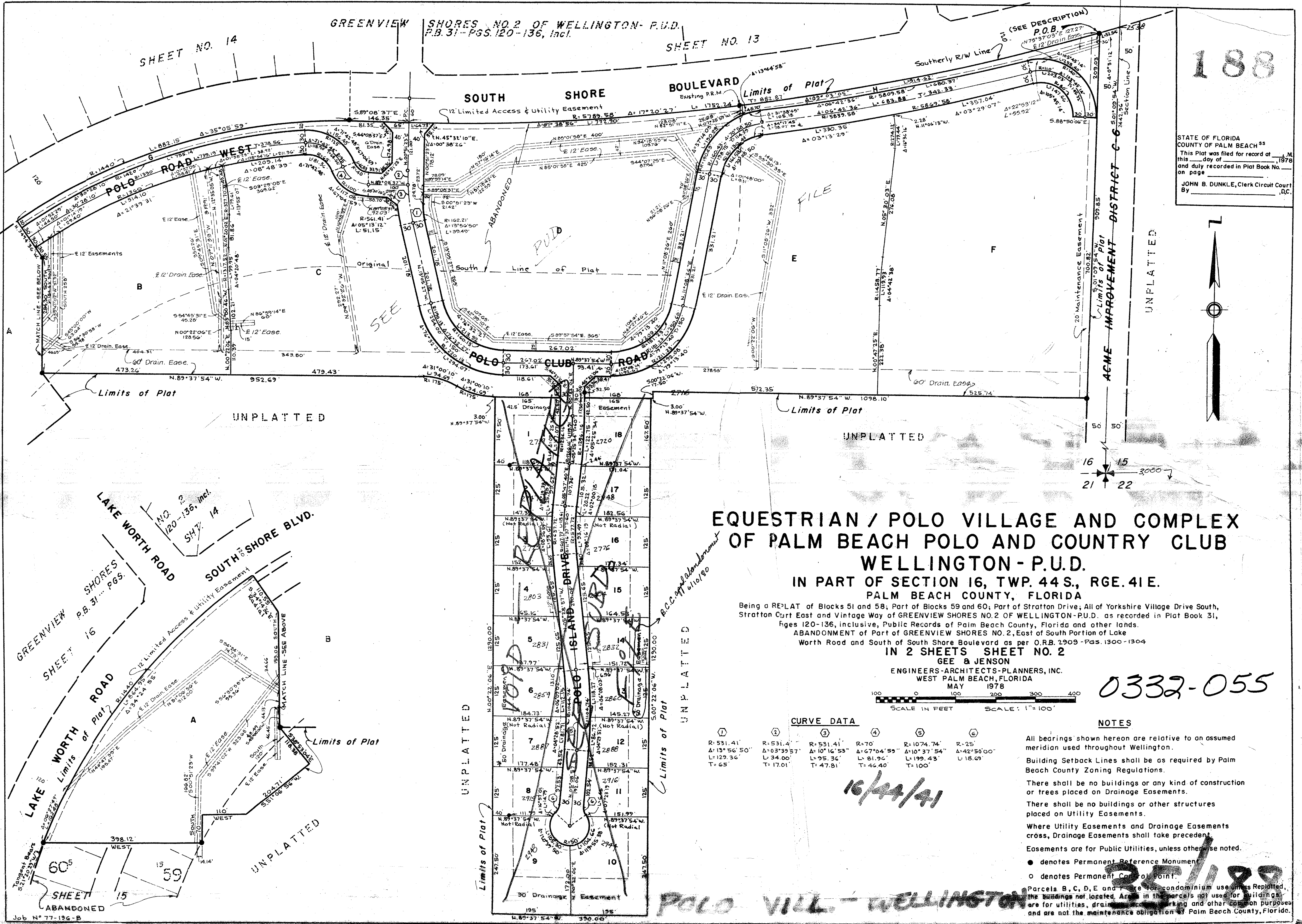
①	②	③	④	⑤	⑥
R-531.41'	R-531.41'	R-531.41'	R-70'	R-1074.74'	R-25'
A-13°56'50"	A-03°39'57"	A-10°16'53"	A-67°04'59"	A-10°37'54"	A-42°50'00"
L-129.36'	L-34.00'	L-95.36'	L-81.96'	L-199.43'	L-18.69'
T-65'	T-17.01'	T-47.81'	T-46.40'	T-100'	

10/22/81

NOTES

- All bearings shown hereon are relative to an assumed meridian used throughout Wellington.
- Building Setback Lines shall be as required by Palm Beach County Zoning Regulations.
- There shall be no buildings or any kind of construction or trees placed on Drainage Easements.
- There shall be no buildings or other structures placed on Utility Easements.
- Where Utility Easements and Drainage Easements cross, Drainage Easements shall take precedent.
- Easements are for Public Utilities, unless otherwise noted.
- denotes Permanent Reference Monument
- denotes Permanent Control Point
- Parcels B, C, D, E and F are for condominium use unless Replatted, the buildings not located. Areas in the parcels not used for buildings are for utilities, drainage, parking and other common purposes and are not the maintenance obligation of Palm Beach County, Florida.

POLO VILL - WELLINGTON



SHEET NO. 14

SHEET NO. 13

SHEET 15

Job N° 77-136-B