

TOTAL AREA TRACT 2	14.400 AC.
TOTAL UNITS ALLOWED, TRACT 2	99
TOTAL UNITS PROPOSED, TRACT 2	60
DENSITY PROPOSED, TRACT 2	4.17 UNITS/AC.
AREA OF LOTS, PHASE I	4.362 AC.
AREA, PLATTED ROAD R/W, PHASE I	1.449 AC.
TOTAL AREA PHASE I (THIS PLAT)	5.811 AC.
NO. UNITS PROPOSED, PHASE I	22
DENSITY PROPOSED, PHASE I	3.79 UNITS/AC.
LAND USE - SINGLE FAMILY	

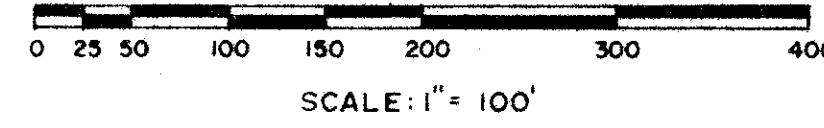
SILVER WOODS

A PLAT OF A PORTION OF SECTION 21, TWP. 47 S., RGE. 42 E.
AND ALSO BEING A REPLAT OF TRACT 2, BOCA DEL MAR NO. 5, AS RECORDED IN
PLAT BOOK 30, PAGES 127-128 OF THE PUBLIC RECORDS OF PALM BEACH COUNTY, FLORIDA
PALM BEACH COUNTY, FLORIDA

JOHN A. GRANT, JR., INC. CONSULTING ENGINEERS & LAND SURVEYORS BOCA RATON, FLORIDA

FEBRUARY, 1978

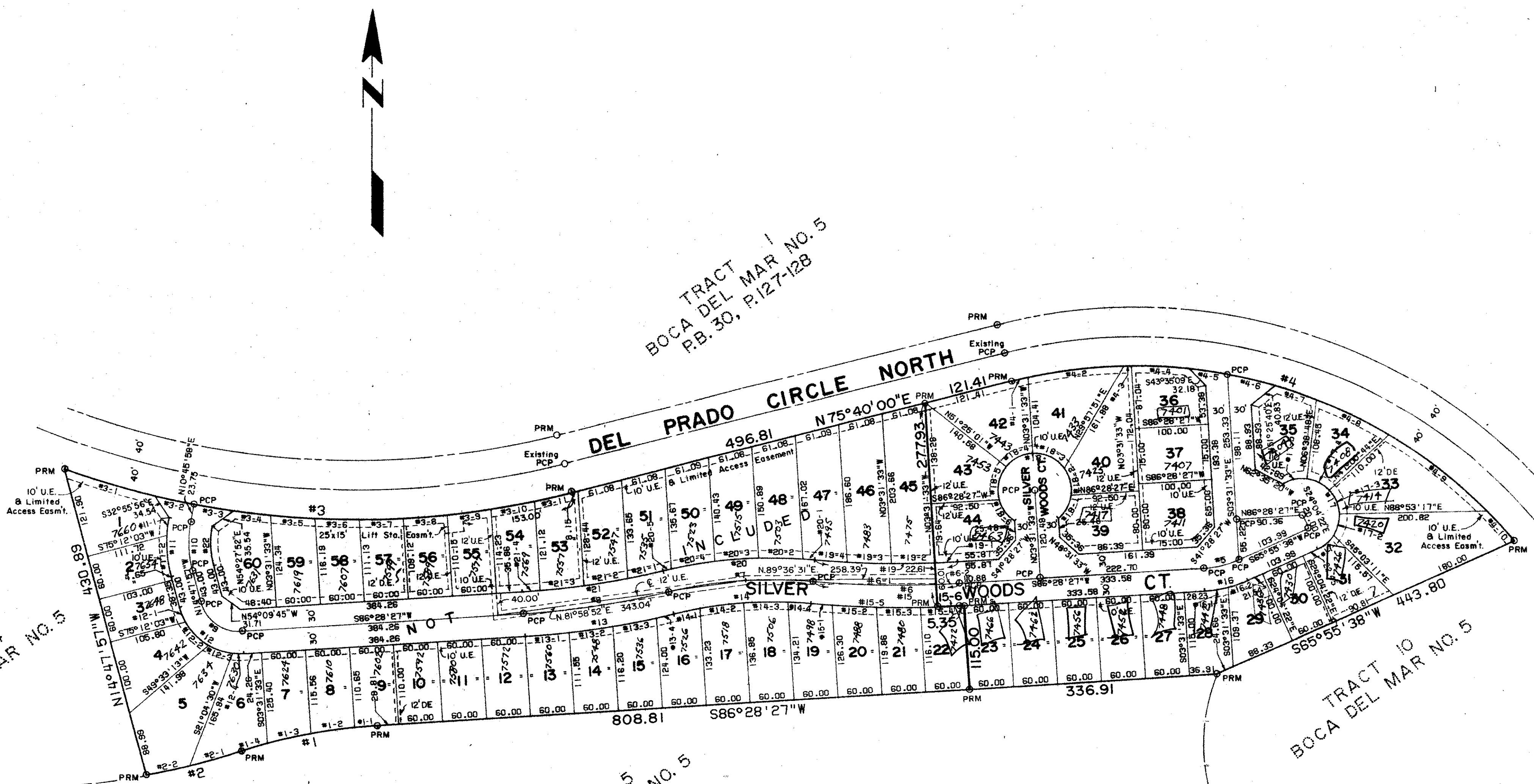
SHEET 2 OF 2



LOT NO.	SQ. FT.
L-1	9,888
L-2	6,338
L-3	6,200
L-4	8,351
L-5	13,244
L-6	9,797
L-7	7,204
L-8	6,762
L-9	6,607
L-10	6,600
L-11	6,600
L-12	6,600
L-13	6,631
L-14	6,617
L-15	7,150
L-16	7,732
L-17	8,134
L-18	8,163
L-19	7,825
L-20	7,371
L-21	7,065
L-22	6,820
L-23	6,800
L-24	6,800
L-25	6,800
L-26	6,800
L-27	6,800
L-28	6,832
L-29	6,863
L-30	6,800
L-31	7,245
L-32	17,356
L-33	13,084
L-34	7,453
L-35	9,222
L-36	7,065
L-37	7,500
L-38	8,697
L-39	9,245
L-40	10,876
L-41	10,810
L-42	9,685
L-43	9,077
L-44	8,242
L-45	12,661
L-46	11,722
L-47	10,615
L-48	9,509
L-49	8,711
L-50	8,254
L-51	9,907
L-52	13,542
L-53	7,979
L-54	7,488
L-55	7,051
L-56	6,716
L-57	6,563
L-58	6,582
L-59	7,200
L-60	8,907
STREET	133,542
TOTAL	627,264

TABLE OF ARCS

NUMBER	RADIUS	ARC	DELTA	TAN	CHORD	CHORD BRNG
1-1	750.00	31.21	002°23'02"	15.60	31.20	S89°15'45.0"W
1-2	60.21	004°36'00"	30.12	60.20	S81°47'25.0"W	
1-3	60.82	004°38'46"	30.43	60.80	S77°10'02.0"W	
1-4	36.78	002°48'40"	18.40	36.79	S73°26'18.0"W	
2	1000.00	007°40'39"	67.10	1000.00	S70°55'18.5"W	
2-1	74.00	004°14'23"	37.02	73.98	S74°09'10.5"W	
2-2	60.00	003°26'16"	30.01	59.99	S77°59'30.0"W	
3	1185.32	702.01	033°55'00"	361.63	691.61	S87°22'30.0"E
3-1	128.62	004°12'50"	64.37	128.55	S73°51'25.0"E	
3-2	53.86	002°36'12"	26.95	53.88	S77°55'55.0"E	
3-3	53.83	002°36'12"	26.95	53.88	S80°32'08.0"E	
3-4	51.46	002°29'15"	25.75	51.48	S83°04'51.5"E	
3-5	60.56	002°55'33"	30.29	60.55	S88°47'15.5"E	
3-6	60.22	002°54'34"	30.12	60.21	S89°42'19.0"E	
3-7	60.04	002°54'03"	30.03	60.04	N89°23'22.5"E	
3-8	60.02	002°53'58"	30.01	60.01	N89°29'22.0"E	
3-9	60.14	002°54'21"	30.08	60.14	N89°35'12.5"E	
3-10	60.44	002°55'11"	30.22	60.43	N79°40'25.5"E	
3-11	62.72	002°32'51"	31.37	62.72	N76°56'25.5"E	
4	876.80	796.83	064°07'39"	423.98	717.94	S78°16'10.5"E
4-1	22.47	001°54'14"	11.24	22.47	N76°37'07.0"E	
4-2	131.69	01°10'13"	66.12	131.66	N83°08'20.5"E	
4-3	10.00	002°50'51"	5.00	10.00	N89°02'52.5"E	
4-4	79.85	002°45'56"	39.97	79.80	S87°01'44.0"E	
4-5	51.87	002°23'43"	25.95	51.86	S81°26'54.5"E	
4-6	66.48	002°37'57"	33.26	66.45	S78°26'04.5"E	
4-7	53.32	002°01'37"	29.88	53.31	S71°08'17.5"E	
4-8	110.00	002°19'14"	55.12	109.88	S63°55'52.0"E	
4-9	170.01	014°24'17"	85.45	169.56	S52°04'06.5"E	
4-10	95.00	004°39'37"	47.52	94.99	S48°32'08.5"E	
5	139.72	49.75	002°32'48"	25.14	49.48	S76°12'02.5"E
6	1285.79	139.66	008°37'37"	100.00	1285.43	N89°45'54.5"E
7	607.16	198.22	018°42'20"	100.00	607.34	S85°44'54.0"W
8	1134.04	199.48	010°04'43"	100.00	1134.26	S81°26'05.5"W
9	60.00	75.57	078°43'36"	45.12	69.77	N54°09'45.0"W
10	180.00	66.33	025°33'55"	34.03	66.38	S81°00'55.5"E
11	180.00	80.32	025°33'55"	40.84	75.65	S02°00'55.5"E
11-1	24.06	007°39'30"	12.03	24.04	S08°58'13.0"W	
11-2	56.66	01°54'29"	29.36	56.03	S08°04'44.5"E	
12	65.00	078°43'36"	69.79	107.55	S54°05'55.0"E	
12-1	21.80	014°45'33"	11.01	21.84	S22°10'43.5"E	
12-2	45.00	030°19'59"	23.04	44.48	S44°43'29.5"E	
12-3	35.00	023°30'32"	17.75	34.75	S71°41'15.0"E	
12-4	14.89	010°05'32"	7.47	14.88	S89°30'17.0"E	
13	1164.04	204.76	010°04'43"	102.65	204.50	N81°26'05.5"E
13-1	60.03	002°57'17"	30.02	60.02	N84°53'48.5"E	
13-2	60.19	002°57'45"	30.10	60.18	N89°02'17.5"E	
13-3	60.31	002°58'42"	30.26	60.30	N79°04'04.0"E	
13-4	1285.79	139.66	008°37'37"	100.00	1285.43	N89°45'54.5"E
14	577.16	188.43	018°42'20"	95.06	581.59	N89°44'54.0"E
14-1	36.68	003°38'28"	18.35	36.67	N78°12'58.0"E	
14-2	60.14	002°58'12"	30.10	60.11	N83°01'18.0"E	
14-3	60.06	002°57'53"	30.07	60.05	N89°09'25.5"E	
14-4	31.53	003°07'47"	15.77	31.52	S86°27'49.5"E	
15	1355.79	204.14	008°37'37"	102.26	203.95	S89°12'44.5"E
15-1	29.00	001°13'32"	14.50	29.00	S89°30'42.0"E	
15-2	60.35	002°33'02"	30.18	60.35	S87°23'59.0"E	
15-3	60.12	002°32'25"	30.06	60.11	S89°55'43.0"E	
15-4	54.67	002°18'37"	27.34	54.66	N87°37'46.5"E	
16	168.72	60.50	020°32'49"	30.68	60.16	N76°12'02.5"E
16-1	31.96	010°51'17"	16.09	31.96	N81°02'46.5"E	
16-2	29.76	04°15'23"	14.90	29.51	N70°46'29.0"E	
17	50.00	163.69	187°34'44"	99.78	N27°51'44.0"W	
17-1	28.50	038°39'42"	14.65	28.12	N49°35'47.0"E	
17-2	30.00	034°22'39"	15.47	29.55	N18°04'36.5"E	
17-3	36.95	04°15'23"	19.13	36.76	S89°11'15.5"E	
17-4	35.22	040°21'56"	18.36	34.50	N63°10'14.0"W	
17-5	33.42	038°17'54"	17.36	32.60	S77°29'51.0"W	
18	50.00	249.81	266°15'36"	60.00	S96°29'17.0"E	
18-1	35.81	041°01'47"	18.71	35.05	N29°02'21.5"E	
18-2	36.05	044°48'16"	20.61	36.11	N13°48'40.0"W	
18-3	30.00	057°17'45"	27.32	47.94	N64°52'40.5"W	
18-4	41.80	047°53'28"	22.20	40.59	S62°31'43.0"W	
18-5	47.30	054°12'33"	25.59	45.55	S11°28'45.0"W	
18-6	35.81	041°01'47"	18.71	35.05	S36°08'27.5"E	
19	1295.79	195.11	008°37'37"	97.74	194.92	N89°12'44.5"E
19-1	30.52	001°20'58"	15.26	30.52	S87°08'56.0"W	
19-2	60.07	002°39'22"	30.04	60.06	S89°09'06.0"W	
19-3	60.26	002°39'53"	30.14	60.25	N89°11'15.5"E	
19-4	44.26	001°57'24"	22.13	44.25	N85°52'38.0"W	
20	637.16	208.02	018°42'20"	104.94	637.09	S89°44'54.0"W
20-1	16.30	001°27'57"	8.15	16.30	N89°37'54.5"W	
20-2	60.21	002°39'22"	30.13	60.18	N89°04'18.0"W	
20-3	60.03	002°38'54"	30.04	60.01	S89°31'20.0"W	
20-4	60.38	002°55'51"	30.22	60.37	S80°06'27.5"W	
20-5	11.09	000°59'48"	5.54	11.08	S78°53'38.0"W	
21	1104.04	194.21	010°04'43"	97.95	193.95	S81°26'05.5"E
21-1	48.66	002°34'37"	24.83	48.65	S77°41'02.5"W	
21-2	60.33	003°07'52"	30.17	60.33	S80°32'17.0"W	
21-3	60.08	003°07'04"	30.05	60.07	S83°39'46.0"W	
21-4	24.14	001°15'10"	12.07	24.14	S89°40'52.0"W	
22	120.00	53.84	005°23'55"	27.23	53.10	N05°00'55.5"W
6-1	1325.79	169.10	007°18'28"	84.66	168.98	N88°33'10.0"W
6-2	1325.79	30.52	001°19'09"	15.26	30.52	S87°08'01.5"W
15-5	1355.79	173.61	007°20'13"	86.93	173.50	N88°34'02.5"W
15-6	1355.79	30.53	001°17'24"	15.26	30.52	S87°07'09.0"W



NOTES

Bearings shown herein are based on bearings shown on the Plat of BOCA DEL MAR NO. 5 as recorded in Plat Book 30, Pages 127-128 of the Public Records of Palm Beach County, Florida.

No buildings, trees, or shrubs shall be placed on easements.

PRM Indicates Permanent Reference Monument (existing)
PCP Indicates Permanent Control Point
U.E. Indicates Utility Easement
D.E. Indicates Drainage Easement



21/47/42

This instrument was prepared by:
John A. Grant, Jr., John A. Grant, Jr., Inc.
3333 North Federal Highway, Boca Raton, Florida

SILVER WOODS

0205. 414

35/178