

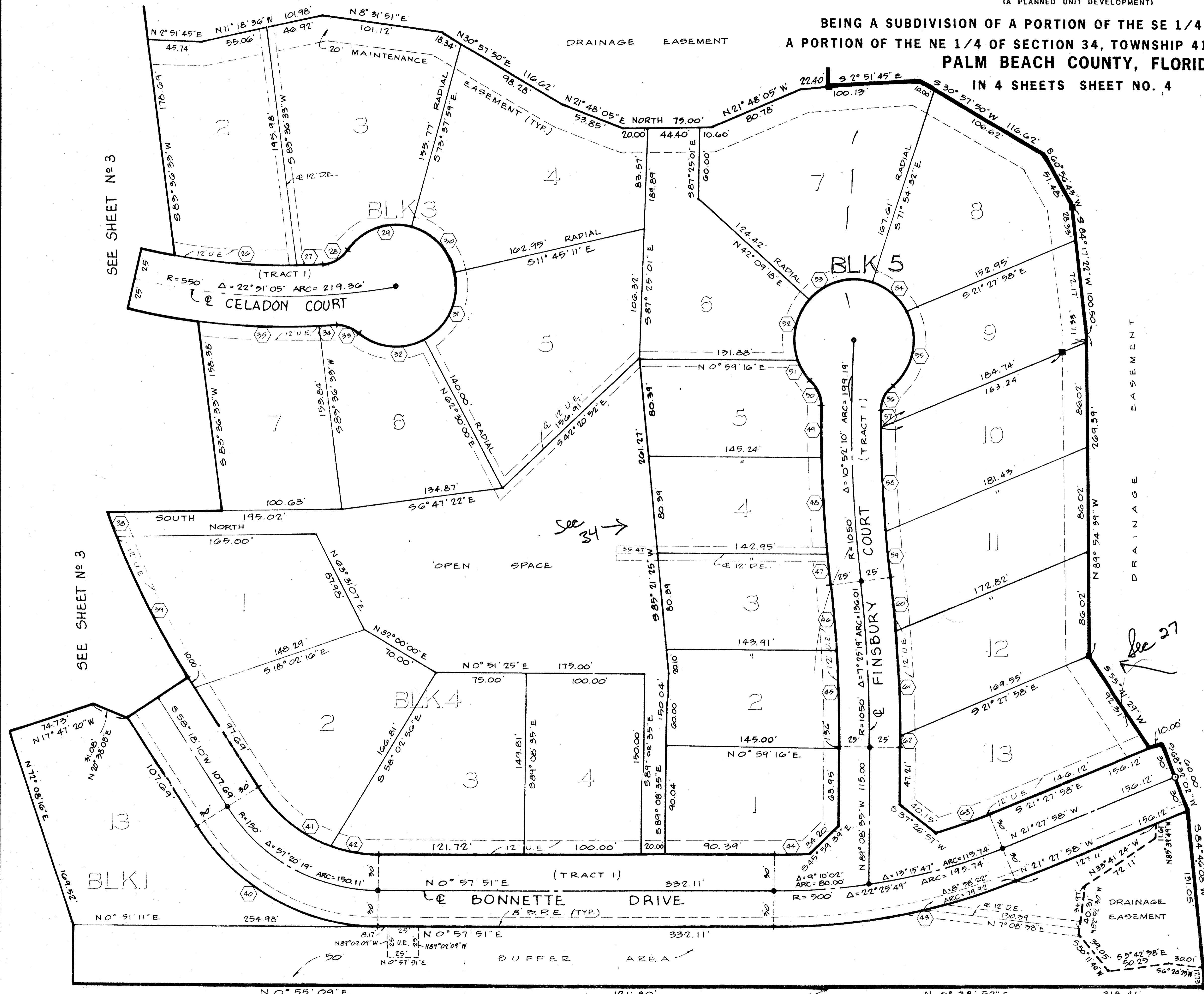
# PLAT NO. 6 EASTPOINTE COUNTRY CLUB

(A PLANNED UNIT DEVELOPMENT)

BEING A SUBDIVISION OF A PORTION OF THE SE 1/4 OF SECTION 27 AND  
A PORTION OF THE NE 1/4 OF SECTION 34, TOWNSHIP 41 SOUTH, RANGE 42 EAST  
PALM BEACH COUNTY, FLORIDA  
IN 4 SHEETS SHEET NO. 4

158

STATE OF FLORIDA  
COUNTY OF PALM BEACH  
This Plat was filed for record at  
this day of \_\_\_\_\_, 1978,  
and duly recorded in Plat Book No  
on page \_\_\_\_\_  
JOHN B. DUNKLE, Clerk Circuit Court  
By \_\_\_\_\_ D.C.



NO.	ANGLE	CENTRAL ANGLE	ARC	TANGENT
26.	725'	11° 08' 44"	192.13'	51.22'
27.	525'	2° 26' 02"	22.30'	11.15'
28.	25'	51° 19' 04"	22.39'	12.01'
29.	56'	70° 48' 59"	61.80'	35.54'
30.	50'	61° 52' 47"	54.00'	29.97'
31.	50'	74° 15' 11"	64.80'	37.85'
32.	50'	69° 17' 49"	60.47'	34.56'
33.	25'	45° 27' 41"	19.84'	10.47'
34.	575'	1° 10' 35"	11.75'	5.88'
35.	575'	10° 06' 01"	101.36'	50.81'
38.	720'	1° 41' 57"	21.35'	10.68'
39.	720'	10° 20' 42"	130.00'	65.18'
40.	180'	57° 20' 19"	180.13'	98.42'
41.	120'	36° 09' 02"	79.90'	41.50'
42.	120'	19° 11' 17"	40.19'	20.28'
43.	530'	22° 25' 49"	207.49'	105.09'
44.	470'	3° 48' 34"	31.25'	15.63'
45.	1025'	4° 24' 02"	78.72'	39.38'
46.	1025'	3° 01' 17"	54.05'	27.03'
47.	1075'	1° 24' 34"	26.44'	13.22'
48.	1075'	4° 16' 31"	80.21'	40.13'
49.	1075'	2° 12' 15"	41.35'	20.68'
50.	25'	46° 43' 00"	20.38'	10.80'
51.	50'	37° 58' 09"	24.41'	12.45'
52.	50'	59° 34' 43"	51.99'	28.62'
53.	50'	65° 56' 10"	57.54'	32.43'
54.	50'	44° 43' 57"	39.04'	20.57'
55.	50'	78° 07' 36"	68.16'	40.58'
56.	25'	49° 46' 19"	21.72'	11.11'
57.	1025'	0° 47' 40"	14.21'	7.11'
58.	1025'	4° 44' 41"	84.88'	42.46'
59.	1025'	2° 12' 15"	39.43'	19.72'
60.	1075'	2° 20' 07"	43.81'	21.91'
61.	1075'	4° 31' 28"	84.89'	42.47'
62.	1075'	0° 33' 44"	10.55'	5.27'
63.	470'	5° 30' 27"	45.16'	22.61'

SEE SHEET No 3

SEE SHEET No 3

See 34

See 27

27 34/41/42

27

0238-322

EASTPOINTE - #6

35/158