

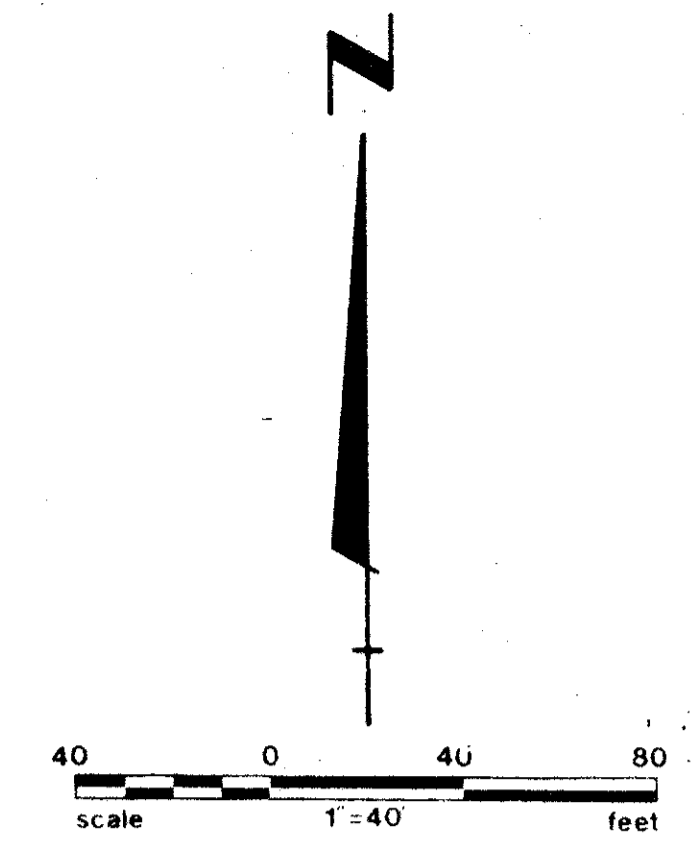
PLAT NO. 3
EASTPOINTE COUNTRY CLUB
P.B. 34 PGS. 16-18

PLAT NO. 5
EASTPOINTE COUNTRY CLUB
PB 34 PGS 128-130

TRACT 11

154

STATE OF FLORIDA
COUNTY OF PALM BEACH
This Plat was filed for record at
this day of _____, 1978,
and duly recorded in Plat Book No.
on page _____
JOHN B. DUNKLE, Clerk Circuit Court
By _____ D.C.



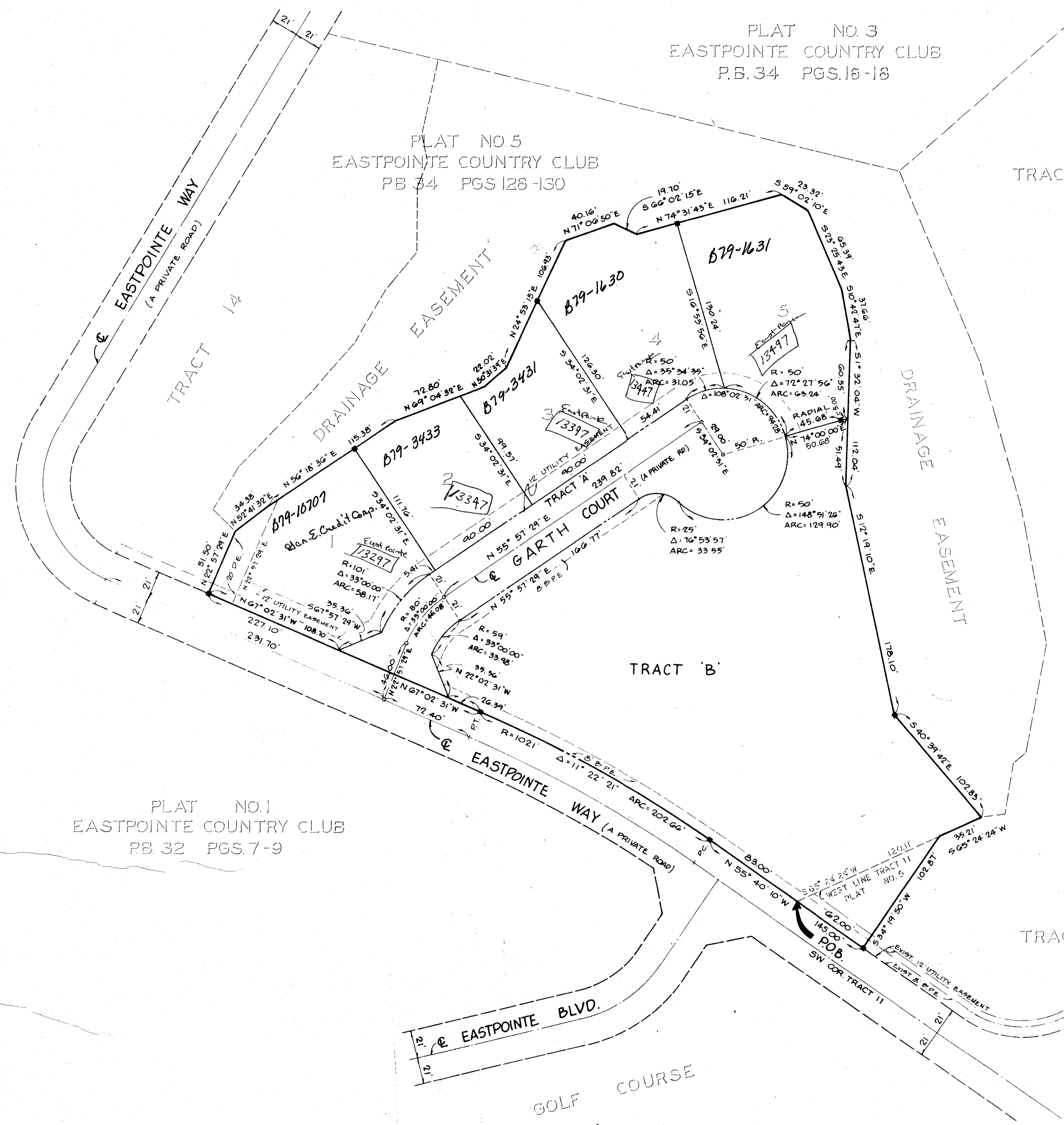
PLAT NO. 5A EASTPOINTE COUNTRY CLUB

(A PLANNED UNIT DEVELOPMENT)

IN SECTION 27, TOWNSHIP 41 SOUTH, RANGE 42 EAST
BEING A REPLAT OF A PORTION OF TRACT 11,
EASTPOINTE COUNTRY CLUB PLAT NO. 5,
PLAT BOOK 34, PAGES 128-130, AND OTHER LANDS
PALM BEACH COUNTY, FLORIDA

IN 2 SHEETS SHEET NO. 2

27



PLAT NO. 1
EASTPOINTE COUNTRY CLUB
PB. 32 PGS. 7-9

PLAT NO. 5
EASTPOINTE COUNTRY CLUB
PB 34 PGS 128-130

27/41/42

- NOTES:
- THERE SHALL BE NO BUILDINGS OR STRUCTURES PLACED ON UTILITY EASEMENTS.
 - THERE SHALL NOT BE ANY TYPE OF CONSTRUCTION OR THE PLANTING OF TREES OR SHRUBS ON DRAINAGE EASEMENTS.
 - BLARING REFERENCE: PLAT BOOK 34, PAGES 128, 129 AND 130.
 - IMPROVMENTS WITHIN THIS PLAT ARE SUBJECT TO THE DECLARATION OF RESTRICTIVE COVENANTS AS FILED IN O.R.B. 2543, PAGE 1.33, OFFICIAL RECORDS OF PALM BEACH COUNTY.
 - BUILDING SETBACKS SHALL BE AS REQUIRED BY PALM BEACH COUNTY ZONING REGULATIONS.
- | | | |
|--------------------------------------|---|---------------------|
| AREA OF LOTS | = | 1.506 ACRES |
| AREA OF TRACT "A" | = | 0.461 ACRES |
| AREA OF TRACT "B" | = | 1.647 ACRES |
| TOTAL AREA | = | 3.814 ACRES |
| TOTAL DWELLING UNITS (SINGLE FAMILY) | = | 5 |
| DENSITY | = | 1.31 UNITS PER ACRE |
- = PERMANENT REFERENCE MONUMENT (P.R.M.) NO. 1552
 - = PERMANENT CONTROL POINT (P.C.P.)
 - B.P.E. = BICYCLE-PEDESTRIAN PATH EASEMENT
 - D.E. = DRAINAGE EASEMENT

EASTPOINTE - 5-A

0238-321
35/154