

# HOLIDAY CITY AT BOCA RATON SECTION 7

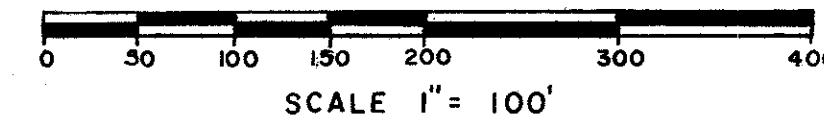
A PLAT OF A PORTION OF SECTION 26, TOWNSHIP 47 SOUTH, RANGE 41 EAST  
AND A REPLAT OF A PORTION OF BLK.12, FLORIDA FRUIT LAND CO. SUBDIVISION NO.2 AS RECORDED IN  
PLAT BOOK NO.1, PAGE 102, PUBLIC RECORD OF PALM BEACH COUNTY, FLORIDA

PALM BEACH COUNTY, FLORIDA

JOHN A. GRANT, JR., INC.

CONSULTING ENGINEERS AND LAND SURVEYORS

BOCA RATON, FLORIDA



JULY 1978  
SHEET 2 OF 2

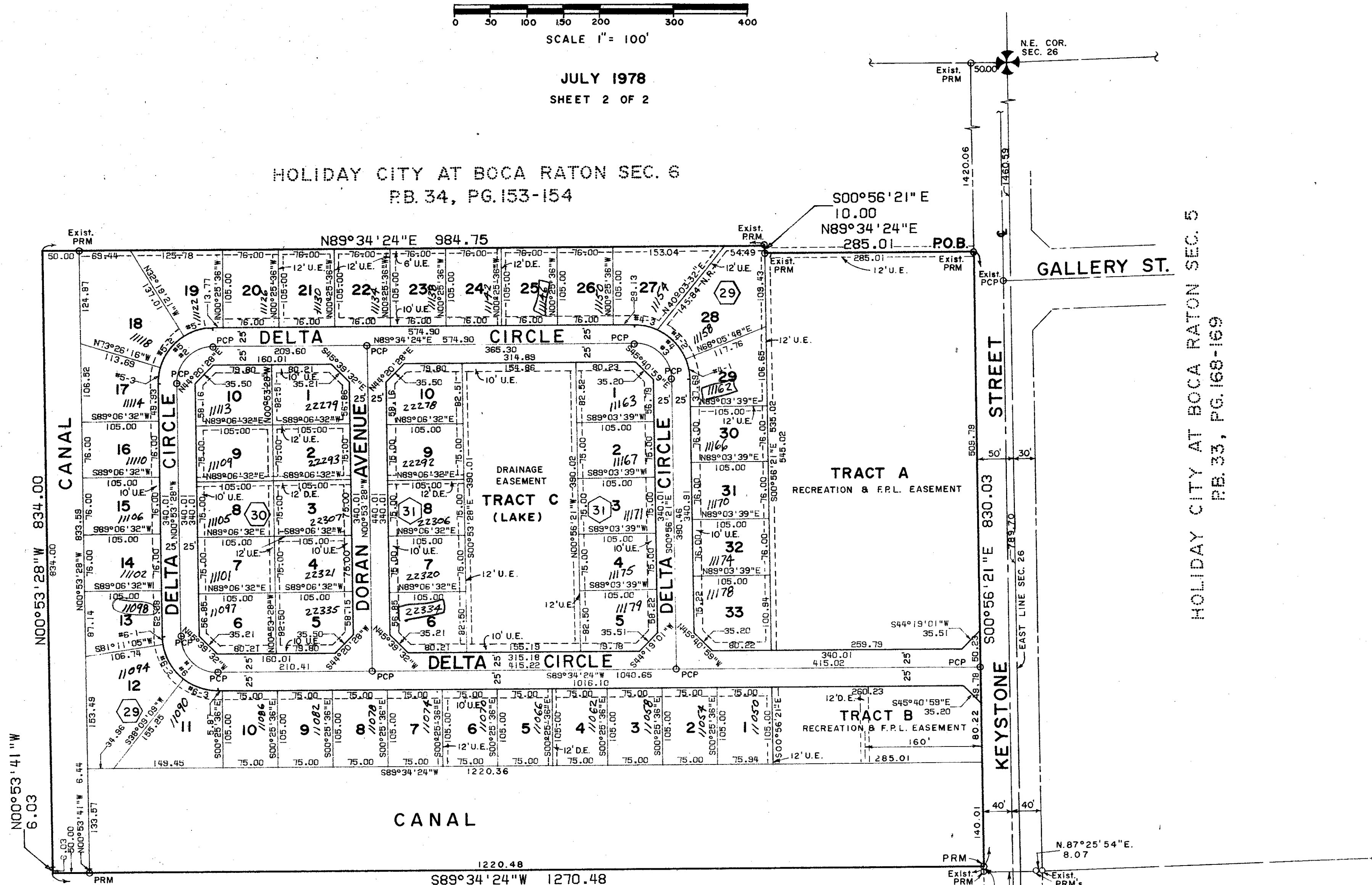
**TABLE OF ARCS**

NUMBER	RADIUS	ARC	DELTA	TAN	CHORD	CHORD BRNG
1	50.00	78.13	089°32'08"	49.60	70.42	N45°39'32.0"W
2	50.00	78.95	030°27'52"	50.41	71.00	N44°20'28.0"E
3	50.00	78.09	089°29'15"	49.55	70.39	S45°40'58.5"E
4	75.00	117.14	089°29'15"	75.23	105.99	N85°40'58.5"W
4-1	27.44	020°57'50"	13.98	27.29	11°25'17.0"W	
4-2	59.69	045°35'48"	31.52	58.12	N44°42'06.0"W	
4-3	29.57	022°35'36"	14.98	29.38	N79°07'48.0"W	
5	75.00	118.42	030°27'52"	75.61	106.50	S44°20'28.0"E
5-1	41.35	031°53'45"	21.43	41.21	S73°37'31.5"W	
5-2	53.82	041°06'55"	28.13	52.67	S73°07'11.5"W	
5-3	22.85	017°27'12"	11.51	22.76	S07°50'08.0"W	
6	75.00	117.60	089°32'08"	74.39	105.64	S45°39'32.0"E
6-1	10.37	007°55'27"	5.19	10.36	S04°51'11.5"E	
6-2	56.33	043°01'56"	29.57	55.01	S30°19'53.0"E	
6-3	50.50	038°34'45"	26.25	49.55	S71°08'13.5"E	

**TABLE OF AREAS**

BLK. 29	SQ. FT.
L-1	7,324
L-2	7,875
L-3	7,875
L-4	7,875
L-5	7,875
L-6	7,875
L-7	7,875
L-8	7,875
L-9	7,875
L-10	7,875
L-11	11,645
L-12	14,895
L-13	8,384
L-14	7,379
L-15	7,379
L-16	7,379
L-17	9,479
L-18	15,470
L-19	9,382
L-20	7,380
L-21	7,380
L-22	7,380
L-23	7,380
L-24	7,380
L-25	7,380
L-26	7,380
L-27	11,445
L-28	14,155
L-29	9,135
L-30	7,380
L-31	7,380
L-32	7,380
L-33	10,242
BLK. 30	SQ. FT.
L-1	8,312
L-2	7,875
L-3	7,875
L-4	7,875
L-5	8,380
L-6	8,310
L-7	7,874
L-8	7,874
L-9	7,874
L-10	8,391
BLK. 31	SQ. FT.
L-1	8,308
L-2	7,875
L-3	7,875
L-4	7,875
L-5	8,389
L-6	8,310
L-7	7,874
L-8	7,874
L-9	7,874
L-10	8,391
TRACT A	152,162
TRACT B	29,620
CANAL - 1	169,858
CANAL - 2	42,001
LAKE	60,161
STREET	150,342
TOTAL	1,064,057

ORIOLE COUNTRY  
P.B. 32, PG. 175-180



HOLIDAY CITY AT BOCA RATON SEC. 5  
P.B. 33, PG. 168-169

69

26/47/41

**NOTES**

- P. R. M. Indicates Permanent Reference Monuments.
- P. C. P. Indicates Permanent Control Points.
- U. E. Utility Easement - 6' rear and side lot line, 10' front.
- D. E. Drainage Easement - 6' each side of lot line.

Bearings shown herein are based on a bearing of S.0°56'21"E. along the East line of Section 25, Township 47 South, Range 41 East, as recorded in Holiday City at Boca Raton Section 6, in Plat Book 34, Pages 153 & 154 of the Public Records of Palm Beach County, Florida.

There will be no buildings, trees, nor shrubs placed on easements.

This instrument was prepared by:  
John A. Grant, Jr., John A. Grant, Jr., Inc.  
3333 North Federal Hwy., Boca Raton, Fla.

FLORIDA FRUIT LANDS CO. SUB. NO. 2  
P.B. 1, PG. 102

HOLIDAY CITY - SEC. 7

0478-307  
35/138