

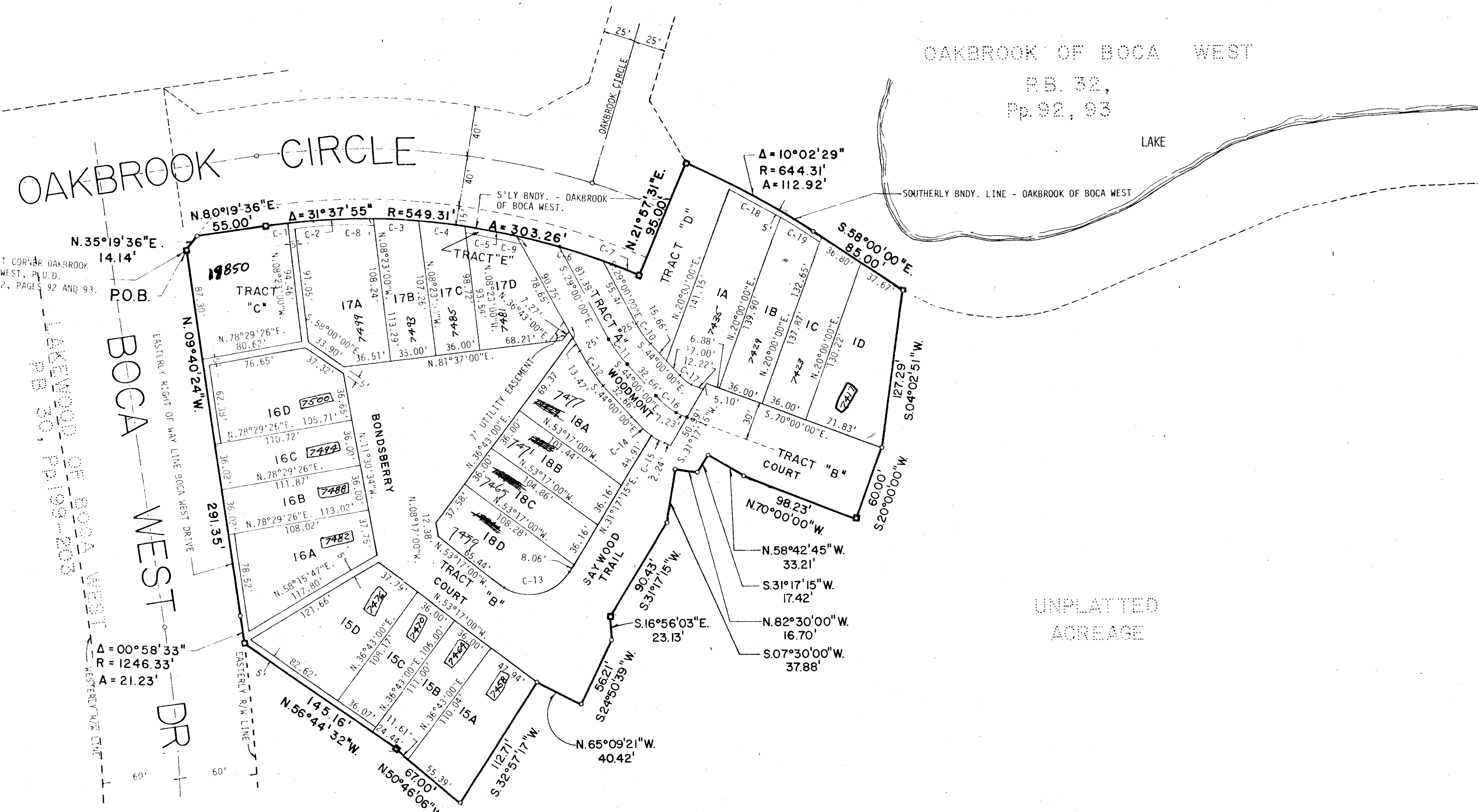
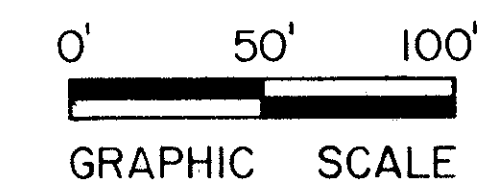
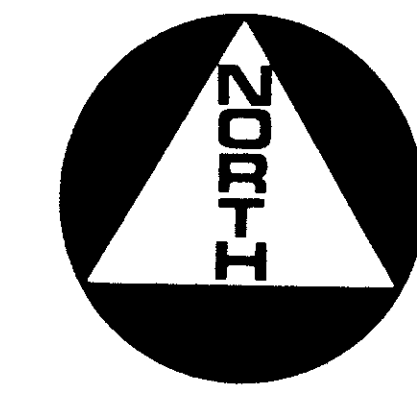
A PLANNED UNIT DEVELOPMENT
PLAT NO. 1, HAMLET "C" AT BOCA WEST

LYING IN PART OF SECTION 9 TOWNSHIP 47 SOUTH
 RANGE 42 EAST, PALM BEACH COUNTY, FLORIDA.

(SHEET 2 OF 2)

128

STATE OF FLORIDA
 COUNTY OF PALM BEACH
 THIS PLAT WAS FILED FOR
 RECORD AT _____ M.
 THIS _____ DAY OF _____
 A.D., 1978 AND DULY RE-
 CORDED IN PLAT BOOK _____
 ON PAGES _____ AND _____.
 JOHN B. DUNKLE, CLERK
 CIRCUIT COURT
 BY: _____ DC



CURVE DATA				
C. NO.	CENT. ANG.	RADIUS	ARC	TANGENT
C-1	01°50'50"	549.31'	17.71'	8.86'
C-2	07°02'44"	549.31'	67.55'	33.82'
C-3	03°48'29"	549.31'	36.51'	18.26'
C-4	03°51'35"	549.31'	37.01'	18.51'
C-5	04°44'43"	549.31'	45.49'	22.76'
C-6	07°17'21"	549.31'	69.88'	34.99'
C-7	03°02'13"	549.31'	29.12'	14.56'
C-8	06°35'04"	544.31'	62.55'	31.31'
C-9	05°03'17"	544.31'	48.02'	24.03'
C-10	15°00'00"	75.00'	19.63'	9.87'
C-11	15°00'00"	100.00'	26.18'	13.17'
C-12	15°00'00"	125.00'	32.72'	16.46'
C-13	95°25'45"	35.00'	58.29'	38.48'
C-14	16°08'36"	75.00'	21.13'	10.64'
C-15	09°51'24"	75.00'	12.90'	6.47'
C-16	26°00'00"	50.00'	22.69'	11.54'
C-17	26°00'00"	25.00'	11.34'	5.77'
C-18	04°11'27"	639.31'	46.76'	23.39'
C-19	03°17'30"	639.31'	36.73'	18.37'

53

9/17/42 0214-333

UNPLATTED ACREAGE

UNPLATTED ACREAGE

- NOTES
- INDICATES A 4"x4" PERMANENT REFERENCE MON. FLA. CERT. #2424
 - INDICATES A PERMANENT CONTROL POINT, FLA. CERT #2424
 - THIS INSTRUMENT WAS PREPARED BY ROBERT J. WHIDDEN IN THE OFFICES OF BENCH MARK LAND SURVEYING AND MAPPING, INC., 2300 PALM BEACH LAKES BLVD., WEST PALM BEACH, FLORIDA 33409, PHONE NO. 689-2111

BENCH MARK
 land surveying and mapping, inc.

CONRAD W. SCHAEFER CONSULTING ENGINEERS, INC.
 PALM BEACH COUNTY, FLORIDA

PLAT NO. 1, HAMLET "C" AT BOCA WEST

35/128

DESIGNED	DRAWN	CHECKED	DATE
CWS	TAL	RJW	4/8
DATE	SCALE	APPROVED	
CWS	1" = 50'		2

HAMLET "C"